

Converting Colors

CIELCh(67, 14.934, 65.380)

Have a look what the booklet for
CIELCh(67, 14.934, 65.380) contains.

CIELCh(67, 14.992, 63.937)	3
<i>Conversions</i>	4
<i>Details</i>	6
<i>Harmonies</i>	11
<i>Previews</i>	20
<i>Color Blindness Simulation</i>	23
<i>CSS Examples</i>	26

Color

CIELCh(67, 14.992, 63.937)

Conversions

Conversions Part 1

Format	Color
Hex	B89E8B
RGB	184, 158, 139
RGB Percent	72%, 62%, 55%
CMY	0.2774, 0.3794, 0.4539
CMYK	0.00, 0.14, 0.24, 0.28
HSL	25°, 24%, 63%
HSV	25°, 24%, 72%
XYZ	36.7763, 36.6320, 29.6515
YIQ	163.6080, 21.5950, -0.3970

Conversions

Conversions Part 2

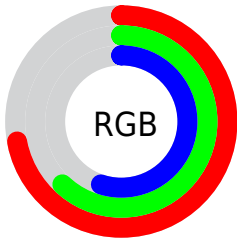
Format	Color
RYB	184, 172, 139
Decimal	12099211
CIELab	67.00, 6.59, 13.47
CIElCh	67, 14.992, 63.937
Yxy	36.6320, 0.3568, 0.3554
Android (android.graphics.Color)	4290289291 (0xFFB89E8B)
YUV	163.6080, -12.1317, 17.8838
Hunter-Lab	60.5244, 2.5441, 13.3203

Details

The CIELCh color $67, 14.992, 63.937$ is a light color, and the websafe version is hex `CC9999`. A complement of this color would be $67, 13.598, 249.870$, and the grayscale version is $67, 0.008, 296.813$.

A 20% lighter version of the original color is $87, 14.710, 64.785$, and $47, 14.891, 65.139$ is the 20% darker color. If you saturate the color by 10%, you get $64, 21.781, 62.915$, and if you desaturate by 10%, it is $70, 8.595, 64.985$.

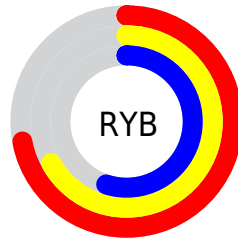
Distribution



Red (72%)

Green (62%)

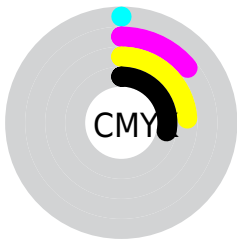
Blue (55%)



Red (72%)

Yellow (67%)

Blue (55%)

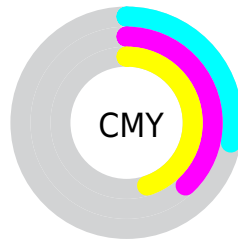


Cyan (0%)

Magenta (14%)

Yellow (24%)

Black (28%)



Cyan (28%)

Magenta (38%)

Yellow (45%)

Brightness & Saturation Gradients

These gradients show how the CIELCh color 67, 14.992, 63.937 changes by changing the brightness by 10 percent. The first figure shows a shift by +10% for each color and the second figure -10%.

Similar to the brightness gradients but the following saturation gradients show a change of the CIELCh color 67, 14.992, 63.937 by changing the saturation by 10% instead.

■ 67, 14.992, 63.937

■ 67, 14.992, 63.937

■ 100, 14.992,
63.937

■ 57, 14.992, 63.937

■ 87, 14.992, 63.937

■ 47, 14.992, 63.937

■ 97, 14.992, 63.937

■ 37, 14.992, 63.937

■ 27, 14.992, 63.937

■ 17, 14.992, 63.937

■ 7, 14.992, 63.937

■ 0, 14.992, 63.937

■ 67, 14.992, 63.937

■ 67, 14.992, 63.937

■ 64, 21.781, 62.915

■ 70, 8.595, 64.985

61, 28.974, 61.907

73, 2.560, 65.940

58, 36.552, 60.924

77, 3.145, 247.288

55, 44.428, 59.945

80, 8.558, 248.256

52, 52.381, 58.899

83, 13.711,
249.267

50, 59.929, 57.616

87, 18.636,
250.261

48, 66.193, 55.755

90, 19.038,
236.230

47, 69.285, 54.663

92, 19.731,
216.071

95, 22.456,
199.278

Harmonies

Complementary

The Complementary color scheme is a pair of colors which are on the opposite of each other on the color wheel.



67, 14.992, 63.937



67, 13.598, 249.870

Rectangle

The Rectangle color scheme consists of four colors that form a rectangle on the color wheel.



67, 14.992, 63.937



67, 14.992, 113.937



67, 14.992, 243.937



67, 14.992, 293.937

Sweetspot

The Sweet Spot groups the original color and five complimentary colors.



67, 14.992, 63.946



92, 5.052, 65.714



63, 22.543, 341.389



49, 3.286, 65.658



97, 0.011, 296.813



50, 0.007, 296.813

Same Dimension

The Same Dimension uses a secret algorithm to generate beautiful new colors.



67, 14.992, 63.946



83, 22.377, 63.423



73, 22.239, 104.076



37, 3.314, 65.501



39, 60.900, 55.189



5, 8.713, 52.942

Inverse Universe

The Inverse Universe completely reimagines the original color for something new.



67, 13.598, 249.870



82, 19.837, 250.751



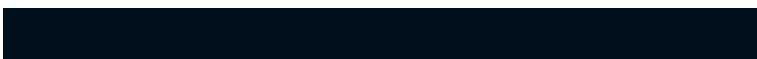
60, 23.300, 289.594



37, 3.206, 247.721



37, 42.139, 274.599



4, 9.506, 260.224

Previews

White Background



This preview shows how the CIELCh color 67, 14.992, 63.937 looks on a white background.

Color Contrast Check

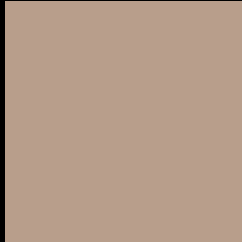
Large Text (above 18pt) WCAG AA × Fail

Any Text WCAG AA × Fail

Large Text (above 18pt) WCAG AAA × Fail

Any Text WCAG AAA × Fail

Black Background



This preview shows how the CIELCh color 67, 14.992, 63.937 looks on a black background.

Color Contrast Check

Large Text (above 18pt) WCAG AA ✓ Pass

Any Text WCAG AA ✓ Pass

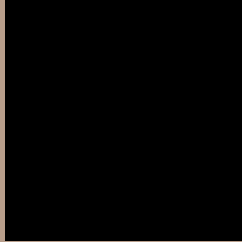
Large Text (above 18pt) WCAG AAA ✓ Pass

Any Text WCAG AAA ✓ Pass

If you want to check with other color combinations, try the [Color Contrast Checker](#).

CIELCh 67, 14.992, 63.937

Background



This preview shows how black text looks on a background with the CIELCh color 67, 14.992, 63.937.



This preview shows how white text looks on a background with the CIELCh color 67, 14.992, 63.937.

Color Blindness Simulation

Color vision deficiency is a very complex topic, and I could not describe the different causes any better than Wikipedia does, so if you want to learn more, you should check out their [article about color blindness](#).

Dichromacy



Original Color

67, 14.992, 63.937

Protanopia

67, 12.504, 93.995

Deuteranopia

67, 15.889, 58.484



Tritanopia
67, 14.328, 353.386

Trichromacy



Original Color
67, 14.992, 63.937

Protanomaly
67, 13.070, 81.256

Deuteranomaly
67, 15.562, 59.425

Tritanomaly
67, 11.830, 20.468

Monochromacy



Original Color
67, 14.992, 63.937

Achromatopsia
67, 0.008, 296.813

Achromatomaly
67, 5.197, 67.268

CSS Examples

Text

The CSS property to change the color of the text to CIELCh 67, 14.992, 63.937 is called "color". The color property can be set on classes, ids or directly on the HTML element.

This example shows how text in the color `rgb(184, 158, 139)` looks like.

```
.text, #text, p{  
    color:rgb(184, 158, 139)  
}
```

If you want to add a text shadow in that color use the text-shadow property, you can generate a text shadow directly with our [CSS Text Shadow Generator](#).

Here you see how black text with a 4 pixel rgb(184, 158, 139) colored shadow looks like.

```
.shadow{ text-shadow: 4px 4px 2px rgb(184, 158, 139) }
```

Border

The CSS property to change the border of an element to CIELCh 67, 14.992, 63.937 is called "border". The border property can be set on classes, ids or directly on the HTML element.

This example shows the color as border, it can be applied via the CSS property "border" or "border-color".

```
.border, #border, table{ border:4px solid rgb(184, 158, 139) }
```

If only the border color should be changed use the property `border-color`.

```
.border{ border-color:rgb(184, 158, 139) }
```

If you want to add a box shadow in that color use:

Here you see how a box with a 4 pixel `rgb(184, 158, 139)` colored shadow looks like.

```
.boxshadow{ -moz-box-shadow:4px 4px 4px  
4px rgb(184, 158, 139); -webkit-box-  
shadow:4px 4px 4px 4px rgb(184, 158, 139);  
box-shadow:4px 4px 4px 4px rgb(184, 158,  
139) }
```

Background

The CSS property to change the background color of an element to CIELCh 67, 14.992, 63.937 is called "background". The background property can be set on classes, ids or directly on the HTML element.

```
.background, #background, body{  
background: rgb(184, 158, 139) }
```

If only the background color should be changed can be used:

```
.background{ background-color: rgb(184,  
158, 139) }
```

This example shows the color as background, it is applied via the CSS property "background".

To optimize and compress your CSS code, you can use our [online CSS compressor and optimizer](#) based on csstidy. If you want to create a linear or radial gradient as background or border, check our [CSS Gradient Generator](#).

Hey! You found this booklet interesting? Support Converting Colors with the new Membership Option!

The pro membership hides all ads, plus gives you double the colors in the color bucket, and more awesome pro features!

[Learn more, Memberships starting at \\$2.50/m!](#)

**Follow me
on Twitter!**

@ConvertingColor