

Converting Colors

CIELCh(67, 16.309, 17.107)

Have a look what the booklet for
CIELCh(67, 16.309, 17.107) contains.

CIELCh(67, 16.309, 17.107)	3
<i>Conversions</i>	4
<i>Details</i>	6
<i>Harmonies</i>	11
<i>Previews</i>	20
<i>Color Blindness Simulation</i>	23
<i>CSS Examples</i>	26

Color

CIELCh(67, 16.309, 17.107)

Conversions

Conversions Part 1

Format	Color
Hex	C2999B
RGB	194, 153, 155
RGB Percent	76%, 60%, 61%
CMY	0.2391, 0.3999, 0.3920
CMYK	0.00, 0.21, 0.20, 0.24
HSL	357°, 25%, 68%
HSV	357°, 21%, 76%
XYZ	39.5697, 36.6320, 36.0075
YIQ	165.4870, 23.7940, 9.3140

Conversions

Conversions Part 2

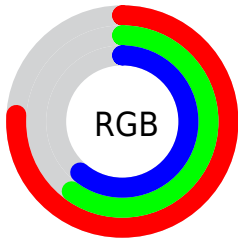
Format	Color
RYB	194, 153, 155
Decimal	12753307
CIELab	67.00, 15.59, 4.80
CIElCh	67, 16.309, 17.107
Yxy	36.6320, 0.3526, 0.3265
Android (android.graphics.Color)	4290943387 (0xFFC2999B)
YUV	165.4870, -5.1701, 25.0059
Hunter-Lab	60.5244, 10.7825, 7.0938

Details

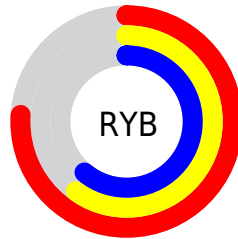
The CIELCh color $67, 16.309, 17.107$ is a light color, and the websafe version is hex `CC9999`. A complement of this color would be $76, 14.379, 194.012$, and the grayscale version is $68, 0.008, 296.813$.

A 20% lighter version of the original color is $87, 16.480, 17.025$, and $47, 16.348, 17.415$ is the 20% darker color. If you saturate the color by 10%, you get $62, 24.857, 18.317$, and if you desaturate by 10%, it is $72, 8.288, 16.136$.

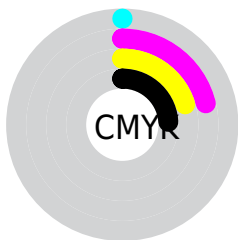
Distribution



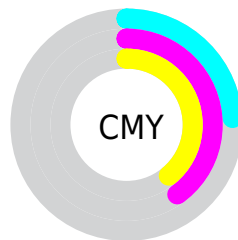
- Red (76%)
- Green (60%)
- Blue (61%)



- Red (76%)
- Yellow (60%)
- Blue (61%)



- Cyan (0%)
- Magenta (21%)
- Yellow (20%)
- Black (24%)



- Cyan (24%)
- Magenta (40%)
- Yellow (39%)

Brightness & Saturation Gradients

These gradients show how the CIELCh color 67, 16.309, 17.107 changes by changing the brightness by 10 percent. The first figure shows a shift by +10% for each color and the second figure -10%.

Similar to the brightness gradients but the following saturation gradients show a change of the CIELCh color 67, 16.309, 17.107 by changing the saturation by 10% instead.

■ 67, 16.309, 17.107

■ 67, 16.309, 17.107

■ 100, 16.309,
17.107

■ 57, 16.309, 17.107

■ 87, 16.309, 17.107

■ 47, 16.309, 17.107

■ 97, 16.309, 17.107

■ 37, 16.309, 17.107

■ 27, 16.309, 17.107

■ 17, 16.309, 17.107

■ 7, 16.309, 17.107

■ 0, 16.309, 17.107

■ 67, 16.309, 17.107

■ 67, 16.309, 17.107

■ 62, 24.857, 18.317

■ 72, 8.288, 16.136

57, 33.869, 19.845

78, 0.812, 14.785

52, 43.196, 21.805

83, 6.140, 194.908

48, 52.609, 24.316

89, 12.610,
194.350

45, 61.804, 27.475

95, 18.643,
193.906

43, 70.431, 31.252

41, 77.982, 35.290

96, 19.905,
198.193

40, 83.092, 38.183

Harmonies

Complementary

The Complementary color scheme is a pair of colors which are on the opposite of each other on the color wheel.



67, 16.309, 17.107



76, 14.379, 194.012

Rectangle

The Rectangle color scheme consists of four colors that form a rectangle on the color wheel.



67, 16.309, 17.107



67, 16.309, 67.107



67, 16.309, 197.107



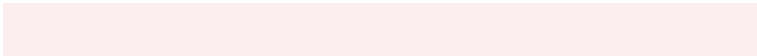
67, 16.309, 247.107

Sweetspot

The Sweet Spot groups the original color and five complimentary colors.



67, 16.307, 17.113



95, 5.434, 15.679



68, 26.681, 324.171



51, 3.642, 15.742



0, 0.000, 0.000



53, 0.007, 296.813

Same Dimension

The Same Dimension uses a secret algorithm to generate beautiful new colors.



67, 16.307, 17.113



82, 24.249, 17.594



72, 13.516, 67.390



38, 4.191, 15.978



33, 71.827, 37.730



3, 14.023, 16.744

Inverse Universe

The Inverse Universe completely reimagines the original color for something new.



67, 16.307, 17.113



82, 24.249, 17.594



71, 12.559, 252.723



38, 4.191, 15.978



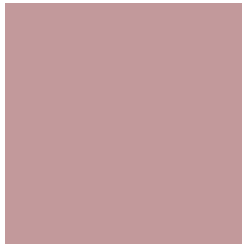
33, 71.827, 37.730



3, 14.023, 16.744

Previews

White Background



This preview shows how the CIELCh color 67, 16.309, 17.107 looks on a white background.

Color Contrast Check

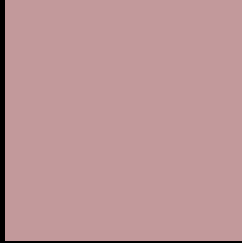
Large Text (above 18pt) WCAG AA × Fail

Any Text WCAG AA × Fail

Large Text (above 18pt) WCAG AAA × Fail

Any Text WCAG AAA × Fail

Black Background



This preview shows how the CIELCh color 67, 16.309, 17.107 looks on a black background.

Color Contrast Check

Large Text (above 18pt) WCAG AA ✓ Pass

Any Text WCAG AA ✓ Pass

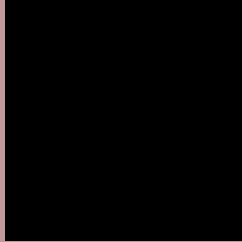
Large Text (above 18pt) WCAG AAA ✓ Pass

Any Text WCAG AAA ✓ Pass

If you want to check with other color combinations, try the [Color Contrast Checker](#).

CIELCh 67, 16.309, 17.107

Background



This preview shows how black text looks on a background with the CIELCh color 67, 16.309, 17.107.



This preview shows how white text looks on a background with the CIELCh color 67, 16.309, 17.107.

Color Blindness Simulation

Color vision deficiency is a very complex topic, and I could not describe the different causes any better than Wikipedia does, so if you want to learn more, you should check out their [article about color blindness](#).

Dichromacy



Original Color

67, 16.309, 17.107

Protanopia

67, 2.240, 66.700

Deuteranopia

67, 9.739, 33.190



Tritanopia
67, 17.784, 1.370

Trichromacy



Original Color
67, 16.309, 17.107

Protanomaly
67, 7.034, 24.447

Deuteranomaly
67, 11.942, 25.710

Tritanomaly
67, 17.411, 6.557

Monochromacy



Original Color
67, 16.309, 17.107

Achromatopsia
68, 0.008, 296.813

Achromatomaly
68, 5.816, 14.443

CSS Examples

Text

The CSS property to change the color of the text to CIELCh 67, 16.309, 17.107 is called "color". The color property can be set on classes, ids or directly on the HTML element.

This example shows how text in the color `rgb(194, 153, 155)` looks like.

```
.text, #text, p{  
    color:rgb(194, 153, 155)  
}
```

If you want to add a text shadow in that color use the text-shadow property, you can generate a text shadow directly with our [CSS Text Shadow Generator](#).

Here you see how black text with a 4 pixel rgb(194, 153, 155) colored shadow looks like.

```
.shadow{ text-shadow: 4px 4px 2px rgb(194, 153, 155) }
```

Border

The CSS property to change the border of an element to CIELCh 67, 16.309, 17.107 is called "border". The border property can be set on classes, ids or directly on the HTML element.

This example shows the color as border, it can be applied via the CSS property "border" or "border-color".

```
.border, #border, table{ border:4px solid rgb(194, 153, 155) }
```

If only the border color should be changed use the property `border-color`.

```
.border{ border-color:rgb(194, 153, 155) }
```

If you want to add a box shadow in that color use:

Here you see how a box with a 4 pixel `rgb(194, 153, 155)` colored shadow looks like.

```
.boxshadow{ -moz-box-shadow:4px 4px 4px  
4px rgb(194, 153, 155); -webkit-box-  
shadow:4px 4px 4px 4px rgb(194, 153, 155);  
box-shadow:4px 4px 4px 4px rgb(194, 153,  
155) }
```

Background

The CSS property to change the background color of an element to CIELCh 67, 16.309, 17.107 is called "background". The background property can be set on classes, ids or directly on the HTML element.

```
.background, #background, body{  
background: rgb(194, 153, 155) }
```

If only the background color should be changed can be used:

```
.background{ background-color: rgb(194,  
153, 155) }
```

This example shows the color as background, it is applied via the CSS property "background".

To optimize and compress your CSS code, you can use our [online CSS compressor and optimizer](#) based on csstidy. If you want to create a linear or radial gradient as background or border, check our [CSS Gradient Generator](#).

Hey! You found this booklet interesting? Support Converting Colors with the new Membership Option!

The pro membership hides all ads, plus gives you double the colors in the color bucket, and more awesome pro features!

[Learn more, Memberships starting at \\$2.50/m!](#)

**Follow me
on Twitter!**

@ConvertingColor