

Converting Colors

CIELCh(67, 16.387, 58.853)

Have a look what the booklet for
CIELCh(67, 16.387, 58.853) contains.

CIELCh(67, 16.593, 58.969)	3
<i>Conversions</i>	4
<i>Details</i>	6
<i>Harmonies</i>	11
<i>Previews</i>	20
<i>Color Blindness Simulation</i>	23
<i>CSS Examples</i>	26

Color

CIELCh(67, 16.593, 58.969)

Conversions

Conversions Part 1

Format	Color
Hex	BC9D8A
RGB	188, 157, 138
RGB Percent	74%, 62%, 54%
CMY	0.2628, 0.3844, 0.4589
CMYK	0.00, 0.16, 0.27, 0.26
HSL	23°, 27%, 64%
HSV	23°, 27%, 74%
XYZ	37.3752, 36.6320, 29.1392
YIQ	164.1030, 24.5750, 0.6630

Conversions

Conversions Part 2

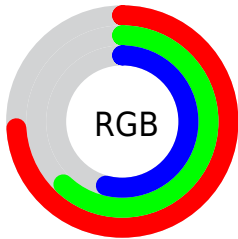
Format	Color
R _{YB}	188, 169, 138
Decimal	12361098
CIE Lab	67.00, 8.55, 14.22
CIE LCh	67, 16.593, 58.969
Yxy	36.6320, 0.3624, 0.3551
Android (android.graphics.Color)	4290551178 (0xFFBC9D8A)
YUV	164.1030, -12.8688, 20.9577
Hunter-Lab	60.5244, 4.3102, 13.8221

Details

The CIELCh color **67, 16.593, 58.969** is a light color, and the websafe version is hex **CC9999**. A complement of this color would be **68, 14.626, 244.831**, and the grayscale version is **67, 0.008, 296.813**.

A 20% lighter version of the original color is **87, 16.831, 60.358**, and **47, 16.631, 59.624** is the 20% darker color. If you saturate the color by 10%, you get **64, 23.617, 58.121**, and if you desaturate by 10%, it is **70, 10.015, 59.868**.

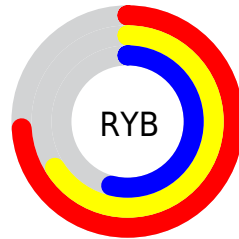
Distribution



Red (74%)

Green (62%)

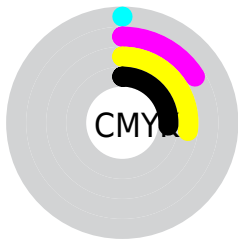
Blue (54%)



Red (74%)

Yellow (66%)

Blue (54%)

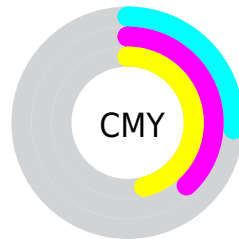


Cyan (0%)

Magenta (16%)

Yellow (27%)

Black (26%)



Cyan (26%)

Magenta (38%)

Yellow (46%)

Brightness & Saturation Gradients

These gradients show how the CIELCh color 67, 16.593, 58.969 changes by changing the brightness by 10 percent. The first figure shows a shift by +10% for each color and the second figure -10%.

Similar to the brightness gradients but the following saturation gradients show a change of the CIELCh color 67, 16.593, 58.969 by changing the saturation by 10% instead.

■ 67, 16.593, 58.969

■ 67, 16.593, 58.969

■ 100, 16.593,
58.969

■ 57, 16.593, 58.969

■ 87, 16.593, 58.969

■ 47, 16.593, 58.969

■ 97, 16.593, 58.969

■ 37, 16.593, 58.969

■ 27, 16.593, 58.969

■ 17, 16.593, 58.969

■ 7, 16.593, 58.969

■ 0, 16.593, 58.969

■ 67, 16.593, 58.969

■ 67, 16.593, 58.969

■ 64, 23.617, 58.121

■ 70, 10.015, 59.868

60, 31.103, 57.315

74, 3.852, 60.734

57, 39.026, 56.561

77, 1.935, 242.024

54, 47.288, 55.834

81, 7.387, 242.811

52, 55.629, 55.051

85, 12.543,
243.733

49, 63.484, 53.999

88, 17.439,
244.654

47, 69.891, 52.310

91, 18.152,
226.641

46, 71.978, 51.808

94, 20.202,
205.234

96, 21.692,
198.081

Harmonies

Complementary

The Complementary color scheme is a pair of colors which are on the opposite of each other on the color wheel.



67, 16.593, 58.969



68, 14.626, 244.831

Rectangle

The Rectangle color scheme consists of four colors that form a rectangle on the color wheel.



67, 16.593, 58.969



67, 16.593, 108.969



67, 16.593, 238.969



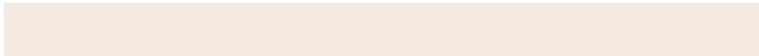
67, 16.593, 288.969

Sweetspot

The Sweet Spot groups the original color and five complimentary colors.



67, 16.593, 58.978



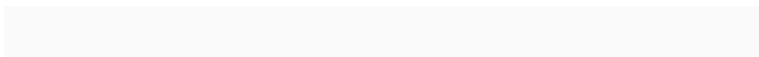
93, 5.819, 60.611



63, 25.811, 339.155



49, 4.154, 60.484



98, 0.011, 296.813



51, 0.007, 296.813

Same Dimension

The Same Dimension uses a secret algorithm to generate beautiful new colors.



67, 16.593, 58.978



83, 25.240, 58.465



73, 23.426, 101.245



38, 3.350, 60.508



39, 63.046, 52.316



5, 10.111, 47.223

Inverse Universe

The Inverse Universe completely reimagines the original color for something new.



68, 14.626, 244.831



84, 21.542, 245.845



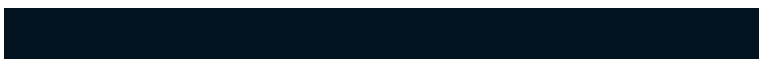
61, 24.459, 287.580



38, 3.220, 242.528



40, 39.263, 268.838



5, 10.275, 256.327

Previews

White Background



This preview shows how the CIELCh color 67, 16.593, 58.969 looks on a white background.

Color Contrast Check

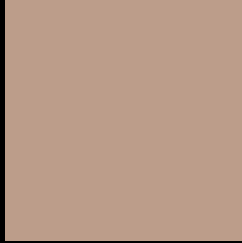
Large Text (above 18pt) WCAG AA × Fail

Any Text WCAG AA × Fail

Large Text (above 18pt) WCAG AAA × Fail

Any Text WCAG AAA × Fail

Black Background



This preview shows how the CIELCh color 67, 16.593, 58.969 looks on a black background.

Color Contrast Check

Large Text (above 18pt) WCAG AA ✓ Pass

Any Text WCAG AA ✓ Pass

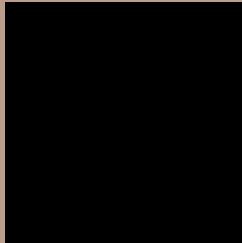
Large Text (above 18pt) WCAG AAA ✓ Pass

Any Text WCAG AAA ✓ Pass

If you want to check with other color combinations, try the [Color Contrast Checker](#).

CIELCh 67, 16.593, 58.969

Background



This preview shows how black text looks on a background with the CIELCh color 67, 16.593, 58.969.



This preview shows how white text looks on a background with the CIELCh color 67, 16.593, 58.969.

Color Blindness Simulation

Color vision deficiency is a very complex topic, and I could not describe the different causes any better than Wikipedia does, so if you want to learn more, you should check out their [article about color blindness](#).

Dichromacy



Original Color

67, 16.593, 58.969

Protanopia

67, 12.504, 93.995

Deuteranopia

67, 16.593, 58.969



Tritanopia
67, 16.107, 356.858

Trichromacy



Original Color
67, 16.593, 58.969

Protanomaly
67, 13.269, 79.695

Deuteranomaly
67, 16.593, 58.969

Tritanomaly
67, 14.270, 18.533

Monochromacy



Original Color
67, 16.593, 58.969

Achromatopsia
67, 0.008, 296.813

Achromatomaly
67, 5.726, 54.816

CSS Examples

Text

The CSS property to change the color of the text to CIELCh 67, 16.593, 58.969 is called "color". The color property can be set on classes, ids or directly on the HTML element.

This example shows how text in the color `rgb(188, 157, 138)` looks like.

```
.text, #text, p{  
    color:rgb(188, 157, 138)  
}
```

If you want to add a text shadow in that color use the text-shadow property, you can generate a text shadow directly with our [CSS Text Shadow Generator](#).

Here you see how black text with a 4 pixel rgb(188, 157, 138) colored shadow looks like.

```
.shadow{ text-shadow: 4px 4px 2px rgb(188, 157, 138) }
```

Border

The CSS property to change the border of an element to CIELCh 67, 16.593, 58.969 is called "border". The border property can be set on classes, ids or directly on the HTML element.

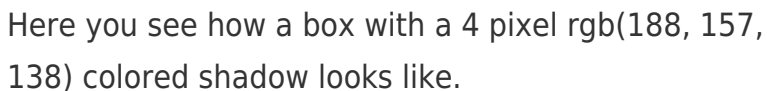
This example shows the color as border, it can be applied via the CSS property "border" or "border-color".

```
.border, #border, table{ border:4px solid rgb(188, 157, 138) }
```

If only the border color should be changed use the property `border-color`.

```
.border{ border-color:rgb(188, 157, 138) }
```

If you want to add a box shadow in that color use:



Here you see how a box with a 4 pixel `rgb(188, 157, 138)` colored shadow looks like.

```
.boxshadow{ -moz-box-shadow:4px 4px 4px 4px rgb(188, 157, 138); -webkit-box-shadow:4px 4px 4px 4px rgb(188, 157, 138); box-shadow:4px 4px 4px 4px rgb(188, 157, 138) }
```

Background

The CSS property to change the background color of an element to CIELCh 67, 16.593, 58.969 is called "background". The background property can be set on classes, ids or directly on the HTML element.

```
.background, #background, body{  
background: rgb(188, 157, 138) }
```

If only the background color should be changed can be used:

```
.background{ background-color: rgb(188,  
157, 138) }
```

This example shows the color as background, it is applied via the CSS property "background".

To optimize and compress your CSS code, you can use our [online CSS compressor and optimizer](#) based on csstidy. If you want to create a linear or radial gradient as background or border, check our [CSS Gradient Generator](#).

Hey! You found this booklet interesting? Support Converting Colors with the new Membership Option!

The pro membership hides all ads, plus gives you double the colors in the color bucket, and more awesome pro features!

[Learn more, Memberships starting at \\$2.50/m!](#)

**Follow me
on Twitter!**

@ConvertingColor