

# Converting Colors

CIELCh(67, 17.254, 75.259)

Have a look what the booklet for  
CIELCh(67, 17.254, 75.259) contains.

<b>CIELCh(67, 17.254, 75.259)</b> .....	3
<b><i>Conversions</i></b> .....	4
<b><i>Details</i></b> .....	6
<b><i>Harmonies</i></b> .....	11
<b><i>Previews</i></b> .....	20
<b><i>Color Blindness Simulation</i></b> .....	23
<b><i>CSS Examples</i></b> .....	26

# Color

**CIELCh(67, 17.254, 75.259)**

# Conversions

## Conversions Part 1

Format	Color
Hex	B69F85
RGB	182, 159, 133
RGB Percent	71%, 62%, 52%
CMY	0.2847, 0.3749, 0.4769
CMYK	0.00, 0.13, 0.27, 0.28
HSL	32°, 25%, 62%
HSV	32°, 27%, 72%
XYZ	36.1152, 36.6320, 27.4973
YIQ	162.9130, 22.0540, -3.2100

# Conversions

## Conversions Part 2

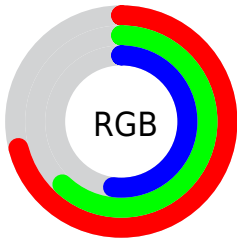
Format	Color
<a href="#">RYB</a>	<a href="#">176, 182, 133</a>
Decimal	<a href="#">11968389</a>
CIELab	<a href="#">67.00, 4.39, 16.69</a>
CIELCh	<a href="#">67, 17.254, 75.259</a>
Yxy	<a href="#">36.6320, 0.3603, 0.3654</a>
Android (android.graphics.Color)	<a href="#">4290158469</a> ( <a href="#">0xFFB69F85</a> )
YUV	<a href="#">162.9130, -14.7471, 16.7393</a>
Hunter-Lab	<a href="#">60.5244, 0.5942, 15.4305</a>

# Details

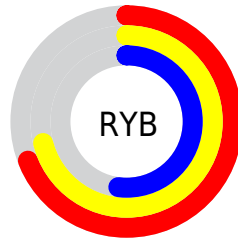
The CIELCh color  $67, 17.254, 75.259$  is a light color, and the websafe version is hex  $999966$ . A complement of this color would be  $64, 16.270, 262.771$ , and the grayscale version is  $67, 0.008, 296.813$ .

A 20% lighter version of the original color is  $87, 17.331, 76.653$ , and  $47, 17.400, 76.787$  is the 20% darker color. If you saturate the color by 10%, you get  $64, 24.171, 73.971$ , and if you desaturate by 10%, it is  $70, 10.611, 76.536$ .

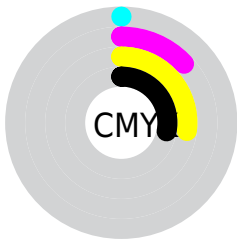
# Distribution



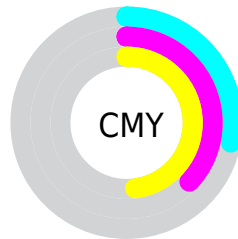
- Red (71%)
- Green (62%)
- Blue (52%)



- Red (69%)
- Yellow (71%)
- Blue (52%)



- Cyan (0%)
- Magenta (13%)
- Yellow (27%)
- Black (28%)



- Cyan (28%)
- Magenta (37%)
- Yellow (48%)

# Brightness & Saturation Gradients

These gradients show how the CIELCh color 67, 17.254, 75.259 changes by changing the brightness by 10 percent. The first figure shows a shift by +10% for each color and the second figure -10%.

Similar to the brightness gradients but the following saturation gradients show a change of the CIELCh color 67, 17.254, 75.259 by changing the saturation by 10% instead.



■ 67, 17.254, 75.259

■ 67, 17.254, 75.259

■ 100, 17.254,  
75.259

■ 57, 17.254, 75.259

■ 87, 17.254, 75.259

■ 47, 17.254, 75.259

■ 97, 17.254, 75.259

■ 37, 17.254, 75.259

■ 27, 17.254, 75.259

■ 17, 17.254, 75.259

■ 7, 17.254, 75.259

■ 0, 17.254, 75.259

■ 67, 17.254, 75.259

■ 67, 17.254, 75.259

■ 64, 24.171, 73.971

■ 70, 10.611, 76.536

62, 31.342, 72.651

72, 4.233, 77.744

59, 38.705, 71.300

75, 1.897, 259.212

57, 46.109, 69.881

78, 7.799, 260.268

55, 53.234, 68.314

81, 13.498,  
261.394

53, 59.494, 66.422

83, 19.016,  
262.485

51, 64.132, 63.956

86, 21.722,  
258.921

50, 65.511, 63.211

88, 19.888,  
244.343

91, 19.483,  
228.245

# Harmonies

# Complementary

The Complementary color scheme is a pair of colors which are on the opposite of each other on the color wheel.



67, 17.254, 75.259



64, 16.270, 262.771

# Rectangle

The Rectangle color scheme consists of four colors that form a rectangle on the color wheel.



67, 17.254, 75.259



67, 17.254, 125.259



67, 17.254, 255.259



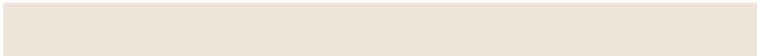
67, 17.254, 305.259

# Sweetspot

The Sweet Spot groups the original color and five complimentary colors.



67, 17.254, 75.267



91, 6.112, 77.600



61, 23.111, 347.025



48, 4.393, 77.422



97, 0.011, 296.813



50, 0.007, 296.813



# Same Dimension

The Same Dimension uses a secret algorithm to generate beautiful new colors.



67, 17.254, 75.267



83, 25.729, 74.536



73, 26.262, 108.332



37, 3.525, 77.458



43, 58.130, 63.706



5, 8.850, 64.648





# Inverse Universe

The Inverse Universe completely reimagines the original color for something new.



64, 16.270, 262.771



78, 23.927, 263.887



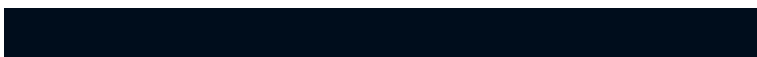
57, 27.982, 293.917



37, 3.466, 259.941



32, 52.330, 286.311

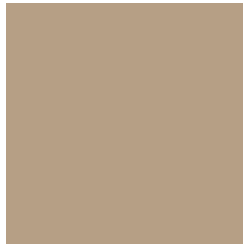


3, 10.507, 269.710



# Previews

## White Background



This preview shows how the CIELCh color 67, 17.254, 75.259 looks on a white background.

## Color Contrast Check

Large Text (above 18pt) WCAG AA × Fail

Any Text WCAG AA × Fail

Large Text (above 18pt) WCAG AAA × Fail

Any Text WCAG AAA × Fail

# Black Background



This preview shows how the CIELCh color 67, 17.254, 75.259 looks on a black background.

## Color Contrast Check

Large Text (above 18pt) WCAG AA ✓ Pass

Any Text WCAG AA ✓ Pass

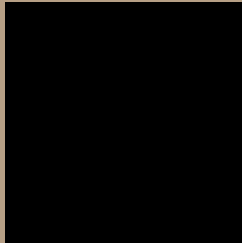
Large Text (above 18pt) WCAG AAA ✓ Pass

Any Text WCAG AAA ✓ Pass

If you want to check with other color combinations, try the [Color Contrast Checker](#).

# CIELCh 67, 17.254, 75.259

## Background



This preview shows how black text looks on a background with the CIELCh color 67, 17.254, 75.259.



This preview shows how white text looks on a background with the CIELCh color 67, 17.254, 75.259.

# Color Blindness Simulation

Color vision deficiency is a very complex topic, and I could not describe the different causes any better than Wikipedia does, so if you want to learn more, you should check out their [article about color blindness](#).

## Dichromacy



### Original Color

67, 17.254, 75.259

### Protanopia

67, 15.803, 95.139

### Deuteranopia

67, 18.478, 63.004



**Tritanopia**  
67, 13.627, 351.765



# Trichromacy



**Original Color**  
67, 17.254, 75.259

**Protanomaly**  
67, 16.434, 88.119

**Deuteranomaly**  
67, 17.966, 66.894

**Tritanomaly**  
67, 11.120, 26.015

# Monochromacy



**Original Color**  
67, 17.254, 75.259

**Achromatopsia**  
67, 0.008, 296.813

**Achromatomaly**  
67, 6.322, 79.828

# CSS Examples

## Text

The CSS property to change the color of the text to CIELCh 67, 17.254, 75.259 is called "color". The color property can be set on classes, ids or directly on the HTML element.

This example shows how text in the color `rgb(182, 159, 133)` looks like.

```
.text, #text, p{  
    color:rgb(182, 159, 133)  
}
```

If you want to add a text shadow in that color use the text-shadow property, you can generate a text shadow directly with our [CSS Text Shadow Generator](#).

Here you see how black text with a 4 pixel rgb(182, 159, 133) colored shadow looks like.

```
.shadow{ text-shadow: 4px 4px 2px rgb(182, 159, 133) }
```

## Border

The CSS property to change the border of an element to CIELCh 67, 17.254, 75.259 is called "border". The border property can be set on classes, ids or directly on the HTML element.

This example shows the color as border, it can be applied via the CSS property "border" or "border-color".

```
.border, #border, table{ border:4px solid rgb(182, 159, 133) }
```

If only the border color should be changed use the property `border-color`.

```
.border{ border-color:rgb(182, 159, 133) }
```

If you want to add a box shadow in that color use:

Here you see how a box with a 4 pixel `rgb(182, 159, 133)` colored shadow looks like.

```
.boxshadow{ -moz-box-shadow:4px 4px 4px  
4px rgb(182, 159, 133); -webkit-box-  
shadow:4px 4px 4px 4px rgb(182, 159, 133);  
box-shadow:4px 4px 4px 4px rgb(182, 159,  
133) }
```

# Background

The CSS property to change the background color of an element to CIELCh 67, 17.254, 75.259 is called "background". The background property can be set on classes, ids or directly on the HTML element.

```
.background, #background, body{  
background: rgb(182, 159, 133) }
```

If only the background color should be changed can be used:

```
.background{ background-color: rgb(182,  
159, 133) }
```

This example shows the color as background, it is applied via the CSS property "background".

To optimize and compress your CSS code, you can use our [online CSS compressor and optimizer](#) based on csstidy. If you want to create a linear or radial gradient as background or border, check our [CSS Gradient Generator](#).

Hey! You found this booklet interesting? Support Converting Colors with the new Membership Option!

The pro membership hides all ads, plus gives you double the colors in the color bucket, and more awesome pro features!

**[Learn more, Memberships starting at \\$2.50/m!](#)**

**Follow me  
on Twitter!**

@ConvertingColor