

Converting Colors

CIELCh(67, 18.133, 28.039)

Have a look what the booklet for
CIELCh(67, 18.133, 28.039) contains.

CIELCh(67, 18.357, 27.885)	3
<i>Conversions</i>	4
<i>Details</i>	6
<i>Harmonies</i>	11
<i>Previews</i>	20
<i>Color Blindness Simulation</i>	23
<i>CSS Examples</i>	26

Color

CIELCh(67, 18.357, 27.885)

Conversions

Conversions Part 1	
Format	Color
Hex	C59894
RGB	197, 152, 148
RGB Percent	77%, 60%, 58%
CMY	0.2261, 0.4026, 0.4183
CMYK	0.00, 0.23, 0.25, 0.23
HSL	5°, 30%, 68%
HSV	5°, 25%, 77%
XYZ	39.7730, 36.6320, 33.1292
YIQ	164.9990, 28.1040, 8.2960

Conversions

Conversions Part 2

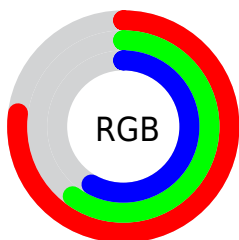
Format	Color
RYB	197, 152, 148
Decimal	12949652
CIELab	67.00, 16.23, 8.59
CIELCh	67, 18.357, 27.885
Yxy	36.6320, 0.3631, 0.3344
Android (android.graphics.Color)	4291139732 (0xFFC59894)
YUV	164.9990, -8.3805, 28.0649
Hunter-Lab	60.5244, 11.3819, 9.9135

Details

The CIELCh color **67, 18.357, 27.885** is a light color, and the websafe version is hex **CC9999**. A complement of this color would be **75, 15.466, 206.370**, and the grayscale version is **68, 0.008, 296.813**.

A 20% lighter version of the original color is **87, 18.339, 27.205**, and **47, 18.238, 28.951** is the 20% darker color. If you saturate the color by 10%, you get **62, 26.800, 28.697**, and if you desaturate by 10%, it is **72, 10.526, 27.297**.

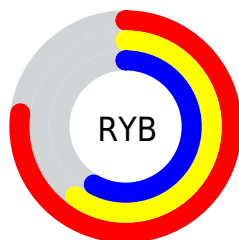
Distribution



Red (77%)

Green (60%)

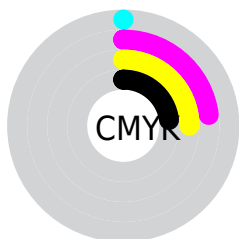
Blue (58%)



Red (77%)

Yellow (60%)

Blue (58%)

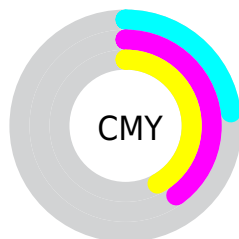


Cyan (0%)

Magenta (23%)

Yellow (25%)

Black (23%)



Cyan (23%)

Magenta (40%)

Yellow (42%)


Brightness & Saturation Gradients

These gradients show how the CIELCh color 67, 18.357, 27.885 changes by changing the brightness by 10 percent. The first figure shows a shift by +10% for each color and the second figure -10%.

Similar to the brightness gradients but the following saturation gradients show a change of the CIELCh color 67, 18.357, 27.885 by changing the saturation by 10% instead.

 67, 18.357, 27.885

 67, 18.357, 27.885

 100, 18.357,
27.885

 57, 18.357, 27.885

 87, 18.357, 27.885

 47, 18.357, 27.885

 97, 18.357, 27.885

 37, 18.357, 27.885

 27, 18.357, 27.885

 17, 18.357, 27.885

 7, 18.357, 27.885

 0, 18.357, 27.885

 67, 18.357, 27.885

 67, 18.357, 27.885

 62, 26.800, 28.697

 72, 10.526, 27.297

 58, 35.834, 29.786

 77, 3.295, 26.779


 53, 45.371, 31.233

 82, 3.376, 206.834


 50, 55.236, 33.098

 88, 9.540, 206.550

 46, 65.121, 35.372

 93, 15.251,
206.421

 44, 74.449, 37.844

 96, 18.905,
198.257

 42, 81.965, 39.852

 42, 85.061, 40.848

Harmonies

Complementary

The Complementary color scheme is a pair of colors which are on the opposite of each other on the color wheel.



67, 18.357, 27.885



75, 15.466, 206.370

Rectangle

The Rectangle color scheme consists of four colors that form a rectangle on the color wheel.



67, 18.357, 27.885



67, 18.357, 77.885



67, 18.357, 207.885



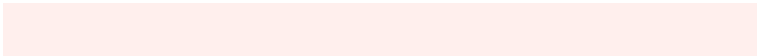
67, 18.357, 257.885

Sweetspot

The Sweet Spot groups the original color and five complimentary colors.



67, 18.355, 27.892



96, 5.923, 26.912



67, 30.841, 327.681



50, 3.858, 26.944



0, 0.000, 0.000



53, 0.007, 296.813

Same Dimension

The Same Dimension uses a secret algorithm to generate beautiful new colors.



67, 18.355, 27.892



81, 27.923, 28.313



73, 17.344, 79.071



39, 3.959, 27.027



34, 73.514, 40.886



4, 15.106, 23.871

Inverse Universe

The Inverse Universe completely reimagines the original color for something new.



75, 15.466, 206.370



94, 22.516, 206.340



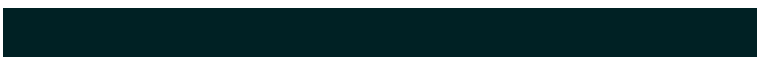
69, 16.666, 266.051



41, 3.727, 206.652



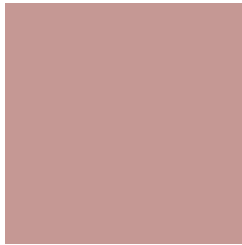
57, 32.485, 210.442



11, 11.968, 207.069

Previews

White Background



This preview shows how the CIELCh color 67, 18.357, 27.885 looks on a white background.

Color Contrast Check

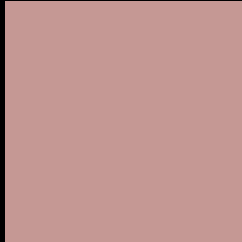
Large Text (above 18pt) WCAG AA × Fail

Any Text WCAG AA × Fail

Large Text (above 18pt) WCAG AAA × Fail

Any Text WCAG AAA × Fail

Black Background



This preview shows how the CIE LCh color 67, 18.357, 27.885 looks on a black background.

Color Contrast Check

Large Text (above 18pt) WCAG AA ✓ Pass

Any Text WCAG AA ✓ Pass

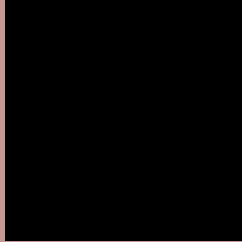
Large Text (above 18pt) WCAG AAA ✓ Pass

Any Text WCAG AAA ✓ Pass

If you want to check with other color combinations, try the [Color Contrast Checker](#).

CIELCh 67, 18.357, 27.885

Background



This preview shows how black text looks on a background with the CIELCh color 67, 18.357, 27.885.



This preview shows how white text looks on a background with the CIELCh color 67, 18.357, 27.885.

Color Blindness Simulation

Color vision deficiency is a very complex topic, and I could not describe the different causes any better than Wikipedia does, so if you want to learn more, you should check out their [article about color blindness](#).

Dichromacy



Original Color

67, 18.357, 27.885

Protanopia

67, 5.306, 88.109

Deuteranopia

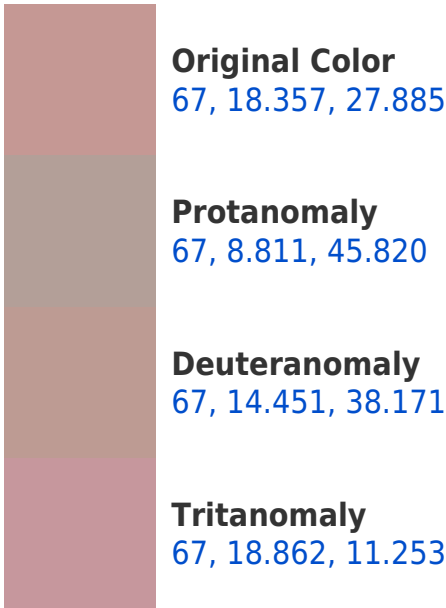
67, 12.578, 46.071



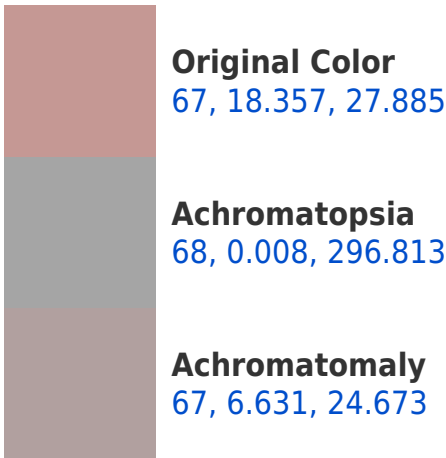
Tritanopia

67, 20.217, 2.498

Trichromacy



Monochromacy



CSS Examples

Text

The CSS property to change the color of the text to CIELCh 67, 18.357, 27.885 is called "color". The color property can be set on classes, ids or directly on the HTML element.

This example shows how text in the color `rgb(197, 152, 148)` looks like.

```
.text, #text, p{  
    color:rgb(197, 152, 148)  
}
```

If you want to add a text shadow in that color use the text-shadow property, you can generate a text shadow directly with our [CSS Text Shadow Generator](#).

Here you see how black text with a 4 pixel rgb(197, 152, 148) colored shadow looks like.

```
.shadow{ text-shadow: 4px 4px 2px rgb(197, 152, 148) }
```

Border

The CSS property to change the border of an element to CIELCh 67, 18.357, 27.885 is called "border". The border property can be set on classes, ids or directly on the HTML element.

This example shows the color as border, it can be applied via the CSS property "border" or "border-color".

```
.border, #border, table{ border:4px solid rgb(197, 152, 148) }
```

If only the border color should be changed use the property `border-color`.

```
.border{ border-color:rgb(197, 152, 148) }
```

If you want to add a box shadow in that color use:

Here you see how a box with a 4 pixel `rgb(197, 152, 148)` colored shadow looks like.

```
.boxshadow{ -moz-box-shadow:4px 4px 4px  
4px rgb(197, 152, 148); -webkit-box-  
shadow:4px 4px 4px 4px rgb(197, 152, 148);  
box-shadow:4px 4px 4px 4px rgb(197, 152,  
148) }
```

Background

The CSS property to change the background color of an element to CIELCh 67, 18.357, 27.885 is called "background". The background property can be set on classes, ids or directly on the HTML element.

```
.background, #background, body{  
background: rgb(197, 152, 148) }
```

If only the background color should be changed can be used:

```
.background{ background-color: rgb(197,  
152, 148) }
```

This example shows the color as background, it is applied via the CSS property "background".

To optimize and compress your CSS code, you can use our [online CSS compressor and optimizer](#) based on csstidy. If you want to create a linear or radial gradient as background or border, check our [CSS Gradient Generator](#).

Hey! You found this booklet
interesting? Support Converting
Colors with the new Membership
Option!

The pro membership hides all ads, plus gives you
double the colors in the color bucket, and more
awesome pro features!

[Learn more, Memberships starting at \\$2.50/m!](#)

**Follow me
on Twitter!**

@ConvertingColor