

Converting Colors

CIELCh(67, 18.218, 49.422)

Have a look what the booklet for
CIELCh(67, 18.218, 49.422) contains.

CIELCh(67, 18.077, 49.466)	3
<i>Conversions</i>	4
<i>Details</i>	6
<i>Harmonies</i>	11
<i>Previews</i>	20
<i>Color Blindness Simulation</i>	23
<i>CSS Examples</i>	26

Color

CIELCh(67, 18.077, 49.466)

Conversions

Conversions Part 1

Format	Color
Hex	C19B8B
RGB	193, 155, 139
RGB Percent	76%, 61%, 55%
CMY	0.2432, 0.3922, 0.4550
CMYK	0.00, 0.20, 0.28, 0.24
HSL	18°, 30%, 65%
HSV	18°, 28%, 76%
XYZ	38.3615, 36.6320, 29.4656
YIQ	164.5380, 27.7840, 3.0800

Conversions

Conversions Part 2

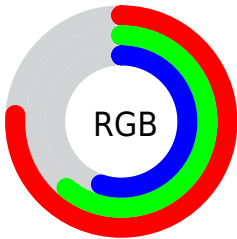
Format	Color
R _Y B	193, 162, 139
Decimal	12688267
CIE Lab	67.00, 11.75, 13.74
CIE LCh	67, 18.077, 49.466
Yxy	36.6320, 0.3672, 0.3507
Android (android.graphics.Color)	4290878347 (0xFFC19B8B)
YUV	164.5380, -12.5902, 24.9612
Hunter-Lab	60.5244, 7.2192, 13.5023

Details

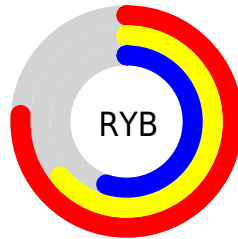
The CIELCh color $67, 18.077, 49.466$ is a light color, and the websafe version is hex `CC9999`. A complement of this color would be $70, 15.292, 233.745$, and the grayscale version is $68, 0.008, 296.813$.

A 20% lighter version of the original color is $87, 17.915, 47.940$, and $47, 17.854, 50.236$ is the 20% darker color. If you saturate the color by 10%, you get $63, 25.513, 49.062$, and if you desaturate by 10%, it is $71, 11.177, 49.972$.

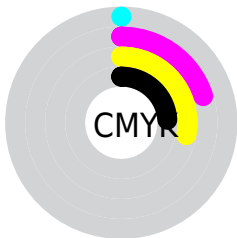
Distribution



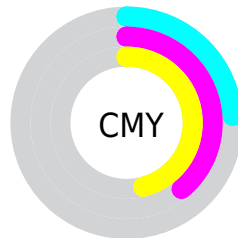
- Red (76%)
- Green (61%)
- Blue (55%)



- Red (76%)
- Yellow (64%)
- Blue (55%)



- Cyan (0%)
- Magenta (20%)
- Yellow (28%)
- Black (24%)



- Cyan (24%)
- Magenta (39%)
- Yellow (46%)

Brightness & Saturation Gradients

These gradients show how the CIELCh color 67, 18.077, 49.466 changes by changing the brightness by 10 percent. The first figure shows a shift by +10% for each color and the second figure -10%.

Similar to the brightness gradients but the following saturation gradients show a change of the CIELCh color 67, 18.077, 49.466 by changing the saturation by 10% instead.

■ 67, 18.077, 49.466

■ 67, 18.077, 49.466

■ 100, 18.077,
49.466

■ 57, 18.077, 49.466

■ 87, 18.077, 49.466

■ 47, 18.077, 49.466

■ 97, 18.077, 49.466

■ 37, 18.077, 49.466

■ 27, 18.077, 49.466

■ 17, 18.077, 49.466

■ 7, 18.077, 49.466

■ 0, 18.077, 49.466

■ 67, 18.077, 49.466

■ 67, 18.077, 49.466

■ 63, 25.513, 49.062

■ 71, 11.177, 49.972

60, 33.502, 48.760

75, 4.777, 50.500

56, 42.019, 48.583

79, 1.170, 231.665

53, 50.951, 48.510

83, 6.711, 231.989

50, 60.013, 48.452

87, 11.894,
232.650

47, 68.552, 48.156

91, 16.762,
233.339

45, 75.522, 47.249

45, 76.900, 47.154

95, 18.684,
206.200

96, 20.219,
198.174

Harmonies

Complementary

The Complementary color scheme is a pair of colors which are on the opposite of each other on the color wheel.



67, 18.077, 49.466



70, 15.292, 233.745

Rectangle

The Rectangle color scheme consists of four colors that form a rectangle on the color wheel.



67, 18.077, 49.466



67, 18.077, 99.466



67, 18.077, 229.466



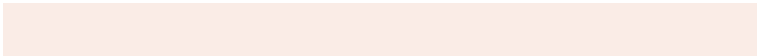
67, 18.077, 279.466

Sweetspot

The Sweet Spot groups the original color and five complimentary colors.



67, 18.076, 49.474



94, 5.909, 50.493



64, 29.366, 335.576



50, 4.223, 50.417



99, 0.012, 296.813



52, 0.007, 296.813

Same Dimension

The Same Dimension uses a secret algorithm to generate beautiful new colors.



67, 18.076, 49.474



82, 27.795, 49.192



74, 23.224, 96.095



39, 3.422, 50.431



37, 66.794, 47.608



5, 11.900, 38.846

Inverse Universe

The Inverse Universe completely reimagines the original color for something new.



70, 15.292, 233.745



86, 22.468, 234.648



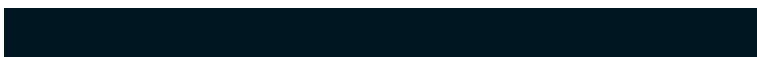
63, 23.881, 283.294



39, 3.255, 231.881



45, 34.302, 254.848



7, 10.549, 244.603

Previews

White Background



This preview shows how the CIELCh color 67, 18.077, 49.466 looks on a white background.

Color Contrast Check

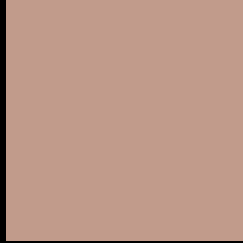
Large Text (above 18pt) WCAG AA × Fail

Any Text WCAG AA × Fail

Large Text (above 18pt) WCAG AAA × Fail

Any Text WCAG AAA × Fail

Black Background



This preview shows how the CIELCh color 67, 18.077, 49.466 looks on a black background.

Color Contrast Check

Large Text (above 18pt) WCAG AA ✓ Pass

Any Text WCAG AA ✓ Pass

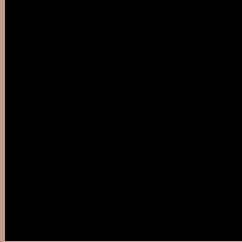
Large Text (above 18pt) WCAG AAA ✓ Pass

Any Text WCAG AAA ✓ Pass

If you want to check with other color combinations, try the [Color Contrast Checker](#).

CIELCh 67, 18.077, 49.466

Background



This preview shows how black text looks on a background with the CIELCh color 67, 18.077, 49.466.



This preview shows how white text looks on a background with the CIELCh color 67, 18.077, 49.466.

Color Blindness Simulation

Color vision deficiency is a very complex topic, and I could not describe the different causes any better than Wikipedia does, so if you want to learn more, you should check out their [article about color blindness](#).

Dichromacy



Original Color

67, 18.077, 49.466

Protanopia

67, 11.443, 92.762

Deuteranopia

67, 16.222, 57.581



Tritanopia
67, 18.700, 0.700

Trichromacy



Original Color
67, 18.077, 49.466

Protanomaly
67, 12.570, 71.443

Deuteranomaly
67, 16.926, 53.672

Tritanomaly
67, 17.145, 17.385

Monochromacy



Original Color
67, 18.077, 49.466

Achromatopsia
68, 0.008, 296.813

Achromatomaly
67, 6.115, 46.427

CSS Examples

Text

The CSS property to change the color of the text to CIELCh 67, 18.077, 49.466 is called "color". The color property can be set on classes, ids or directly on the HTML element.

This example shows how text in the color `rgb(193, 155, 139)` looks like.

```
.text, #text, p{  
    color:rgb(193, 155, 139)  
}
```

If you want to add a text shadow in that color use the text-shadow property, you can generate a text shadow directly with our [CSS Text Shadow Generator](#).

Here you see how black text with a 4 pixel rgb(193, 155, 139) colored shadow looks like.

```
.shadow{ text-shadow: 4px 4px 2px rgb(193, 155, 139) }
```

Border

The CSS property to change the border of an element to CIELCh 67, 18.077, 49.466 is called "border". The border property can be set on classes, ids or directly on the HTML element.

This example shows the color as border, it can be applied via the CSS property "border" or "border-color".

```
.border, #border, table{ border:4px solid rgb(193, 155, 139) }
```

If only the border color should be changed use the property `border-color`.

```
.border{ border-color:rgb(193, 155, 139) }
```

If you want to add a box shadow in that color use:

Here you see how a box with a 4 pixel `rgb(193, 155, 139)` colored shadow looks like.

```
.boxshadow{ -moz-box-shadow:4px 4px 4px  
4px rgb(193, 155, 139); -webkit-box-  
shadow:4px 4px 4px 4px rgb(193, 155, 139);  
box-shadow:4px 4px 4px 4px rgb(193, 155,  
139) }
```

Background

The CSS property to change the background color of an element to CIELCh 67, 18.077, 49.466 is called "background". The background property can be set on classes, ids or directly on the HTML element.

```
.background, #background, body{  
background: rgb(193, 155, 139) }
```

If only the background color should be changed can be used:

```
.background{ background-color: rgb(193,  
155, 139) }
```

This example shows the color as background, it is applied via the CSS property "background".

To optimize and compress your CSS code, you can use our [online CSS compressor and optimizer](#) based on csstidy. If you want to create a linear or radial gradient as background or border, check our [CSS Gradient Generator](#).

Hey! You found this booklet interesting? Support Converting Colors with the new Membership Option!

The pro membership hides all ads, plus gives you double the colors in the color bucket, and more awesome pro features!

[Learn more, Memberships starting at \\$2.50/m!](#)

**Follow me
on Twitter!**

@ConvertingColor