

# Converting Colors

CIELCh(67, 18.688, 44.900)

Have a look what the booklet for  
CIELCh(67, 18.688, 44.900) contains.

<b>CIELCh(67, 18.660, 44.903)</b> .....	3
<i><b>Conversions</b></i> .....	4
<i><b>Details</b></i> .....	6
<i><b>Harmonies</b></i> .....	11
<i><b>Previews</b></i> .....	20
<i><b>Color Blindness Simulation</b></i> .....	23
<i><b>CSS Examples</b></i> .....	26

# Color

**CIELCh(67, 18.660, 44.903)**

# Conversions

## Conversions Part 1

Format	Color
Hex	C39A8C
RGB	195, 154, 140
RGB Percent	76%, 60%, 55%
CMY	0.2351, 0.3959, 0.4508
CMYK	0.00, 0.21, 0.28, 0.24
HSL	15°, 31%, 66%
HSV	15°, 28%, 76%
XYZ	38.8208, 36.6320, 29.8545
YIQ	164.6630, 28.9300, 4.3380

# Conversions

## Conversions Part 2

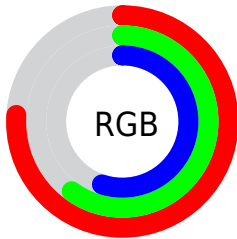
Format	Color
R <sub>YB</sub>	195, 159, 140
Decimal	12819084
CIE <sub>Lab</sub>	67.00, 13.22, 13.17
CIE <sub>LCh</sub>	67, 18.660, 44.903
Yxy	36.6320, 0.3686, 0.3479
Android (android.graphics.Color)	4291009164 (0xFFC39A8C)
YUV	164.6630, -12.1589, 26.6055
Hunter-Lab	60.5244, 8.5736, 13.1214

# Details

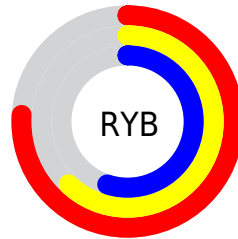
The CIELCh color  $67, 18.660, 44.903$  is a light color, and the websafe version is hex `CC9999`. A complement of this color would be  $71, 15.565, 228.053$ , and the grayscale version is  $68, 0.008, 296.813$ .

A 20% lighter version of the original color is  $87, 18.491, 43.582$ , and  $47, 18.477, 45.349$  is the 20% darker color. If you saturate the color by 10%, you get  $63, 26.323, 44.751$ , and if you desaturate by 10%, it is  $71, 11.567, 45.183$ .

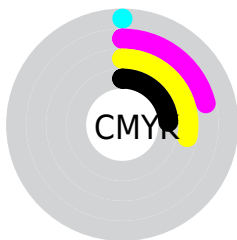
# Distribution



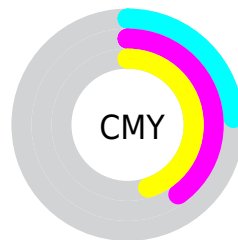
- Red (76%)
- Green (60%)
- Blue (55%)



- Red (76%)
- Yellow (62%)
- Blue (55%)



- Cyan (0%)
- Magenta (21%)
- Yellow (28%)
- Black (24%)



- Cyan (24%)
- Magenta (40%)
- Yellow (45%)

# Brightness & Saturation Gradients


These gradients show how the CIELCh color 67, 18.660, 44.903 changes by changing the brightness by 10 percent. The first figure shows a shift by +10% for each color and the second figure -10%.

Similar to the brightness gradients but the following saturation gradients show a change of the CIELCh color 67, 18.660, 44.903 by changing the saturation by 10% instead.



 67, 18.660, 44.903

 67, 18.660, 44.903

 100, 18.660,  
44.903

 57, 18.660, 44.903

 87, 18.660, 44.903

 47, 18.660, 44.903

 97, 18.660, 44.903

 37, 18.660, 44.903

 27, 18.660, 44.903

 17, 18.660, 44.903

 7, 18.660, 44.903

 0, 18.660, 44.903

 67, 18.660, 44.903

 67, 18.660, 44.903

 63, 26.323, 44.751

 71, 11.567, 45.183

59, 34.572, 44.736

75, 5.008, 45.509

56, 43.374, 44.887

80, 1.063, 226.551

52, 52.610, 45.192

84, 6.698, 226.646

49, 61.981, 45.564

88, 11.947,  
227.149

47, 70.804, 45.736

93, 16.458,  
224.195

44, 77.963, 45.310

44, 79.217, 45.321

96, 19.598,  
198.213

# Harmonies

# Complementary

The Complementary color scheme is a pair of colors which are on the opposite of each other on the color wheel.



67, 18.660, 44.903



71, 15.565, 228.053

# Rectangle

The Rectangle color scheme consists of four colors that form a rectangle on the color wheel.



67, 18.660, 44.903



67, 18.660, 94.903



67, 18.660, 224.903



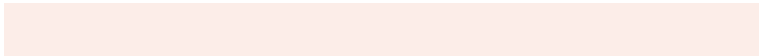
67, 18.660, 274.903

# Sweetspot

The Sweet Spot groups the original color and five complimentary colors.



67, 18.659, 44.911



95, 6.023, 45.511



65, 30.547, 334.236



50, 4.342, 45.464



0, 0.000, 0.000



53, 0.007, 296.813



# Same Dimension

The Same Dimension uses a secret algorithm to generate beautiful new colors.



67, 18.659, 44.911



82, 28.460, 44.794



74, 22.876, 93.821



39, 3.461, 45.473



36, 68.244, 45.748



5, 12.102, 35.736



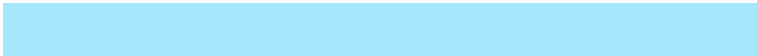


# Inverse Universe

The Inverse Universe completely reimagines the original color for something new.



71, 15.565, 228.053



88, 22.644, 228.767



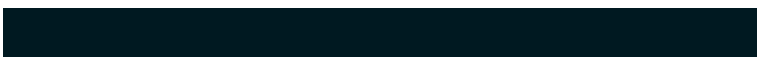
64, 23.327, 281.279



40, 3.278, 226.577



47, 32.456, 246.648



7, 10.368, 237.449



# Previews

## White Background



This preview shows how the CIELCh color 67, 18.660, 44.903 looks on a white background.

## Color Contrast Check

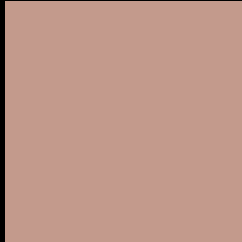
Large Text (above 18pt) WCAG AA × Fail

Any Text WCAG AA × Fail

Large Text (above 18pt) WCAG AAA × Fail

Any Text WCAG AAA × Fail

# Black Background



This preview shows how the CIELCh color 67, 18.660, 44.903 looks on a black background.

## Color Contrast Check

Large Text (above 18pt) WCAG AA ✓ Pass

Any Text WCAG AA ✓ Pass

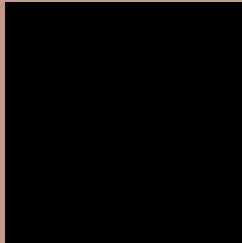
Large Text (above 18pt) WCAG AAA ✓ Pass

Any Text WCAG AAA ✓ Pass

If you want to check with other color combinations, try the [Color Contrast Checker](#).

# CIELCh 67, 18.660, 44.903

## Background



This preview shows how black text looks on a background with the CIELCh color 67, 18.660, 44.903.



This preview shows how white text looks on a background with the CIELCh color 67, 18.660, 44.903.

# Color Blindness Simulation

Color vision deficiency is a very complex topic, and I could not describe the different causes any better than Wikipedia does, so if you want to learn more, you should check out their [article about color blindness](#).

## Dichromacy



### Original Color

67, 18.660, 44.903

### Protanopia

67, 10.914, 92.046

### Deuteranopia

67, 16.222, 57.581



**Tritanopia**  
67, 19.308, 3.181



# Trichromacy



**Original Color**  
67, 18.660, 44.903

**Protanomaly**  
67, 12.395, 68.514

**Deuteranomaly**  
67, 17.280, 52.926

**Tritanomaly**  
67, 17.960, 17.636

# Monochromacy



**Original Color**  
67, 18.660, 44.903

**Achromatopsia**  
68, 0.008, 296.813

**Achromatomaly**  
67, 6.473, 44.875

# CSS Examples

## Text

The CSS property to change the color of the text to CIELCh 67, 18.660, 44.903 is called "color". The color property can be set on classes, ids or directly on the HTML element.

This example shows how text in the color `rgb(195, 154, 140)` looks like.

```
.text, #text, p{  
    color:rgb(195, 154, 140)  
}
```

If you want to add a text shadow in that color use the text-shadow property, you can generate a text shadow directly with our [CSS Text Shadow Generator](#).

Here you see how black text with a 4 pixel rgb(195, 154, 140) colored shadow looks like.

```
.shadow{ text-shadow: 4px 4px 2px rgb(195, 154, 140) }
```

## Border

The CSS property to change the border of an element to CIELCh 67, 18.660, 44.903 is called "border". The border property can be set on classes, ids or directly on the HTML element.

This example shows the color as border, it can be applied via the CSS property "border" or "border-color".

```
.border, #border, table{ border:4px solid rgb(195, 154, 140) }
```

If only the border color should be changed use the property `border-color`.

```
.border{ border-color:rgb(195, 154, 140) }
```

If you want to add a box shadow in that color use:

Here you see how a box with a 4 pixel `rgb(195, 154, 140)` colored shadow looks like.

```
.boxshadow{ -moz-box-shadow:4px 4px 4px  
4px rgb(195, 154, 140); -webkit-box-  
shadow:4px 4px 4px 4px rgb(195, 154, 140);  
box-shadow:4px 4px 4px 4px rgb(195, 154,  
140) }
```

# Background

The CSS property to change the background color of an element to CIELCh 67, 18.660, 44.903 is called "background". The background property can be set on classes, ids or directly on the HTML element.

```
.background, #background, body{  
background: rgb(195, 154, 140) }
```

If only the background color should be changed can be used:

```
.background{ background-color: rgb(195,  
154, 140) }
```

This example shows the color as background, it is applied via the CSS property "background".

To optimize and compress your CSS code, you can use our [online CSS compressor and optimizer](#) based on csstidy. If you want to create a linear or radial gradient as background or border, check our [CSS Gradient Generator](#).

Hey! You found this booklet interesting? Support Converting Colors with the new Membership Option!

The pro membership hides all ads, plus gives you double the colors in the color bucket, and more awesome pro features!

**[Learn more, Memberships starting at \\$2.50/m!](#)**

**Follow me  
on Twitter!**

@ConvertingColor