

Converting Colors

CIELCh(67, 19.937, 47.955)

Have a look what the booklet for
CIELCh(67, 19.937, 47.955) contains.

CIELCh(67, 19.907, 48.479)	3
<i>Conversions</i>	4
<i>Details</i>	6
<i>Harmonies</i>	11
<i>Previews</i>	20
<i>Color Blindness Simulation</i>	23
<i>CSS Examples</i>	26

Color

CIELCh(67, 19.907, 48.479)

Conversions

Conversions Part 1

Format	Color
Hex	C49A89
RGB	196, 154, 137
RGB Percent	77%, 60%, 54%
CMY	0.2315, 0.3962, 0.4629
CMYK	0.00, 0.21, 0.30, 0.23
HSL	17°, 33%, 65%
HSV	17°, 30%, 77%
XYZ	38.8143, 36.6320, 28.6762
YIQ	164.6200, 30.4890, 3.6170

Conversions

Conversions Part 2

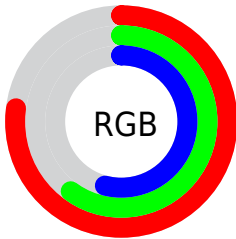
Format	Color
R _Y B	196, 161, 137
Decimal	12884617
CIE Lab	67.00, 13.20, 14.90
CIE LCh	67, 19.907, 48.479
Yxy	36.6320, 0.3728, 0.3518
Android (android.graphics.Color)	4291074697 (0xFFC49A89)
YUV	164.6200, -13.6167, 27.5203
Hunter-Lab	60.5244, 8.5545, 14.2756

Details

The CIELCh color $67, 19.907, 48.479$ is a light color, and the websafe version is hex `CC9999`. A complement of this color would be $71, 16.546, 232.897$, and the grayscale version is $68, 0.008, 296.813$.

A 20% lighter version of the original color is $87, 19.894, 48.410$, and $47, 19.868, 49.077$ is the 20% darker color. If you saturate the color by 10%, you get $63, 27.584, 48.145$, and if you desaturate by 10%, it is $71, 12.784, 48.926$.

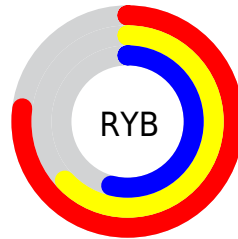
Distribution



Red (77%)

Green (60%)

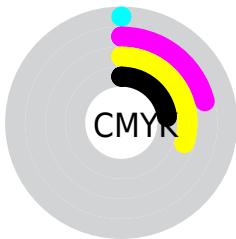
Blue (54%)



Red (77%)

Yellow (63%)

Blue (54%)

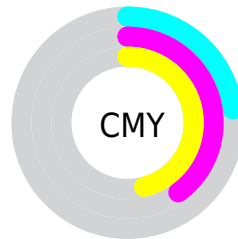


Cyan (0%)

Magenta (21%)

Yellow (30%)

Black (23%)



Cyan (23%)

Magenta (40%)

Yellow (46%)

Brightness & Saturation Gradients

These gradients show how the CIELCh color 67, 19.907, 48.479 changes by changing the brightness by 10 percent. The first figure shows a shift by +10% for each color and the second figure -10%.

Similar to the brightness gradients but the following saturation gradients show a change of the CIELCh color 67, 19.907, 48.479 by changing the saturation by 10% instead.

67, 19.907, 48.479

67, 19.907, 48.479

100, 19.907,
48.479

57, 19.907, 48.479

87, 19.907, 48.479

47, 19.907, 48.479

97, 19.907, 48.479

37, 19.907, 48.479

27, 19.907, 48.479

17, 19.907, 48.479

7, 19.907, 48.479

0, 19.907, 48.479

67, 19.907, 48.479

67, 19.907, 48.479

63, 27.584, 48.145

71, 12.784, 48.926

59, 35.828, 47.925

75, 6.184, 49.419

56, 44.597, 47.837

79, 0.060, 41.646

53, 53.749, 47.853

83, 5.639, 230.819

50, 62.933, 47.856

87, 10.959,
231.436

47, 71.365, 47.538

92, 15.947,
232.095

45, 78.150, 46.742

95, 18.238,
203.837

96, 19.327,
198.230

Harmonies

Complementary

The Complementary color scheme is a pair of colors which are on the opposite of each other on the color wheel.



67, 19.907, 48.479



71, 16.546, 232.897

Rectangle

The Rectangle color scheme consists of four colors that form a rectangle on the color wheel.



67, 19.907, 48.479



67, 19.907, 98.479



67, 19.907, 228.479



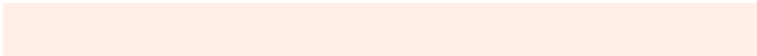
67, 19.907, 278.479

Sweetspot

The Sweet Spot groups the original color and five complimentary colors.



67, 19.906, 48.486



95, 6.794, 49.465



64, 31.981, 335.742



50, 4.748, 49.394



0, 0.000, 0.000



53, 0.007, 296.813

Same Dimension

The Same Dimension uses a secret algorithm to generate beautiful new colors.



67, 19.906, 48.486



82, 30.238, 48.253



74, 25.313, 95.832



39, 3.428, 49.454



37, 67.082, 47.221



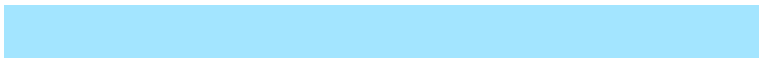
5, 11.937, 38.230

Inverse Universe

The Inverse Universe completely reimagines the original color for something new.



71, 16.546, 232.897



87, 23.994, 233.804



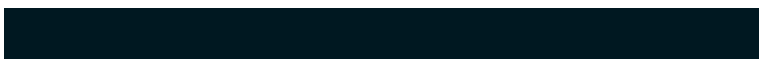
63, 26.099, 283.671



39, 3.257, 230.840



45, 33.891, 253.302



7, 10.502, 243.255

Previews

White Background



This preview shows how the CIELCh color 67, 19.907, 48.479 looks on a white background.

Color Contrast Check

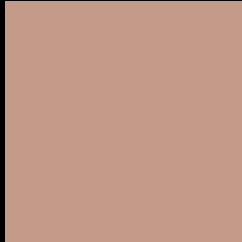
Large Text (above 18pt) WCAG AA × Fail

Any Text WCAG AA × Fail

Large Text (above 18pt) WCAG AAA × Fail

Any Text WCAG AAA × Fail

Black Background



This preview shows how the CIE LCh color 67, 19.907, 48.479 looks on a black background.

Color Contrast Check

Large Text (above 18pt) WCAG AA ✓ Pass

Any Text WCAG AA ✓ Pass

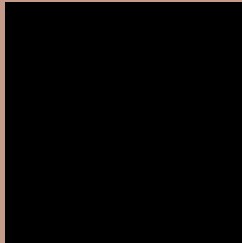
Large Text (above 18pt) WCAG AAA ✓ Pass

Any Text WCAG AAA ✓ Pass

If you want to check with other color combinations, try the [Color Contrast Checker](#).

CIELCh 67, 19.907, 48.479

Background



This preview shows how black text looks on a background with the CIELCh color 67, 19.907, 48.479.



This preview shows how white text looks on a background with the CIELCh color 67, 19.907, 48.479.

Color Blindness Simulation

Color vision deficiency is a very complex topic, and I could not describe the different causes any better than Wikipedia does, so if you want to learn more, you should check out their [article about color blindness](#).

Dichromacy



Original Color

67, 19.907, 48.479

Protanopia

67, 12.504, 93.995

Deuteranopia

67, 17.684, 60.662



Tritanopia
67, 20.217, 2.498

Trichromacy



Original Color
67, 19.907, 48.479

Protanomaly
67, 13.724, 72.692

Deuteranomaly
67, 18.672, 56.181

Tritanomaly
67, 18.802, 17.884

Monochromacy



Original Color
67, 19.907, 48.479

Achromatopsia
68, 0.008, 296.813

Achromatomaly
67, 6.738, 49.038

CSS Examples

Text

The CSS property to change the color of the text to CIELCh 67, 19.907, 48.479 is called "color". The color property can be set on classes, ids or directly on the HTML element.

This example shows how text in the color `rgb(196, 154, 137)` looks like.

```
.text, #text, p{  
    color:rgb(196, 154, 137)  
}
```

If you want to add a text shadow in that color use the text-shadow property, you can generate a text shadow directly with our [CSS Text Shadow Generator](#).

Here you see how black text with a 4 pixel rgb(196, 154, 137) colored shadow looks like.

```
.shadow{ text-shadow: 4px 4px 2px rgb(196, 154, 137) }
```

Border

The CSS property to change the border of an element to CIELCh 67, 19.907, 48.479 is called "border". The border property can be set on classes, ids or directly on the HTML element.

This example shows the color as border, it can be applied via the CSS property "border" or "border-color".

```
.border, #border, table{ border:4px solid rgb(196, 154, 137) }
```

If only the border color should be changed use the property `border-color`.

```
.border{ border-color:rgb(196, 154, 137) }
```

If you want to add a box shadow in that color use:

Here you see how a box with a 4 pixel `rgb(196, 154, 137)` colored shadow looks like.

```
.boxshadow{ -moz-box-shadow:4px 4px 4px  
4px rgb(196, 154, 137); -webkit-box-  
shadow:4px 4px 4px 4px rgb(196, 154, 137);  
box-shadow:4px 4px 4px 4px rgb(196, 154,  
137) }
```

Background

The CSS property to change the background color of an element to CIELCh 67, 19.907, 48.479 is called "background". The background property can be set on classes, ids or directly on the HTML element.

```
.background, #background, body{  
background: rgb(196, 154, 137) }
```

If only the background color should be changed can be used:

```
.background{ background-color: rgb(196,  
154, 137) }
```

This example shows the color as background, it is applied via the CSS property "background".

To optimize and compress your CSS code, you can use our [online CSS compressor and optimizer](#) based on csstidy. If you want to create a linear or radial gradient as background or border, check our [CSS Gradient Generator](#).

Hey! You found this booklet interesting? Support Converting Colors with the new Membership Option!

The pro membership hides all ads, plus gives you double the colors in the color bucket, and more awesome pro features!

[Learn more, Memberships starting at \\$2.50/m!](#)

**Follow me
on Twitter!**

@ConvertingColor