

Converting Colors

CIELCh(67, 20.108, 55.981)

Have a look what the booklet for
CIELCh(67, 20.108, 55.981) contains.

CIELCh(67, 20.103, 55.252)	3
<i>Conversions</i>	4
<i>Details</i>	6
<i>Harmonies</i>	11
<i>Previews</i>	20
<i>Color Blindness Simulation</i>	23
<i>CSS Examples</i>	26

Color

CIELCh(67, 20.103, 55.252)

Conversions

Conversions Part 1

Format	Color
Hex	C29B86
RGB	194, 155, 134
RGB Percent	76%, 61%, 53%
CMY	0.2392, 0.3921, 0.4745
CMYK	0.00, 0.20, 0.31, 0.24
HSL	21°, 33%, 64%
HSV	21°, 31%, 76%
XYZ	38.2712, 36.6320, 27.6072
YIQ	164.2670, 29.9850, 1.7370

Conversions

Conversions Part 2

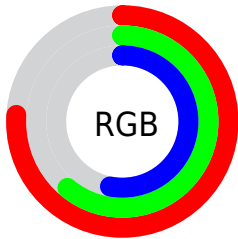
Format	Color
RYB	194, 166, 134
Decimal	12753798
CIELab	67.00, 11.46, 16.52
CIELCh	67, 20.103, 55.252
Yxy	36.6320, 0.3733, 0.3573
Android (android.graphics.Color)	4290943878 (0xFFC29B86)
YUV	164.2670, -14.9216, 26.0758
Hunter-Lab	60.5244, 6.9529, 15.3229

Details

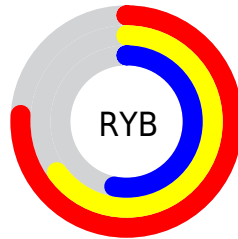
The CIELCh color $67, 20.103, 55.252$ is a light color, and the websafe version is hex `CC9999`. A complement of this color would be $69, 17.050, 241.535$, and the grayscale version is $68, 0.008, 296.813$.

A 20% lighter version of the original color is $87, 20.071, 54.913$, and $47, 20.113, 56.186$ is the 20% darker color. If you saturate the color by 10%, you get $63, 27.580, 54.573$, and if you desaturate by 10%, it is $71, 13.125, 56.007$.

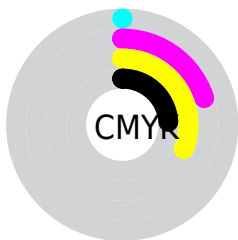
Distribution



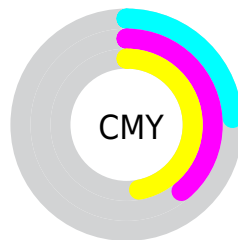
- Red (76%)
- Green (61%)
- Blue (53%)



- Red (76%)
- Yellow (65%)
- Blue (53%)



- Cyan (0%)
- Magenta (20%)
- Yellow (31%)
- Black (24%)



- Cyan (24%)
- Magenta (39%)
- Yellow (47%)

Brightness & Saturation Gradients

These gradients show how the CIELCh color 67, 20.103, 55.252 changes by changing the brightness by 10 percent. The first figure shows a shift by +10% for each color and the second figure -10%.

Similar to the brightness gradients but the following saturation gradients show a change of the CIELCh color 67, 20.103, 55.252 by changing the saturation by 10% instead.

67, 20.103, 55.252

67, 20.103, 55.252

100, 20.103,
55.252

57, 20.103, 55.252

87, 20.103, 55.252

47, 20.103, 55.252

97, 20.103, 55.252

37, 20.103, 55.252

27, 20.103, 55.252

17, 20.103, 55.252

7, 20.103, 55.252

0, 20.103, 55.252

67, 20.103, 55.252

67, 20.103, 55.252

63, 27.580, 54.573

71, 13.125, 56.007

60, 35.562, 53.961

74, 6.617, 56.782

57, 44.001, 53.421

78, 0.539, 56.830

54, 52.741, 52.911

82, 5.156, 238.649

51, 61.406, 52.299

86, 10.510,
239.472

48, 69.195, 51.276

90, 15.564,
240.322

46, 74.981, 49.934

93, 16.977,
219.508

96, 19.914,
198.193

Harmonies

Complementary

The Complementary color scheme is a pair of colors which are on the opposite of each other on the color wheel.



67, 20.103, 55.252



69, 17.050, 241.535

Rectangle

The Rectangle color scheme consists of four colors that form a rectangle on the color wheel.



67, 20.103, 55.252



67, 20.103, 105.252



67, 20.103, 235.252



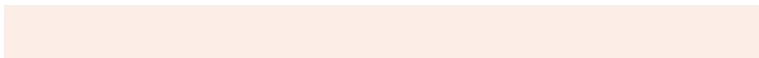
67, 20.103, 285.252

Sweetspot

The Sweet Spot groups the original color and five complimentary colors.



67, 20.102, 55.260



95, 6.708, 56.916



63, 31.139, 338.757



50, 4.724, 56.805



0, 0.000, 0.000



53, 0.007, 296.813

Same Dimension

The Same Dimension uses a secret algorithm to generate beautiful new colors.



67, 20.102, 55.260



82, 30.509, 54.794



75, 27.484, 99.818



39, 3.412, 56.899



39, 64.876, 50.452



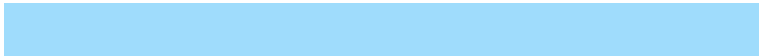
5, 11.688, 43.153

Inverse Universe

The Inverse Universe completely reimagines the original color for something new.



69, 17.050, 241.535



85, 24.828, 242.713



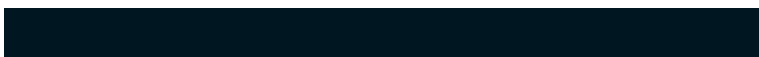
60, 28.838, 287.468



39, 3.266, 238.742



42, 37.564, 264.256



6, 10.979, 252.795

Previews

White Background



This preview shows how the CIELCh color 67, 20.103, 55.252 looks on a white background.

Color Contrast Check

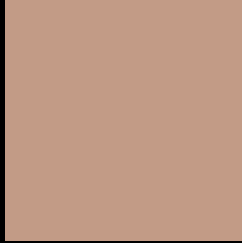
Large Text (above 18pt) WCAG AA × Fail

Any Text WCAG AA × Fail

Large Text (above 18pt) WCAG AAA × Fail

Any Text WCAG AAA × Fail

Black Background



This preview shows how the CIELCh color 67, 20.103, 55.252 looks on a black background.

Color Contrast Check

Large Text (above 18pt) WCAG AA ✓ Pass

Any Text WCAG AA ✓ Pass

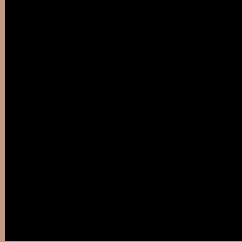
Large Text (above 18pt) WCAG AAA ✓ Pass

Any Text WCAG AAA ✓ Pass

If you want to check with other color combinations, try the [Color Contrast Checker](#).

CIELCh 67, 20.103, 55.252

Background



This preview shows how black text looks on a background with the CIELCh color 67, 20.103, 55.252.



This preview shows how white text looks on a background with the CIELCh color 67, 20.103, 55.252.

Color Blindness Simulation

Color vision deficiency is a very complex topic, and I could not describe the different causes any better than Wikipedia does, so if you want to learn more, you should check out their [article about color blindness](#).

Dichromacy



Original Color

67, 20.103, 55.252

Protanopia

67, 14.204, 93.862

Deuteranopia

67, 18.478, 63.004



Tritanopia
67, 19.072, 1.169

Trichromacy



Original Color
67, 20.103, 55.252

Protanomaly
67, 15.117, 76.082

Deuteranomaly
67, 19.077, 59.348

Tritanomaly
67, 17.613, 21.059

Monochromacy



Original Color
67, 20.103, 55.252

Achromatopsia
67, 0.008, 296.813

Achromatomaly
67, 7.045, 58.280

CSS Examples

Text

The CSS property to change the color of the text to CIELCh 67, 20.103, 55.252 is called "color". The color property can be set on classes, ids or directly on the HTML element.

This example shows how text in the color `rgb(194, 155, 134)` looks like.

```
.text, #text, p{  
    color:rgb(194, 155, 134)  
}
```

If you want to add a text shadow in that color use the text-shadow property, you can generate a text shadow directly with our [CSS Text Shadow Generator](#).

Here you see how black text with a 4 pixel rgb(194, 155, 134) colored shadow looks like.

```
.shadow{ text-shadow: 4px 4px 2px rgb(194, 155, 134) }
```

Border

The CSS property to change the border of an element to CIELCh 67, 20.103, 55.252 is called "border". The border property can be set on classes, ids or directly on the HTML element.

This example shows the color as border, it can be applied via the CSS property "border" or "border-color".

```
.border, #border, table{ border:4px solid rgb(194, 155, 134) }
```

If only the border color should be changed use the property `border-color`.

```
.border{ border-color:rgb(194, 155, 134) }
```

If you want to add a box shadow in that color use:

Here you see how a box with a 4 pixel `rgb(194, 155, 134)` colored shadow looks like.

```
.boxshadow{ -moz-box-shadow:4px 4px 4px  
4px rgb(194, 155, 134); -webkit-box-  
shadow:4px 4px 4px 4px rgb(194, 155, 134);  
box-shadow:4px 4px 4px 4px rgb(194, 155,  
134) }
```

Background

The CSS property to change the background color of an element to CIELCh 67, 20.103, 55.252 is called "background". The background property can be set on classes, ids or directly on the HTML element.

```
.background, #background, body{  
background: rgb(194, 155, 134) }
```

If only the background color should be changed can be used:

```
.background{ background-color: rgb(194,  
155, 134) }
```

This example shows the color as background, it is applied via the CSS property "background".

To optimize and compress your CSS code, you can use our [online CSS compressor and optimizer](#) based on csstidy. If you want to create a linear or radial gradient as background or border, check our [CSS Gradient Generator](#).

Hey! You found this booklet interesting? Support Converting Colors with the new Membership Option!

The pro membership hides all ads, plus gives you double the colors in the color bucket, and more awesome pro features!

[Learn more, Memberships starting at \\$2.50/m!](#)

**Follow me
on Twitter!**

@ConvertingColor