

Converting Colors

CIELCh(67, 20.539, 54.766)

Have a look what the booklet for
CIELCh(67, 20.539, 54.766) contains.

CIELCh(67, 20.456, 54.590)	3
<i>Conversions</i>	4
<i>Details</i>	6
<i>Harmonies</i>	11
<i>Previews</i>	20
<i>Color Blindness Simulation</i>	23
<i>CSS Examples</i>	26

Color

CIELCh(67, 20.456, 54.590)

Conversions

Conversions Part 1

Format	Color
Hex	C39B86
RGB	195, 155, 134
RGB Percent	76%, 61%, 53%
CMY	0.2364, 0.3932, 0.4755
CMYK	0.00, 0.21, 0.31, 0.24
HSL	21°, 34%, 64%
HSV	21°, 31%, 76%
XYZ	38.3941, 36.6320, 27.5064
YIQ	164.5660, 30.5810, 1.9490

Conversions

Conversions Part 2

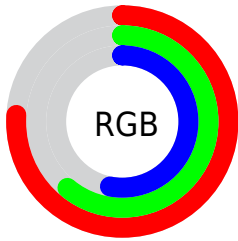
Format	Color
R _Y B	195, 166, 134
Decimal	12819334
CIE Lab	67.00, 11.85, 16.67
CIE LCh	67, 20.456, 54.590
Yxy	36.6320, 0.3745, 0.3573
Android (android.graphics.Color)	4291009414 (0xFFC39B86)
YUV	164.5660, -15.0690, 26.6906
Hunter-Lab	60.5244, 7.3152, 15.4216

Details

The CIELCh color **67, 20.456, 54.590** is a light color, and the websafe version is hex **CC9999**. A complement of this color would be **69, 17.261, 240.820**, and the grayscale version is **68, 0.008, 296.813**.

A 20% lighter version of the original color is **87, 20.401, 54.293**, and **47, 20.497, 55.457** is the 20% darker color. If you saturate the color by 10%, you get **63, 27.990, 53.944**, and if you desaturate by 10%, it is **71, 13.429, 55.316**.

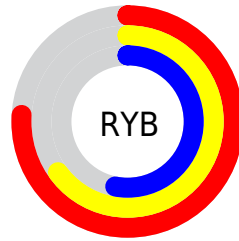
Distribution



Red (76%)

Green (61%)

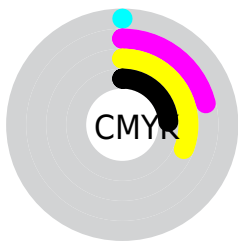
Blue (53%)



Red (76%)

Yellow (65%)

Blue (53%)

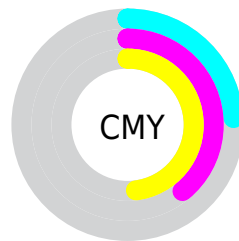


Cyan (0%)

Magenta (21%)

Yellow (31%)

Black (24%)



Cyan (24%)

Magenta (39%)

Yellow (48%)

Brightness & Saturation Gradients

These gradients show how the CIELCh color 67, 20.456, 54.590 changes by changing the brightness by 10 percent. The first figure shows a shift by +10% for each color and the second figure -10%.

Similar to the brightness gradients but the following saturation gradients show a change of the CIELCh color 67, 20.456, 54.590 by changing the saturation by 10% instead.

67, 20.456, 54.590

67, 20.456, 54.590

100, 20.456,
54.590

57, 20.456, 54.590

87, 20.456, 54.590

47, 20.456, 54.590

97, 20.456, 54.590

37, 20.456, 54.590

27, 20.456, 54.590

17, 20.456, 54.590

7, 20.456, 54.590

0, 20.456, 54.590

67, 20.456, 54.590

67, 20.456, 54.590

63, 27.990, 53.944

71, 13.429, 55.316

60, 36.036, 53.370

74, 6.880, 56.067

57, 44.543, 52.873

78, 0.769, 56.344

54, 53.350, 52.407

82, 4.952, 237.895

51, 62.068, 51.838

86, 10.325,
238.697

48, 69.870, 50.845

90, 15.393,
239.531

46, 75.434, 49.602

93, 16.897,
218.014

96, 19.699,
198.206

Harmonies

Complementary

The Complementary color scheme is a pair of colors which are on the opposite of each other on the color wheel.



67, 20.456, 54.590



69, 17.261, 240.820

Rectangle

The Rectangle color scheme consists of four colors that form a rectangle on the color wheel.



67, 20.456, 54.590



67, 20.456, 104.590



67, 20.456, 234.590



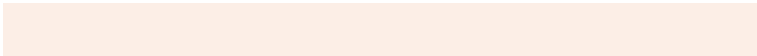
67, 20.456, 284.590

Sweetspot

The Sweet Spot groups the original color and five complimentary colors.



67, 20.455, 54.597



95, 6.706, 56.226



63, 31.978, 338.025



50, 4.723, 56.118



0, 0.000, 0.000



53, 0.007, 296.813

Same Dimension

The Same Dimension uses a secret algorithm to generate beautiful new colors.



67, 20.455, 54.597



82, 31.473, 54.114



75, 27.470, 98.802



39, 3.411, 56.210



38, 65.079, 50.124



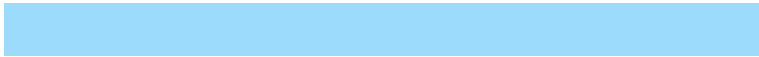
5, 11.709, 42.666

Inverse Universe

The Inverse Universe completely reimagines the original color for something new.



69, 17.261, 240.820



85, 25.359, 242.108



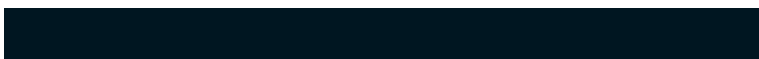
61, 28.734, 286.674



39, 3.262, 238.015



42, 37.173, 263.320



6, 10.925, 251.981

Previews

White Background



This preview shows how the CIELCh color 67, 20.456, 54.590 looks on a white background.

Color Contrast Check

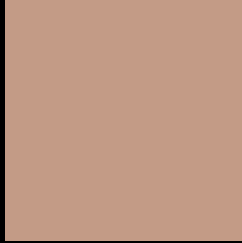
Large Text (above 18pt) WCAG AA × Fail

Any Text WCAG AA × Fail

Large Text (above 18pt) WCAG AAA × Fail

Any Text WCAG AAA × Fail

Black Background



This preview shows how the CIELCh color 67, 20.456, 54.590 looks on a black background.

Color Contrast Check

Large Text (above 18pt) WCAG AA ✓ Pass

Any Text WCAG AA ✓ Pass

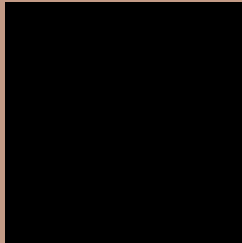
Large Text (above 18pt) WCAG AAA ✓ Pass

Any Text WCAG AAA ✓ Pass

If you want to check with other color combinations, try the [Color Contrast Checker](#).

CIELCh 67, 20.456, 54.590

Background



This preview shows how black text looks on a background with the CIELCh color 67, 20.456, 54.590.



This preview shows how white text looks on a background with the CIELCh color 67, 20.456, 54.590.

Color Blindness Simulation

Color vision deficiency is a very complex topic, and I could not describe the different causes any better than Wikipedia does, so if you want to learn more, you should check out their [article about color blindness](#).

Dichromacy



Original Color

67, 20.456, 54.590

Protanopia

67, 14.204, 93.862

Deuteranopia

67, 18.887, 64.096



Tritanopia
67, 19.308, 3.181

Trichromacy



Original Color
67, 20.456, 54.590

Protanomaly
67, 15.592, 77.068

Deuteranomaly
67, 19.463, 60.479

Tritanomaly
67, 18.024, 21.100

Monochromacy



Original Color
67, 20.456, 54.590

Achromatopsia
67, 0.008, 296.813

Achromatomaly
67, 7.045, 58.280

CSS Examples

Text

The CSS property to change the color of the text to CIELCh 67, 20.456, 54.590 is called "color". The color property can be set on classes, ids or directly on the HTML element.

This example shows how text in the color `rgb(195, 155, 134)` looks like.

```
.text, #text, p{  
    color:rgb(195, 155, 134)  
}
```

If you want to add a text shadow in that color use the text-shadow property, you can generate a text shadow directly with our [CSS Text Shadow Generator](#).

Here you see how black text with a 4 pixel rgb(195, 155, 134) colored shadow looks like.

```
.shadow{ text-shadow: 4px 4px 2px rgb(195, 155, 134) }
```

Border

The CSS property to change the border of an element to CIELCh 67, 20.456, 54.590 is called "border". The border property can be set on classes, ids or directly on the HTML element.

This example shows the color as border, it can be applied via the CSS property "border" or "border-color".

```
.border, #border, table{ border:4px solid rgb(195, 155, 134) }
```

If only the border color should be changed use the property `border-color`.

```
.border{ border-color:rgb(195, 155, 134) }
```

If you want to add a box shadow in that color use:

Here you see how a box with a 4 pixel `rgb(195, 155, 134)` colored shadow looks like.

```
.boxshadow{ -moz-box-shadow:4px 4px 4px  
4px rgb(195, 155, 134); -webkit-box-  
shadow:4px 4px 4px 4px rgb(195, 155, 134);  
box-shadow:4px 4px 4px 4px rgb(195, 155,  
134) }
```

Background

The CSS property to change the background color of an element to CIELCh 67, 20.456, 54.590 is called "background". The background property can be set on classes, ids or directly on the HTML element.

```
.background, #background, body{  
background: rgb(195, 155, 134) }
```

If only the background color should be changed can be used:

```
.background{ background-color: rgb(195,  
155, 134) }
```

This example shows the color as background, it is applied via the CSS property "background".

To optimize and compress your CSS code, you can use our [online CSS compressor and optimizer](#) based on csstidy. If you want to create a linear or radial gradient as background or border, check our [CSS Gradient Generator](#).

Hey! You found this booklet interesting? Support Converting Colors with the new Membership Option!

The pro membership hides all ads, plus gives you double the colors in the color bucket, and more awesome pro features!

[Learn more, Memberships starting at \\$2.50/m!](#)

**Follow me
on Twitter!**

@ConvertingColor