

Converting Colors

CIELCh(67, 23.608, 7.102)

Have a look what the booklet for
CIELCh(67, 23.608, 7.102) contains.

CIELCh(67, 23.608, 7.102)	3
<i>Conversions</i>	4
<i>Details</i>	6
<i>Harmonies</i>	11
<i>Previews</i>	20
<i>Color Blindness Simulation</i>	23
<i>CSS Examples</i>	26

Color

CIELCh(67, 23.608, 7.102)

Conversions

Conversions Part 1

Format	Color
Hex	CE949F
RGB	206, 148, 159
RGB Percent	81%, 58%, 62%
CMY	0.1936, 0.4209, 0.3778
CMYK	0.00, 0.28, 0.23, 0.19
HSL	349°, 37%, 69%
HSV	349°, 28%, 81%
XYZ	42.1151, 36.6320, 37.4948
YIQ	166.5960, 31.0370, 15.7170

Conversions

Conversions Part 2

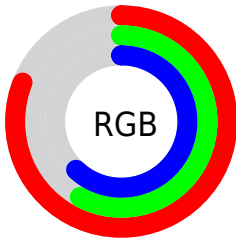
Format	Color
R _Y B	206, 148, 159
Decimal	13538463
CIE Lab	67.00, 23.43, 2.92
CIE LCh	67, 23.608, 7.102
Yxy	36.6320, 0.3623, 0.3151
Android (android.graphics.Color)	4291728543 (0xFFCE949F)
YUV	166.5960, -3.7448, 34.5573
Hunter-Lab	60.5244, 18.2892, 5.6369

Details

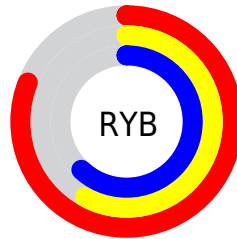
The CIELCh color $67, 23.608, 7.102$ is a light color, and the websafe version is hex `CC9999`. A complement of this color would be $79, 20.931, 181.476$, and the grayscale version is $68, 0.008, 296.813$.

A 20% lighter version of the original color is $86, 20.592, 3.412$, and $47, 23.668, 7.062$ is the 20% darker color. If you saturate the color by 10%, you get $62, 32.627, 8.658$, and if you desaturate by 10%, it is $72, 14.869, 5.823$.

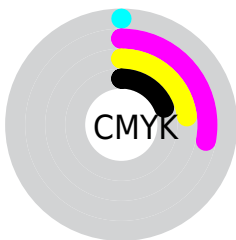
Distribution



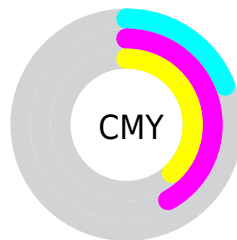
- Red (81%)
- Green (58%)
- Blue (62%)



- Red (81%)
- Yellow (58%)
- Blue (62%)



- Cyan (0%)
- Magenta (28%)
- Yellow (23%)
- Black (19%)



- Cyan (19%)
- Magenta (42%)
- Yellow (38%)

Brightness & Saturation Gradients

These gradients show how the CIELCh color 67, 23.608, 7.102 changes by changing the brightness by 10 percent. The first figure shows a shift by +10% for each color and the second figure -10%.

Similar to the brightness gradients but the following saturation gradients show a change of the CIELCh color 67, 23.608, 7.102 by changing the saturation by 10% instead.

67, 23.608, 7.102

67, 23.608, 7.102

100, 23.608, 7.102

57, 23.608, 7.102

87, 23.608, 7.102

47, 23.608, 7.102

97, 23.608, 7.102

37, 23.608, 7.102

27, 23.608, 7.102

17, 23.608, 7.102

7, 23.608, 7.102

0, 23.608, 7.102

67, 23.608, 7.102

67, 23.608, 7.102

62, 32.627, 8.658

72, 14.869, 5.823

■ 57, 41.747, 10.579

■ 78, 6.521, 4.715

■ 53, 50.686, 12.995

■ 84, 1.395, 184.267

■ 49, 59.101, 16.055

■ 89, 8.874, 183.168

■ 46, 66.667, 19.899

■ 95, 15.934,
182.457

■ 44, 73.213, 24.565

■ 97, 16.366,
198.418

■ 43, 78.850, 29.762

■ 43, 79.864, 30.642

Harmonies

Complementary

The Complementary color scheme is a pair of colors which are on the opposite of each other on the color wheel.



67, 23.608, 7.102



79, 20.931, 181.476

Rectangle

The Rectangle color scheme consists of four colors that form a rectangle on the color wheel.



67, 23.608, 7.102



67, 23.608, 57.102



67, 23.608, 187.102



67, 23.608, 237.102

Sweetspot

The Sweet Spot groups the original color and five complimentary colors.



67, 23.606, 7.106



95, 7.581, 4.706



67, 35.947, 320.056



50, 5.410, 4.869



0, 0.000, 0.000



53, 0.007, 296.813

Same Dimension

The Same Dimension uses a secret algorithm to generate beautiful new colors.



67, 23.606, 7.106



78, 34.349, 8.036



71, 19.184, 49.861



40, 4.501, 4.844



34, 67.484, 29.739



4, 18.186, 10.149

Inverse Universe

The Inverse Universe completely reimagines the original color for something new.



67, 23.606, 7.106



78, 34.349, 8.036



74, 16.212, 234.286



40, 4.501, 4.844



34, 67.484, 29.739



4, 18.186, 10.149

Previews

White Background



This preview shows how the CIELCh color 67, 23.608, 7.102 looks on a white background.

Color Contrast Check

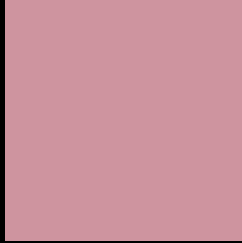
Large Text (above 18pt) WCAG AA × Fail

Any Text WCAG AA × Fail

Large Text (above 18pt) WCAG AAA × Fail

Any Text WCAG AAA × Fail

Black Background



This preview shows how the CIELCh color 67, 23.608, 7.102 looks on a black background.

Color Contrast Check

Large Text (above 18pt) WCAG AA ✓ Pass

Any Text WCAG AA ✓ Pass

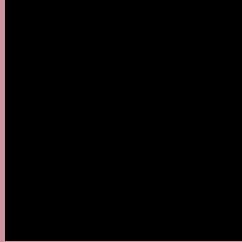
Large Text (above 18pt) WCAG AAA ✓ Pass

Any Text WCAG AAA ✓ Pass

If you want to check with other color combinations, try the [Color Contrast Checker](#).

CIELCh 67, 23.608, 7.102

Background



This preview shows how black text looks on a background with the CIELCh color 67, 23.608, 7.102.



This preview shows how white text looks on a background with the CIELCh color 67, 23.608, 7.102.

Color Blindness Simulation

Color vision deficiency is a very complex topic, and I could not describe the different causes any better than Wikipedia does, so if you want to learn more, you should check out their [article about color blindness](#).

Dichromacy



Original Color

67, 23.608, 7.102

Protanopia

67, 2.349, 309.127

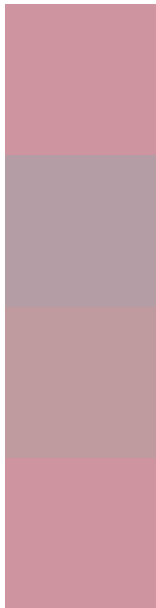
Deuteranopia

67, 9.431, 23.543



Tritanopia
67, 23.608, 7.102

Trichromacy



Original Color
67, 23.608, 7.102

Protanomaly
67, 9.675, 356.841

Deuteranomaly
67, 14.718, 12.251

Tritanomaly
67, 23.608, 7.102

Monochromacy



Original Color
67, 23.608, 7.102

Achromatopsia
68, 0.008, 296.813

Achromatomaly
67, 8.412, 5.016

CSS Examples

Text

The CSS property to change the color of the text to CIELCh 67, 23.608, 7.102 is called "color". The color property can be set on classes, ids or directly on the HTML element.

This example shows how text in the color `rgb(206, 148, 159)` looks like.

```
.text, #text, p{  
    color:rgb(206, 148, 159)  
}
```

If you want to add a text shadow in that color use the text-shadow property, you can generate a text shadow directly with our [CSS Text Shadow Generator](#).

Here you see how black text with a 4 pixel rgb(206, 148, 159) colored shadow looks like.

```
.shadow{ text-shadow: 4px 4px 2px rgb(206, 148, 159) }
```

Border

The CSS property to change the border of an element to CIELCh 67, 23.608, 7.102 is called "border". The border property can be set on classes, ids or directly on the HTML element.

This example shows the color as border, it can be applied via the CSS property "border" or "border-color".

```
.border, #border, table{ border:4px solid rgb(206, 148, 159) }
```

If only the border color should be changed use the property `border-color`.

```
.border{ border-color:rgb(206, 148, 159) }
```

If you want to add a box shadow in that color use:

Here you see how a box with a 4 pixel `rgb(206, 148, 159)` colored shadow looks like.

```
.boxshadow{ -moz-box-shadow:4px 4px 4px  
4px rgb(206, 148, 159); -webkit-box-  
shadow:4px 4px 4px 4px rgb(206, 148, 159);  
box-shadow:4px 4px 4px 4px rgb(206, 148,  
159) }
```

Background

The CSS property to change the background color of an element to CIELCh 67, 23.608, 7.102 is called "background". The background property can be set on classes, ids or directly on the HTML element.

```
.background, #background, body{  
background: rgb(206, 148, 159) }
```

If only the background color should be changed can be used:

```
.background{ background-color: rgb(206,  
148, 159) }
```

This example shows the color as background, it is applied via the CSS property "background".

To optimize and compress your CSS code, you can use our [online CSS compressor and optimizer](#) based on csstidy. If you want to create a linear or radial gradient as background or border, check our [CSS Gradient Generator](#).

Hey! You found this booklet interesting? Support Converting Colors with the new Membership Option!

The pro membership hides all ads, plus gives you double the colors in the color bucket, and more awesome pro features!

[Learn more, Memberships starting at \\$2.50/m!](#)

**Follow me
on Twitter!**

@ConvertingColor