

Converting Colors

CIELCh(67, 23.819, 41.293)

Have a look what the booklet for
CIELCh(67, 23.819, 41.293) contains.

CIELCh(67, 23.756, 41.321)	3
<i>Conversions</i>	4
<i>Details</i>	6
<i>Harmonies</i>	11
<i>Previews</i>	20
<i>Color Blindness Simulation</i>	23
<i>CSS Examples</i>	26

Color

CIELCh(67, 23.756, 41.321)

Conversions

Conversions Part 1

Format	Color
Hex	CC9788
RGB	204, 151, 136
RGB Percent	80%, 59%, 53%
CMY	0.2010, 0.4087, 0.4675
CMYK	0.00, 0.26, 0.33, 0.20
HSL	13°, 40%, 67%
HSV	13°, 33%, 80%
XYZ	40.2907, 36.6320, 28.1554
YIQ	165.1370, 36.4030, 6.5710

Conversions

Conversions Part 2

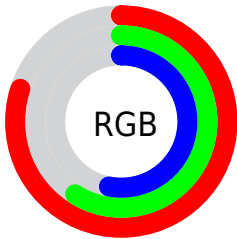
Format	Color
R _Y B	204, 155, 136
Decimal	13408136
CIE Lab	67.00, 17.84, 15.69
CIE LCh	67, 23.756, 41.321
Yxy	36.6320, 0.3834, 0.3486
Android (android.graphics.Color)	4291598216 (0xFFCC9788)
YUV	165.1370, -14.3645, 34.0829
Hunter-Lab	60.5244, 12.9088, 14.7859

Details

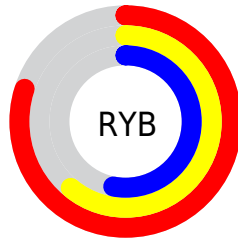
The CIELCh color **67, 23.756, 41.321** is a light color, and the websafe version is hex **CC9999**. A complement of this color would be **73, 18.882, 223.931**, and the grayscale version is **68, 0.008, 296.813**.

A 20% lighter version of the original color is **86, 21.237, 43.640**, and **47, 23.647, 41.911** is the 20% darker color. If you saturate the color by 10%, you get **63, 32.172, 41.466**, and if you desaturate by 10%, it is **71, 15.959, 41.346**.

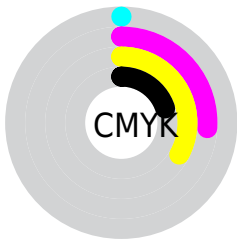
Distribution



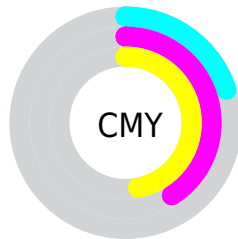
- Red (80%)
- Green (59%)
- Blue (53%)



- Red (80%)
- Yellow (61%)
- Blue (53%)



- Cyan (0%)
- Magenta (26%)
- Yellow (33%)
- Black (20%)



- Cyan (20%)
- Magenta (41%)
- Yellow (47%)

Brightness & Saturation Gradients

These gradients show how the CIELCh color 67, 23.756, 41.321 changes by changing the brightness by 10 percent. The first figure shows a shift by +10% for each color and the second figure -10%.

Similar to the brightness gradients but the following saturation gradients show a change of the CIELCh color 67, 23.756, 41.321 by changing the saturation by 10% instead.

67, 23.756, 41.321

67, 23.756, 41.321

100, 23.756,
41.321

57, 23.756, 41.321

87, 23.756, 41.321

47, 23.756, 41.321

97, 23.756, 41.321

37, 23.756, 41.321

27, 23.756, 41.321

17, 23.756, 41.321

7, 23.756, 41.321

0, 23.756, 41.321

67, 23.756, 41.321

67, 23.756, 41.321

63, 32.172, 41.466

71, 15.959, 41.346

■ 59, 41.198, 41.796

■ 76, 8.761, 41.477

■ 55, 50.750, 42.334

■ 80, 2.116, 41.540

■ 52, 60.615, 43.044

■ 85, 4.027, 222.263

■ 49, 70.295, 43.760

■ 90, 9.724, 222.567

■ 46, 78.697, 44.027

■ 94, 14.585,
217.105

■ 45, 83.242, 43.999

■ 97, 16.949,
198.381

Harmonies

Complementary

The Complementary color scheme is a pair of colors which are on the opposite of each other on the color wheel.



67, 23.756, 41.321



73, 18.882, 223.931

Rectangle

The Rectangle color scheme consists of four colors that form a rectangle on the color wheel.



67, 23.756, 41.321



67, 23.756, 91.321



67, 23.756, 221.321



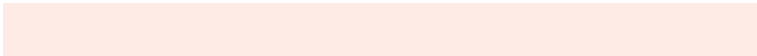
67, 23.756, 271.321

Sweetspot

The Sweet Spot groups the original color and five complimentary colors.



67, 23.755, 41.327



94, 7.763, 41.530



65, 38.244, 333.310



50, 5.327, 41.507



0, 0.000, 0.000



53, 0.007, 296.813

Same Dimension

The Same Dimension uses a secret algorithm to generate beautiful new colors.



67, 23.755, 41.327



79, 35.195, 41.408



75, 27.271, 90.739



41, 3.663, 41.541



37, 71.036, 44.390



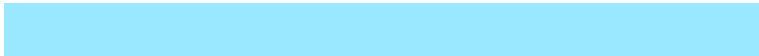
5, 15.848, 31.868

Inverse Universe

The Inverse Universe completely reimagines the original color for something new.



73, 18.882, 223.931



88, 26.384, 224.698



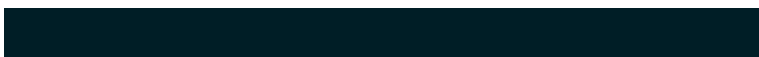
64, 27.621, 280.047



42, 3.460, 222.351



50, 32.197, 239.660



9, 11.740, 229.865

Previews

White Background



This preview shows how the CIELCh color 67, 23.756, 41.321 looks on a white background.

Color Contrast Check

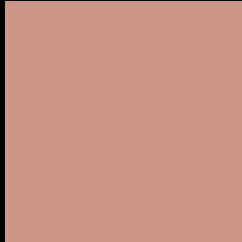
Large Text (above 18pt) WCAG AA × Fail

Any Text WCAG AA × Fail

Large Text (above 18pt) WCAG AAA × Fail

Any Text WCAG AAA × Fail

Black Background



This preview shows how the CIE LCh color 67, 23.756, 41.321 looks on a black background.

Color Contrast Check

Large Text (above 18pt) WCAG AA ✓ Pass

Any Text WCAG AA ✓ Pass

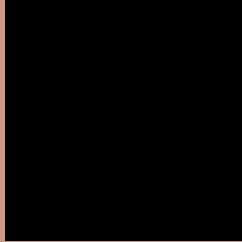
Large Text (above 18pt) WCAG AAA ✓ Pass

Any Text WCAG AAA ✓ Pass

If you want to check with other color combinations, try the [Color Contrast Checker](#).

CIELCh 67, 23.756, 41.321

Background



This preview shows how black text looks on a background with the CIELCh color 67, 23.756, 41.321.

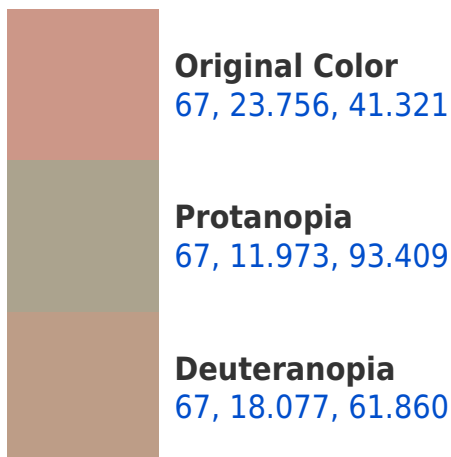


This preview shows how white text looks on a background with the CIELCh color 67, 23.756, 41.321.

Color Blindness Simulation

Color vision deficiency is a very complex topic, and I could not describe the different causes any better than Wikipedia does, so if you want to learn more, you should check out their [article about color blindness](#).

Dichromacy





Tritanopia
67, 24.111, 6.135

Trichromacy



Original Color
67, 23.756, 41.321

Protanomaly
67, 14.382, 66.233

Deuteranomaly
67, 19.752, 54.065

Tritanomaly
67, 22.966, 17.594

Monochromacy



Original Color
67, 23.756, 41.321

Achromatopsia
68, 0.008, 296.813

Achromatomaly
67, 8.184, 43.652

CSS Examples

Text

The CSS property to change the color of the text to CIELCh 67, 23.756, 41.321 is called "color". The color property can be set on classes, ids or directly on the HTML element.

This example shows how text in the color `rgb(204, 151, 136)` looks like.

```
.text, #text, p{  
    color:rgb(204, 151, 136)  
}
```

If you want to add a text shadow in that color use the text-shadow property, you can generate a text shadow directly with our [CSS Text Shadow Generator](#).

Here you see how black text with a 4 pixel rgb(204, 151, 136) colored shadow looks like.

```
.shadow{ text-shadow: 4px 4px 2px rgb(204, 151, 136) }
```

Border

The CSS property to change the border of an element to CIELCh 67, 23.756, 41.321 is called "border". The border property can be set on classes, ids or directly on the HTML element.

This example shows the color as border, it can be applied via the CSS property "border" or "border-color".

```
.border, #border, table{ border:4px solid rgb(204, 151, 136) }
```

If only the border color should be changed use the property `border-color`.

```
.border{ border-color:rgb(204, 151, 136) }
```

If you want to add a box shadow in that color use:

Here you see how a box with a 4 pixel `rgb(204, 151, 136)` colored shadow looks like.

```
.boxshadow{ -moz-box-shadow:4px 4px 4px  
4px rgb(204, 151, 136); -webkit-box-  
shadow:4px 4px 4px 4px rgb(204, 151, 136);  
box-shadow:4px 4px 4px 4px rgb(204, 151,  
136) }
```

Background

The CSS property to change the background color of an element to CIELCh 67, 23.756, 41.321 is called "background". The background property can be set on classes, ids or directly on the HTML element.

```
.background, #background, body{  
background: rgb(204, 151, 136) }
```

If only the background color should be changed can be used:

```
.background{ background-color: rgb(204,  
151, 136) }
```

This example shows the color as background, it is applied via the CSS property "background".

To optimize and compress your CSS code, you can use our [online CSS compressor and optimizer](#) based on csstidy. If you want to create a linear or radial gradient as background or border, check our [CSS Gradient Generator](#).

Hey! You found this booklet interesting? Support Converting Colors with the new Membership Option!

The pro membership hides all ads, plus gives you double the colors in the color bucket, and more awesome pro features!

[Learn more, Memberships starting at \\$2.50/m!](#)

**Follow me
on Twitter!**

@ConvertingColor