

Converting Colors

CIELCh(67, 24.151, 23.914)

Have a look what the booklet for
CIELCh(67, 24.151, 23.914) contains.

CIELCh(67, 24.089, 24.291)	3
<i>Conversions</i>	4
<i>Details</i>	6
<i>Harmonies</i>	11
<i>Previews</i>	20
<i>Color Blindness Simulation</i>	23
<i>CSS Examples</i>	26

Color

CIELCh(67, 24.089, 24.291)

Conversions

Conversions Part 1

Format	Color
Hex	CF9492
RGB	207, 148, 146
RGB Percent	81%, 58%, 57%
CMY	0.1873, 0.4187, 0.4266
CMYK	0.00, 0.28, 0.29, 0.19
HSL	2°, 39%, 69%
HSV	2°, 29%, 81%
XYZ	41.6295, 36.6320, 32.1605
YIQ	165.4130, 35.8060, 11.8860

Conversions

Conversions Part 2

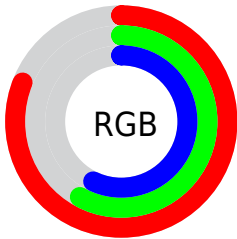
Format	Color
R _Y B	207, 148, 146
Decimal	13603986
CIE Lab	67.00, 21.96, 9.91
CIE LCh	67, 24.089, 24.291
Yxy	36.6320, 0.3770, 0.3317
Android (android.graphics.Color)	4291794066 (0xFFCF9492)
YUV	165.4130, -9.5706, 36.4718
Hunter-Lab	60.5244, 16.8573, 10.8624

Details

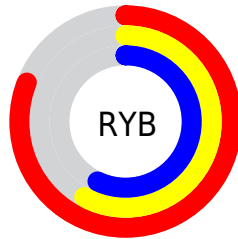
The CIELCh color **67, 24.089, 24.291** is a light color, and the websafe version is hex **CC9999**. A complement of this color would be **79, 19.639, 201.161**, and the grayscale version is **68, 0.008, 296.813**.

A 20% lighter version of the original color is **86, 20.198, 23.857**, and **47, 23.874, 23.923** is the 20% darker color. If you saturate the color by 10%, you get **62, 33.496, 25.501**, and if you desaturate by 10%, it is **72, 15.292, 23.379**.

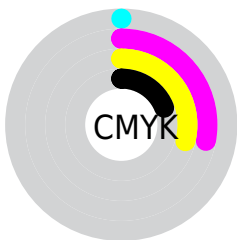
Distribution



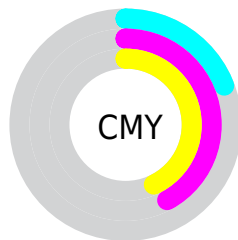
- Red (81%)
- Green (58%)
- Blue (57%)



- Red (81%)
- Yellow (58%)
- Blue (57%)



- Cyan (0%)
- Magenta (28%)
- Yellow (29%)
- Black (19%)



- Cyan (19%)
- Magenta (42%)
- Yellow (43%)

Brightness & Saturation Gradients

These gradients show how the CIELCh color 67, 24.089, 24.291 changes by changing the brightness by 10 percent. The first figure shows a shift by +10% for each color and the second figure -10%.

Similar to the brightness gradients but the following saturation gradients show a change of the CIELCh color 67, 24.089, 24.291 by changing the saturation by 10% instead.

67, 24.089, 24.291

67, 24.089, 24.291

100, 24.089,
24.291

57, 24.089, 24.291

87, 24.089, 24.291

47, 24.089, 24.291

97, 24.089, 24.291

37, 24.089, 24.291

27, 24.089, 24.291

17, 24.089, 24.291

7, 24.089, 24.291

0, 24.089, 24.291

67, 24.089, 24.291

67, 24.089, 24.291

62, 33.496, 25.501

72, 15.292, 23.379

■ 57, 43.428, 27.085

■ 78, 7.135, 22.655

■ 53, 53.700, 29.141

■ 84, 0.403, 203.633

■ 49, 64.026, 31.728

■ 89, 7.366, 201.907

■ 46, 73.957, 34.767

■ 95, 13.810,
201.576

■ 44, 82.631, 37.811

■ 97, 15.865,
198.451

■ 43, 88.686, 40.151

■ 43, 89.003, 40.300

Harmonies

Complementary

The Complementary color scheme is a pair of colors which are on the opposite of each other on the color wheel.



67, 24.089, 24.291



79, 19.639, 201.161

Rectangle

The Rectangle color scheme consists of four colors that form a rectangle on the color wheel.



67, 24.089, 24.291



67, 24.089, 74.291



67, 24.089, 204.291



67, 24.089, 254.291

Sweetspot

The Sweet Spot groups the original color and five complimentary colors.



67, 24.087, 24.296



94, 8.035, 22.632



68, 39.300, 326.493



49, 5.617, 22.732



0, 0.000, 0.000



53, 0.007, 296.813

Same Dimension

The Same Dimension uses a secret algorithm to generate beautiful new colors.



67, 24.087, 24.296



77, 34.658, 24.976



74, 20.932, 73.486



41, 4.317, 22.653



35, 76.003, 40.278



4, 19.617, 21.079

Inverse Universe

The Inverse Universe completely reimagines the original color for something new.



79, 19.639, 201.161



94, 26.950, 201.003



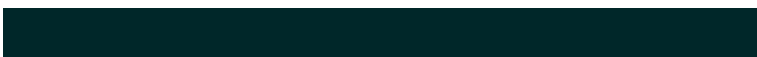
71, 19.466, 261.832



43, 4.066, 201.917



61, 35.098, 201.665



13, 13.533, 200.600

Previews

White Background



This preview shows how the CIELCh color 67, 24.089, 24.291 looks on a white background.

Color Contrast Check

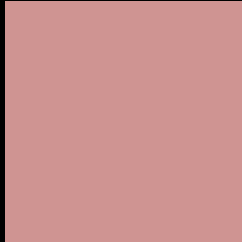
Large Text (above 18pt) WCAG AA × Fail

Any Text WCAG AA × Fail

Large Text (above 18pt) WCAG AAA × Fail

Any Text WCAG AAA × Fail

Black Background



This preview shows how the CIELCh color 67, 24.089, 24.291 looks on a black background.

Color Contrast Check

Large Text (above 18pt) WCAG AA ✓ Pass

Any Text WCAG AA ✓ Pass

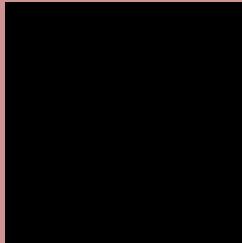
Large Text (above 18pt) WCAG AAA ✓ Pass

Any Text WCAG AAA ✓ Pass

If you want to check with other color combinations, try the [Color Contrast Checker](#).

CIELCh 67, 24.089, 24.291

Background



This preview shows how black text looks on a background with the CIELCh color 67, 24.089, 24.291.



This preview shows how white text looks on a background with the CIELCh color 67, 24.089, 24.291.

Color Blindness Simulation

Color vision deficiency is a very complex topic, and I could not describe the different causes any better than Wikipedia does, so if you want to learn more, you should check out their [article about color blindness](#).

Dichromacy



Original Color

67, 24.089, 24.291

Protanopia

67, 5.461, 84.270

Deuteranopia

67, 13.515, 49.346



Tritanopia
67, 25.303, 7.046

Trichromacy



Original Color
67, 24.089, 24.291

Protanomaly
67, 10.689, 41.207

Deuteranomaly
67, 17.067, 37.507

Tritanomaly
67, 24.622, 13.000

Monochromacy



Original Color
67, 24.089, 24.291

Achromatopsia
68, 0.008, 296.813

Achromatomaly
68, 8.213, 23.907

CSS Examples

Text

The CSS property to change the color of the text to CIELCh 67, 24.089, 24.291 is called "color". The color property can be set on classes, ids or directly on the HTML element.

This example shows how text in the color `rgb(207, 148, 146)` looks like.

```
.text, #text, p{  
    color:rgb(207, 148, 146)  
}
```

If you want to add a text shadow in that color use the text-shadow property, you can generate a text shadow directly with our [CSS Text Shadow Generator](#).

Here you see how black text with a 4 pixel rgb(207, 148, 146) colored shadow looks like.

```
.shadow{ text-shadow: 4px 4px 2px rgb(207, 148, 146) }
```

Border

The CSS property to change the border of an element to CIELCh 67, 24.089, 24.291 is called "border". The border property can be set on classes, ids or directly on the HTML element.

This example shows the color as border, it can be applied via the CSS property "border" or "border-color".

```
.border, #border, table{ border:4px solid rgb(207, 148, 146) }
```

If only the border color should be changed use the property `border-color`.

```
.border{ border-color:rgb(207, 148, 146) }
```

If you want to add a box shadow in that color use:

Here you see how a box with a 4 pixel `rgb(207, 148, 146)` colored shadow looks like.

```
.boxshadow{ -moz-box-shadow:4px 4px 4px  
4px rgb(207, 148, 146); -webkit-box-  
shadow:4px 4px 4px 4px rgb(207, 148, 146);  
box-shadow:4px 4px 4px 4px rgb(207, 148,  
146) }
```

Background

The CSS property to change the background color of an element to CIELCh 67, 24.089, 24.291 is called "background". The background property can be set on classes, ids or directly on the HTML element.

```
.background, #background, body{  
background: rgb(207, 148, 146) }
```

If only the background color should be changed can be used:

```
.background{ background-color: rgb(207,  
148, 146) }
```

This example shows the color as background, it is applied via the CSS property "background".

To optimize and compress your CSS code, you can use our [online CSS compressor and optimizer](#) based on csstidy. If you want to create a linear or radial gradient as background or border, check our [CSS Gradient Generator](#).

Hey! You found this booklet interesting? Support Converting Colors with the new Membership Option!

The pro membership hides all ads, plus gives you double the colors in the color bucket, and more awesome pro features!

[Learn more, Memberships starting at \\$2.50/m!](#)

**Follow me
on Twitter!**

@ConvertingColor