

Converting Colors

CIELCh(67, 25.938, 64.505)

Have a look what the booklet for
CIELCh(67, 25.938, 64.505) contains.

CIELCh(67, 25.806, 64.420)	3
<i>Conversions</i>	4
<i>Details</i>	6
<i>Harmonies</i>	11
<i>Previews</i>	20
<i>Color Blindness Simulation</i>	23
<i>CSS Examples</i>	26

Color

CIELCh(67, 25.806, 64.420)

Conversions

Conversions Part 1

Format	Color
Hex	C59B7A
RGB	197, 155, 122
RGB Percent	77%, 61%, 48%
CMY	0.2282, 0.3928, 0.5222
CMYK	0.00, 0.21, 0.38, 0.23
HSL	26°, 39%, 62%
HSV	26°, 38%, 77%
XYZ	38.1731, 36.6320, 23.4171
YIQ	163.7960, 35.6250, -1.3590

Conversions

Conversions Part 2

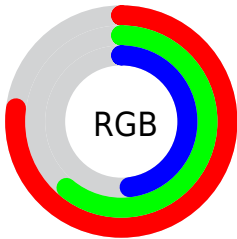
Format	Color
R _Y B	197, 181, 122
Decimal	12950394
CIE Lab	67.00, 11.14, 23.28
CIE LCh	67, 25.806, 64.420
Yxy	36.6320, 0.3886, 0.3730
Android (android.graphics.Color)	4291140474 (0xFFC59B7A)
YUV	163.7960, -20.6054, 29.1199
Hunter-Lab	60.5244, 6.6635, 19.4275

Details

The CIELCh color $67, 25.806, 64.420$ is a light color, and the websafe version is hex $CC9966$. A complement of this color would be $65, 22.220, 254.754$, and the grayscale version is $67, 0.008, 296.813$.

A 20% lighter version of the original color is $87, 25.663, 63.462$, and $47, 25.933, 64.372$ is the 20% darker color. If you saturate the color by 10%, you get $64, 33.527, 63.351$, and if you desaturate by 10%, it is $70, 18.487, 65.517$.

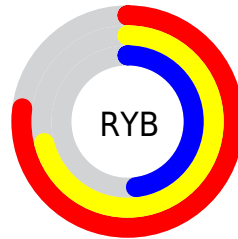
Distribution



Red (77%)

Green (61%)

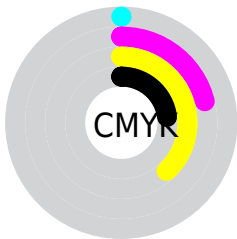
Blue (48%)



Red (77%)

Yellow (71%)

Blue (48%)

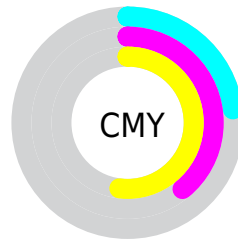


Cyan (0%)

Magenta (21%)

Yellow (38%)

Black (23%)



Cyan (23%)

Magenta (39%)

Yellow (52%)

Brightness & Saturation Gradients

These gradients show how the CIELCh color 67, 25.806, 64.420 changes by changing the brightness by 10 percent. The first figure shows a shift by +10% for each color and the second figure -10%.

Similar to the brightness gradients but the following saturation gradients show a change of the CIELCh color 67, 25.806, 64.420 by changing the saturation by 10% instead.

67, 25.806, 64.420

67, 25.806, 64.420

100, 25.806,
64.420

57, 25.806, 64.420

87, 25.806, 64.420

47, 25.806, 64.420

97, 25.806, 64.420

37, 25.806, 64.420

27, 25.806, 64.420

17, 25.806, 64.420

7, 25.806, 64.420

0, 25.806, 64.420

67, 25.806, 64.420

67, 25.806, 64.420

64, 33.527, 63.351

70, 18.487, 65.517

61, 41.602, 62.284

73, 11.569, 66.615

58, 49.888, 61.189

77, 5.032, 67.685

55, 58.053, 59.961

80, 1.159, 249.230

53, 65.422, 58.371

83, 7.039, 250.029

51, 71.134, 56.135

87, 12.643,
251.075

50, 72.202, 55.752

90, 16.304,
246.332

93, 16.147,
221.233

96, 18.734,
199.825

Harmonies

Complementary

The Complementary color scheme is a pair of colors which are on the opposite of each other on the color wheel.



67, 25.806, 64.420



65, 22.220, 254.754

Rectangle

The Rectangle color scheme consists of four colors that form a rectangle on the color wheel.



67, 25.806, 64.420



67, 25.806, 114.420



67, 25.806, 244.420



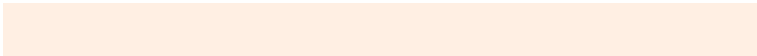
67, 25.806, 294.420

Sweetspot

The Sweet Spot groups the original color and five complimentary colors.



67, 25.806, 64.426



95, 8.509, 67.365



60, 36.687, 343.629



50, 5.740, 67.218



0, 0.000, 0.000



53, 0.007, 296.813

Same Dimension

The Same Dimension uses a secret algorithm to generate beautiful new colors.



67, 25.806, 64.426



82, 39.413, 63.499



77, 36.921, 103.460



40, 3.567, 67.553



42, 62.595, 56.310



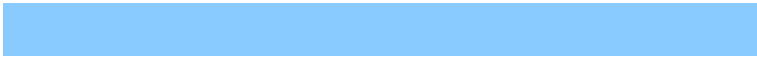
7, 13.006, 50.623

Inverse Universe

The Inverse Universe completely reimagines the original color for something new.



65, 22.220, 254.754



79, 32.643, 256.827



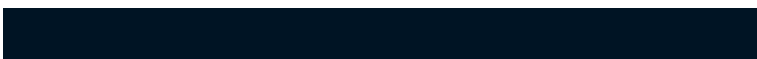
55, 40.140, 292.583



40, 3.459, 249.863



38, 45.407, 277.035



6, 13.072, 264.487

Previews

White Background



This preview shows how the CIELCh color 67, 25.806, 64.420 looks on a white background.

Color Contrast Check

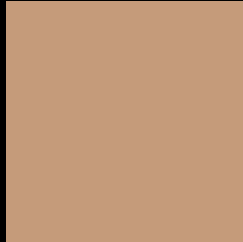
Large Text (above 18pt) WCAG AA × Fail

Any Text WCAG AA × Fail

Large Text (above 18pt) WCAG AAA × Fail

Any Text WCAG AAA × Fail

Black Background



This preview shows how the CIELCh color 67, 25.806, 64.420 looks on a black background.

Color Contrast Check

Large Text (above 18pt) WCAG AA ✓ Pass

Any Text WCAG AA ✓ Pass

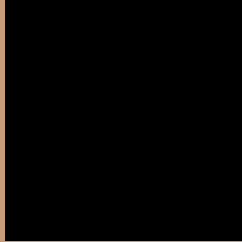
Large Text (above 18pt) WCAG AAA ✓ Pass

Any Text WCAG AAA ✓ Pass

If you want to check with other color combinations, try the [Color Contrast Checker](#).

CIELCh 67, 25.806, 64.420

Background



This preview shows how black text looks on a background with the CIELCh color 67, 25.806, 64.420.

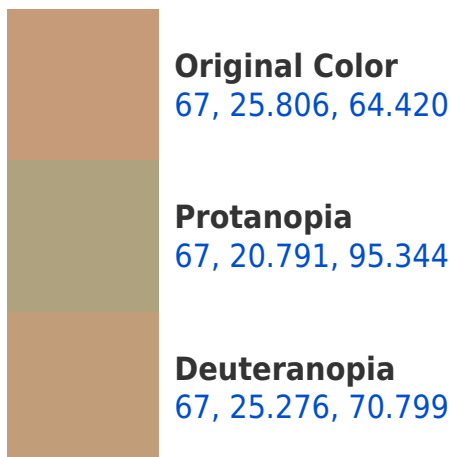


This preview shows how white text looks on a background with the CIELCh color 67, 25.806, 64.420.

Color Blindness Simulation

Color vision deficiency is a very complex topic, and I could not describe the different causes any better than Wikipedia does, so if you want to learn more, you should check out their [article about color blindness](#).

Dichromacy





Tritanopia
67, 20.854, 4.760

Trichromacy



Original Color
67, 25.806, 64.420

Protanomaly
67, 21.910, 83.141

Deuteranomaly
67, 25.427, 68.633

Tritanomaly
67, 19.307, 29.241

Monochromacy



Original Color
67, 25.806, 64.420

Achromatopsia
67, 0.008, 296.813

Achromatomaly
67, 8.897, 67.423

CSS Examples

Text

The CSS property to change the color of the text to CIELCh 67, 25.806, 64.420 is called "color". The color property can be set on classes, ids or directly on the HTML element.

This example shows how text in the color `rgb(197, 155, 122)` looks like.

```
.text, #text, p{  
    color:rgb(197, 155, 122)  
}
```

If you want to add a text shadow in that color use the text-shadow property, you can generate a text shadow directly with our [CSS Text Shadow Generator](#).

Here you see how black text with a 4 pixel rgb(197, 155, 122) colored shadow looks like.

```
.shadow{ text-shadow: 4px 4px 2px rgb(197, 155, 122) }
```

Border

The CSS property to change the border of an element to CIELCh 67, 25.806, 64.420 is called "border". The border property can be set on classes, ids or directly on the HTML element.

This example shows the color as border, it can be applied via the CSS property "border" or "border-color".

```
.border, #border, table{ border:4px solid rgb(197, 155, 122) }
```

If only the border color should be changed use the property `border-color`.

```
.border{ border-color:rgb(197, 155, 122) }
```

If you want to add a box shadow in that color use:

Here you see how a box with a 4 pixel `rgb(197, 155, 122)` colored shadow looks like.

```
.boxshadow{ -moz-box-shadow:4px 4px 4px  
4px rgb(197, 155, 122); -webkit-box-  
shadow:4px 4px 4px 4px rgb(197, 155, 122);  
box-shadow:4px 4px 4px 4px rgb(197, 155,  
122) }
```

Background

The CSS property to change the background color of an element to CIELCh 67, 25.806, 64.420 is called "background". The background property can be set on classes, ids or directly on the HTML element.

```
.background, #background, body{  
background: rgb(197, 155, 122) }
```

If only the background color should be changed can be used:

```
.background{ background-color: rgb(197,  
155, 122) }
```

This example shows the color as background, it is applied via the CSS property "background".

To optimize and compress your CSS code, you can use our [online CSS compressor and optimizer](#) based on csstidy. If you want to create a linear or radial gradient as background or border, check our [CSS Gradient Generator](#).

Hey! You found this booklet interesting? Support Converting Colors with the new Membership Option!

The pro membership hides all ads, plus gives you double the colors in the color bucket, and more awesome pro features!

[Learn more, Memberships starting at \\$2.50/m!](#)

**Follow me
on Twitter!**

@ConvertingColor