

Converting Colors

CIELCh(67, 27.504, 70.456)

Have a look what the booklet for
CIELCh(67, 27.504, 70.456) contains.

CIELCh(67, 27.504, 70.456)	3
<i>Conversions</i>	4
<i>Details</i>	6
<i>Harmonies</i>	11
<i>Previews</i>	20
<i>Color Blindness Simulation</i>	23
<i>CSS Examples</i>	26

Color

CIELCh(67, 27.504, 70.456)

Conversions

Conversions Part 1

Format	Color
Hex	C39C75
RGB	195, 156, 117
RGB Percent	76%, 61%, 46%
CMY	0.2356, 0.3885, 0.5414
CMYK	0.00, 0.20, 0.40, 0.24
HSL	30°, 39%, 61%
HSV	30°, 40%, 76%
XYZ	37.5736, 36.6320, 21.9016
YIQ	163.2150, 35.7630, -3.8610

Conversions

Conversions Part 2

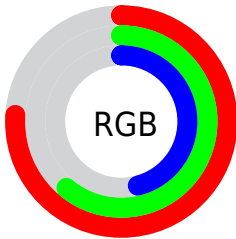
Format	Color
RYB	195, 195, 117
Decimal	12819573
CIELab	67.00, 9.20, 25.92
CIELCh	67, 27.504, 70.456
Yxy	36.6320, 0.3910, 0.3812
Android (android.graphics.Color)	4291009653 (0xFFC39C75)
YUV	163.2150, -22.7840, 27.8754
Hunter-Lab	60.5244, 4.8955, 20.9121

Details

The CIELCh color **67, 27.504, 70.456** is a light color, and the websafe version is hex **CC9966**. A complement of this color would be **63, 24.553, 262.275**, and the grayscale version is **67, 0.008, 296.813**.

A 20% lighter version of the original color is **87, 27.652, 70.009**, and **47, 27.725, 70.549** is the 20% darker color. If you saturate the color by 10%, you get **64, 35.162, 69.194**, and if you desaturate by 10%, it is **70, 20.150, 71.716**.

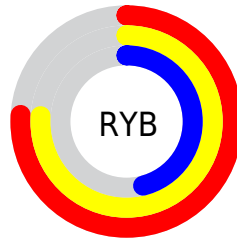
Distribution



Red (76%)

Green (61%)

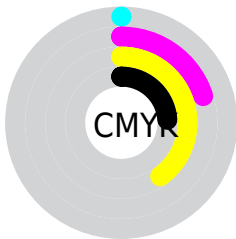
Blue (46%)



Red (76%)

Yellow (76%)

Blue (46%)

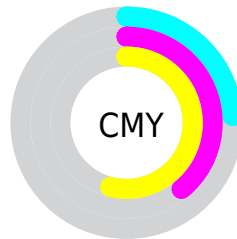


Cyan (0%)

Magenta (20%)

Yellow (40%)

Black (24%)



Cyan (24%)

Magenta (39%)

Yellow (54%)

Brightness & Saturation Gradients

These gradients show how the CIELCh color 67, 27.504, 70.456 changes by changing the brightness by 10 percent. The first figure shows a shift by +10% for each color and the second figure -10%.

Similar to the brightness gradients but the following saturation gradients show a change of the CIELCh color 67, 27.504, 70.456 by changing the saturation by 10% instead.

67, 27.504, 70.456

67, 27.504, 70.456

100, 27.504,
70.456

57, 27.504, 70.456

87, 27.504, 70.456

47, 27.504, 70.456

97, 27.504, 70.456

37, 27.504, 70.456

27, 27.504, 70.456

17, 27.504, 70.456

7, 27.504, 70.456

0, 27.504, 70.456

67, 27.504, 70.456

67, 27.504, 70.456

64, 35.162, 69.194

70, 20.150, 71.716

62, 43.044, 67.897

73, 13.121, 72.956

59, 50.954, 66.524

76, 6.411, 74.160

57, 58.483, 64.958

79, 0.006, 332.248

54, 64.889, 62.965

82, 6.144, 256.666

52, 69.693, 60.446

85, 12.044,
257.782

88, 17.729,
258.877

91, 16.486,
240.620

93, 16.767,
219.047

Harmonies

Complementary

The Complementary color scheme is a pair of colors which are on the opposite of each other on the color wheel.



67, 27.504, 70.456



63, 24.553, 262.275

Rectangle

The Rectangle color scheme consists of four colors that form a rectangle on the color wheel.



67, 27.504, 70.456



67, 27.504, 120.456



67, 27.504, 250.456



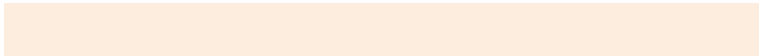
67, 27.504, 300.456

Sweetspot

The Sweet Spot groups the original color and five complimentary colors.



67, 27.504, 70.462



95, 9.531, 73.904



59, 36.720, 347.607



50, 6.393, 73.744



0, 0.000, 0.000



53, 0.007, 296.813

Same Dimension

The Same Dimension uses a secret algorithm to generate beautiful new colors.



67, 27.504, 70.462



82, 41.519, 69.355



77, 40.801, 106.358



39, 3.609, 74.235



43, 60.211, 61.030



6, 11.488, 58.243

Inverse Universe

The Inverse Universe completely reimagines the original color for something new.



63, 24.553, 262.275



76, 36.071, 264.501



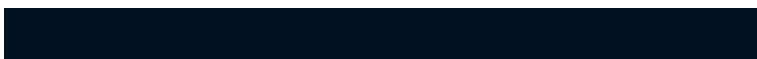
52, 45.224, 295.514



39, 3.532, 256.696



35, 50.595, 283.557



5, 12.822, 269.409

Previews

White Background



This preview shows how the CIELCh color 67, 27.504, 70.456 looks on a white background.

Color Contrast Check

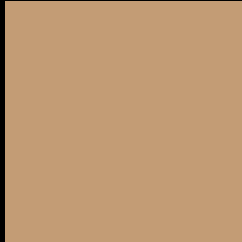
Large Text (above 18pt) WCAG AA × Fail

Any Text WCAG AA × Fail

Large Text (above 18pt) WCAG AAA × Fail

Any Text WCAG AAA × Fail

Black Background



This preview shows how the CIELCh color 67, 27.504, 70.456 looks on a black background.

Color Contrast Check

Large Text (above 18pt) WCAG AA ✓ Pass

Any Text WCAG AA ✓ Pass

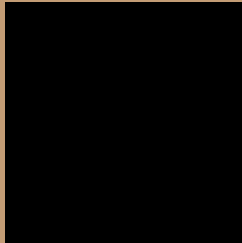
Large Text (above 18pt) WCAG AAA ✓ Pass

Any Text WCAG AAA ✓ Pass

If you want to check with other color combinations, try the [Color Contrast Checker](#).

CIELCh 67, 27.504, 70.456

Background



This preview shows how black text looks on a background with the CIELCh color 67, 27.504, 70.456.



This preview shows how white text looks on a background with the CIELCh color 67, 27.504, 70.456.

Color Blindness Simulation

Color vision deficiency is a very complex topic, and I could not describe the different causes any better than Wikipedia does, so if you want to learn more, you should check out their [article about color blindness](#).

Dichromacy



Original Color

67, 27.504, 70.456

Protanopia

67, 24.071, 95.601

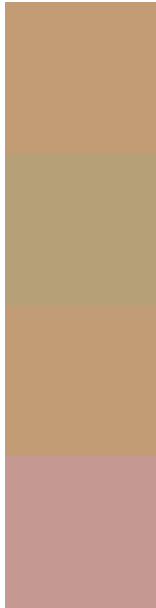
Deuteranopia

67, 27.227, 71.157



Tritanopia
67, 20.217, 2.498

Trichromacy



Original Color
67, 27.504, 70.456

Protanomaly
67, 24.440, 85.368

Deuteranomaly
67, 27.227, 71.157

Tritanomaly
67, 19.035, 30.972

Monochromacy



Original Color
67, 27.504, 70.456

Achromatopsia
67, 0.008, 296.813

Achromatomaly
67, 9.774, 71.531

CSS Examples

Text

The CSS property to change the color of the text to CIELCh 67, 27.504, 70.456 is called "color". The color property can be set on classes, ids or directly on the HTML element.

This example shows how text in the color `rgb(195, 156, 117)` looks like.

```
.text, #text, p{  
    color:rgb(195, 156, 117)  
}
```

If you want to add a text shadow in that color use the text-shadow property, you can generate a text shadow directly with our [CSS Text Shadow Generator](#).

Here you see how black text with a 4 pixel rgb(195, 156, 117) colored shadow looks like.

```
.shadow{ text-shadow: 4px 4px 2px rgb(195, 156, 117) }
```

Border

The CSS property to change the border of an element to CIELCh 67, 27.504, 70.456 is called "border". The border property can be set on classes, ids or directly on the HTML element.

This example shows the color as border, it can be applied via the CSS property "border" or "border-color".

```
.border, #border, table{ border:4px solid rgb(195, 156, 117) }
```

If only the border color should be changed use the property `border-color`.

```
.border{ border-color:rgb(195, 156, 117) }
```

If you want to add a box shadow in that color use:

Here you see how a box with a 4 pixel `rgb(195, 156, 117)` colored shadow looks like.

```
.boxshadow{ -moz-box-shadow:4px 4px 4px 4px rgb(195, 156, 117); -webkit-box-shadow:4px 4px 4px 4px rgb(195, 156, 117); box-shadow:4px 4px 4px 4px rgb(195, 156, 117) }
```

Background

The CSS property to change the background color of an element to CIELCh 67, 27.504, 70.456 is called "background". The background property can be set on classes, ids or directly on the HTML element.

```
.background, #background, body{  
background: rgb(195, 156, 117) }
```

If only the background color should be changed can be used:

```
.background{ background-color: rgb(195,  
156, 117) }
```

This example shows the color as background, it is applied via the CSS property "background".

To optimize and compress your CSS code, you can use our [online CSS compressor and optimizer](#) based on csstidy. If you want to create a linear or radial gradient as background or border, check our [CSS Gradient Generator](#).

Hey! You found this booklet interesting? Support Converting Colors with the new Membership Option!

The pro membership hides all ads, plus gives you double the colors in the color bucket, and more awesome pro features!

[Learn more, Memberships starting at \\$2.50/m!](#)

**Follow me
on Twitter!**

@ConvertingColor