

Converting Colors

CIELCh(67, 28.608, 72.816)

Have a look what the booklet for
CIELCh(67, 28.608, 72.816) contains.

CIELCh(67, 28.608, 72.816)	3
<i>Conversions</i>	4
<i>Details</i>	6
<i>Harmonies</i>	11
<i>Previews</i>	20
<i>Color Blindness Simulation</i>	23
<i>CSS Examples</i>	26

Color

CIELCh(67, 28.608, 72.816)

Conversions

Conversions Part 1

Format	Color
Hex	C29C72
RGB	194, 156, 114
RGB Percent	76%, 61%, 45%
CMY	0.2378, 0.3869, 0.5517
CMYK	0.00, 0.20, 0.41, 0.24
HSL	31°, 40%, 61%
HSV	31°, 41%, 76%
XYZ	37.3440, 36.6320, 21.1196
YIQ	162.5740, 36.1300, -5.0060

Conversions

Conversions Part 2

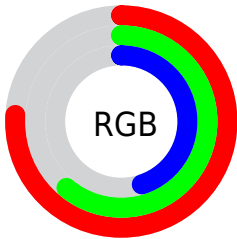
Format	Color
RYB	186, 194, 114
Decimal	12754034
CIELab	67.00, 8.45, 27.33
CIElCh	67, 28.608, 72.816
Yxy	36.6320, 0.3927, 0.3852
Android (android.graphics.Color)	4290944114 (0xFFC29C72)
YUV	162.5740, -23.9470, 27.5606
Hunter-Lab	60.5244, 4.2184, 21.6781

Details

The CIELCh color **67, 28.608, 72.816** is a light color, and the websafe version is hex **CC9966**. A complement of this color would be **62, 25.924, 265.261**, and the grayscale version is **67, 0.008, 296.813**.

A 20% lighter version of the original color is **87, 28.688, 72.321**, and **47, 28.892, 72.910** is the 20% darker color. If you saturate the color by 10%, you get **64, 36.265, 71.495**, and if you desaturate by 10%, it is **70, 21.209, 74.125**.

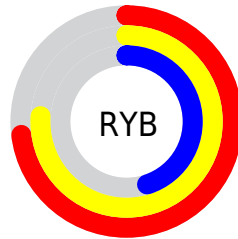
Distribution



Red (76%)

Green (61%)

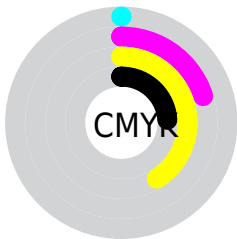
Blue (45%)



Red (73%)

Yellow (76%)

Blue (45%)

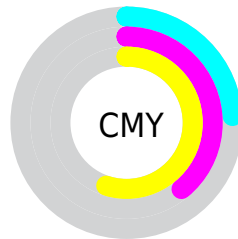


Cyan (0%)

Magenta (20%)

Yellow (41%)

Black (24%)



Cyan (24%)

Magenta (39%)

Yellow (55%)

Brightness & Saturation Gradients

These gradients show how the CIELCh color 67, 28.608, 72.816 changes by changing the brightness by 10 percent. The first figure shows a shift by +10% for each color and the second figure -10%.

Similar to the brightness gradients but the following saturation gradients show a change of the CIELCh color 67, 28.608, 72.816 by changing the saturation by 10% instead.

■ 67, 28.608, 72.816

■ 67, 28.608, 72.816

■ 100, 28.608,
72.816

■ 57, 28.608, 72.816

■ 87, 28.608, 72.816

■ 47, 28.608, 72.816

■ 97, 28.608, 72.816

■ 37, 28.608, 72.816

■ 27, 28.608, 72.816

■ 17, 28.608, 72.816

■ 7, 28.608, 72.816

■ 0, 28.608, 72.816

■ 67, 28.608, 72.816

■ 67, 28.608, 72.816

■ 64, 36.265, 71.495

■ 70, 21.209, 74.125

62, 44.079, 70.126

73, 14.101, 75.405

59, 51.824, 68.662

75, 7.285, 76.649

57, 59.047, 66.980

78, 0.746, 77.477

55, 64.971, 64.843

81, 5.538, 259.199

53, 68.869, 62.547

84, 11.593,
260.330

87, 17.444,
261.441

90, 17.091,
248.157

92, 16.515,
227.925

Harmonies

Complementary

The Complementary color scheme is a pair of colors which are on the opposite of each other on the color wheel.



67, 28.608, 72.816



62, 25.924, 265.261

Rectangle

The Rectangle color scheme consists of four colors that form a rectangle on the color wheel.



67, 28.608, 72.816



67, 28.608, 122.816



67, 28.608, 252.816



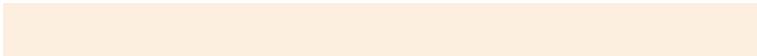
67, 28.608, 302.816

Sweetspot

The Sweet Spot groups the original color and five complimentary colors.



67, 28.608, 72.822



95, 9.691, 76.526



58, 37.339, 348.754



51, 6.499, 76.363



0, 0.000, 0.000



53, 0.007, 296.813

Same Dimension

The Same Dimension uses a secret algorithm to generate beautiful new colors.



67, 28.608, 72.822



82, 42.819, 71.683



77, 41.843, 107.014



39, 3.671, 76.866



44, 59.661, 63.117



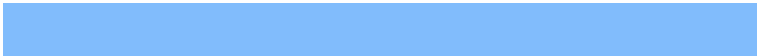
7, 11.541, 61.122

Inverse Universe

The Inverse Universe completely reimagines the original color for something new.



62, 25.924, 265.261



74, 37.970, 267.489



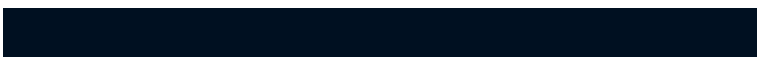
52, 46.551, 296.202



39, 3.606, 259.361



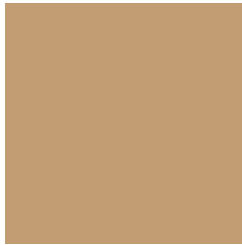
34, 53.142, 285.925



4, 13.166, 271.404

Previews

White Background



This preview shows how the CIELCh color 67, 28.608, 72.816 looks on a white background.

Color Contrast Check

Large Text (above 18pt) WCAG AA × Fail

Any Text WCAG AA × Fail

Large Text (above 18pt) WCAG AAA × Fail

Any Text WCAG AAA × Fail

Black Background



This preview shows how the CIELCh color 67, 28.608, 72.816 looks on a black background.

Color Contrast Check

Large Text (above 18pt) WCAG AA ✓ Pass

Any Text WCAG AA ✓ Pass

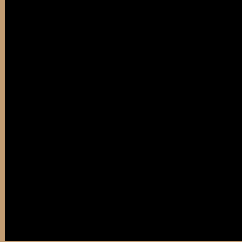
Large Text (above 18pt) WCAG AAA ✓ Pass

Any Text WCAG AAA ✓ Pass

If you want to check with other color combinations, try the [Color Contrast Checker](#).

CIELCh 67, 28.608, 72.816

Background



This preview shows how black text looks on a background with the CIELCh color 67, 28.608, 72.816.



This preview shows how white text looks on a background with the CIELCh color 67, 28.608, 72.816.

Color Blindness Simulation

Color vision deficiency is a very complex topic, and I could not describe the different causes any better than Wikipedia does, so if you want to learn more, you should check out their [article about color blindness](#).

Dichromacy



Original Color

67, 28.608, 72.816

Protanopia

67, 25.751, 95.201

Deuteranopia

67, 28.608, 72.816



Tritanopia
67, 20.217, 2.498

Trichromacy



Original Color
67, 28.608, 72.816

Protanomaly
67, 26.451, 86.822

Deuteranomaly
67, 28.608, 72.816

Tritanomaly
67, 18.780, 32.756

Monochromacy



Original Color
67, 28.608, 72.816

Achromatopsia
67, 0.008, 296.813

Achromatomaly
67, 10.231, 78.691

CSS Examples

Text

The CSS property to change the color of the text to CIELCh 67, 28.608, 72.816 is called "color". The color property can be set on classes, ids or directly on the HTML element.

This example shows how text in the color `rgb(194, 156, 114)` looks like.

```
.text, #text, p{  
    color:rgb(194, 156, 114)  
}
```

If you want to add a text shadow in that color use the text-shadow property, you can generate a text shadow directly with our [CSS Text Shadow Generator](#).

Here you see how black text with a 4 pixel rgb(194, 156, 114) colored shadow looks like.

```
.shadow{ text-shadow: 4px 4px 2px rgb(194, 156, 114) }
```

Border

The CSS property to change the border of an element to CIELCh 67, 28.608, 72.816 is called "border". The border property can be set on classes, ids or directly on the HTML element.

This example shows the color as border, it can be applied via the CSS property "border" or "border-color".

```
.border, #border, table{ border:4px solid rgb(194, 156, 114) }
```

If only the border color should be changed use the property `border-color`.

```
.border{ border-color:rgb(194, 156, 114) }
```

If you want to add a box shadow in that color use:

Here you see how a box with a 4 pixel `rgb(194, 156, 114)` colored shadow looks like.

```
.boxshadow{ -moz-box-shadow:4px 4px 4px  
4px rgb(194, 156, 114); -webkit-box-  
shadow:4px 4px 4px 4px rgb(194, 156, 114);  
box-shadow:4px 4px 4px 4px rgb(194, 156,  
114) }
```

Background

The CSS property to change the background color of an element to CIELCh 67, 28.608, 72.816 is called "background". The background property can be set on classes, ids or directly on the HTML element.

```
.background, #background, body{  
background: rgb(194, 156, 114) }
```

If only the background color should be changed can be used:

```
.background{ background-color: rgb(194,  
156, 114) }
```

This example shows the color as background, it is applied via the CSS property "background".

To optimize and compress your CSS code, you can use our [online CSS compressor and optimizer](#) based on csstidy. If you want to create a linear or radial gradient as background or border, check our [CSS Gradient Generator](#).

Hey! You found this booklet interesting? Support Converting Colors with the new Membership Option!

The pro membership hides all ads, plus gives you double the colors in the color bucket, and more awesome pro features!

[Learn more, Memberships starting at \\$2.50/m!](#)

**Follow me
on Twitter!**

@ConvertingColor