

Converting Colors

CIELCh(67, 29.107, 46.938)

Have a look what the booklet for
CIELCh(67, 29.107, 46.938) contains.

CIELCh(67, 29.268, 46.670)	3
<i>Conversions</i>	4
<i>Details</i>	6
<i>Harmonies</i>	11
<i>Previews</i>	20
<i>Color Blindness Simulation</i>	23
<i>CSS Examples</i>	26

Color

CIELCh(67, 29.268, 46.670)

Conversions

Conversions Part 1

Format	Color
Hex	D2957E
RGB	210, 149, 126
RGB Percent	82%, 58%, 49%
CMY	0.1771, 0.4162, 0.5064
CMYK	0.00, 0.29, 0.40, 0.18
HSL	16°, 48%, 66%
HSV	16°, 40%, 82%
XYZ	41.0166, 36.6320, 24.6012
YIQ	164.6170, 43.7390, 5.7790

Conversions

Conversions Part 2

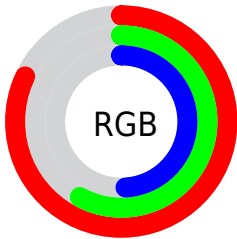
Format	Color
R _Y B	210, 158, 126
Decimal	13800830
CIE Lab	67.00, 20.08, 21.29
CIE LCh	67, 29.268, 46.670
Yxy	36.6320, 0.4011, 0.3583
Android (android.graphics.Color)	4291990910 (0xFFD2957E)
YUV	164.6170, -19.0382, 39.8009
Hunter-Lab	60.5244, 15.0497, 18.2676

Details

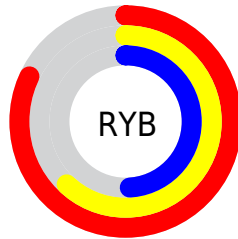
The CIELCh color **67, 29.268, 46.670** is a light color, and the websafe version is hex **CC9999**. A complement of this color would be **73, 22.451, 232.303**, and the grayscale version is **68, 0.008, 296.813**.

A 20% lighter version of the original color is **86, 24.248, 51.503**, and **47, 29.018, 46.800** is the 20% darker color. If you saturate the color by 10%, you get **63, 38.054, 46.557**, and if you desaturate by 10%, it is **71, 21.090, 46.930**.

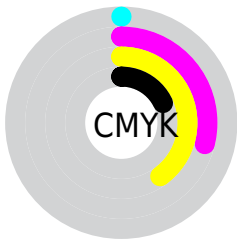
Distribution



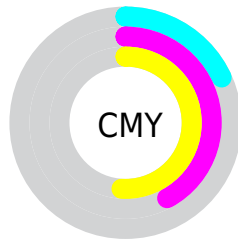
- Red (82%)
- Green (58%)
- Blue (49%)



- Red (82%)
- Yellow (62%)
- Blue (49%)



- Cyan (0%)
- Magenta (29%)
- Yellow (40%)
- Black (18%)



- Cyan (18%)
- Magenta (42%)
- Yellow (51%)

Brightness & Saturation Gradients

These gradients show how the CIELCh color 67, 29.268, 46.670 changes by changing the brightness by 10 percent. The first figure shows a shift by +10% for each color and the second figure -10%.

Similar to the brightness gradients but the following saturation gradients show a change of the CIELCh color 67, 29.268, 46.670 by changing the saturation by 10% instead.

67, 29.268, 46.670

67, 29.268, 46.670

100, 29.268,
46.670

57, 29.268, 46.670

87, 29.268, 46.670

47, 29.268, 46.670

97, 29.268, 46.670

37, 29.268, 46.670

27, 29.268, 46.670

17, 29.268, 46.670

7, 29.268, 46.670

0, 29.268, 46.670

67, 29.268, 46.670

67, 29.268, 46.670

63, 38.054, 46.557

71, 21.090, 46.930

59, 47.406, 46.585

75, 13.514, 47.293

56, 57.169, 46.735

80, 6.504, 47.717

53, 66.961, 46.887

84, 0.013, 2.901

50, 75.922, 46.716

89, 6.023, 229.001

48, 83.011, 45.969

93, 11.647,
229.567

97, 15.047,
198.504

Harmonies

Complementary

The Complementary color scheme is a pair of colors which are on the opposite of each other on the color wheel.



67, 29.268, 46.670



73, 22.451, 232.303

Rectangle

The Rectangle color scheme consists of four colors that form a rectangle on the color wheel.



67, 29.268, 46.670



67, 29.268, 96.670



67, 29.268, 226.670



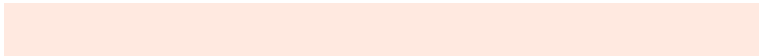
67, 29.268, 276.670

Sweetspot

The Sweet Spot groups the original color and five complimentary colors.



67, 29.267, 46.676



94, 9.199, 47.627



63, 45.172, 335.835



49, 6.133, 47.569



0, 0.000, 0.000



53, 0.007, 296.813

Same Dimension

The Same Dimension uses a secret algorithm to generate beautiful new colors.



67, 29.267, 46.676



76, 42.527, 46.565



77, 35.081, 93.454



42, 3.663, 47.742



38, 70.038, 46.451



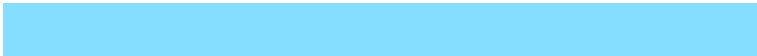
6, 17.091, 35.320

Inverse Universe

The Inverse Universe completely reimagines the original color for something new.



73, 22.451, 232.303



84, 30.471, 233.790



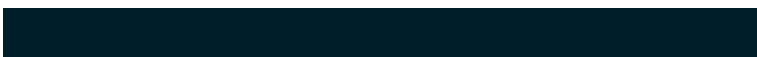
61, 36.465, 284.629



43, 3.474, 229.018



48, 34.431, 250.712



10, 12.455, 239.746

Previews

White Background



This preview shows how the CIELCh color 67, 29.268, 46.670 looks on a white background.

Color Contrast Check

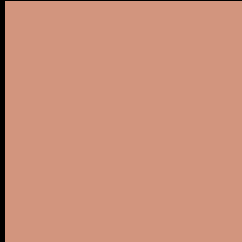
Large Text (above 18pt) WCAG AA × Fail

Any Text WCAG AA × Fail

Large Text (above 18pt) WCAG AAA × Fail

Any Text WCAG AAA × Fail

Black Background



This preview shows how the CIELCh color 67, 29.268, 46.670 looks on a black background.

Color Contrast Check

Large Text (above 18pt) WCAG AA ✓ Pass

Any Text WCAG AA ✓ Pass

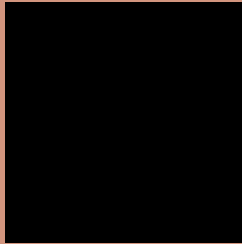
Large Text (above 18pt) WCAG AAA ✓ Pass

Any Text WCAG AAA ✓ Pass

If you want to check with other color combinations, try the [Color Contrast Checker](#).

CIELCh 67, 29.268, 46.670

Background



This preview shows how black text looks on a background with the CIELCh color 67, 29.268, 46.670.

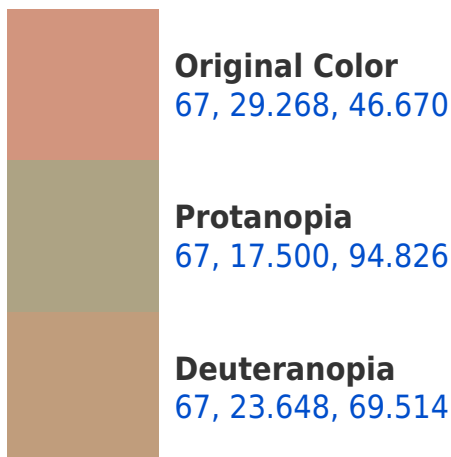


This preview shows how white text looks on a background with the CIELCh color 67, 29.268, 46.670.

Color Blindness Simulation

Color vision deficiency is a very complex topic, and I could not describe the different causes any better than Wikipedia does, so if you want to learn more, you should check out their [article about color blindness](#).

Dichromacy





Tritanopia
67, 27.621, 9.779

Trichromacy



Original Color
67, 29.268, 46.670

Protanomaly
67, 19.458, 71.709

Deuteranomaly
67, 24.863, 59.948

Tritanomaly
67, 26.996, 23.191

Monochromacy



Original Color
67, 29.268, 46.670

Achromatopsia
67, 0.008, 296.813

Achromatomaly
67, 10.182, 45.612

CSS Examples

Text

The CSS property to change the color of the text to CIELCh 67, 29.268, 46.670 is called "color". The color property can be set on classes, ids or directly on the HTML element.

This example shows how text in the color `rgb(210, 149, 126)` looks like.

```
.text, #text, p{  
    color:rgb(210, 149, 126)  
}
```

If you want to add a text shadow in that color use the text-shadow property, you can generate a text shadow directly with our [CSS Text Shadow Generator](#).

Here you see how black text with a 4 pixel rgb(210, 149, 126) colored shadow looks like.

```
.shadow{ text-shadow: 4px 4px 2px rgb(210, 149, 126) }
```

Border

The CSS property to change the border of an element to CIELCh 67, 29.268, 46.670 is called "border". The border property can be set on classes, ids or directly on the HTML element.

This example shows the color as border, it can be applied via the CSS property "border" or "border-color".

```
.border, #border, table{ border:4px solid rgb(210, 149, 126) }
```

If only the border color should be changed use the property `border-color`.

```
.border{ border-color:rgb(210, 149, 126) }
```

If you want to add a box shadow in that color use:

Here you see how a box with a 4 pixel `rgb(210, 149, 126)` colored shadow looks like.

```
.boxshadow{ -moz-box-shadow:4px 4px 4px  
4px rgb(210, 149, 126); -webkit-box-  
shadow:4px 4px 4px 4px rgb(210, 149, 126);  
box-shadow:4px 4px 4px 4px rgb(210, 149,  
126) }
```

Background

The CSS property to change the background color of an element to CIELCh 67, 29.268, 46.670 is called "background". The background property can be set on classes, ids or directly on the HTML element.

```
.background, #background, body{  
background: rgb(210, 149, 126) }
```

If only the background color should be changed can be used:

```
.background{ background-color: rgb(210,  
149, 126) }
```

This example shows the color as background, it is applied via the CSS property "background".

To optimize and compress your CSS code, you can use our [online CSS compressor and optimizer](#) based on csstidy. If you want to create a linear or radial gradient as background or border, check our [CSS Gradient Generator](#).

Hey! You found this booklet interesting? Support Converting Colors with the new Membership Option!

The pro membership hides all ads, plus gives you double the colors in the color bucket, and more awesome pro features!

[Learn more, Memberships starting at \\$2.50/m!](#)

**Follow me
on Twitter!**

@ConvertingColor