

Converting Colors

CIELCh(67, 30.522, 59.594)

Have a look what the booklet for
CIELCh(67, 30.522, 59.594) contains.

CIELCh(67, 30.383, 59.442)	3
<i>Conversions</i>	4
<i>Details</i>	6
<i>Harmonies</i>	11
<i>Previews</i>	20
<i>Color Blindness Simulation</i>	23
<i>CSS Examples</i>	26

Color

CIELCh(67, 30.383, 59.442)

Conversions

Conversions Part 1

Format	Color
Hex	CD9875
RGB	205, 152, 117
RGB Percent	80%, 60%, 46%
CMY	0.1968, 0.4046, 0.5418
CMYK	0.00, 0.26, 0.43, 0.20
HSL	24°, 47%, 63%
HSV	24°, 43%, 80%
XYZ	39.5251, 36.6320, 21.7651
YIQ	163.8570, 42.8230, 0.3510

Conversions

Conversions Part 2

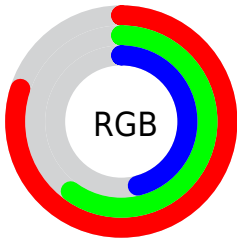
Format	Color
R_{YB}	205, 175, 117
Decimal	13473909
CIE _{Lab}	67.00, 15.45, 26.16
CIE _{LCh}	67, 30.383, 59.442
Yxy	36.6320, 0.4036, 0.3741
Android (android.graphics.Color)	4291663989 (0xFFCD9875)
YUV	163.8570, -23.1005, 36.0824
Hunter-Lab	60.5244, 10.6509, 21.0458

Details

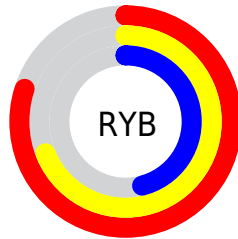
The CIELCh color **67, 30.383, 59.442** is a light color, and the websafe version is hex **CC9966**. A complement of this color would be **67, 24.728, 250.419**, and the grayscale version is **67, 0.008, 296.813**.

A 20% lighter version of the original color is **86, 27.816, 63.781**, and **47, 30.625, 59.527** is the 20% darker color. If you saturate the color by 10%, you get **64, 38.668, 58.576**, and if you desaturate by 10%, it is **70, 22.560, 60.361**.

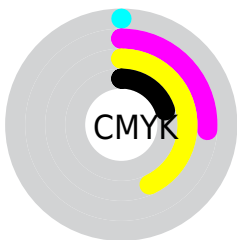
Distribution



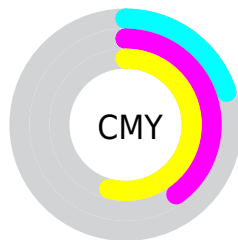
- Red (80%)
- Green (60%)
- Blue (46%)



- Red (80%)
- Yellow (69%)
- Blue (46%)



- Cyan (0%)
- Magenta (26%)
- Yellow (43%)
- Black (20%)



- Cyan (20%)
- Magenta (40%)
- Yellow (54%)

Brightness & Saturation Gradients

These gradients show how the CIELCh color 67, 30.383, 59.442 changes by changing the brightness by 10 percent. The first figure shows a shift by +10% for each color and the second figure -10%.

Similar to the brightness gradients but the following saturation gradients show a change of the CIELCh color 67, 30.383, 59.442 by changing the saturation by 10% instead.

67, 30.383, 59.442

67, 30.383, 59.442

100, 30.383,
59.442

57, 30.383, 59.442

87, 30.383, 59.442

47, 30.383, 59.442

97, 30.383, 59.442

37, 30.383, 59.442

27, 30.383, 59.442

17, 30.383, 59.442

7, 30.383, 59.442

0, 30.383, 59.442

67, 30.383, 59.442

67, 30.383, 59.442

64, 38.668, 58.576

70, 22.560, 60.361

61, 47.340, 57.731

74, 15.211, 61.310

58, 56.182, 56.850

78, 8.315, 62.274

55, 64.707, 55.770

81, 1.835, 63.086

52, 71.970, 54.147

85, 4.269, 244.448

51, 76.137, 52.718

89, 10.041,
245.388

92, 13.836,
238.010

96, 15.234,
207.276

97, 16.621,
198.402

Harmonies

Complementary

The Complementary color scheme is a pair of colors which are on the opposite of each other on the color wheel.



67, 30.383, 59.442



67, 24.728, 250.419

Rectangle

The Rectangle color scheme consists of four colors that form a rectangle on the color wheel.



67, 30.383, 59.442



67, 30.383, 109.442



67, 30.383, 239.442



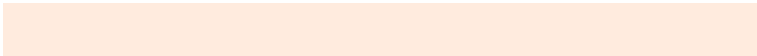
67, 30.383, 289.442

Sweetspot

The Sweet Spot groups the original color and five complimentary colors.



67, 30.382, 59.448



94, 9.975, 62.254



60, 43.900, 341.545



49, 7.029, 62.039



0, 0.000, 0.000



53, 0.007, 296.813

Same Dimension

The Same Dimension uses a secret algorithm to generate beautiful new colors.



67, 30.382, 59.448



78, 45.322, 58.601



78, 40.925, 100.326



41, 3.588, 62.609



41, 64.739, 53.312



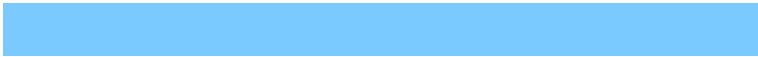
7, 14.653, 45.985

Inverse Universe

The Inverse Universe completely reimagines the original color for something new.



67, 24.728, 250.419



78, 34.937, 252.919



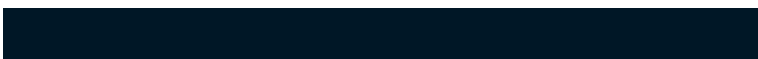
55, 44.539, 291.352



41, 3.457, 244.742



41, 42.218, 271.594



7, 13.322, 259.851

Previews

White Background



This preview shows how the CIELCh color 67, 30.383, 59.442 looks on a white background.

Color Contrast Check

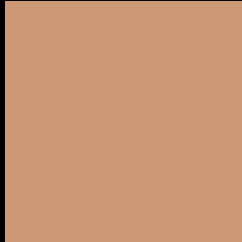
Large Text (above 18pt) WCAG AA × Fail

Any Text WCAG AA × Fail

Large Text (above 18pt) WCAG AAA × Fail

Any Text WCAG AAA × Fail

Black Background



This preview shows how the CIELCh color 67, 30.383, 59.442 looks on a black background.

Color Contrast Check

Large Text (above 18pt) WCAG AA ✓ Pass

Any Text WCAG AA ✓ Pass

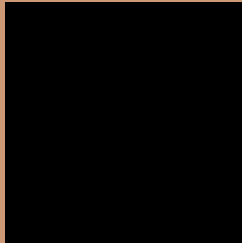
Large Text (above 18pt) WCAG AAA ✓ Pass

Any Text WCAG AAA ✓ Pass

If you want to check with other color combinations, try the [Color Contrast Checker](#).

CIELCh 67, 30.383, 59.442

Background



This preview shows how black text looks on a background with the CIELCh color 67, 30.383, 59.442.



This preview shows how white text looks on a background with the CIELCh color 67, 30.383, 59.442.

Color Blindness Simulation

Color vision deficiency is a very complex topic, and I could not describe the different causes any better than Wikipedia does, so if you want to learn more, you should check out their [article about color blindness](#).

Dichromacy





Tritanopia
67, 25.691, 7.328

Trichromacy



Original Color
67, 30.383, 59.442

Protanomaly
67, 24.431, 79.948

Deuteranomaly
67, 28.604, 66.508

Tritanomaly
67, 24.425, 28.059

Monochromacy



Original Color
67, 30.383, 59.442

Achromatopsia
67, 0.008, 296.813

Achromatomaly
67, 10.459, 62.792

CSS Examples

Text

The CSS property to change the color of the text to CIELCh 67, 30.383, 59.442 is called "color". The color property can be set on classes, ids or directly on the HTML element.

This example shows how text in the color `rgb(205, 152, 117)` looks like.

```
.text, #text, p{  
    color:rgb(205, 152, 117)  
}
```

If you want to add a text shadow in that color use the text-shadow property, you can generate a text shadow directly with our [CSS Text Shadow Generator](#).

Here you see how black text with a 4 pixel rgb(205, 152, 117) colored shadow looks like.

```
.shadow{ text-shadow: 4px 4px 2px rgb(205, 152, 117) }
```

Border

The CSS property to change the border of an element to CIELCh 67, 30.383, 59.442 is called "border". The border property can be set on classes, ids or directly on the HTML element.

This example shows the color as border, it can be applied via the CSS property "border" or "border-color".

```
.border, #border, table{ border:4px solid rgb(205, 152, 117) }
```

If only the border color should be changed use the property `border-color`.

```
.border{ border-color:rgb(205, 152, 117) }
```

If you want to add a box shadow in that color use:

Here you see how a box with a 4 pixel `rgb(205, 152, 117)` colored shadow looks like.

```
.boxshadow{ -moz-box-shadow:4px 4px 4px  
4px rgb(205, 152, 117); -webkit-box-  
shadow:4px 4px 4px 4px rgb(205, 152, 117);  
box-shadow:4px 4px 4px 4px rgb(205, 152,  
117) }
```

Background

The CSS property to change the background color of an element to CIELCh 67, 30.383, 59.442 is called "background". The background property can be set on classes, ids or directly on the HTML element.

```
.background, #background, body{  
background: rgb(205, 152, 117) }
```

If only the background color should be changed can be used:

```
.background{ background-color: rgb(205,  
152, 117) }
```

This example shows the color as background, it is applied via the CSS property "background".

To optimize and compress your CSS code, you can use our [online CSS compressor and optimizer](#) based on csstidy. If you want to create a linear or radial gradient as background or border, check our [CSS Gradient Generator](#).

Hey! You found this booklet interesting? Support Converting Colors with the new Membership Option!

The pro membership hides all ads, plus gives you double the colors in the color bucket, and more awesome pro features!

[Learn more, Memberships starting at \\$2.50/m!](#)

**Follow me
on Twitter!**

@ConvertingColor