

Converting Colors

CIELCh(67, 30.967, 9.880)

Have a look what the booklet for
CIELCh(67, 30.967, 9.880) contains.

CIELCh(67, 30.972, 9.537)	3
<i>Conversions</i>	4
<i>Details</i>	6
<i>Harmonies</i>	11
<i>Previews</i>	20
<i>Color Blindness Simulation</i>	23
<i>CSS Examples</i>	26

Color

CIELCh(67, 30.972, 9.537)

Conversions

Conversions Part 1

Format	Color
Hex	DA8E9B
RGB	218, 142, 155
RGB Percent	85%, 56%, 61%
CMY	0.1450, 0.4430, 0.3920
CMYK	0.00, 0.35, 0.29, 0.14
HSL	350°, 51%, 71%
HSV	350°, 35%, 86%
XYZ	44.5184, 36.6320, 35.7472
YIQ	166.2060, 41.1230, 20.1550

Conversions

Conversions Part 2

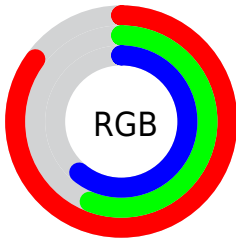
Format	Color
R _Y B	218, 142, 155
Decimal	14323355
CIE Lab	67.00, 30.54, 5.13
CIE LCh	67, 30.972, 9.537
Yxy	36.6320, 0.3808, 0.3134
Android (android.graphics.Color)	4292513435 (0xFFDA8E9B)
YUV	166.2060, -5.5246, 45.4233
Hunter-Lab	60.5244, 25.3771, 7.3489

Details

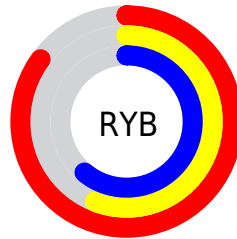
The CIELCh color **67, 30.972, 9.537** is a light color, and the websafe version is hex **CC9999**. A complement of this color would be **82, 26.364, 182.319**, and the grayscale version is **68, 0.008, 296.813**.

A 20% lighter version of the original color is **85, 23.002, 4.164**, and **47, 30.644, 9.776** is the 20% darker color. If you saturate the color by 10%, you get **62, 40.573, 11.341**, and if you desaturate by 10%, it is **73, 21.579, 8.082**.

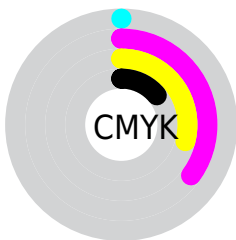
Distribution



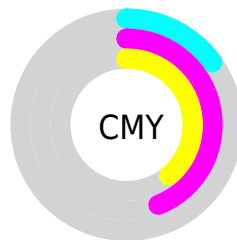
- Red (85%)
- Green (56%)
- Blue (61%)



- Red (85%)
- Yellow (56%)
- Blue (61%)



- Cyan (0%)
- Magenta (35%)
- Yellow (29%)
- Black (14%)



- Cyan (15%)
- Magenta (44%)
- Yellow (39%)

Brightness & Saturation Gradients

These gradients show how the CIELCh color 67, 30.972, 9.537 changes by changing the brightness by 10 percent. The first figure shows a shift by +10% for each color and the second figure -10%.

Similar to the brightness gradients but the following saturation gradients show a change of the CIELCh color 67, 30.972, 9.537 by changing the saturation by 10% instead.

67, 30.972, 9.537

67, 30.972, 9.537

100, 30.972, 9.537

57, 30.972, 9.537

87, 30.972, 9.537

47, 30.972, 9.537

97, 30.972, 9.537

37, 30.972, 9.537

27, 30.972, 9.537

17, 30.972, 9.537

7, 30.972, 9.537

0, 30.972, 9.537

67, 30.972, 9.537

67, 30.972, 9.537

62, 40.573, 11.341

73, 21.579, 8.082

■ 57, 50.134, 13.605

■ 78, 12.560, 6.872

■ 53, 59.314, 16.476

■ 84, 3.992, 5.781

■ 50, 67.757, 20.096

■ 90, 4.099, 185.205

■ 47, 75.215, 24.531

■ 96, 11.722,
184.383

■ 46, 81.626, 29.608

■ 97, 12.439,
198.675

■ 46, 84.673, 32.160

Harmonies

Complementary

The Complementary color scheme is a pair of colors which are on the opposite of each other on the color wheel.



67, 30.972, 9.537



82, 26.364, 182.319

Rectangle

The Rectangle color scheme consists of four colors that form a rectangle on the color wheel.



67, 30.972, 9.537



67, 30.972, 59.537



67, 30.972, 189.537



67, 30.972, 239.537

Sweetspot

The Sweet Spot groups the original color and five complimentary colors.



67, 30.969, 9.540



93, 9.473, 6.354



67, 46.807, 320.861



49, 6.489, 6.506



0, 0.000, 0.000



53, 0.007, 296.813

Same Dimension

The Same Dimension uses a secret algorithm to generate beautiful new colors.



67, 30.969, 9.540



73, 42.972, 10.856



72, 25.432, 51.344



43, 4.750, 6.285



36, 70.765, 31.280



5, 23.727, 12.877

Inverse Universe

The Inverse Universe completely reimagines the original color for something new.



67, 30.969, 9.540



73, 42.972, 10.856



76, 20.662, 237.600



43, 4.750, 6.285



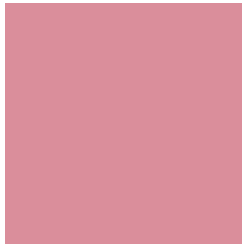
36, 70.765, 31.280



5, 23.727, 12.877

Previews

White Background



This preview shows how the CIELCh color 67, 30.972, 9.537 looks on a white background.

Color Contrast Check

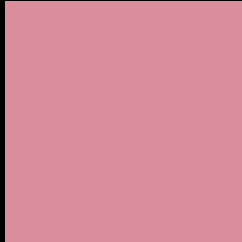
Large Text (above 18pt) WCAG AA × Fail

Any Text WCAG AA × Fail

Large Text (above 18pt) WCAG AAA × Fail

Any Text WCAG AAA × Fail

Black Background



This preview shows how the CIE LCh color 67, 30.972, 9.537 looks on a black background.

Color Contrast Check

Large Text (above 18pt) WCAG AA ✓ Pass

Any Text WCAG AA ✓ Pass

Large Text (above 18pt) WCAG AAA ✓ Pass

Any Text WCAG AAA ✓ Pass

If you want to check with other color combinations, try the [Color Contrast Checker](#).

CIELCh 67, 30.972, 9.537

Background



This preview shows how black text looks on a background with the CIELCh color 67, 30.972, 9.537.



This preview shows how white text looks on a background with the CIELCh color 67, 30.972, 9.537.

Color Blindness Simulation

Color vision deficiency is a very complex topic, and I could not describe the different causes any better than Wikipedia does, so if you want to learn more, you should check out their [article about color blindness](#).

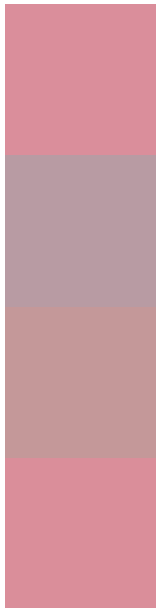
Dichromacy





Tritanopia
67, 30.901, 11.543

Trichromacy



Original Color
67, 30.972, 9.537

Protanomaly
67, 12.064, 359.174

Deuteranomaly
67, 17.574, 19.289

Tritanomaly
67, 30.932, 10.539

Monochromacy



Original Color
67, 30.972, 9.537

Achromatopsia
68, 0.008, 296.813

Achromatomaly
67, 11.223, 6.305

CSS Examples

Text

The CSS property to change the color of the text to CIELCh 67, 30.972, 9.537 is called "color". The color property can be set on classes, ids or directly on the HTML element.

This example shows how text in the color `rgb(218, 142, 155)` looks like.

```
.text, #text, p{  
    color:rgb(218, 142, 155)  
}
```

If you want to add a text shadow in that color use the text-shadow property, you can generate a text shadow directly with our [CSS Text Shadow Generator](#).

Here you see how black text with a 4 pixel rgb(218, 142, 155) colored shadow looks like.

```
.shadow{ text-shadow: 4px 4px 2px rgb(218, 142, 155) }
```

Border

The CSS property to change the border of an element to CIELCh 67, 30.972, 9.537 is called "border". The border property can be set on classes, ids or directly on the HTML element.

This example shows the color as border, it can be applied via the CSS property "border" or "border-color".

```
.border, #border, table{ border:4px solid rgb(218, 142, 155) }
```

If only the border color should be changed use the property border-color.

```
.border{ border-color:rgb(218, 142, 155) }
```

If you want to add a box shadow in that color use:

Here you see how a box with a 4 pixel rgb(218, 142, 155) colored shadow looks like.

```
.boxshadow{ -moz-box-shadow:4px 4px 4px  
4px rgb(218, 142, 155); -webkit-box-  
shadow:4px 4px 4px 4px rgb(218, 142, 155);  
box-shadow:4px 4px 4px 4px rgb(218, 142,  
155) }
```

Background

The CSS property to change the background color of an element to CIELCh 67, 30.972, 9.537 is called "background". The background property can be set on classes, ids or directly on the HTML element.

```
.background, #background, body{  
background: rgb(218, 142, 155) }
```

If only the background color should be changed can be used:

```
.background{ background-color: rgb(218,  
142, 155) }
```

This example shows the color as background, it is applied via the CSS property "background".

To optimize and compress your CSS code, you can use our [online CSS compressor and optimizer](#) based on csstidy. If you want to create a linear or radial gradient as background or border, check our [CSS Gradient Generator](#).

Hey! You found this booklet interesting? Support Converting Colors with the new Membership Option!

The pro membership hides all ads, plus gives you double the colors in the color bucket, and more awesome pro features!

[Learn more, Memberships starting at \\$2.50/m!](#)

**Follow me
on Twitter!**

@ConvertingColor