

Converting Colors

CIELCh(67, 35.933, 5.980)

Have a look what the booklet for
CIELCh(67, 35.933, 5.980) contains.

CIELCh(67, 35.800, 5.753)	3
<i>Conversions</i>	4
<i>Details</i>	6
<i>Harmonies</i>	11
<i>Previews</i>	20
<i>Color Blindness Simulation</i>	23
<i>CSS Examples</i>	26

Color

CIELCh(67, 35.800, 5.753)

Conversions

Conversions Part 1

Format	Color
Hex	E18A9E
RGB	225, 138, 158
RGB Percent	88%, 54%, 62%
CMY	0.1178, 0.4590, 0.3806
CMYK	0.00, 0.39, 0.30, 0.12
HSL	346°, 59%, 71%
HSV	346°, 39%, 88%
XYZ	46.2871, 36.6320, 36.9600
YIQ	166.2930, 45.4320, 24.6640

Conversions

Conversions Part 2

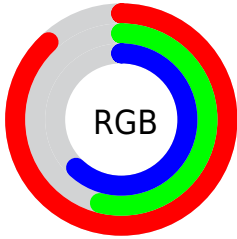
Format	Color
R_{YB}	225, 138, 158
Decimal	14781086
CIE _{Lab}	67.00, 35.62, 3.59
CIE _{LCh}	67, 35.800, 5.753
Yxy	36.6320, 0.3861, 0.3056
Android (android.graphics.Color)	4292971166 (0xFFE18A9E)
YUV	166.2930, -4.0884, 51.4860
Hunter-Lab	60.5244, 30.5934, 6.1609

Details

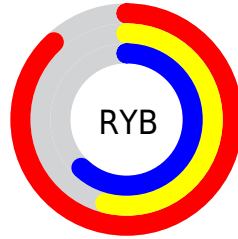
The CIELCh color $67, 35.800, 5.753$ is a light color, and the websafe version is hex FF9999 . A complement of this color would be $84, 30.814, 177.171$, and the grayscale version is $68, 0.008, 296.813$.

A 20% lighter version of the original color is $84, 25.159, 356.978$, and $47, 36.089, 5.541$ is the 20% darker color. If you saturate the color by 10%, you get $62, 45.494, 7.689$, and if you desaturate by 10%, it is $72, 26.104, 4.186$.

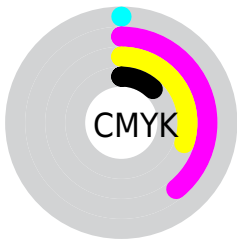
Distribution



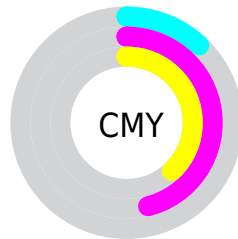
- Red (88%)
- Green (54%)
- Blue (62%)



- Red (88%)
- Yellow (54%)
- Blue (62%)



- Cyan (0%)
- Magenta (39%)
- Yellow (30%)
- Black (12%)



- Cyan (12%)
- Magenta (46%)
- Yellow (38%)

Brightness & Saturation Gradients

These gradients show how the CIELCh color 67, 35.800, 5.753 changes by changing the brightness by 10 percent. The first figure shows a shift by +10% for each color and the second figure -10%.

Similar to the brightness gradients but the following saturation gradients show a change of the CIELCh color 67, 35.800, 5.753 by changing the saturation by 10% instead.

67, 35.800, 5.753

67, 35.800, 5.753

100, 35.800, 5.753

57, 35.800, 5.753

87, 35.800, 5.753

47, 35.800, 5.753

97, 35.800, 5.753

37, 35.800, 5.753

27, 35.800, 5.753

17, 35.800, 5.753

7, 35.800, 5.753

0, 35.800, 5.753

67, 35.800, 5.753

67, 35.800, 5.753

62, 45.494, 7.689

72, 26.104, 4.186

■ 57, 54.866, 10.112

■ 78, 16.643, 2.880

■ 53, 63.514, 13.183

■ 84, 7.546, 1.750

■ 50, 71.077, 17.059

■ 90, 1.123, 181.375

■ 48, 77.401, 21.814

■ 96, 9.347, 180.131

■ 47, 82.731, 27.218

■ 98, 10.187,
198.827

■ 47, 83.447, 27.910

Harmonies

Complementary

The Complementary color scheme is a pair of colors which are on the opposite of each other on the color wheel.



67, 35.800, 5.753



84, 30.814, 177.171

Rectangle

The Rectangle color scheme consists of four colors that form a rectangle on the color wheel.



67, 35.800, 5.753



67, 35.800, 55.753



67, 35.800, 185.753



67, 35.800, 235.753

Sweetspot

The Sweet Spot groups the original color and five complimentary colors.



67, 35.797, 5.756



92, 11.659, 2.124



67, 52.688, 319.477



48, 7.758, 2.270



0, 0.000, 0.000



53, 0.007, 296.813

Same Dimension

The Same Dimension uses a secret algorithm to generate beautiful new colors.



67, 35.797, 5.756



71, 47.527, 7.196



72, 29.866, 45.964



44, 4.942, 1.835



37, 68.909, 26.908



6, 25.285, 11.172

Inverse Universe

The Inverse Universe completely reimagines the original color for something new.



67, 35.797, 5.756



71, 47.527, 7.196



78, 23.053, 231.084



44, 4.942, 1.835



37, 68.909, 26.908



6, 25.285, 11.172

Previews

White Background



This preview shows how the CIELCh color 67, 35.800, 5.753 looks on a white background.

Color Contrast Check

Large Text (above 18pt) WCAG AA × Fail

Any Text WCAG AA × Fail

Large Text (above 18pt) WCAG AAA × Fail

Any Text WCAG AAA × Fail

Black Background



This preview shows how the CIELCh color 67, 35.800, 5.753 looks on a black background.

Color Contrast Check

Large Text (above 18pt) WCAG AA ✓ Pass

Any Text WCAG AA ✓ Pass

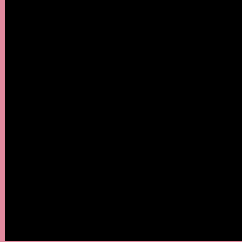
Large Text (above 18pt) WCAG AAA ✓ Pass

Any Text WCAG AAA ✓ Pass

If you want to check with other color combinations, try the [Color Contrast Checker](#).

CIELCh 67, 35.800, 5.753

Background



This preview shows how black text looks on a background with the CIELCh color 67, 35.800, 5.753.



This preview shows how white text looks on a background with the CIELCh color 67, 35.800, 5.753.

Color Blindness Simulation

Color vision deficiency is a very complex topic, and I could not describe the different causes any better than Wikipedia does, so if you want to learn more, you should check out their [article about color blindness](#).

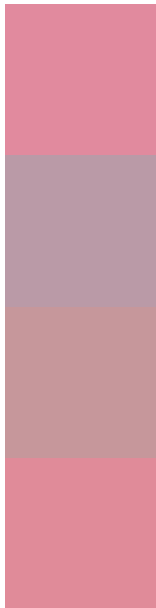
Dichromacy





Tritanopia
67, 34.617, 13.235

Trichromacy



Original Color
67, 35.800, 5.753

Protanomaly
67, 14.230, 350.617

Deuteranomaly
67, 18.798, 14.563

Tritanomaly
67, 34.664, 10.545

Monochromacy



Original Color
67, 35.800, 5.753

Achromatopsia
68, 0.008, 296.813

Achromatomaly
67, 12.631, 2.910

CSS Examples

Text

The CSS property to change the color of the text to CIELCh 67, 35.800, 5.753 is called "color". The color property can be set on classes, ids or directly on the HTML element.

This example shows how text in the color `rgb(225, 138, 158)` looks like.

```
.text, #text, p{  
    color:rgb(225, 138, 158)  
}
```

If you want to add a text shadow in that color use the text-shadow property, you can generate a text shadow directly with our [CSS Text Shadow Generator](#).

Here you see how black text with a 4 pixel rgb(225, 138, 158) colored shadow looks like.

```
.shadow{ text-shadow: 4px 4px 2px rgb(225, 138, 158) }
```

Border

The CSS property to change the border of an element to CIELCh 67, 35.800, 5.753 is called "border". The border property can be set on classes, ids or directly on the HTML element.

This example shows the color as border, it can be applied via the CSS property "border" or "border-color".

```
.border, #border, table{ border:4px solid rgb(225, 138, 158) }
```

If only the border color should be changed use the property `border-color`.

```
.border{ border-color:rgb(225, 138, 158) }
```

If you want to add a box shadow in that color use:

Here you see how a box with a 4 pixel `rgb(225, 138, 158)` colored shadow looks like.

```
.boxshadow{ -moz-box-shadow:4px 4px 4px  
4px rgb(225, 138, 158); -webkit-box-  
shadow:4px 4px 4px 4px rgb(225, 138, 158);  
box-shadow:4px 4px 4px 4px rgb(225, 138,  
158) }
```

Background

The CSS property to change the background color of an element to CIELCh 67, 35.800, 5.753 is called "background". The background property can be set on classes, ids or directly on the HTML element.

```
.background, #background, body{  
background: rgb(225, 138, 158) }
```

If only the background color should be changed can be used:

```
.background{ background-color: rgb(225,  
138, 158) }
```

This example shows the color as background, it is applied via the CSS property "background".

To optimize and compress your CSS code, you can use our [online CSS compressor and optimizer](#) based on csstidy. If you want to create a linear or radial gradient as background or border, check our [CSS Gradient Generator](#).

Hey! You found this booklet interesting? Support Converting Colors with the new Membership Option!

The pro membership hides all ads, plus gives you double the colors in the color bucket, and more awesome pro features!

[Learn more, Memberships starting at \\$2.50/m!](#)

**Follow me
on Twitter!**

@ConvertingColor