

Converting Colors

CIELCh(67, 50.947, 16.588)

Have a look what the booklet for
CIELCh(67, 50.947, 16.588) contains.

CIELCh(67, 50.766, 16.893)	3
<i>Conversions</i>	4
<i>Details</i>	6
<i>Harmonies</i>	11
<i>Previews</i>	20
<i>Color Blindness Simulation</i>	23
<i>CSS Examples</i>	26

Color

CIELCh(67, 50.766, 16.893)

Conversions

Conversions Part 1

Format	Color
Hex	F97D8B
RGB	249, 125, 139
RGB Percent	98%, 49%, 55%
CMY	0.0239, 0.5101, 0.4552
CMYK	0.00, 0.50, 0.44, 0.02
HSL	353°, 91%, 73%
HSV	353°, 50%, 98%
XYZ	51.0127, 36.6320, 28.7789
YIQ	163.6720, 69.4100, 30.6420

Conversions

Conversions Part 2

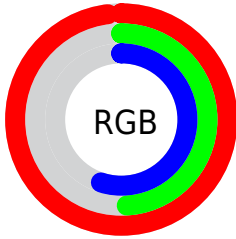
Format	Color
R_{YB}	249, 125, 139
Decimal	16350603
CIE Lab	67.00, 48.58, 14.75
CIE LCh	67, 50.766, 16.893
Yxy	36.6320, 0.4382, 0.3146
Android (android.graphics.Color)	4294540683 (0xFFF97D8B)
YUV	163.6720, -12.1633, 74.8327
Hunter-Lab	60.5244, 44.5302, 14.1751

Details

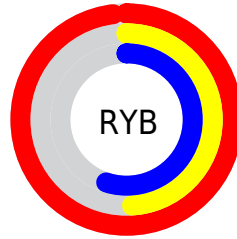
The CIELCh color **67, 50.766, 16.893** is a light color, and the websafe version is hex **FF9999**. A complement of this color would be **91, 38.219, 185.947**, and the grayscale version is **67, 0.008, 296.813**.

A 20% lighter version of the original color is **81, 29.288, 9.587**, and **47, 51.057, 16.959** is the 20% darker color. If you saturate the color by 10%, you get **62, 61.694, 19.489**, and if you desaturate by 10%, it is **73, 39.766, 14.862**.

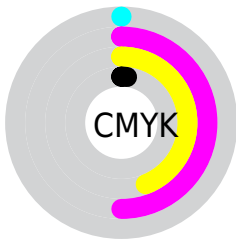
Distribution



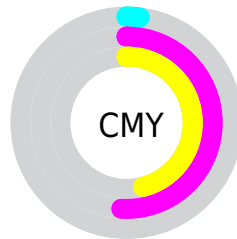
- Red (98%)
- Green (49%)
- Blue (55%)



- Red (98%)
- Yellow (49%)
- Blue (55%)



- Cyan (0%)
- Magenta (50%)
- Yellow (44%)
- Black (2%)



- Cyan (2%)
- Magenta (51%)
- Yellow (46%)

Brightness & Saturation Gradients

These gradients show how the CIELCh color 67, 50.766, 16.893 changes by changing the brightness by 10 percent. The first figure shows a shift by +10% for each color and the second figure -10%.

Similar to the brightness gradients but the following saturation gradients show a change of the CIELCh color 67, 50.766, 16.893 by changing the saturation by 10% instead.

67, 50.766, 16.893

67, 50.766, 16.893

100, 50.766,
16.893

57, 50.766, 16.893

87, 50.766, 16.893

47, 50.766, 16.893

97, 50.766, 16.893

37, 50.766, 16.893

27, 50.766, 16.893

17, 50.766, 16.893

7, 50.766, 16.893

0, 50.766, 16.893

67, 50.766, 16.893

67, 50.766, 16.893

62, 61.694, 19.489

73, 39.766, 14.862

■ 58, 72.175, 22.778

■ 79, 29.015, 13.255

■ 55, 81.840, 26.823

■ 85, 18.717, 11.963

■ 53, 90.390, 31.458

■ 91, 8.978, 10.885

■ 52, 97.451, 35.952

■ 98, 0.166, 193.892

■ 52, 97.572, 36.023

■ 100, 2.112,
199.585

Harmonies

Complementary

The Complementary color scheme is a pair of colors which are on the opposite of each other on the color wheel.



67, 50.766, 16.893



91, 38.219, 185.947

Rectangle

The Rectangle color scheme consists of four colors that form a rectangle on the color wheel.



67, 50.766, 16.893



67, 50.766, 66.893



67, 50.766, 196.893



67, 50.766, 246.893

Sweetspot

The Sweet Spot groups the original color and five complimentary colors.



67, 50.763, 16.896



90, 14.237, 11.427



69, 74.407, 323.505



46, 9.778, 11.657



0, 0.000, 0.000



53, 0.007, 296.813

Same Dimension

The Same Dimension uses a secret algorithm to generate beautiful new colors.



67, 50.763, 16.896



63, 63.127, 19.568



77, 42.314, 57.331



49, 5.214, 10.853



39, 78.523, 35.233



9, 31.443, 21.550

Inverse Universe

The Inverse Universe completely reimagines the original color for something new.



67, 50.763, 16.896



63, 63.127, 19.568



78, 32.588, 250.294



49, 5.214, 10.853



39, 78.523, 35.233



9, 31.443, 21.550

Previews

White Background



This preview shows how the CIELCh color 67, 50.766, 16.893 looks on a white background.

Color Contrast Check

Large Text (above 18pt) WCAG AA × Fail

Any Text WCAG AA × Fail

Large Text (above 18pt) WCAG AAA × Fail

Any Text WCAG AAA × Fail

Black Background



This preview shows how the CIELCh color 67, 50.766, 16.893 looks on a black background.

Color Contrast Check

Large Text (above 18pt) WCAG AA ✓ Pass

Any Text WCAG AA ✓ Pass

Large Text (above 18pt) WCAG AAA ✓ Pass

Any Text WCAG AAA ✓ Pass

If you want to check with other color combinations, try the [Color Contrast Checker](#).

CIELCh 67, 50.766, 16.893

Background



This preview shows how black text looks on a background with the CIELCh color 67, 50.766, 16.893.

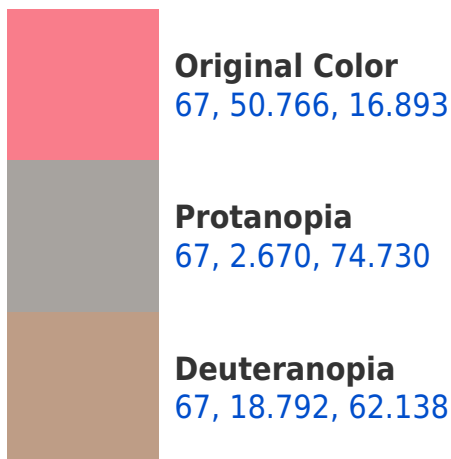


This preview shows how white text looks on a background with the CIELCh color 67, 50.766, 16.893.

Color Blindness Simulation

Color vision deficiency is a very complex topic, and I could not describe the different causes any better than Wikipedia does, so if you want to learn more, you should check out their [article about color blindness](#).

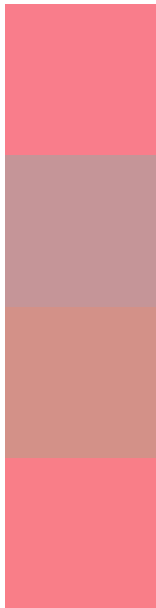
Dichromacy





Tritanopia
67, 50.688, 19.780

Trichromacy



Original Color
67, 50.766, 16.893

Protanomaly
66, 19.250, 16.400

Deuteranomaly
66, 28.096, 31.978

Tritanomaly
67, 50.601, 19.175

Monochromacy



Original Color
67, 50.766, 16.893

Achromatopsia
67, 0.008, 296.813

Achromatomaly
66, 18.042, 12.454

CSS Examples

Text

The CSS property to change the color of the text to CIELCh 67, 50.766, 16.893 is called "color". The color property can be set on classes, ids or directly on the HTML element.

This example shows how text in the color `rgb(249, 125, 139)` looks like.

```
.text, #text, p{  
    color:rgb(249, 125, 139)  
}
```

If you want to add a text shadow in that color use the text-shadow property, you can generate a text shadow directly with our [CSS Text Shadow Generator](#).

Here you see how black text with a 4 pixel rgb(249, 125, 139) colored shadow looks like.

```
.shadow{ text-shadow: 4px 4px 2px rgb(249, 125, 139) }
```

Border

The CSS property to change the border of an element to CIELCh 67, 50.766, 16.893 is called "border". The border property can be set on classes, ids or directly on the HTML element.

This example shows the color as border, it can be applied via the CSS property "border" or "border-color".

```
.border, #border, table{ border:4px solid rgb(249, 125, 139) }
```

If only the border color should be changed use the property `border-color`.

```
.border{ border-color:rgb(249, 125, 139) }
```

If you want to add a box shadow in that color use:

Here you see how a box with a 4 pixel `rgb(249, 125, 139)` colored shadow looks like.

```
.boxshadow{ -moz-box-shadow:4px 4px 4px  
4px rgb(249, 125, 139); -webkit-box-  
shadow:4px 4px 4px 4px rgb(249, 125, 139);  
box-shadow:4px 4px 4px 4px rgb(249, 125,  
139) }
```

Background

The CSS property to change the background color of an element to CIELCh 67, 50.766, 16.893 is called "background". The background property can be set on classes, ids or directly on the HTML element.

```
.background, #background, body{  
background: rgb(249, 125, 139) }
```

If only the background color should be changed can be used:

```
.background{ background-color: rgb(249,  
125, 139) }
```

This example shows the color as background, it is applied via the CSS property "background".

To optimize and compress your CSS code, you can use our [online CSS compressor and optimizer](#) based on csstidy. If you want to create a linear or radial gradient as background or border, check our [CSS Gradient Generator](#).

Hey! You found this booklet interesting? Support Converting Colors with the new Membership Option!

The pro membership hides all ads, plus gives you double the colors in the color bucket, and more awesome pro features!

[Learn more, Memberships starting at \\$2.50/m!](#)

**Follow me
on Twitter!**

@ConvertingColor