

Converting Colors

CIELCh(67, 51.450, 6.910)

Have a look what the booklet for
CIELCh(67, 51.450, 6.910) contains.

CIELCh(67, 51.491, 6.954)	3
<i>Conversions</i>	4
<i>Details</i>	6
<i>Harmonies</i>	11
<i>Previews</i>	20
<i>Color Blindness Simulation</i>	23
<i>CSS Examples</i>	26

Color

CIELCh(67, 51.491, 6.954)

Conversions

Conversions Part 1

Format	Color
Hex	F97B9A
RGB	249, 123, 154
RGB Percent	98%, 48%, 60%
CMY	0.0236, 0.5177, 0.3961
CMYK	0.00, 0.51, 0.38, 0.02
HSL	345°, 91%, 73%
HSV	345°, 51%, 98%
XYZ	51.9741, 36.6320, 34.8970
YIQ	164.2080, 65.1450, 36.3530

Conversions

Conversions Part 2

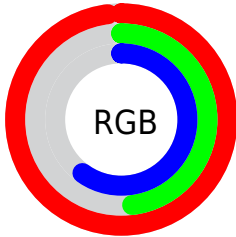
Format	Color
R_{YB}	249, 123, 154
Decimal	16350106
CIE _{Lab}	67.00, 51.11, 6.23
CIE _{LCh}	67, 51.491, 6.954
Yxy	36.6320, 0.4208, 0.2966
Android (android.graphics.Color)	4294540186 (0xFFFF97B9A)
YUV	164.2080, -5.0325, 74.3626
Hunter-Lab	60.5244, 47.3657, 8.1817

Details

The CIELCh color **67, 51.491, 6.954** is a light color, and the websafe version is hex **FF6699**. A complement of this color would be **90, 42.634, 174.433**, and the grayscale version is **67, 0.008, 296.813**.

A 20% lighter version of the original color is **81, 32.460, 353.253**, and **47, 51.392, 7.121** is the 20% darker color. If you saturate the color by 10%, you get **62, 61.433, 9.496**, and if you desaturate by 10%, it is **72, 41.047, 4.936**.

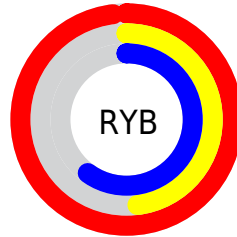
Distribution



Red (98%)

Green (48%)

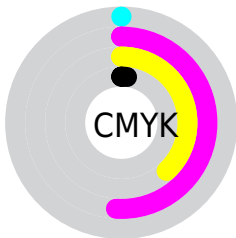
Blue (60%)



Red (98%)

Yellow (48%)

Blue (60%)

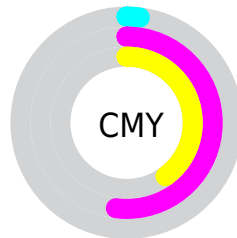


Cyan (0%)

Magenta (51%)

Yellow (38%)

Black (2%)



Cyan (2%)

Magenta (52%)

Yellow (40%)

Brightness & Saturation Gradients

These gradients show how the CIELCh color 67, 51.491, 6.954 changes by changing the brightness by 10 percent. The first figure shows a shift by +10% for each color and the second figure -10%.

Similar to the brightness gradients but the following saturation gradients show a change of the CIELCh color 67, 51.491, 6.954 by changing the saturation by 10% instead.

 67, 51.491, 6.954  67, 51.491, 6.954

 100, 51.491, 6.954  57, 51.491, 6.954

 87, 51.491, 6.954  47, 51.491, 6.954

 97, 51.491, 6.954  37, 51.491, 6.954

 27, 51.491, 6.954

 17, 51.491, 6.954

 7, 51.491, 6.954

 0, 51.491, 6.954

 67, 51.491, 6.954  67, 51.491, 6.954

 62, 61.433, 9.496  72, 41.047, 4.936

■ 58, 70.432, 12.720

■ 78, 30.505, 3.300

■ 55, 78.115, 16.787

■ 85, 20.143, 1.944

■ 53, 84.395, 21.753

■ 91, 10.134, 0.782

■ 52, 89.422, 26.953

■ 98, 0.566, 358.835

■ 100, 2.086,
199.590

Harmonies

Complementary

The Complementary color scheme is a pair of colors which are on the opposite of each other on the color wheel.



67, 51.491, 6.954



90, 42.634, 174.433

Rectangle

The Rectangle color scheme consists of four colors that form a rectangle on the color wheel.



67, 51.491, 6.954



67, 51.491, 56.954



67, 51.491, 186.954



67, 51.491, 236.954

Sweetspot

The Sweet Spot groups the original color and five complimentary colors.



67, 51.488, 6.956



90, 14.769, 1.277



66, 74.088, 319.407



47, 10.125, 1.523



0, 0.000, 0.000



53, 0.007, 296.813

Same Dimension

The Same Dimension uses a secret algorithm to generate beautiful new colors.



67, 51.488, 6.956



63, 63.015, 9.632



73, 44.899, 44.343



49, 5.436, 0.660



40, 72.044, 25.899



9, 30.777, 15.360

Inverse Universe

The Inverse Universe completely reimagines the original color for something new.



67, 51.488, 6.956



63, 63.015, 9.632



82, 31.072, 230.644



49, 5.436, 0.660



40, 72.044, 25.899



9, 30.777, 15.360

Previews

White Background



This preview shows how the CIELCh color 67, 51.491, 6.954 looks on a white background.

Color Contrast Check

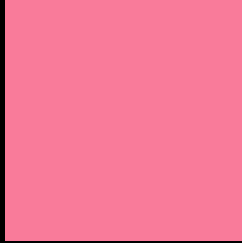
Large Text (above 18pt) WCAG AA × Fail

Any Text WCAG AA × Fail

Large Text (above 18pt) WCAG AAA × Fail

Any Text WCAG AAA × Fail

Black Background



This preview shows how the CIE LCh color 67, 51.491, 6.954 looks on a black background.

Color Contrast Check

Large Text (above 18pt) WCAG AA ✓ Pass

Any Text WCAG AA ✓ Pass

Large Text (above 18pt) WCAG AAA ✓ Pass

Any Text WCAG AAA ✓ Pass

If you want to check with other color combinations, try the [Color Contrast Checker](#).

CIELCh 67, 51.491, 6.954

Background



This preview shows how black text looks on a background with the CIELCh color 67, 51.491, 6.954.

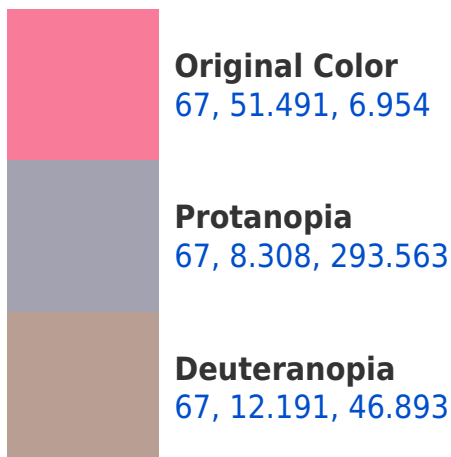


This preview shows how white text looks on a background with the CIELCh color 67, 51.491, 6.954.

Color Blindness Simulation

Color vision deficiency is a very complex topic, and I could not describe the different causes any better than Wikipedia does, so if you want to learn more, you should check out their [article about color blindness](#).

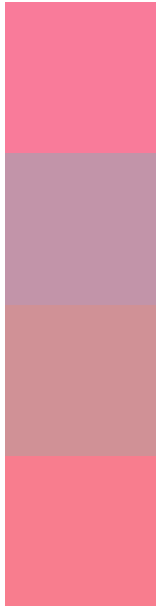
Dichromacy





Tritanopia
67, 49.882, 19.595

Trichromacy



Original Color
67, 51.491, 6.954

Protanomaly
66, 21.052, 348.264

Deuteranomaly
66, 25.490, 15.863

Tritanomaly
67, 50.224, 14.927

Monochromacy



Original Color
67, 51.491, 6.954

Achromatopsia
67, 0.008, 296.813

Achromatomaly
66, 18.975, 2.784

CSS Examples

Text

The CSS property to change the color of the text to CIELCh 67, 51.491, 6.954 is called "color". The color property can be set on classes, ids or directly on the HTML element.

This example shows how text in the color `rgb(249, 123, 154)` looks like.

```
.text, #text, p{  
    color:rgb(249, 123, 154)  
}
```

If you want to add a text shadow in that color use the text-shadow property, you can generate a text shadow directly with our [CSS Text Shadow Generator](#).

Here you see how black text with a 4 pixel rgb(249, 123, 154) colored shadow looks like.

```
.shadow{ text-shadow: 4px 4px 2px rgb(249, 123, 154) }
```

Border

The CSS property to change the border of an element to CIELCh 67, 51.491, 6.954 is called "border". The border property can be set on classes, ids or directly on the HTML element.

This example shows the color as border, it can be applied via the CSS property "border" or "border-color".

```
.border, #border, table{ border:4px solid rgb(249, 123, 154) }
```

If only the border color should be changed use the property `border-color`.

```
.border{ border-color:rgb(249, 123, 154) }
```

If you want to add a box shadow in that color use:

Here you see how a box with a 4 pixel `rgb(249, 123, 154)` colored shadow looks like.

```
.boxshadow{ -moz-box-shadow:4px 4px 4px  
4px rgb(249, 123, 154); -webkit-box-  
shadow:4px 4px 4px 4px rgb(249, 123, 154);  
box-shadow:4px 4px 4px 4px rgb(249, 123,  
154) }
```

Background

The CSS property to change the background color of an element to CIELCh 67, 51.491, 6.954 is called "background". The background property can be set on classes, ids or directly on the HTML element.

```
.background, #background, body{  
background: rgb(249, 123, 154) }
```

If only the background color should be changed can be used:

```
.background{ background-color: rgb(249,  
123, 154) }
```

This example shows the color as background, it is applied via the CSS property "background".

To optimize and compress your CSS code, you can use our [online CSS compressor and optimizer](#) based on csstidy. If you want to create a linear or radial gradient as background or border, check our [CSS Gradient Generator](#).

Hey! You found this booklet interesting? Support Converting Colors with the new Membership Option!

The pro membership hides all ads, plus gives you double the colors in the color bucket, and more awesome pro features!

[Learn more, Memberships starting at \\$2.50/m!](#)

**Follow me
on Twitter!**

@ConvertingColor