

Converting Colors

CIELCh(67, 54.540, 8.480)

Have a look what the booklet for
CIELCh(67, 54.540, 8.480) contains.

CIELCh(67, 54.504, 8.583)	3
<i>Conversions</i>	4
<i>Details</i>	6
<i>Harmonies</i>	11
<i>Previews</i>	20
<i>Color Blindness Simulation</i>	23
<i>CSS Examples</i>	26

Color

CIELCh(67, 54.504, 8.583)

Conversions

Conversions Part 1

Format	Color
Hex	FE7897
RGB	254, 120, 151
RGB Percent	100%, 47%, 59%
CMY	0.0049, 0.5302, 0.4087
CMYK	0.00, 0.53, 0.41, 0.00
HSL	346°, 98%, 73%
HSV	346°, 53%, 100%
XYZ	53.0420, 36.6320, 33.4637
YIQ	163.6000, 69.9130, 38.0490

Conversions

Conversions Part 2

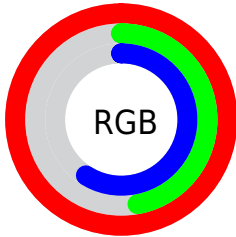
Format	Color
R _Y B	254, 120, 151
Decimal	16677015
CIE Lab	67.00, 53.89, 8.13
CIE LCh	67, 54.504, 8.583
Yxy	36.6320, 0.4308, 0.2975
Android (android.graphics.Color)	4294867095 (0xFFFE7897)
YUV	163.6000, -6.2118, 79.2808
Hunter-Lab	60.5244, 50.5152, 9.5858

Details

The CIELCh color **67, 54.504, 8.583** is a light color, and the websafe version is hex **FF6699**. A complement of this color would be **92, 44.269, 175.290**, and the grayscale version is **67, 0.008, 296.813**.

A 20% lighter version of the original color is **80, 32.969, 354.843**, and **47, 54.310, 8.757** is the 20% darker color. If you saturate the color by 10%, you get **62, 64.519, 11.296**, and if you desaturate by 10%, it is **72, 43.922, 6.440**.

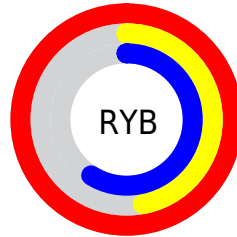
Distribution



Red (100%)

Green (47%)

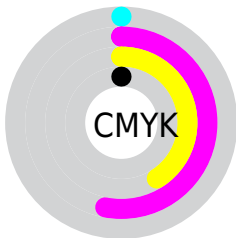
Blue (59%)



Red (100%)

Yellow (47%)

Blue (59%)

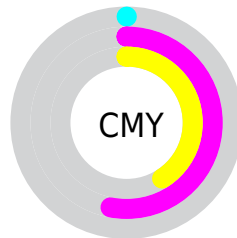


Cyan (0%)

Magenta (53%)

Yellow (41%)

Black (0%)



Cyan (0%)

Magenta (53%)

Yellow (41%)

Brightness & Saturation Gradients

These gradients show how the CIELCh color 67, 54.504, 8.583 changes by changing the brightness by 10 percent. The first figure shows a shift by +10% for each color and the second figure -10%.

Similar to the brightness gradients but the following saturation gradients show a change of the CIELCh color 67, 54.504, 8.583 by changing the saturation by 10% instead.

 67, 54.504, 8.583

 67, 54.504, 8.583

 100, 54.504, 8.583

 57, 54.504, 8.583

 87, 54.504, 8.583

 47, 54.504, 8.583

 97, 54.504, 8.583

 37, 54.504, 8.583

 27, 54.504, 8.583

 17, 54.504, 8.583

 7, 54.504, 8.583

 0, 54.504, 8.583

 67, 54.504, 8.583

 67, 54.504, 8.583

 62, 64.519, 11.296

 72, 43.922, 6.440

■ 58, 73.530, 14.737

■ 78, 33.197, 4.714

■ 56, 81.213, 19.048

■ 85, 22.630, 3.296

■ 54, 87.557, 24.216

■ 91, 12.413, 2.097

■ 53, 91.612, 28.196

■ 98, 2.647, 0.916

100, 0.433,
200.909

Harmonies

Complementary

The Complementary color scheme is a pair of colors which are on the opposite of each other on the color wheel.



67, 54.504, 8.583



92, 44.269, 175.290

Rectangle

The Rectangle color scheme consists of four colors that form a rectangle on the color wheel.



67, 54.504, 8.583



67, 54.504, 58.583



67, 54.504, 188.583



67, 54.504, 238.583

Sweetspot

The Sweet Spot groups the original color and five complimentary colors.



67, 54.501, 8.585



89, 15.705, 2.463



67, 78.432, 319.995



46, 10.654, 2.707



0, 0.000, 0.000



53, 0.007, 296.813

Same Dimension

The Same Dimension uses a secret algorithm to generate beautiful new colors.



67, 54.501, 8.585



62, 64.972, 11.364



74, 47.618, 45.890



50, 5.494, 1.733



40, 73.450, 27.150



10, 31.802, 17.066

Inverse Universe

The Inverse Universe completely reimagines the original color for something new.



67, 54.501, 8.585



62, 64.972, 11.364



83, 32.621, 233.664



50, 5.494, 1.733



40, 73.450, 27.150



10, 31.802, 17.066

Previews

White Background



This preview shows how the CIELCh color 67, 54.504, 8.583 looks on a white background.

Color Contrast Check

Large Text (above 18pt) WCAG AA × Fail

Any Text WCAG AA × Fail

Large Text (above 18pt) WCAG AAA × Fail

Any Text WCAG AAA × Fail

Black Background



This preview shows how the CIELCh color 67, 54.504, 8.583 looks on a black background.

Color Contrast Check

Large Text (above 18pt) WCAG AA ✓ Pass

Any Text WCAG AA ✓ Pass

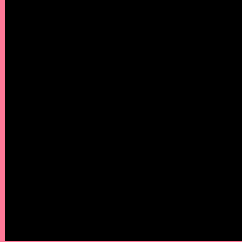
Large Text (above 18pt) WCAG AAA ✓ Pass

Any Text WCAG AAA ✓ Pass

If you want to check with other color combinations, try the [Color Contrast Checker](#).

CIELCh 67, 54.504, 8.583

Background



This preview shows how black text looks on a background with the CIELCh color 67, 54.504, 8.583.

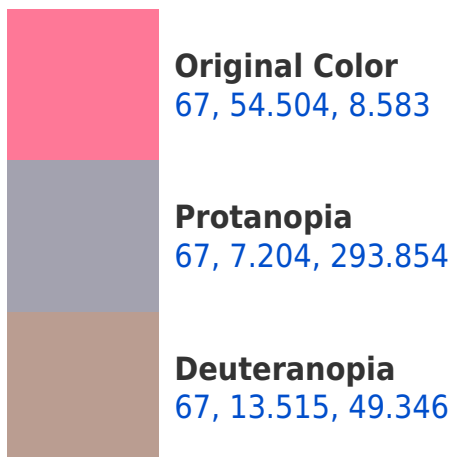


This preview shows how white text looks on a background with the CIELCh color 67, 54.504, 8.583.

Color Blindness Simulation

Color vision deficiency is a very complex topic, and I could not describe the different causes any better than Wikipedia does, so if you want to learn more, you should check out their [article about color blindness](#).

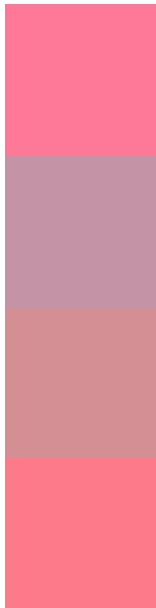
Dichromacy





Tritanopia
67, 53.281, 20.449

Trichromacy



Original Color
67, 54.504, 8.583

Protanomaly
66, 21.568, 352.670

Deuteranomaly
66, 27.638, 17.717

Tritanomaly
67, 53.501, 16.093

Monochromacy



Original Color
67, 54.504, 8.583

Achromatopsia
67, 0.008, 296.813

Achromatomaly
66, 20.289, 2.544

CSS Examples

Text

The CSS property to change the color of the text to CIELCh 67, 54.504, 8.583 is called "color". The color property can be set on classes, ids or directly on the HTML element.

This example shows how text in the color `rgb(254, 120, 151)` looks like.

```
.text, #text, p{  
    color:rgb(254, 120, 151)  
}
```

If you want to add a text shadow in that color use the text-shadow property, you can generate a text shadow directly with our [CSS Text Shadow Generator](#).

Here you see how black text with a 4 pixel rgb(254, 120, 151) colored shadow looks like.

```
.shadow{ text-shadow: 4px 4px 2px rgb(254, 120, 151) }
```

Border

The CSS property to change the border of an element to CIELCh 67, 54.504, 8.583 is called "border". The border property can be set on classes, ids or directly on the HTML element.

This example shows the color as border, it can be applied via the CSS property "border" or "border-color".

```
.border, #border, table{ border:4px solid rgb(254, 120, 151) }
```

If only the border color should be changed use the property `border-color`.

```
.border{ border-color:rgb(254, 120, 151) }
```

If you want to add a box shadow in that color use:

Here you see how a box with a 4 pixel `rgb(254, 120, 151)` colored shadow looks like.

```
.boxshadow{ -moz-box-shadow:4px 4px 4px  
4px rgb(254, 120, 151); -webkit-box-  
shadow:4px 4px 4px 4px rgb(254, 120, 151);  
box-shadow:4px 4px 4px 4px rgb(254, 120,  
151) }
```

Background

The CSS property to change the background color of an element to CIELCh 67, 54.504, 8.583 is called "background". The background property can be set on classes, ids or directly on the HTML element.

```
.background, #background, body{  
background: rgb(254, 120, 151) }
```

If only the background color should be changed can be used:

```
.background{ background-color: rgb(254,  
120, 151) }
```

This example shows the color as background, it is applied via the CSS property "background".

To optimize and compress your CSS code, you can use our [online CSS compressor and optimizer](#) based on csstidy. If you want to create a linear or radial gradient as background or border, check our [CSS Gradient Generator](#).

Hey! You found this booklet interesting? Support Converting Colors with the new Membership Option!

The pro membership hides all ads, plus gives you double the colors in the color bucket, and more awesome pro features!

[Learn more, Memberships starting at \\$2.50/m!](#)

**Follow me
on Twitter!**

@ConvertingColor