

Converting Colors

CIELCh(67, 54.890, 10.576)

Have a look what the booklet for
CIELCh(67, 54.890, 10.576) contains.

CIELCh(67, 54.829, 11.026)	3
<i>Conversions</i>	4
<i>Details</i>	6
<i>Harmonies</i>	11
<i>Previews</i>	20
<i>Color Blindness Simulation</i>	23
<i>CSS Examples</i>	26

Color

CIELCh(67, 54.829, 11.026)

Conversions

Conversions Part 1

Format	Color
Hex	FF7893
RGB	255, 120, 147
RGB Percent	100%, 47%, 58%
CMY	0.0015, 0.5307, 0.4248
CMYK	0.00, 0.53, 0.42, 0.00
HSL	348°, 99%, 73%
HSV	348°, 53%, 100%
XYZ	53.0123, 36.6320, 31.7446
YIQ	163.4430, 71.7930, 37.0170

Conversions

Conversions Part 2

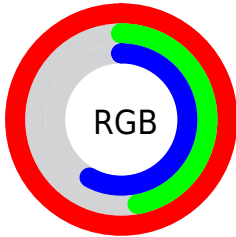
Format	Color
RYB	255, 120, 147
Decimal	16742547
CIELab	67.00, 53.82, 10.49
CIELCh	67, 54.829, 11.026
Yxy	36.6320, 0.4367, 0.3018
Android (android.graphics.Color)	4294932627 (0xFFFF7893)
YUV	163.4430, -8.1064, 80.2955
Hunter-Lab	60.5244, 50.4278, 11.2699

Details

The CIELCh color **67, 54.829, 11.026** is a light color, and the websafe version is hex **FF6699**. A complement of this color would be **92, 43.427, 177.830**, and the grayscale version is **67, 0.008, 296.813**.

A 20% lighter version of the original color is **80, 32.264, 358.304**, and **47, 54.695, 10.817** is the 20% darker color. If you saturate the color by 10%, you get **62, 65.082, 13.804**, and if you desaturate by 10%, it is **72, 44.097, 8.838**.

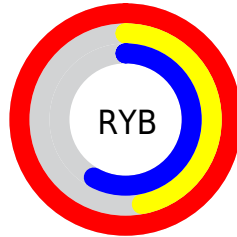
Distribution



Red (100%)

Green (47%)

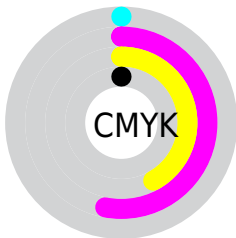
Blue (58%)



Red (100%)

Yellow (47%)

Blue (58%)

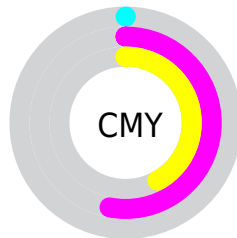


Cyan (0%)

Magenta (53%)

Yellow (42%)

Black (0%)



Cyan (0%)

Magenta (53%)

Yellow (42%)

Brightness & Saturation Gradients

These gradients show how the CIELCh color 67, 54.829, 11.026 changes by changing the brightness by 10 percent. The first figure shows a shift by +10% for each color and the second figure -10%.

Similar to the brightness gradients but the following saturation gradients show a change of the CIELCh color 67, 54.829, 11.026 by changing the saturation by 10% instead.

67, 54.829, 11.026

67, 54.829, 11.026

100, 54.829,
11.026

57, 54.829, 11.026

87, 54.829, 11.026

47, 54.829, 11.026

97, 54.829, 11.026

37, 54.829, 11.026

27, 54.829, 11.026

17, 54.829, 11.026

7, 54.829, 11.026

0, 54.829, 11.026

67, 54.829, 11.026

67, 54.829, 11.026

62, 65.082, 13.804

72, 44.097, 8.838

■ 58, 74.437, 17.323

■ 78, 33.293, 7.087

■ 56, 82.580, 21.698

■ 85, 22.706, 5.657

■ 54, 89.476, 26.853

■ 91, 12.517, 4.458

■ 53, 93.785, 30.603

■ 98, 2.816, 3.295

100, 0.135,
204.324

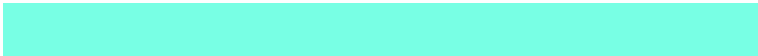
Harmonies

Complementary

The Complementary color scheme is a pair of colors which are on the opposite of each other on the color wheel.



67, 54.829, 11.026



92, 43.427, 177.830

Rectangle

The Rectangle color scheme consists of four colors that form a rectangle on the color wheel.



67, 54.829, 11.026



67, 54.829, 61.026



67, 54.829, 191.026



67, 54.829, 241.026

Sweetspot

The Sweet Spot groups the original color and five complimentary colors.



67, 54.826, 11.028



89, 15.542, 4.799



67, 79.089, 320.519



46, 10.548, 5.041



0, 0.000, 0.000



53, 0.007, 296.813

Same Dimension

The Same Dimension uses a secret algorithm to generate beautiful new colors.



67, 54.826, 11.028



62, 66.144, 14.120



74, 47.634, 47.424



50, 5.429, 4.073



40, 74.938, 29.585



10, 31.983, 18.727

Inverse Universe

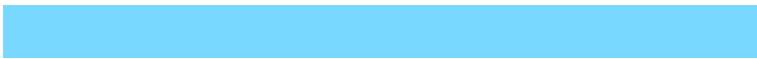
The Inverse Universe completely reimagines the original color for something new.



67, 54.826, 11.028



62, 66.144, 14.120



82, 32.932, 236.295



50, 5.429, 4.073



40, 74.938, 29.585



10, 31.983, 18.727

Previews

White Background



This preview shows how the CIELCh color 67, 54.829, 11.026 looks on a white background.

Color Contrast Check

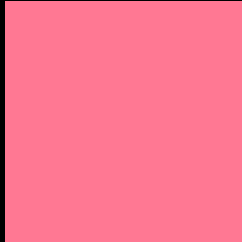
Large Text (above 18pt) WCAG AA × Fail

Any Text WCAG AA × Fail

Large Text (above 18pt) WCAG AAA × Fail

Any Text WCAG AAA × Fail

Black Background



This preview shows how the CIELCh color 67, 54.829, 11.026 looks on a black background.

Color Contrast Check

Large Text (above 18pt) WCAG AA ✓ Pass

Any Text WCAG AA ✓ Pass

Large Text (above 18pt) WCAG AAA ✓ Pass

Any Text WCAG AAA ✓ Pass

If you want to check with other color combinations, try the [Color Contrast Checker](#).

CIELCh 67, 54.829, 11.026

Background



This preview shows how black text looks on a background with the CIELCh color 67, 54.829, 11.026.

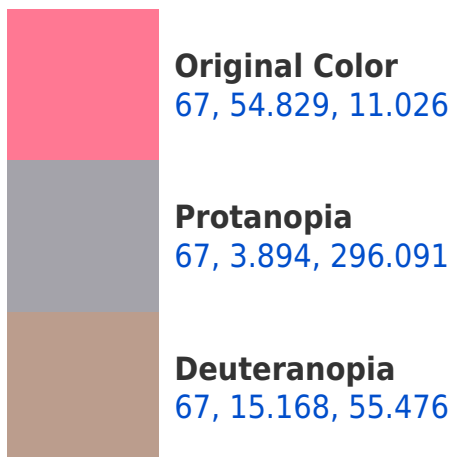


This preview shows how white text looks on a background with the CIELCh color 67, 54.829, 11.026.

Color Blindness Simulation

Color vision deficiency is a very complex topic, and I could not describe the different causes any better than Wikipedia does, so if you want to learn more, you should check out their [article about color blindness](#).

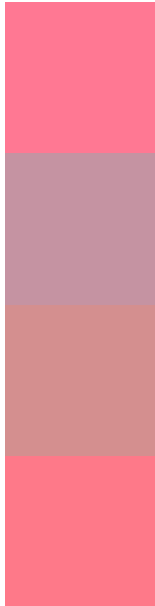
Dichromacy





Tritanopia
67, 54.144, 20.669

Trichromacy



Original Color
67, 54.829, 11.026

Protanomaly
66, 21.118, 358.637

Deuteranomaly
66, 28.284, 22.231

Tritanomaly
67, 54.397, 16.954

Monochromacy



Original Color
67, 54.829, 11.026

Achromatopsia
67, 0.008, 296.813

Achromatomaly
66, 20.051, 5.574

CSS Examples

Text

The CSS property to change the color of the text to CIELCh 67, 54.829, 11.026 is called "color". The color property can be set on classes, ids or directly on the HTML element.

This example shows how text in the color `rgb(255, 120, 147)` looks like.

```
.text, #text, p{  
    color:rgb(255, 120, 147)  
}
```

If you want to add a text shadow in that color use the text-shadow property, you can generate a text shadow directly with our [CSS Text Shadow Generator](#).

Here you see how black text with a 4 pixel rgb(255, 120, 147) colored shadow looks like.

```
.shadow{ text-shadow: 4px 4px 2px rgb(255, 120, 147) }
```

Border

The CSS property to change the border of an element to CIELCh 67, 54.829, 11.026 is called "border". The border property can be set on classes, ids or directly on the HTML element.

This example shows the color as border, it can be applied via the CSS property "border" or "border-color".

```
.border, #border, table{ border:4px solid rgb(255, 120, 147) }
```

If only the border color should be changed use the property `border-color`.

```
.border{ border-color:rgb(255, 120, 147) }
```

If you want to add a box shadow in that color use:

Here you see how a box with a 4 pixel `rgb(255, 120, 147)` colored shadow looks like.

```
.boxshadow{ -moz-box-shadow:4px 4px 4px  
4px rgb(255, 120, 147); -webkit-box-  
shadow:4px 4px 4px 4px rgb(255, 120, 147);  
box-shadow:4px 4px 4px 4px rgb(255, 120,  
147) }
```

Background

The CSS property to change the background color of an element to CIELCh 67, 54.829, 11.026 is called "background". The background property can be set on classes, ids or directly on the HTML element.

```
.background, #background, body{  
background: rgb(255, 120, 147) }
```

If only the background color should be changed can be used:

```
.background{ background-color: rgb(255,  
120, 147) }
```

This example shows the color as background, it is applied via the CSS property "background".

To optimize and compress your CSS code, you can use our [online CSS compressor and optimizer](#) based on csstidy. If you want to create a linear or radial gradient as background or border, check our [CSS Gradient Generator](#).

Hey! You found this booklet interesting? Support Converting Colors with the new Membership Option!

The pro membership hides all ads, plus gives you double the colors in the color bucket, and more awesome pro features!

[Learn more, Memberships starting at \\$2.50/m!](#)

**Follow me
on Twitter!**

@ConvertingColor