

Converting Colors

CIELCh(67, 55.358, 3.773)

Have a look what the booklet for
CIELCh(67, 55.358, 3.773) contains.

CIELCh(67, 55.338, 3.763)	3
<i>Conversions</i>	4
<i>Details</i>	6
<i>Harmonies</i>	11
<i>Previews</i>	20
<i>Color Blindness Simulation</i>	23
<i>CSS Examples</i>	26

Color

CIELCh(67, 55.338, 3.763)

Conversions

Conversions Part 1

Format	Color
Hex	FE779F
RGB	254, 119, 159
RGB Percent	100%, 47%, 62%
CMY	0.0052, 0.5344, 0.3775
CMYK	0.00, 0.53, 0.37, 0.01
HSL	342°, 98%, 73%
HSV	342°, 53%, 99%
XYZ	53.5559, 36.6320, 36.9256
YIQ	163.9250, 67.6200, 41.0600

Conversions

Conversions Part 2

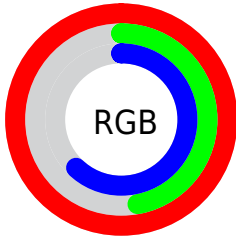
Format	Color
R _Y B	254, 119, 159
Decimal	16676767
CIE Lab	67.00, 55.22, 3.63
CIE LCh	67, 55.338, 3.763
Yxy	36.6320, 0.4213, 0.2882
Android (android.graphics.Color)	4294866847 (0xFFFE779F)
YUV	163.9250, -2.4280, 78.9958
Hunter-Lab	60.5244, 52.0307, 6.1945

Details

The CIELCh color **67, 55.338, 3.763** is a light color, and the websafe version is hex **FF6699**. A complement of this color would be **91, 47.039, 170.290**, and the grayscale version is **67, 0.008, 296.813**.

A 20% lighter version of the original color is **80, 35.579, 347.357**, and **47, 55.661, 3.633** is the 20% darker color. If you saturate the color by 10%, you get **62, 64.934, 6.343**, and if you desaturate by 10%, it is **72, 44.961, 1.712**.

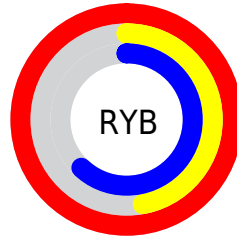
Distribution



Red (100%)

Green (47%)

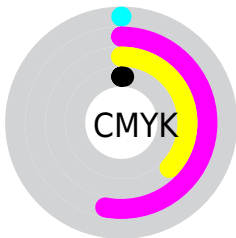
Blue (62%)



Red (100%)

Yellow (47%)

Blue (62%)

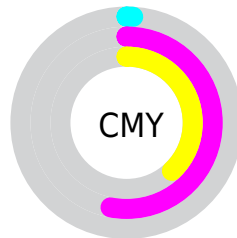


Cyan (0%)

Magenta (53%)

Yellow (37%)

Black (1%)



Cyan (1%)

Magenta (53%)

Yellow (38%)

Brightness & Saturation Gradients

These gradients show how the CIELCh color 67, 55.338, 3.763 changes by changing the brightness by 10 percent. The first figure shows a shift by +10% for each color and the second figure -10%.

Similar to the brightness gradients but the following saturation gradients show a change of the CIELCh color 67, 55.338, 3.763 by changing the saturation by 10% instead.

 67, 55.338, 3.763

 67, 55.338, 3.763

 100, 55.338, 3.763

 57, 55.338, 3.763

 87, 55.338, 3.763

 47, 55.338, 3.763

 97, 55.338, 3.763

 37, 55.338, 3.763

 27, 55.338, 3.763

 17, 55.338, 3.763

 7, 55.338, 3.763

 0, 55.338, 3.763

 67, 55.338, 3.763

 67, 55.338, 3.763

 62, 64.934, 6.343

 72, 44.961, 1.712

■ 59, 73.271, 9.618

■ 78, 34.267, 0.044

■ 56, 79.998, 13.760

■ 84, 23.597,
358.657

■ 54, 85.134, 18.843

■ 91, 13.176,
357.470

■ 54, 88.105, 22.660

■ 97, 3.130, 356.323

■ 100, 0.457,
200.828

Harmonies

Complementary

The Complementary color scheme is a pair of colors which are on the opposite of each other on the color wheel.



67, 55.338, 3.763



91, 47.039, 170.290

Rectangle

The Rectangle color scheme consists of four colors that form a rectangle on the color wheel.



67, 55.338, 3.763



67, 55.338, 53.763



67, 55.338, 183.763



67, 55.338, 233.763

Sweetspot

The Sweet Spot groups the original color and five complimentary colors.



67, 55.335, 3.765



89, 16.128, 357.787



65, 78.401, 317.936



46, 10.932, 358.027



0, 0.000, 0.000



53, 0.007, 296.813

Same Dimension

The Same Dimension uses a secret algorithm to generate beautiful new colors.



67, 55.335, 3.765



62, 65.927, 6.582



71, 49.748, 40.070



50, 5.656, 357.064



40, 70.808, 21.586



10, 31.476, 12.999

Inverse Universe

The Inverse Universe completely reimagines the original color for something new.



67, 55.335, 3.765



62, 65.927, 6.582



85, 32.916, 223.446



50, 5.656, 357.064



40, 70.808, 21.586



10, 31.476, 12.999

Previews

White Background



This preview shows how the CIELCh color 67, 55.338, 3.763 looks on a white background.

Color Contrast Check

Large Text (above 18pt) WCAG AA × Fail

Any Text WCAG AA × Fail

Large Text (above 18pt) WCAG AAA × Fail

Any Text WCAG AAA × Fail

Black Background



This preview shows how the CIELCh color 67, 55.338, 3.763 looks on a black background.

Color Contrast Check

Large Text (above 18pt) WCAG AA ✓ Pass

Any Text WCAG AA ✓ Pass

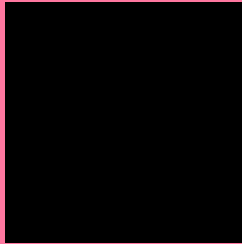
Large Text (above 18pt) WCAG AAA ✓ Pass

Any Text WCAG AAA ✓ Pass

If you want to check with other color combinations, try the [Color Contrast Checker](#).

CIELCh 67, 55.338, 3.763

Background



This preview shows how black text looks on a background with the CIELCh color 67, 55.338, 3.763.

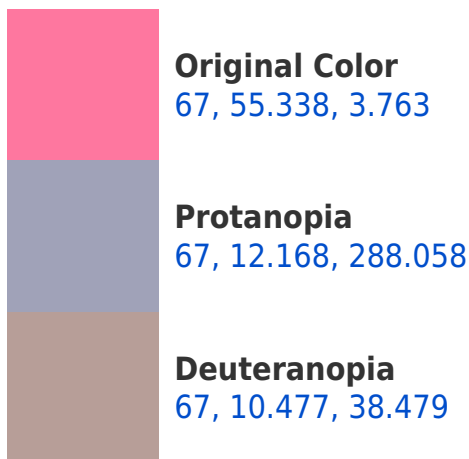


This preview shows how white text looks on a background with the CIELCh color 67, 55.338, 3.763.

Color Blindness Simulation

Color vision deficiency is a very complex topic, and I could not describe the different causes any better than Wikipedia does, so if you want to learn more, you should check out their [article about color blindness](#).

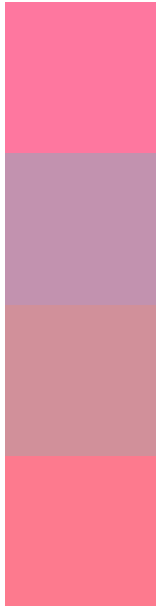
Dichromacy





Tritanopia
67, 52.921, 20.894

Trichromacy



Original Color
67, 55.338, 3.763

Protanomaly
66, 24.145, 340.394

Deuteranomaly
66, 26.419, 10.254

Tritanomaly
67, 53.362, 14.352

Monochromacy



Original Color
67, 55.338, 3.763

Achromatopsia
67, 0.008, 296.813

Achromatomaly
66, 20.562, 359.582

CSS Examples

Text

The CSS property to change the color of the text to CIELCh 67, 55.338, 3.763 is called "color". The color property can be set on classes, ids or directly on the HTML element.

This example shows how text in the color `rgb(254, 119, 159)` looks like.

```
.text, #text, p{  
    color:rgb(254, 119, 159)  
}
```

If you want to add a text shadow in that color use the text-shadow property, you can generate a text shadow directly with our [CSS Text Shadow Generator](#).

Here you see how black text with a 4 pixel rgb(254, 119, 159) colored shadow looks like.

```
.shadow{ text-shadow: 4px 4px 2px rgb(254, 119, 159) }
```

Border

The CSS property to change the border of an element to CIELCh 67, 55.338, 3.763 is called "border". The border property can be set on classes, ids or directly on the HTML element.

This example shows the color as border, it can be applied via the CSS property "border" or "border-color".

```
.border, #border, table{ border:4px solid rgb(254, 119, 159) }
```

If only the border color should be changed use the property border-color.

```
.border{ border-color:rgb(254, 119, 159) }
```

If you want to add a box shadow in that color use:

Here you see how a box with a 4 pixel rgb(254, 119, 159) colored shadow looks like.

```
.boxshadow{ -moz-box-shadow:4px 4px 4px  
4px rgb(254, 119, 159); -webkit-box-  
shadow:4px 4px 4px 4px rgb(254, 119, 159);  
box-shadow:4px 4px 4px 4px rgb(254, 119,  
159) }
```

Background

The CSS property to change the background color of an element to CIELCh 67, 55.338, 3.763 is called "background". The background property can be set on classes, ids or directly on the HTML element.

```
.background, #background, body{  
background: rgb(254, 119, 159) }
```

If only the background color should be changed can be used:

```
.background{ background-color: rgb(254,  
119, 159) }
```

This example shows the color as background, it is applied via the CSS property "background".

To optimize and compress your CSS code, you can use our [online CSS compressor and optimizer](#) based on csstidy. If you want to create a linear or radial gradient as background or border, check our [CSS Gradient Generator](#).

Hey! You found this booklet interesting? Support Converting Colors with the new Membership Option!

The pro membership hides all ads, plus gives you double the colors in the color bucket, and more awesome pro features!

[Learn more, Memberships starting at \\$2.50/m!](#)

**Follow me
on Twitter!**

@ConvertingColor