

Converting Colors

CIELCh(67, 55.546, 5.076)

Have a look what the booklet for
CIELCh(67, 55.546, 5.076) contains.

CIELCh(67, 55.582, 5.122)	3
<i>Conversions</i>	4
<i>Details</i>	6
<i>Harmonies</i>	11
<i>Previews</i>	20
<i>Color Blindness Simulation</i>	23
<i>CSS Examples</i>	26

Color

CIELCh(67, 55.582, 5.122)

Conversions

Conversions Part 1

Format	Color
Hex	FE769C
RGB	254, 118, 156
RGB Percent	100%, 46%, 61%
CMY	0.0021, 0.5356, 0.3866
CMYK	0.00, 0.53, 0.39, 0.00
HSL	343°, 99%, 73%
HSV	343°, 53%, 100%
XYZ	53.6109, 36.6320, 35.8790
YIQ	162.9960, 68.8580, 40.6500

Conversions

Conversions Part 2

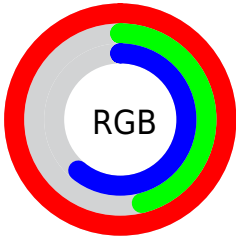
Format	Color
R_{YB}	254, 118, 156
Decimal	16676508
CIE Lab	67.00, 55.36, 4.96
CIE LCh	67, 55.582, 5.122
Yxy	36.6320, 0.4251, 0.2904
Android (android.graphics.Color)	4294866588 (0xFFFE769C)
YUV	162.9960, -3.4490, 79.8105
Hunter-Lab	60.5244, 52.1930, 7.2198

Details

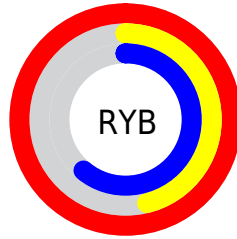
The CIELCh color **67, 55.582, 5.122** is a light color, and the websafe version is hex **FF6699**. A complement of this color would be **92, 46.646, 171.516**, and the grayscale version is **67, 0.008, 296.813**.

A 20% lighter version of the original color is **80, 35.165, 349.983**, and **47, 55.557, 4.920** is the 20% darker color. If you saturate the color by 10%, you get **62, 65.266, 7.768**, and if you desaturate by 10%, it is **72, 45.153, 3.023**.

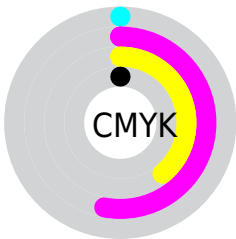
Distribution



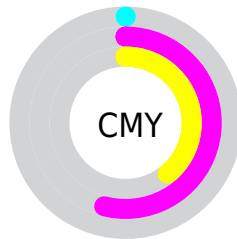
- Red (100%)
- Green (46%)
- Blue (61%)



- Red (100%)
- Yellow (46%)
- Blue (61%)



- Cyan (0%)
- Magenta (53%)
- Yellow (39%)
- Black (0%)



- Cyan (0%)
- Magenta (54%)
- Yellow (39%)

Brightness & Saturation Gradients

These gradients show how the CIELCh color 67, 55.582, 5.122 changes by changing the brightness by 10 percent. The first figure shows a shift by +10% for each color and the second figure -10%.

Similar to the brightness gradients but the following saturation gradients show a change of the CIELCh color 67, 55.582, 5.122 by changing the saturation by 10% instead.

 67, 55.582, 5.122

 67, 55.582, 5.122

 100, 55.582, 5.122

 57, 55.582, 5.122

 87, 55.582, 5.122

 47, 55.582, 5.122

 97, 55.582, 5.122

 37, 55.582, 5.122

 27, 55.582, 5.122

 17, 55.582, 5.122

 7, 55.582, 5.122

 0, 55.582, 5.122

 67, 55.582, 5.122

 67, 55.582, 5.122

 62, 65.266, 7.768

 72, 45.153, 3.023

■ 59, 73.737, 11.127

■ 78, 34.437, 1.323

■ 56, 80.664, 15.364

■ 84, 23.768,
359.914

■ 54, 86.078, 20.525

■ 91, 13.370,
358.714

■ 54, 89.163, 24.205

■ 97, 3.364, 357.571

100, 0.182,
203.032

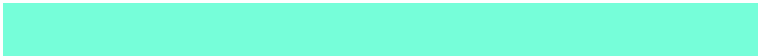
Harmonies

Complementary

The Complementary color scheme is a pair of colors which are on the opposite of each other on the color wheel.



67, 55.582, 5.122



92, 46.646, 171.516

Rectangle

The Rectangle color scheme consists of four colors that form a rectangle on the color wheel.



67, 55.582, 5.122



67, 55.582, 55.122



67, 55.582, 185.122



67, 55.582, 235.122

Sweetspot

The Sweet Spot groups the original color and five complimentary colors.



67, 55.579, 5.124



89, 16.005, 359.004



66, 79.093, 318.461



46, 10.851, 359.246



0, 0.000, 0.000



53, 0.007, 296.813

Same Dimension

The Same Dimension uses a secret algorithm to generate beautiful new colors.



67, 55.579, 5.124



62, 65.868, 7.932



72, 49.694, 41.491



50, 5.609, 358.277



40, 71.439, 23.122



10, 31.552, 14.163

Inverse Universe

The Inverse Universe completely reimagines the original color for something new.



67, 55.579, 5.124



62, 65.868, 7.932



84, 32.989, 226.041



50, 5.609, 358.277



40, 71.439, 23.122



10, 31.552, 14.163

Previews

White Background



This preview shows how the CIELCh color 67, 55.582, 5.122 looks on a white background.

Color Contrast Check

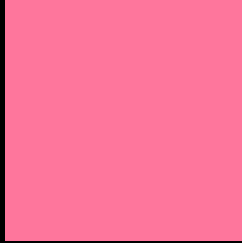
Large Text (above 18pt) WCAG AA × Fail

Any Text WCAG AA × Fail

Large Text (above 18pt) WCAG AAA × Fail

Any Text WCAG AAA × Fail

Black Background



This preview shows how the CIELCh color 67, 55.582, 5.122 looks on a black background.

Color Contrast Check

Large Text (above 18pt) WCAG AA ✓ Pass

Any Text WCAG AA ✓ Pass

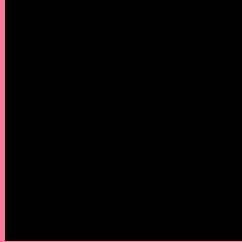
Large Text (above 18pt) WCAG AAA ✓ Pass

Any Text WCAG AAA ✓ Pass

If you want to check with other color combinations, try the [Color Contrast Checker](#).

CIELCh 67, 55.582, 5.122

Background



This preview shows how black text looks on a background with the CIELCh color 67, 55.582, 5.122.

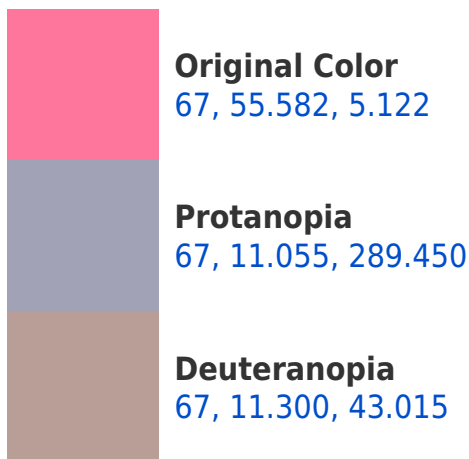


This preview shows how white text looks on a background with the CIELCh color 67, 55.582, 5.122.

Color Blindness Simulation

Color vision deficiency is a very complex topic, and I could not describe the different causes any better than Wikipedia does, so if you want to learn more, you should check out their [article about color blindness](#).

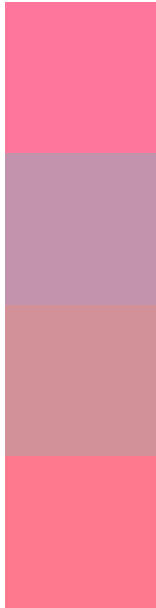
Dichromacy





Tritanopia
67, 53.682, 20.536

Trichromacy



Original Color
67, 55.582, 5.122

Protanomaly
66, 23.780, 343.124

Deuteranomaly
66, 26.755, 12.806

Tritanomaly
67, 54.181, 14.672

Monochromacy



Original Color
67, 55.582, 5.122

Achromatopsia
67, 0.008, 296.813

Achromatomaly
66, 20.585, 359.597

CSS Examples

Text

The CSS property to change the color of the text to CIELCh 67, 55.582, 5.122 is called "color". The color property can be set on classes, ids or directly on the HTML element.

This example shows how text in the color `rgb(254, 118, 156)` looks like.

```
.text, #text, p{  
    color:rgb(254, 118, 156)  
}
```

If you want to add a text shadow in that color use the text-shadow property, you can generate a text shadow directly with our [CSS Text Shadow Generator](#).

Here you see how black text with a 4 pixel rgb(254, 118, 156) colored shadow looks like.

```
.shadow{ text-shadow: 4px 4px 2px rgb(254, 118, 156) }
```

Border

The CSS property to change the border of an element to CIELCh 67, 55.582, 5.122 is called "border". The border property can be set on classes, ids or directly on the HTML element.

This example shows the color as border, it can be applied via the CSS property "border" or "border-color".

```
.border, #border, table{ border:4px solid rgb(254, 118, 156) }
```

If only the border color should be changed use the property `border-color`.

```
.border{ border-color:rgb(254, 118, 156) }
```

If you want to add a box shadow in that color use:

Here you see how a box with a 4 pixel `rgb(254, 118, 156)` colored shadow looks like.

```
.boxshadow{ -moz-box-shadow:4px 4px 4px  
4px rgb(254, 118, 156); -webkit-box-  
shadow:4px 4px 4px 4px rgb(254, 118, 156);  
box-shadow:4px 4px 4px 4px rgb(254, 118,  
156) }
```

Background

The CSS property to change the background color of an element to CIELCh 67, 55.582, 5.122 is called "background". The background property can be set on classes, ids or directly on the HTML element.

```
.background, #background, body{  
background: rgb(254, 118, 156) }
```

If only the background color should be changed can be used:

```
.background{ background-color: rgb(254,  
118, 156) }
```

This example shows the color as background, it is applied via the CSS property "background".

To optimize and compress your CSS code, you can use our [online CSS compressor and optimizer](#) based on csstidy. If you want to create a linear or radial gradient as background or border, check our [CSS Gradient Generator](#).

Hey! You found this booklet interesting? Support Converting Colors with the new Membership Option!

The pro membership hides all ads, plus gives you double the colors in the color bucket, and more awesome pro features!

[Learn more, Memberships starting at \\$2.50/m!](#)

**Follow me
on Twitter!**

@ConvertingColor