

Converting Colors

CIELCh(67, 57.140, 0.174)

Have a look what the booklet for
CIELCh(67, 57.140, 0.174) contains.

CIELCh(67, 57.140, 0.174)	3
<i>Conversions</i>	4
<i>Details</i>	6
<i>Harmonies</i>	11
<i>Previews</i>	20
<i>Color Blindness Simulation</i>	23
<i>CSS Examples</i>	26

Color

CIELCh(67, 57.140, 0.174)

Conversions

Conversions Part 1

Format	Color
Hex	FF75A5
RGB	255, 117, 165
RGB Percent	100%, 46%, 65%
CMY	0.0006, 0.5417, 0.3535
CMYK	0.00, 0.54, 0.35, 0.00
HSL	339°, 100%, 73%
HSV	339°, 54%, 100%
XYZ	54.3067, 36.6320, 39.7411
YIQ	163.7340, 66.8400, 44.1840

Conversions

Conversions Part 2

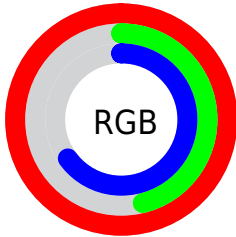
Format	Color
R _Y B	255, 117, 165
Decimal	16741797
CIE Lab	67.00, 57.14, 0.17
CIE LCh	67, 57.140, 0.174
Yxy	36.6320, 0.4156, 0.2803
Android (android.graphics.Color)	4294931877 (0xFFFF75A5)
YUV	163.7340, 0.6241, 80.0403
Hunter-Lab	60.5244, 54.2452, 3.4365

Details

The CIELCh color $67, 57.140, 0.174$ is a light color, and the websafe version is hex FF6699 . A complement of this color would be $92, 50.116, 166.590$, and the grayscale version is $67, 0.008, 296.813$.

A 20% lighter version of the original color is $80, 38.432, 342.711$, and $47, 57.129, 0.540$ is the 20% darker color. If you saturate the color by 10%, you get $62, 66.442, 2.641$, and if you desaturate by 10%, it is $72, 46.859, 358.203$.

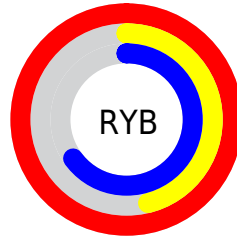
Distribution



Red (100%)

Green (46%)

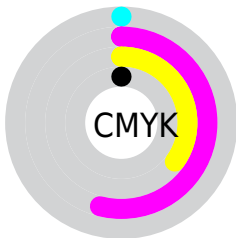
Blue (65%)



Red (100%)

Yellow (46%)

Blue (65%)

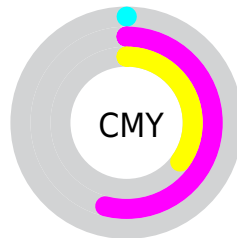


Cyan (0%)

Magenta (54%)

Yellow (35%)

Black (0%)



Cyan (0%)

Magenta (54%)

Yellow (35%)

Brightness & Saturation Gradients

These gradients show how the CIELCh color 67, 57.140, 0.174 changes by changing the brightness by 10 percent. The first figure shows a shift by +10% for each color and the second figure -10%.

Similar to the brightness gradients but the following saturation gradients show a change of the CIELCh color 67, 57.140, 0.174 by changing the saturation by 10% instead.

 67, 57.140, 0.174

 67, 57.140, 0.174

 100, 57.140, 0.174

 57, 57.140, 0.174

 87, 57.140, 0.174

 47, 57.140, 0.174


 97, 57.140, 0.174

 37, 57.140, 0.174

 27, 57.140, 0.174

 17, 57.140, 0.174

 7, 57.140, 0.174

 0, 57.140, 0.174

 67, 57.140, 0.174

 67, 57.140, 0.174

 62, 66.442, 2.641

 72, 46.859,

■ 59, 74.255, 5.769 358.203

■ 56, 80.216, 9.743 ■ 78, 36.104,
356.590

■ 55, 84.368, 14.677

■ 54, 86.333, 17.891 ■ 84, 25.253,
355.237

■ 91, 14.564,
354.072

■ 97, 4.190, 352.978

100, 0.054,
211.723

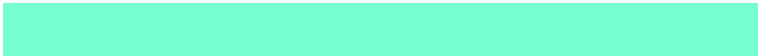
Harmonies

Complementary

The Complementary color scheme is a pair of colors which are on the opposite of each other on the color wheel.



67, 57.140, 0.174



92, 50.116, 166.590

Rectangle

The Rectangle color scheme consists of four colors that form a rectangle on the color wheel.



67, 57.140, 0.174



67, 57.140, 50.174



67, 57.140, 180.174



67, 57.140, 230.174

Sweetspot

The Sweet Spot groups the original color and five complimentary colors.



67, 57.136, 0.176



89, 16.539, 354.277



64, 79.638, 316.418



46, 11.204, 354.510



0, 0.000, 0.000



53, 0.007, 296.813

Same Dimension

The Same Dimension uses a secret algorithm to generate beautiful new colors.



67, 57.136, 0.176



62, 67.211, 2.882



70, 52.614, 36.157



50, 5.810, 353.573



40, 69.281, 16.824



10, 31.313, 9.166

Inverse Universe

The Inverse Universe completely reimagines the original color for something new.



67, 57.136, 0.176



62, 67.211, 2.882



87, 34.162, 216.121



50, 5.810, 353.573



40, 69.281, 16.824



10, 31.313, 9.166

Previews

White Background



This preview shows how the CIELCh color 67, 57.140, 0.174 looks on a white background.

Color Contrast Check

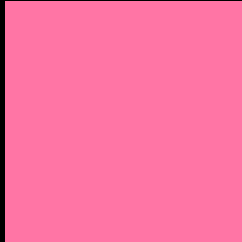
Large Text (above 18pt) WCAG AA × Fail

Any Text WCAG AA × Fail

Large Text (above 18pt) WCAG AAA × Fail

Any Text WCAG AAA × Fail

Black Background



This preview shows how the CIELCh color 67, 57.140, 0.174 looks on a black background.

Color Contrast Check

Large Text (above 18pt) WCAG AA ✓ Pass

Any Text WCAG AA ✓ Pass

Large Text (above 18pt) WCAG AAA ✓ Pass

Any Text WCAG AAA ✓ Pass

If you want to check with other color combinations, try the [Color Contrast Checker](#).

CIELCh 67, 57.140, 0.174

Background



This preview shows how black text looks on a background with the CIELCh color 67, 57.140, 0.174.

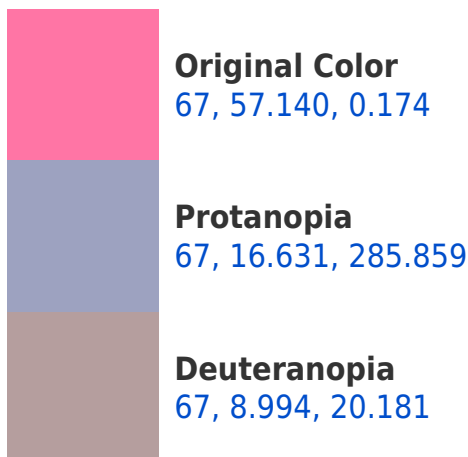


This preview shows how white text looks on a background with the CIELCh color 67, 57.140, 0.174.

Color Blindness Simulation

Color vision deficiency is a very complex topic, and I could not describe the different causes any better than Wikipedia does, so if you want to learn more, you should check out their [article about color blindness](#).

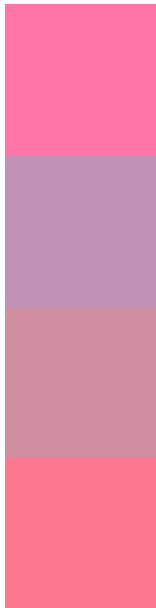
Dichromacy





Tritanopia
67, 53.281, 20.449

Trichromacy



Original Color
67, 57.140, 0.174

Protanomaly
66, 26.448, 333.336

Deuteranomaly
66, 27.058, 2.211

Tritanomaly
67, 53.706, 12.803

Monochromacy



Original Color
67, 57.140, 0.174

Achromatopsia
67, 0.008, 296.813

Achromatomaly
66, 21.488, 355.876

CSS Examples

Text

The CSS property to change the color of the text to CIELCh 67, 57.140, 0.174 is called "color". The color property can be set on classes, ids or directly on the HTML element.

This example shows how text in the color `rgb(255, 117, 165)` looks like.

```
.text, #text, p{  
    color:rgb(255, 117, 165)  
}
```

If you want to add a text shadow in that color use the text-shadow property, you can generate a text shadow directly with our [CSS Text Shadow Generator](#).

Here you see how black text with a 4 pixel rgb(255, 117, 165) colored shadow looks like.

```
.shadow{ text-shadow: 4px 4px 2px rgb(255, 117, 165) }
```

Border

The CSS property to change the border of an element to CIELCh 67, 57.140, 0.174 is called "border". The border property can be set on classes, ids or directly on the HTML element.

This example shows the color as border, it can be applied via the CSS property "border" or "border-color".

```
.border, #border, table{ border:4px solid rgb(255, 117, 165) }
```

If only the border color should be changed use the property `border-color`.

```
.border{ border-color:rgb(255, 117, 165) }
```

If you want to add a box shadow in that color use:

Here you see how a box with a 4 pixel `rgb(255, 117, 165)` colored shadow looks like.

```
.boxshadow{ -moz-box-shadow:4px 4px 4px  
4px rgb(255, 117, 165); -webkit-box-  
shadow:4px 4px 4px 4px rgb(255, 117, 165);  
box-shadow:4px 4px 4px 4px rgb(255, 117,  
165) }
```

Background

The CSS property to change the background color of an element to CIELCh 67, 57.140, 0.174 is called "background". The background property can be set on classes, ids or directly on the HTML element.

```
.background, #background, body{  
background: rgb(255, 117, 165) }
```

If only the background color should be changed can be used:

```
.background{ background-color: rgb(255,  
117, 165) }
```

This example shows the color as background, it is applied via the CSS property "background".

To optimize and compress your CSS code, you can use our [online CSS compressor and optimizer](#) based on csstidy. If you want to create a linear or radial gradient as background or border, check our [CSS Gradient Generator](#).

Hey! You found this booklet interesting? Support Converting Colors with the new Membership Option!

The pro membership hides all ads, plus gives you double the colors in the color bucket, and more awesome pro features!

[Learn more, Memberships starting at \\$2.50/m!](#)

**Follow me
on Twitter!**

@ConvertingColor