

Converting Colors

CIELCh(67, 6.913, 1.450)

Have a look what the booklet for
CIELCh(67, 6.913, 1.450) contains.

CIELCh(67, 6.915, 1.440)	3
<i>Conversions</i>	4
<i>Details</i>	6
<i>Harmonies</i>	11
<i>Previews</i>	20
<i>Color Blindness Simulation</i>	23
<i>CSS Examples</i>	26

Color

CIELCh(67, 6.915, 1.440)

Conversions

Conversions Part 1

Format	Color
Hex	B09FA3
RGB	176, 159, 163
RGB Percent	69%, 62%, 64%
CMY	0.3101, 0.3768, 0.3611
CMYK	0.00, 0.10, 0.07, 0.31
HSL	346°, 10%, 66%
HSV	346°, 10%, 69%
XYZ	36.8751, 36.6320, 39.7409
YIQ	164.5390, 8.8480, 4.8480

Conversions

Conversions Part 2

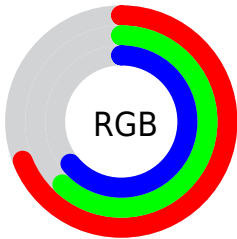
Format	Color
RYB	176, 159, 163
Decimal	11575203
CIELab	67.00, 6.91, 0.17
CIELCh	67, 6.915, 1.440
Yxy	36.6320, 0.3256, 0.3235
Android (android.graphics.Color)	4289765283 (0xFFB09FA3)
YUV	164.5390, -0.7587, 10.0513
Hunter-Lab	60.5244, 2.8355, 3.4367

Details

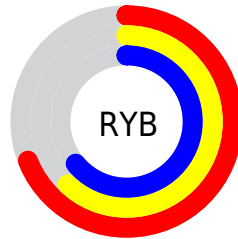
The CIELCh color $67, 6.915, 1.440$ is a light color, and the websafe version is hex 999999 . A complement of this color would be $70, 6.683, 179.808$, and the grayscale version is $68, 0.008, 296.813$.

A 20% lighter version of the original color is $87, 6.888, 2.219$, and $47, 6.464, 4.308$ is the 20% darker color. If you saturate the color by 10%, you get $62, 14.398, 2.570$, and if you desaturate by 10%, it is $72, 0.233, 182.527$.

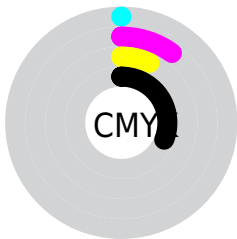
Distribution



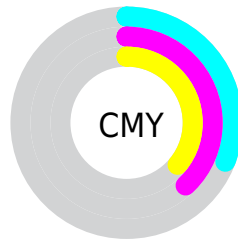
- Red (69%)
- Green (62%)
- Blue (64%)



- Red (69%)
- Yellow (62%)
- Blue (64%)



- Cyan (0%)
- Magenta (10%)
- Yellow (7%)
- Black (31%)



- Cyan (31%)
- Magenta (38%)
- Yellow (36%)

Brightness & Saturation Gradients

These gradients show how the CIELCh color 67, 6.915, 1.440 changes by changing the brightness by 10 percent. The first figure shows a shift by +10% for each color and the second figure -10%.

Similar to the brightness gradients but the following saturation gradients show a change of the CIELCh color 67, 6.915, 1.440 by changing the saturation by 10% instead.

■ 67, 6.915, 1.440

■ 67, 6.915, 1.440

■ 100, 6.915, 1.440

■ 57, 6.915, 1.440

■ 87, 6.915, 1.440

■ 47, 6.915, 1.440

■ 97, 6.915, 1.440

■ 37, 6.915, 1.440

■ 27, 6.915, 1.440

■ 17, 6.915, 1.440

■ 7, 6.915, 1.440

■ 0, 6.915, 1.440

■ 67, 6.915, 1.440

■ 67, 6.915, 1.440

■ 62, 14.398, 2.570

■ 72, 0.233, 182.527

57, 22.165, 3.867

77, 7.025, 179.831

53, 30.106, 5.422

82, 13.468,
179.079

49, 38.033, 7.329

87, 19.582,
178.425

45, 45.681, 9.711

42, 52.732, 12.718

92, 25.393,
177.840

39, 58.896, 16.501

95, 26.511,
184.970

38, 64.046, 21.140

37, 68.519, 26.311

95, 25.131,
197.868

Harmonies

Complementary

The Complementary color scheme is a pair of colors which are on the opposite of each other on the color wheel.



67, 6.915, 1.440



70, 6.683, 179.808

Rectangle

The Rectangle color scheme consists of four colors that form a rectangle on the color wheel.



67, 6.915, 1.440



67, 6.915, 51.440



67, 6.915, 181.440



67, 6.915, 231.440

Sweetspot

The Sweet Spot groups the original color and five complimentary colors.



67, 6.913, 1.450



89, 2.625, 0.673



67, 10.578, 317.684



47, 1.991, 0.789



96, 0.011, 296.813



48, 0.006, 296.813

Same Dimension

The Same Dimension uses a secret algorithm to generate beautiful new colors.



67, 6.913, 1.450



84, 10.725, 1.725



68, 5.464, 44.927



34, 4.000, 1.411



31, 60.860, 25.700



2, 8.128, 3.874

Inverse Universe

The Inverse Universe completely reimagines the original color for something new.



67, 6.913, 1.450



84, 10.725, 1.725



69, 5.167, 226.009



34, 4.000, 1.411



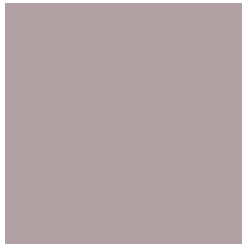
31, 60.860, 25.700



2, 8.128, 3.874

Previews

White Background



This preview shows how the CIELCh color 67, 6.915, 1.440 looks on a white background.

Color Contrast Check

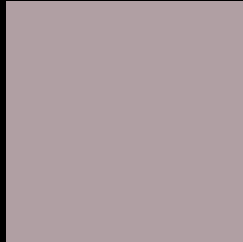
Large Text (above 18pt) WCAG AA × Fail

Any Text WCAG AA × Fail

Large Text (above 18pt) WCAG AAA × Fail

Any Text WCAG AAA × Fail

Black Background



This preview shows how the CIE LCh color 67, 6.915, 1.440 looks on a black background.

Color Contrast Check

Large Text (above 18pt) WCAG AA ✓ Pass

Any Text WCAG AA ✓ Pass

Large Text (above 18pt) WCAG AAA ✓ Pass

Any Text WCAG AAA ✓ Pass

If you want to check with other color combinations, try the [Color Contrast Checker](#).

CIELCh 67, 6.915, 1.440

Background



This preview shows how black text looks on a background with the CIELCh color 67, 6.915, 1.440.



This preview shows how white text looks on a background with the CIELCh color 67, 6.915, 1.440.

Color Blindness Simulation

Color vision deficiency is a very complex topic, and I could not describe the different causes any better than Wikipedia does, so if you want to learn more, you should check out their [article about color blindness](#).

Dichromacy



Original Color


67, 6.915, 1.440

Protanopia

67, 2.027, 324.430

Deuteranopia

67, 8.567, 1.459



Tritanopia
67, 9.820, 337.936

Trichromacy



Original Color

67, 6.915, 1.440

Protanomaly

67, 3.488, 351.283

Deuteranomaly

67, 8.198, 0.534

Tritanomaly

67, 8.814, 345.963

Monochromacy



Original Color

67, 6.915, 1.440

Achromatopsia

67, 0.008, 296.813

Achromatomaly

67, 2.551, 353.852

CSS Examples

Text

The CSS property to change the color of the text to CIELCh 67, 6.915, 1.440 is called "color". The color property can be set on classes, ids or directly on the HTML element.

This example shows how text in the color `rgb(176, 159, 163)` looks like.

```
.text, #text, p{  
    color:rgb(176, 159, 163)  
}
```

If you want to add a text shadow in that color use the text-shadow property, you can generate a text shadow directly with our [CSS Text Shadow Generator](#).

Here you see how black text with a 4 pixel rgb(176, 159, 163) colored shadow looks like.

```
.shadow{ text-shadow: 4px 4px 2px rgb(176, 159, 163) }
```

Border

The CSS property to change the border of an element to CIELCh 67, 6.915, 1.440 is called "border". The border property can be set on classes, ids or directly on the HTML element.

This example shows the color as border, it can be applied via the CSS property "border" or "border-color".

```
.border, #border, table{ border:4px solid rgb(176, 159, 163) }
```

If only the border color should be changed use the property `border-color`.

```
.border{ border-color:rgb(176, 159, 163) }
```

If you want to add a box shadow in that color use:

Here you see how a box with a 4 pixel `rgb(176, 159, 163)` colored shadow looks like.

```
.boxshadow{ -moz-box-shadow:4px 4px 4px  
4px rgb(176, 159, 163); -webkit-box-  
shadow:4px 4px 4px 4px rgb(176, 159, 163);  
box-shadow:4px 4px 4px 4px rgb(176, 159,  
163) }
```

Background

The CSS property to change the background color of an element to CIELCh 67, 6.915, 1.440 is called "background". The background property can be set on classes, ids or directly on the HTML element.

```
.background, #background, body{  
background: rgb(176, 159, 163) }
```

If only the background color should be changed can be used:

```
.background{ background-color: rgb(176,  
159, 163) }
```

This example shows the color as background, it is applied via the CSS property "background".

To optimize and compress your CSS code, you can use our [online CSS compressor and optimizer](#) based on csstidy. If you want to create a linear or radial gradient as background or border, check our [CSS Gradient Generator](#).

Hey! You found this booklet interesting? Support Converting Colors with the new Membership Option!

The pro membership hides all ads, plus gives you double the colors in the color bucket, and more awesome pro features!

[Learn more, Memberships starting at \\$2.50/m!](#)

**Follow me
on Twitter!**

@ConvertingColor