

Converting Colors

CIELCh(67, 7.407, 19.887)

Have a look what the booklet for
CIELCh(67, 7.407, 19.887) contains.

CIELCh(67, 7.393, 20.018)	3
<i>Conversions</i>	4
<i>Details</i>	6
<i>Harmonies</i>	11
<i>Previews</i>	20
<i>Color Blindness Simulation</i>	23
<i>CSS Examples</i>	26

Color

CIELCh(67, 7.393, 20.018)

Conversions

Conversions Part 1

Format	Color
Hex	B29F9F
RGB	178, 159, 159
RGB Percent	70%, 62%, 62%
CMY	0.3030, 0.3775, 0.3775
CMYK	0.00, 0.11, 0.11, 0.30
HSL	0°, 11%, 66%
HSV	0°, 11%, 70%
XYZ	36.8853, 36.6320, 37.8071
YIQ	164.6810, 11.3240, 4.0280

Conversions

Conversions Part 2

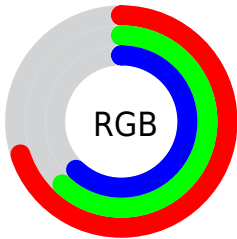
Format	Color
R _Y B	178, 159, 159
Decimal	11706271
CIE Lab	67.00, 6.95, 2.53
CIE LCh	67, 7.393, 20.018
Yxy	36.6320, 0.3313, 0.3291
Android (android.graphics.Color)	4289896351 (0xFFB29F9F)
YUV	164.6810, -2.8007, 11.6808
Hunter-Lab	60.5244, 2.8655, 5.3310

Details

The CIELCh color $67, 7.393, 20.018$ is a light color, and the websafe version is hex 999999 . A complement of this color would be $71, 6.914, 198.919$, and the grayscale version is $68, 0.008, 296.813$.

A 20% lighter version of the original color is $87, 7.337, 19.863$, and $47, 7.126, 20.219$ is the 20% darker color. If you saturate the color by 10%, you get $62, 14.875, 20.885$, and if you desaturate by 10%, it is $72, 0.458, 18.358$.

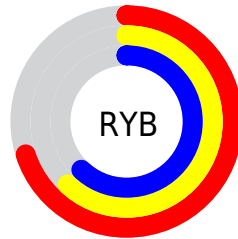
Distribution



Red (70%)

Green (62%)

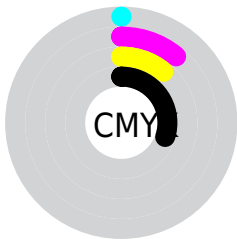
Blue (62%)



Red (70%)

Yellow (62%)

Blue (62%)

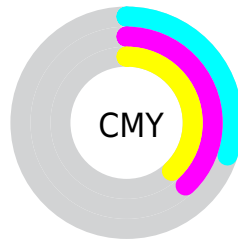


Cyan (0%)

Magenta (11%)

Yellow (11%)

Black (30%)



Cyan (30%)

Magenta (38%)

Yellow (38%)


Brightness & Saturation Gradients


These gradients show how the CIELCh color 67, 7.393, 20.018 changes by changing the brightness by 10 percent. The first figure shows a shift by +10% for each color and the second figure -10%.

Similar to the brightness gradients but the following saturation gradients show a change of the CIELCh color 67, 7.393, 20.018 by changing the saturation by 10% instead.

 67, 7.393, 20.018  67, 7.393, 20.018

 100, 7.393, 20.018  57, 7.393, 20.018

 87, 7.393, 20.018  47, 7.393, 20.018

 97, 7.393, 20.018  37, 7.393, 20.018

 27, 7.393, 20.018

 17, 7.393, 20.018

 7, 7.393, 20.018

 0, 7.393, 20.018

 67, 7.393, 20.018  67, 7.393, 20.018

 62, 14.875, 20.885  72, 0.458, 18.358

57, 22.912, 21.960

77, 5.959, 199.046

53, 31.458, 23.352

83, 11.903,
198.606

48, 40.401, 25.165

88, 17.426,
198.274

45, 49.541, 27.505

41, 58.595, 30.438

93, 22.577,
198.008

39, 67.159, 33.872

95, 24.627,
197.899

38, 74.485, 37.311

37, 79.719, 39.968

Harmonies

Complementary

The Complementary color scheme is a pair of colors which are on the opposite of each other on the color wheel.



67, 7.393, 20.018



71, 6.914, 198.919

Rectangle

The Rectangle color scheme consists of four colors that form a rectangle on the color wheel.



67, 7.393, 20.018



67, 7.393, 70.018



67, 7.393, 200.018



67, 7.393, 250.018

Sweetspot

The Sweet Spot groups the original color and five complimentary colors.



67, 7.392, 20.031



90, 2.503, 19.353



68, 12.702, 325.001



48, 1.918, 19.453



96, 0.011, 296.813



49, 0.007, 296.813

Same Dimension

The Same Dimension uses a secret algorithm to generate beautiful new colors.



67, 7.392, 20.031



84, 11.280, 20.234



69, 6.358, 74.082



35, 3.910, 19.925



31, 70.928, 39.528



2, 9.155, 19.415

Inverse Universe

The Inverse Universe completely reimagines the original color for something new.



71, 6.914, 198.919



90, 10.377, 198.775



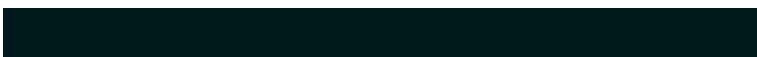
68, 6.200, 256.858



37, 3.690, 199.000



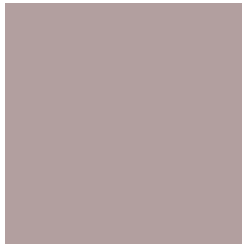
57, 34.219, 196.409



7, 9.135, 199.122

Previews

White Background



This preview shows how the CIELCh color 67, 7.393, 20.018 looks on a white background.

Color Contrast Check

Large Text (above 18pt) WCAG AA × Fail

Any Text WCAG AA × Fail

Large Text (above 18pt) WCAG AAA × Fail

Any Text WCAG AAA × Fail

Black Background



This preview shows how the CIE LCh color 67, 7.393, 20.018 looks on a black background.

Color Contrast Check

Large Text (above 18pt) WCAG AA ✓ Pass

Any Text WCAG AA ✓ Pass

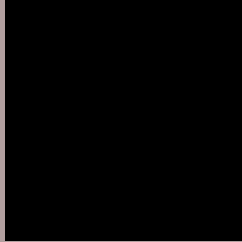
Large Text (above 18pt) WCAG AAA ✓ Pass

Any Text WCAG AAA ✓ Pass

If you want to check with other color combinations, try the [Color Contrast Checker](#).

CIELCh 67, 7.393, 20.018

Background



This preview shows how black text looks on a background with the CIELCh color 67, 7.393, 20.018.



This preview shows how white text looks on a background with the CIELCh color 67, 7.393, 20.018.

Color Blindness Simulation

Color vision deficiency is a very complex topic, and I could not describe the different causes any better than Wikipedia does, so if you want to learn more, you should check out their [article about color blindness](#).

Dichromacy



Original Color


67, 7.393, 20.018

Protanopia

67, 1.619, 39.125

Deuteranopia

67, 8.593, 16.490



Tritanopia
67, 10.703, 342.230

Trichromacy



Original Color
67, 7.393, 20.018

Protanomaly
67, 3.505, 28.607

Deuteranomaly
67, 8.197, 16.271

Tritanomaly
67, 8.956, 354.752

Monochromacy



Original Color
67, 7.393, 20.018

Achromatopsia
67, 0.008, 296.813

Achromatomaly
67, 2.681, 19.470

CSS Examples

Text

The CSS property to change the color of the text to CIELCh 67, 7.393, 20.018 is called "color". The color property can be set on classes, ids or directly on the HTML element.

This example shows how text in the color `rgb(178, 159, 159)` looks like.

```
.text, #text, p{  
    color:rgb(178, 159, 159)  
}
```

If you want to add a text shadow in that color use the text-shadow property, you can generate a text shadow directly with our [CSS Text Shadow Generator](#).

Here you see how black text with a 4 pixel rgb(178, 159, 159) colored shadow looks like.

```
.shadow{ text-shadow: 4px 4px 2px rgb(178, 159, 159) }
```

Border

The CSS property to change the border of an element to CIELCh 67, 7.393, 20.018 is called "border". The border property can be set on classes, ids or directly on the HTML element.

This example shows the color as border, it can be applied via the CSS property "border" or "border-color".

```
.border, #border, table{ border:4px solid rgb(178, 159, 159) }
```

If only the border color should be changed use the property `border-color`.

```
.border{ border-color:rgb(178, 159, 159) }
```

If you want to add a box shadow in that color use:

Here you see how a box with a 4 pixel `rgb(178, 159, 159)` colored shadow looks like.

```
.boxshadow{ -moz-box-shadow:4px 4px 4px  
4px rgb(178, 159, 159); -webkit-box-  
shadow:4px 4px 4px 4px rgb(178, 159, 159);  
box-shadow:4px 4px 4px 4px rgb(178, 159,  
159) }
```

Background

The CSS property to change the background color of an element to CIELCh 67, 7.393, 20.018 is called "background". The background property can be set on classes, ids or directly on the HTML element.

```
.background, #background, body{  
background: rgb(178, 159, 159) }
```

If only the background color should be changed can be used:

```
.background{ background-color: rgb(178,  
159, 159) }
```

This example shows the color as background, it is applied via the CSS property "background".

To optimize and compress your CSS code, you can use our [online CSS compressor and optimizer](#) based on csstidy. If you want to create a linear or radial gradient as background or border, check our [CSS Gradient Generator](#).

Hey! You found this booklet interesting? Support Converting Colors with the new Membership Option!

The pro membership hides all ads, plus gives you double the colors in the color bucket, and more awesome pro features!

[Learn more, Memberships starting at \\$2.50/m!](#)

**Follow me
on Twitter!**

@ConvertingColor