

Converting Colors

CIELCh(67, 8.387, 17.242)

Have a look what the booklet for
CIELCh(67, 8.387, 17.242) contains.

CIELCh(67, 8.593, 16.490)	3
<i>Conversions</i>	4
<i>Details</i>	6
<i>Harmonies</i>	11
<i>Previews</i>	20
<i>Color Blindness Simulation</i>	23
<i>CSS Examples</i>	26

Color

CIELCh(67, 8.593, 16.490)

Conversions

Conversions Part 1

Format	Color
Hex	B49E9F
RGB	180, 158, 159
RGB Percent	71%, 62%, 62%
CMY	0.2943, 0.3806, 0.3767
CMYK	0.00, 0.12, 0.12, 0.29
HSL	357°, 13%, 66%
HSV	357°, 12%, 71%
XYZ	37.2791, 36.6320, 37.8811
YIQ	164.6920, 12.7910, 4.9750

Conversions

Conversions Part 2

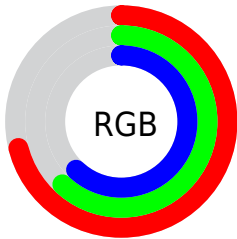
Format	Color
R_{YB}	180, 158, 159
Decimal	11837087
CIE Lab	67.00, 8.24, 2.44
CIE LCh	67, 8.593, 16.490
Yxy	36.6320, 0.3335, 0.3277
Android (android.graphics.Color)	4290027167 (0xFFB49E9F)
YUV	164.6920, -2.8062, 13.4251
Hunter-Lab	60.5244, 4.0268, 5.2585

Details

The CIELCh color $67, 8.593, 16.490$ is a light color, and the websafe version is hex 999999 . A complement of this color would be $72, 8.007, 194.907$, and the grayscale version is $68, 0.008, 296.813$.

A 20% lighter version of the original color is $87, 8.468, 16.444$, and $47, 8.420, 16.410$ is the 20% darker color. If you saturate the color by 10%, you get $62, 16.188, 17.484$, and if you desaturate by 10%, it is $72, 1.508, 15.459$.

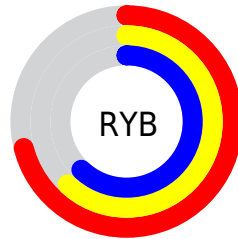
Distribution



Red (71%)

Green (62%)

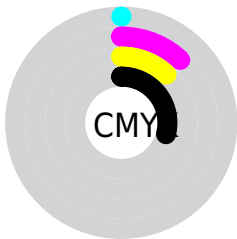
Blue (62%)



Red (71%)

Yellow (62%)

Blue (62%)

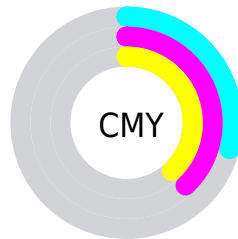


Cyan (0%)

Magenta (12%)

Yellow (12%)

Black (29%)



Cyan (29%)


Magenta (38%)


Yellow (38%)

Brightness & Saturation Gradients

These gradients show how the CIELCh color 67, 8.593, 16.490 changes by changing the brightness by 10 percent. The first figure shows a shift by +10% for each color and the second figure -10%.

Similar to the brightness gradients but the following saturation gradients show a change of the CIELCh color 67, 8.593, 16.490 by changing the saturation by 10% instead.

 67, 8.593, 16.490  67, 8.593, 16.490

 100, 8.593, 16.490  57, 8.593, 16.490

 87, 8.593, 16.490  47, 8.593, 16.490

 97, 8.593, 16.490  37, 8.593, 16.490

 27, 8.593, 16.490

 17, 8.593, 16.490

 7, 8.593, 16.490

 0, 8.593, 16.490

 67, 8.593, 16.490  67, 8.593, 16.490

 62, 16.188, 17.484  72, 1.508, 15.459

57, 24.281, 18.701

77, 5.081, 195.269

53, 32.802, 20.249

83, 11.210,
194.701

48, 41.611, 22.235

88, 16.925,
194.255

45, 50.484, 24.775

42, 59.138, 27.957

93, 22.270,
193.883

39, 67.235, 31.732

95, 24.004,
197.937

38, 74.262, 35.703

37, 78.523, 38.146

Harmonies

Complementary

The Complementary color scheme is a pair of colors which are on the opposite of each other on the color wheel.



67, 8.593, 16.490



72, 8.007, 194.907

Rectangle

The Rectangle color scheme consists of four colors that form a rectangle on the color wheel.



67, 8.593, 16.490



67, 8.593, 66.490



67, 8.593, 196.490



67, 8.593, 246.490

Sweetspot

The Sweet Spot groups the original color and five complimentary colors.



67, 8.591, 16.501



90, 3.387, 15.741



67, 14.465, 323.706



48, 2.412, 15.824



96, 0.011, 296.813



49, 0.007, 296.813

Same Dimension

The Same Dimension uses a secret algorithm to generate beautiful new colors.



67, 8.591, 16.501



83, 13.224, 16.781



70, 7.174, 68.389



35, 3.913, 16.242



31, 69.258, 37.688



2, 9.174, 16.493

Inverse Universe

The Inverse Universe completely reimagines the original color for something new.



67, 8.591, 16.501



83, 13.224, 16.781



69, 6.896, 251.391



35, 3.913, 16.242



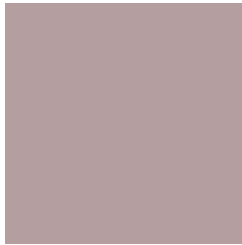
31, 69.258, 37.688



2, 9.174, 16.493

Previews

White Background



This preview shows how the CIELCh color 67, 8.593, 16.490 looks on a white background.

Color Contrast Check

Large Text (above 18pt) WCAG AA × Fail

Any Text WCAG AA × Fail

Large Text (above 18pt) WCAG AAA × Fail

Any Text WCAG AAA × Fail

Black Background



This preview shows how the CIE LCh color 67, 8.593, 16.490 looks on a black background.

Color Contrast Check

Large Text (above 18pt) WCAG AA ✓ Pass

Any Text WCAG AA ✓ Pass

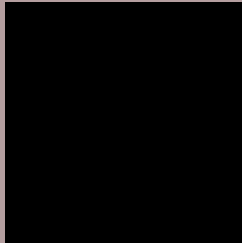
Large Text (above 18pt) WCAG AAA ✓ Pass

Any Text WCAG AAA ✓ Pass

If you want to check with other color combinations, try the [Color Contrast Checker](#).

CIELCh 67, 8.593, 16.490

Background



This preview shows how black text looks on a background with the CIELCh color 67, 8.593, 16.490.



This preview shows how white text looks on a background with the CIELCh color 67, 8.593, 16.490.

Color Blindness Simulation

Color vision deficiency is a very complex topic, and I could not describe the different causes any better than Wikipedia does, so if you want to learn more, you should check out their [article about color blindness](#).

Dichromacy



Original Color

67, 8.593, 16.490

Protanopia

67, 1.619, 39.125

Deuteranopia

67, 8.593, 16.490



Tritanopia
67, 11.950, 343.701

Trichromacy



Original Color
67, 8.593, 16.490

Protanomaly
67, 3.890, 27.750

Deuteranomaly
67, 8.593, 16.490

Tritanomaly
67, 10.243, 354.915

Monochromacy



Original Color
67, 8.593, 16.490

Achromatopsia
68, 0.008, 296.813

Achromatomaly
67, 3.116, 9.367

CSS Examples

Text

The CSS property to change the color of the text to CIELCh 67, 8.593, 16.490 is called "color". The color property can be set on classes, ids or directly on the HTML element.

This example shows how text in the color `rgb(180, 158, 159)` looks like.

```
.text, #text, p{  
    color:rgb(180, 158, 159)  
}
```

If you want to add a text shadow in that color use the text-shadow property, you can generate a text shadow directly with our [CSS Text Shadow Generator](#).

Here you see how black text with a 4 pixel rgb(180, 158, 159) colored shadow looks like.

```
.shadow{ text-shadow: 4px 4px 2px rgb(180, 158, 159) }
```

Border

The CSS property to change the border of an element to CIELCh 67, 8.593, 16.490 is called "border". The border property can be set on classes, ids or directly on the HTML element.

This example shows the color as border, it can be applied via the CSS property "border" or "border-color".

```
.border, #border, table{ border:4px solid rgb(180, 158, 159) }
```

If only the border color should be changed use the property `border-color`.

```
.border{ border-color:rgb(180, 158, 159) }
```

If you want to add a box shadow in that color use:

Here you see how a box with a 4 pixel `rgb(180, 158, 159)` colored shadow looks like.

```
.boxshadow{ -moz-box-shadow:4px 4px 4px  
4px rgb(180, 158, 159); -webkit-box-  
shadow:4px 4px 4px 4px rgb(180, 158, 159);  
box-shadow:4px 4px 4px 4px rgb(180, 158,  
159) }
```

Background

The CSS property to change the background color of an element to CIELCh 67, 8.593, 16.490 is called "background". The background property can be set on classes, ids or directly on the HTML element.

```
.background, #background, body{  
background: rgb(180, 158, 159) }
```

If only the background color should be changed can be used:

```
.background{ background-color: rgb(180,  
158, 159) }
```

This example shows the color as background, it is applied via the CSS property "background".

To optimize and compress your CSS code, you can use our [online CSS compressor and optimizer](#) based on csstidy. If you want to create a linear or radial gradient as background or border, check our [CSS Gradient Generator](#).

Hey! You found this booklet interesting? Support Converting Colors with the new Membership Option!

The pro membership hides all ads, plus gives you double the colors in the color bucket, and more awesome pro features!

[Learn more, Memberships starting at \\$2.50/m!](#)

**Follow me
on Twitter!**

@ConvertingColor