

Converting Colors

CIELCh(67, 8.706, 27.364)

Have a look what the booklet for
CIELCh(67, 8.706, 27.364) contains.

CIELCh(67, 8.706, 27.364)	3
<i>Conversions</i>	4
<i>Details</i>	6
<i>Harmonies</i>	11
<i>Previews</i>	20
<i>Color Blindness Simulation</i>	23
<i>CSS Examples</i>	26

Color

CIELCh(67, 8.706, 27.364)

Conversions

Conversions Part 1

Format	Color
Hex	B49E9C
RGB	180, 158, 156
RGB Percent	71%, 62%, 61%
CMY	0.2935, 0.3798, 0.3876
CMYK	0.00, 0.12, 0.13, 0.29
HSL	5°, 14%, 66%
HSV	5°, 13%, 71%
XYZ	37.1242, 36.6320, 36.6327
YIQ	164.3500, 13.7540, 4.0420

Conversions

Conversions Part 2

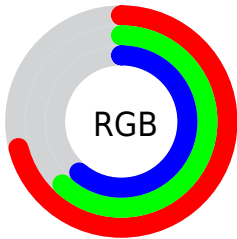
Format	Color
RYB	180, 158, 156
Decimal	11837084
CIELab	67.00, 7.73, 4.00
CIELCh	67, 8.706, 27.364
Yxy	36.6320, 0.3363, 0.3318
Android (android.graphics.Color)	4290027164 (0xFFB49E9C)
YUV	164.3500, -4.1165, 13.7251
Hunter-Lab	60.5244, 3.5699, 6.4815

Details

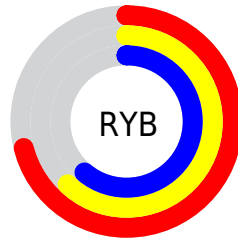
The CIELCh color $67, 8.706, 27.364$ is a light color, and the websafe version is hex 999999 . A complement of this color would be $71, 7.982, 206.731$, and the grayscale version is $68, 0.008, 296.813$.

A 20% lighter version of the original color is $87, 8.649, 30.333$, and $47, 8.571, 28.234$ is the 20% darker color. If you saturate the color by 10%, you get $62, 15.871, 27.934$, and if you desaturate by 10%, it is $72, 2.086, 26.818$.

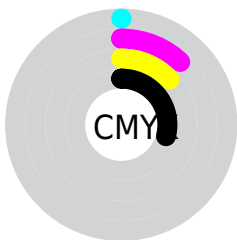
Distribution



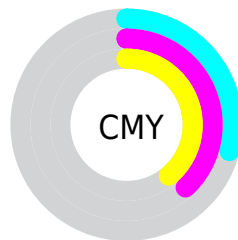
- Red (71%)
- Green (62%)
- Blue (61%)



- Red (71%)
- Yellow (62%)
- Blue (61%)



- Cyan (0%)
- Magenta (12%)
- Yellow (13%)
- Black (29%)



- Cyan (29%)
- Magenta (38%)
- Yellow (39%)

Brightness & Saturation Gradients

These gradients show how the CIELCh color 67, 8.706, 27.364 changes by changing the brightness by 10 percent. The first figure shows a shift by +10% for each color and the second figure -10%.

Similar to the brightness gradients but the following saturation gradients show a change of the CIELCh color 67, 8.706, 27.364 by changing the saturation by 10% instead.

 67, 8.706, 27.364  67, 8.706, 27.364

 100, 8.706, 27.364  57, 8.706, 27.364

 87, 8.706, 27.364  47, 8.706, 27.364


 97, 8.706, 27.364  37, 8.706, 27.364


 27, 8.706, 27.364

 17, 8.706, 27.364

 7, 8.706, 27.364

 0, 8.706, 27.364

 67, 8.706, 27.364  67, 8.706, 27.364

 62, 15.871, 27.934  72, 2.086, 26.818

58, 23.605, 28.684

77, 4.025, 206.942

54, 31.892, 29.701

81, 9.675, 206.707

50, 40.663, 31.056

86, 14.915,
206.596

46, 49.777, 32.813

91, 19.794,
206.545

43, 58.983, 34.981

40, 67.820, 37.410

95, 23.943,
197.941

39, 75.302, 39.562

38, 79.346, 40.951

Harmonies

Complementary

The Complementary color scheme is a pair of colors which are on the opposite of each other on the color wheel.



67, 8.706, 27.364



71, 7.982, 206.731

Rectangle

The Rectangle color scheme consists of four colors that form a rectangle on the color wheel.



67, 8.706, 27.364



67, 8.706, 77.364



67, 8.706, 207.364



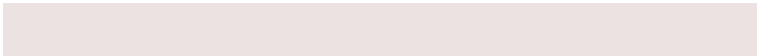
67, 8.706, 257.364

Sweetspot

The Sweet Spot groups the original color and five complimentary colors.



67, 8.705, 27.377



91, 3.119, 26.887



67, 15.149, 327.510



48, 2.222, 26.942



96, 0.011, 296.813



49, 0.007, 296.813

Same Dimension

The Same Dimension uses a secret algorithm to generate beautiful new colors.



67, 8.705, 27.377



83, 13.111, 27.526



70, 8.576, 82.164



35, 3.613, 27.184



32, 69.788, 40.784



2, 8.597, 25.134

Inverse Universe

The Inverse Universe completely reimagines the original color for something new.



71, 7.982, 206.731



90, 11.778, 206.672



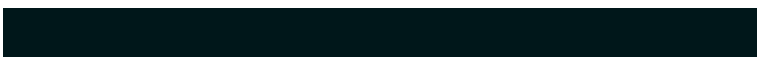
68, 8.439, 265.721



37, 3.404, 206.834



53, 30.943, 210.692



6, 8.143, 210.886

Previews

White Background



This preview shows how the CIELCh color 67, 8.706, 27.364 looks on a white background.

Color Contrast Check

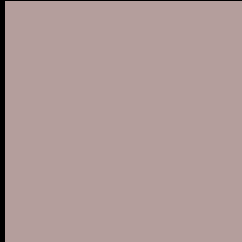
Large Text (above 18pt) WCAG AA × Fail

Any Text WCAG AA × Fail

Large Text (above 18pt) WCAG AAA × Fail

Any Text WCAG AAA × Fail

Black Background



This preview shows how the CIE LCh color 67, 8.706, 27.364 looks on a black background.

Color Contrast Check

Large Text (above 18pt) WCAG AA ✓ Pass

Any Text WCAG AA ✓ Pass

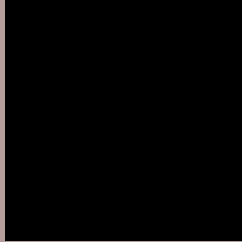
Large Text (above 18pt) WCAG AAA ✓ Pass

Any Text WCAG AAA ✓ Pass

If you want to check with other color combinations, try the [Color Contrast Checker](#).

CIELCh 67, 8.706, 27.364

Background



This preview shows how black text looks on a background with the CIELCh color 67, 8.706, 27.364.



This preview shows how white text looks on a background with the CIELCh color 67, 8.706, 27.364.

Color Blindness Simulation

Color vision deficiency is a very complex topic, and I could not describe the different causes any better than Wikipedia does, so if you want to learn more, you should check out their [article about color blindness](#).

Dichromacy



Original Color

67, 8.706, 27.364

Protanopia

67, 2.521, 60.247

Deuteranopia

67, 9.104, 27.081



Tritanopia
67, 11.959, 346.999

Trichromacy



Original Color
67, 8.706, 27.364

Protanomaly
67, 4.564, 40.833

Deuteranomaly
67, 9.104, 27.081

Tritanomaly
67, 10.034, 357.778

Monochromacy



Original Color
67, 8.706, 27.364

Achromatopsia
68, 0.008, 296.813

Achromatomaly
68, 3.114, 29.678

CSS Examples

Text

The CSS property to change the color of the text to CIELCh 67, 8.706, 27.364 is called "color". The color property can be set on classes, ids or directly on the HTML element.

This example shows how text in the color `rgb(180, 158, 156)` looks like.

```
.text, #text, p{  
    color:rgb(180, 158, 156)  
}
```

If you want to add a text shadow in that color use the text-shadow property, you can generate a text shadow directly with our [CSS Text Shadow Generator](#).

Here you see how black text with a 4 pixel rgb(180, 158, 156) colored shadow looks like.

```
.shadow{ text-shadow: 4px 4px 2px rgb(180, 158, 156) }
```

Border

The CSS property to change the border of an element to CIELCh 67, 8.706, 27.364 is called "border". The border property can be set on classes, ids or directly on the HTML element.

This example shows the color as border, it can be applied via the CSS property "border" or "border-color".

```
.border, #border, table{ border:4px solid rgb(180, 158, 156) }
```

If only the border color should be changed use the property `border-color`.

```
.border{ border-color:rgb(180, 158, 156) }
```

If you want to add a box shadow in that color use:

Here you see how a box with a 4 pixel `rgb(180, 158, 156)` colored shadow looks like.

```
.boxshadow{ -moz-box-shadow:4px 4px 4px  
4px rgb(180, 158, 156); -webkit-box-  
shadow:4px 4px 4px 4px rgb(180, 158, 156);  
box-shadow:4px 4px 4px 4px rgb(180, 158,  
156) }
```

Background

The CSS property to change the background color of an element to CIELCh 67, 8.706, 27.364 is called "background". The background property can be set on classes, ids or directly on the HTML element.

```
.background, #background, body{  
background: rgb(180, 158, 156) }
```

If only the background color should be changed can be used:

```
.background{ background-color: rgb(180,  
158, 156) }
```

This example shows the color as background, it is applied via the CSS property "background".

To optimize and compress your CSS code, you can use our [online CSS compressor and optimizer](#) based on csstidy. If you want to create a linear or radial gradient as background or border, check our [CSS Gradient Generator](#).

Hey! You found this booklet interesting? Support Converting Colors with the new Membership Option!

The pro membership hides all ads, plus gives you double the colors in the color bucket, and more awesome pro features!

[Learn more, Memberships starting at \\$2.50/m!](#)

**Follow me
on Twitter!**

@ConvertingColor