

Converting Colors

CIELCh(67, 9.485, 359.915)

Have a look what the booklet for
CIELCh(67, 9.485, 359.915) contains.

CIELCh(67, 9.485, 359.915)	3
<i>Conversions</i>	4
<i>Details</i>	6
<i>Harmonies</i>	11
<i>Previews</i>	20
<i>Color Blindness Simulation</i>	23
<i>CSS Examples</i>	26

Color

CIELCh(67, 9.485, 359.915)

Conversions

Conversions Part 1

Format	Color
Hex	B49DA3
RGB	180, 157, 163
RGB Percent	71%, 62%, 64%
CMY	0.2927, 0.3830, 0.3594
CMYK	0.00, 0.13, 0.09, 0.29
HSL	344°, 13%, 66%
HSV	344°, 13%, 71%
XYZ	37.6609, 36.6320, 39.8978
YIQ	164.5610, 11.7820, 6.7420

Conversions

Conversions Part 2

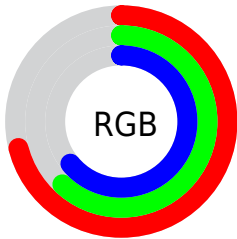
Format	Color
RYB	180, 157, 163
Decimal	11836835
CIELab	67.00, 9.48, -0.01
CIELCh	67, 9.485, 359.915
Yxy	36.6320, 0.3298, 0.3208
Android (android.graphics.Color)	4290026915 (0xFFB49DA3)
YUV	164.5610, -0.7696, 13.5400
Hunter-Lab	60.5244, 5.1530, 3.2830

Details

The CIELCh color **67, 9.485, 359.915** is a light color, and the websafe version is hex **999999**. A complement of this color would be **72, 9.100, 177.620**, and the grayscale version is **68, 0.008, 296.813**.

A 20% lighter version of the original color is **87, 9.313, 0.439**, and **47, 9.214, 1.938** is the 20% darker color. If you saturate the color by 10%, you get **62, 17.273, 1.085**, and if you desaturate by 10%, it is **72, 2.005, 358.762**.

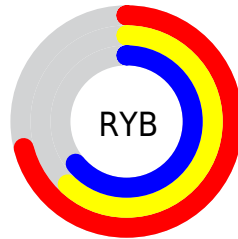
Distribution



Red (71%)

Green (62%)

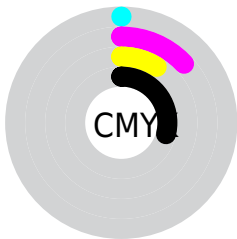
Blue (64%)



Red (71%)

Yellow (62%)

Blue (64%)

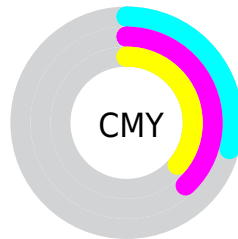


Cyan (0%)

Magenta (13%)

Yellow (9%)

Black (29%)



Cyan (29%)

Magenta (38%)

Yellow (36%)

Brightness & Saturation Gradients

These gradients show how the CIELCh color 67, 9.485, 359.915 changes by changing the brightness by 10 percent. The first figure shows a shift by +10% for each color and the second figure -10%.

Similar to the brightness gradients but the following saturation gradients show a change of the CIELCh color 67, 9.485, 359.915 by changing the saturation by 10% instead.

■ 67, 9.485, 359.915

■ 67, 9.485, 359.915

■ 100, 9.485,
359.915

■ 57, 9.485, 359.915

■ 87, 9.485, 359.915

■ 47, 9.485, 359.915

■ 97, 9.485, 359.915

■ 37, 9.485, 359.915

■ 27, 9.485, 359.915

■ 17, 9.485, 359.915

■ 7, 9.485, 359.915

■ 0, 9.485, 359.915

■ 67, 9.485, 359.915

■ 67, 9.485, 359.915

■ 62, 17.273, 1.085

■ 72, 2.005, 358.762

57, 25.295, 2.445

77, 5.128, 178.220

53, 33.407, 4.081

82, 11.913,
177.411

49, 41.382, 6.092

88, 18.363,
176.720

45, 48.915, 8.610

42, 55.664, 11.791

93, 24.501,
176.102

40, 61.361, 15.789

95, 25.318,
184.067

38, 65.959, 20.666

38, 68.970, 24.455

95, 23.888,
197.945

Harmonies

Complementary

The Complementary color scheme is a pair of colors which are on the opposite of each other on the color wheel.



67, 9.485, 359.915



72, 9.100, 177.620

Rectangle

The Rectangle color scheme consists of four colors that form a rectangle on the color wheel.



67, 9.485, 359.915



67, 9.485, 49.915



67, 9.485, 179.915



67, 9.485, 229.915

Sweetspot

The Sweet Spot groups the original color and five complimentary colors.



67, 9.483, 359.922



90, 3.612, 358.956



67, 14.232, 317.303



48, 2.569, 359.050



96, 0.011, 296.813



49, 0.007, 296.813

Same Dimension

The Same Dimension uses a secret algorithm to generate beautiful new colors.



67, 9.483, 359.922



84, 13.883, 0.199



68, 7.506, 42.923



35, 4.143, 359.550



32, 60.771, 23.645



2, 9.575, 3.144

Inverse Universe

The Inverse Universe completely reimagines the original color for something new.



67, 9.483, 359.922



84, 13.883, 0.199



70, 6.947, 224.072



35, 4.143, 359.550



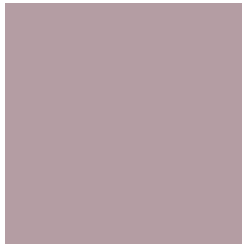
32, 60.771, 23.645



2, 9.575, 3.144

Previews

White Background



This preview shows how the CIELCh color 67, 9.485, 359.915 looks on a white background.

Color Contrast Check

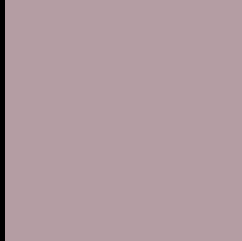
Large Text (above 18pt) WCAG AA × Fail

Any Text WCAG AA × Fail

Large Text (above 18pt) WCAG AAA × Fail

Any Text WCAG AAA × Fail

Black Background



This preview shows how the CIE LCh color 67, 9.485, 359.915 looks on a black background.

Color Contrast Check

Large Text (above 18pt) WCAG AA ✓ Pass

Any Text WCAG AA ✓ Pass

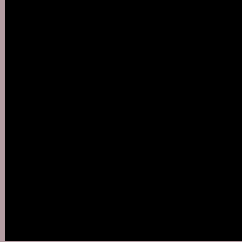
Large Text (above 18pt) WCAG AAA ✓ Pass

Any Text WCAG AAA ✓ Pass

If you want to check with other color combinations, try the [Color Contrast Checker](#).

CIELCh 67, 9.485, 359.915

Background



This preview shows how black text looks on a background with the CIELCh color 67, 9.485, 359.915.



This preview shows how white text looks on a background with the CIELCh color 67, 9.485, 359.915.

Color Blindness Simulation

Color vision deficiency is a very complex topic, and I could not describe the different causes any better than Wikipedia does, so if you want to learn more, you should check out their [article about color blindness](#).

Dichromacy



Original Color

67, 9.485, 359.915

Protanopia

67, 2.503, 317.327

Deuteranopia

67, 8.567, 1.459



Tritanopia
67, 11.950, 343.701

Trichromacy



Original Color
67, 9.485, 359.915

Protanomaly
67, 5.044, 346.644

Deuteranomaly
67, 8.567, 1.459

Tritanomaly
67, 11.350, 348.214

Monochromacy



Original Color
67, 9.485, 359.915

Achromatopsia
68, 0.008, 296.813

Achromatomaly
67, 3.622, 1.924

CSS Examples

Text

The CSS property to change the color of the text to CIELCh 67, 9.485, 359.915 is called "color". The color property can be set on classes, ids or directly on the HTML element.

This example shows how text in the color `rgb(180, 157, 163)` looks like.

```
.text, #text, p{  
    color:rgb(180, 157, 163)  
}
```

If you want to add a text shadow in that color use the text-shadow property, you can generate a text shadow directly with our [CSS Text Shadow Generator](#).

Here you see how black text with a 4 pixel rgb(180, 157, 163) colored shadow looks like.

```
.shadow{ text-shadow: 4px 4px 2px rgb(180, 157, 163) }
```

Border

The CSS property to change the border of an element to CIELCh 67, 9.485, 359.915 is called "border". The border property can be set on classes, ids or directly on the HTML element.

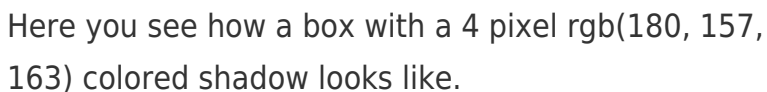
This example shows the color as border, it can be applied via the CSS property "border" or "border-color".

```
.border, #border, table{ border:4px solid rgb(180, 157, 163) }
```

If only the border color should be changed use the property `border-color`.

```
.border{ border-color:rgb(180, 157, 163) }
```

If you want to add a box shadow in that color use:



Here you see how a box with a 4 pixel `rgb(180, 157, 163)` colored shadow looks like.

```
.boxshadow{ -moz-box-shadow:4px 4px 4px 4px rgb(180, 157, 163); -webkit-box-shadow:4px 4px 4px 4px rgb(180, 157, 163); box-shadow:4px 4px 4px 4px rgb(180, 157, 163) }
```

Background

The CSS property to change the background color of an element to CIELCh 67, 9.485, 359.915 is called "background". The background property can be set on classes, ids or directly on the HTML element.

```
.background, #background, body{  
background: rgb(180, 157, 163) }
```

If only the background color should be changed can be used:

```
.background{ background-color: rgb(180,  
157, 163) }
```

This example shows the color as background, it is applied via the CSS property "background".

To optimize and compress your CSS code, you can use our [online CSS compressor and optimizer](#) based on csstidy. If you want to create a linear or radial gradient as background or border, check our [CSS Gradient Generator](#).

Hey! You found this booklet interesting? Support Converting Colors with the new Membership Option!

The pro membership hides all ads, plus gives you double the colors in the color bucket, and more awesome pro features!

[Learn more, Memberships starting at \\$2.50/m!](#)

**Follow me
on Twitter!**

@ConvertingColor