

Converting Colors

CIELCh(67, 90.130, 16.652)

Have a look what the booklet for
CIELCh(67, 90.130, 16.652) contains.

CIELCh(58, 74.809, 9.669)	3
<i>Conversions</i>	4
<i>Details</i>	6
<i>Harmonies</i>	11
<i>Previews</i>	20
<i>Color Blindness Simulation</i>	23
<i>CSS Examples</i>	26

Color

CIELCh(58, 74.809, 9.669)

Conversions

Conversions Part 1

Format	Color
Hex	FE3F79
RGB	254, 63, 121
RGB Percent	100%, 25%, 47%
CMY	0.0044, 0.7538, 0.5250
CMYK	0.00, 0.75, 0.52, 0.00
HSL	342°, 99%, 62%
HSV	342°, 75%, 100%
XYZ	46.0522, 25.9610, 20.7113
YIQ	126.7210, 95.2180, 58.5300

Conversions

Conversions Part 2

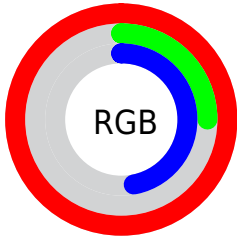
Format	Color
R_{YB}	254, 63, 121
Decimal	16662393
CIE Lab	58.00, 73.75, 12.56
CIE LCh	58, 74.809, 9.669
Yxy	25.9610, 0.4967, 0.2800
Android (android.graphics.Color)	4294852473 (0xFFFE3F79)
YUV	126.7210, -2.8205, 111.6237
Hunter-Lab	50.9519, 72.1689, 11.5657

Details

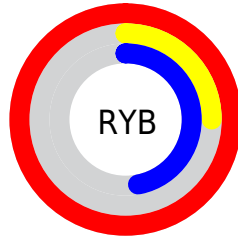
The CIELCh color **58, 74.809, 9.669** is a dark color, and the websafe version is hex **FF3366**. The color can be described as middle washed rose. A complement of this color would be **90, 61.363, 166.083**, and the grayscale version is **53, 0.007, 296.813**.

A 20% lighter version of the original color is **69, 53.872, 358.249**, and **41, 68.515, 13.530** is the 20% darker color. If you saturate the color by 10%, you get **55, 81.069, 13.969**, and if you desaturate by 10%, it is **62, 66.858, 6.265**.

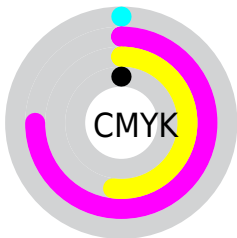
Distribution



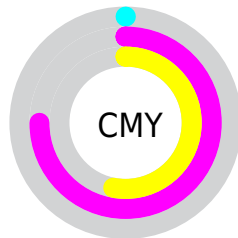
- Red (100%)
- Green (25%)
- Blue (47%)



- Red (100%)
- Yellow (25%)
- Blue (47%)



- Cyan (0%)
- Magenta (75%)
- Yellow (52%)
- Black (0%)



- Cyan (0%)
- Magenta (75%)
- Yellow (53%)

Brightness & Saturation Gradients

These gradients show how the CIELCh color 58, 74.809, 9.669 changes by changing the brightness by 10 percent. The first figure shows a shift by +10% for each color and the second figure -10%.

Similar to the brightness gradients but the following saturation gradients show a change of the CIELCh color 58, 74.809, 9.669 by changing the saturation by 10% instead.

 58, 74.809, 9.669  58, 74.809, 9.669

 100, 74.809, 9.669  48, 74.809, 9.669


 78, 74.809, 9.669  38, 74.809, 9.669

 88, 74.809, 9.669  28, 74.809, 9.669

 98, 74.809, 9.669  18, 74.809, 9.669

 8, 74.809, 9.669

 0, 74.809, 9.669

 58, 74.809, 9.669  58, 74.809, 9.669

 55, 81.069, 13.969  62, 66.858, 6.265

 54, 85.767, 19.207  66, 57.525, 3.585

■ 54, 87.751, 21.860

■ 71, 47.287, 1.456

■ 77, 36.621,
359.732

■ 83, 25.901,
358.303

■ 90, 15.379,
357.086

■ 96, 5.203, 355.979

■ 100, 0.389,
201.083

Harmonies

Complementary

The Complementary color scheme is a pair of colors which are on the opposite of each other on the color wheel.



58, 74.809, 9.669



90, 61.363, 166.083

Rectangle

The Rectangle color scheme consists of four colors that form a rectangle on the color wheel.



58, 74.809, 9.669



58, 74.809, 59.669



58, 74.809, 189.669



58, 74.809, 239.669

Sweetspot

The Sweet Spot groups the original color and five complimentary colors.



58, 74.805, 9.671



85, 23.572, 358.011



54, 105.195, 317.742



43, 16.409, 358.481



0, 0.000, 0.000



53, 0.007, 296.813

Same Dimension

The Same Dimension uses a secret algorithm to generate beautiful new colors.



58, 74.805, 9.671



55, 83.748, 16.346



62, 76.374, 40.984



50, 5.681, 356.449



40, 70.506, 20.785



10, 31.440, 12.378

Inverse Universe

The Inverse Universe completely reimagines the original color for something new.



58, 74.805, 9.671



55, 83.748, 16.346



81, 40.398, 224.988



50, 5.681, 356.449



40, 70.506, 20.785



10, 31.440, 12.378

Previews

White Background



This preview shows how the CIELCh color 58, 74.809, 9.669 looks on a white background.

Color Contrast Check

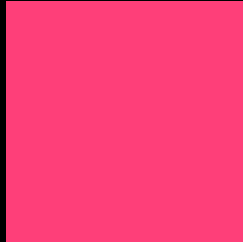
Large Text (above 18pt) WCAG AA ✓ Pass

Any Text WCAG AA ✗ Fail

Large Text (above 18pt) WCAG AAA ✗ Fail

Any Text WCAG AAA ✗ Fail

Black Background



This preview shows how the CIELCh color 58, 74.809, 9.669 looks on a black background.

Color Contrast Check

Large Text (above 18pt) WCAG AA ✓ Pass

Any Text WCAG AA ✓ Pass

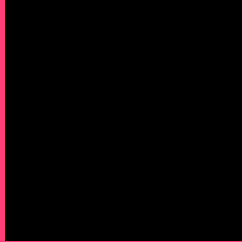
Large Text (above 18pt) WCAG AAA ✓ Pass

Any Text WCAG AAA × Fail

If you want to check with other color combinations, try the [Color Contrast Checker](#).

CIELCh 58, 74.809, 9.669

Background



This preview shows how black text looks on a background with the CIELCh color 58, 74.809, 9.669.

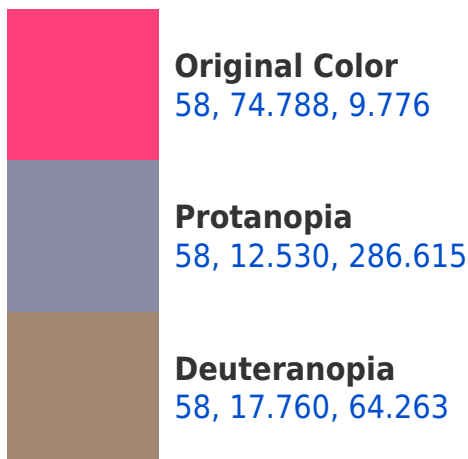


This preview shows how white text looks on a background with the CIELCh color 58, 74.809, 9.669.

Color Blindness Simulation

Color vision deficiency is a very complex topic, and I could not describe the different causes any better than Wikipedia does, so if you want to learn more, you should check out their [article about color blindness](#).

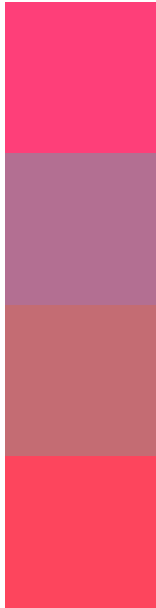
Dichromacy





Tritanopia
58, 77.395, 29.608

Trichromacy



Original Color
58, 74.788, 9.776

Protanomaly
55, 32.830, 346.475

Deuteranomaly
56, 37.455, 18.226

Tritanomaly
58, 75.539, 22.599

Monochromacy



Original Color
58, 74.788, 9.776

Achromatopsia
53, 0.007, 296.813

Achromatomaly
52, 30.409, 0.390

CSS Examples

Text

The CSS property to change the color of the text to CIELCh 58, 74.809, 9.669 is called "color". The color property can be set on classes, ids or directly on the HTML element.

This example shows how text in the color `rgb(254, 63, 121)` looks like.

```
.text, #text, p{  
    color:rgb(254, 63, 121)  
}
```

If you want to add a text shadow in that color use the text-shadow property, you can generate a text shadow directly with our [CSS Text Shadow Generator](#).

Here you see how black text with a 4 pixel rgb(254, 63, 121) colored shadow looks like.

```
.shadow{ text-shadow: 4px 4px 2px rgb(254, 63, 121) }
```

Border

The CSS property to change the border of an element to CIELCh 58, 74.809, 9.669 is called "border". The border property can be set on classes, ids or directly on the HTML element.

This example shows the color as border, it can be applied via the CSS property "border" or "border-color".

```
.border, #border, table{ border:4px solid rgb(254, 63, 121) }
```

If only the border color should be changed use the property `border-color`.

```
.border{ border-color:rgb(254, 63, 121) }
```

If you want to add a box shadow in that color use:

Here you see how a box with a 4 pixel `rgb(254, 63, 121)` colored shadow looks like.

```
.boxshadow{ -moz-box-shadow:4px 4px 4px  
4px rgb(254, 63, 121); -webkit-box-  
shadow:4px 4px 4px 4px rgb(254, 63, 121);  
box-shadow:4px 4px 4px 4px rgb(254, 63,  
121) }
```

Background

The CSS property to change the background color of an element to CIELCh 58, 74.809, 9.669 is called "background". The background property can be set on classes, ids or directly on the HTML element.

```
.background, #background, body{  
background: rgb(254, 63, 121) }
```

If only the background color should be changed can be used:

```
.background{ background-color: rgb(254, 63,  
121) }
```

This example shows the color as background, it is applied via the CSS property "background".

To optimize and compress your CSS code, you can use our [online CSS compressor and optimizer](#) based on csstidy. If you want to create a linear or radial gradient as background or border, check our [CSS Gradient Generator](#).

Hey! You found this booklet interesting? Support Converting Colors with the new Membership Option!

The pro membership hides all ads, plus gives you double the colors in the color bucket, and more awesome pro features!

[Learn more, Memberships starting at \\$2.50/m!](#)

**Follow me
on Twitter!**

@ConvertingColor