

Converting Colors

CIELCh(67, 94.163, 17.584)

Have a look what the booklet for
CIELCh(67, 94.163, 17.584) contains.

CIELCh(57, 77.635, 9.870)	3
<i>Conversions</i>	4
<i>Details</i>	6
<i>Harmonies</i>	11
<i>Previews</i>	20
<i>Color Blindness Simulation</i>	23
<i>CSS Examples</i>	26

Color

CIELCh(57, 77.635, 9.870)

Conversions

Conversions Part 1

Format	Color
Hex	FE3476
RGB	254, 52, 118
RGB Percent	100%, 20%, 46%
CMY	0.0024, 0.7950, 0.5391
CMYK	0.00, 0.79, 0.54, 0.00
HSL	341°, 99%, 60%
HSV	341°, 79%, 100%
XYZ	45.5018, 24.9227, 19.4070
YIQ	119.9220, 99.2060, 63.3500

Conversions

Conversions Part 2

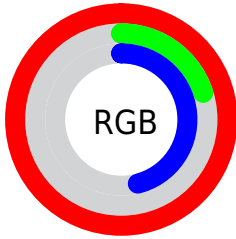
Format	Color
R_{YB}	254, 52, 118
Decimal	16659574
CIE _{Lab}	57.00, 76.49, 13.31
CIE _{LCh}	57, 77.635, 9.870
Yxy	24.9227, 0.5065, 0.2774
Android (android.graphics.Color)	4294849654 (0xFFFE3476)
YUV	119.9220, -0.9475, 117.5864
Hunter-Lab	49.9226, 75.3287, 11.8974

Details

The CIELCh color **57, 77.635, 9.870** is a dark color, and the websafe version is hex **FF0066**. The color can be described as middle washed rose. A complement of this color would be **90, 64.775, 164.003**, and the grayscale version is **50, 0.007, 296.813**.

A 20% lighter version of the original color is **67, 57.296, 357.803**, and **40, 68.490, 14.836** is the 20% darker color. If you saturate the color by 10%, you get **55, 82.940, 14.488**, and if you desaturate by 10%, it is **60, 70.544, 6.189**.

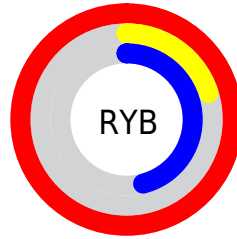
Distribution



Red (100%)

Green (20%)

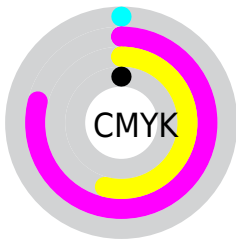
Blue (46%)



Red (100%)

Yellow (20%)

Blue (46%)

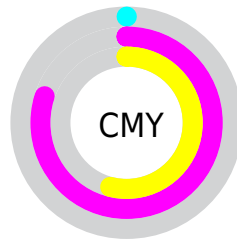


Cyan (0%)

Magenta (79%)

Yellow (54%)

Black (0%)



Cyan (0%)

Magenta (80%)

Yellow (54%)

Brightness & Saturation Gradients

These gradients show how the CIELCh color 57, 77.635, 9.870 changes by changing the brightness by 10 percent. The first figure shows a shift by +10% for each color and the second figure -10%.

Similar to the brightness gradients but the following saturation gradients show a change of the CIELCh color 57, 77.635, 9.870 by changing the saturation by 10% instead.

 57, 77.635, 9.870

 57, 77.635, 9.870

 100, 77.635, 9.870

 47, 77.635, 9.870

 77, 77.635, 9.870

 37, 77.635, 9.870

 87, 77.635, 9.870

 27, 77.635, 9.870

 97, 77.635, 9.870

 17, 77.635, 9.870

 7, 77.635, 9.870

 0, 77.635, 9.870

 57, 77.635, 9.870

 57, 77.635, 9.870

 55, 82.940, 14.488

 60, 70.544, 6.189

 54, 86.920, 19.945

 64, 61.838, 3.294

■ 54, 87.143, 20.246

■ 69, 51.958, 1.003

■ 75, 41.413,
359.160

■ 81, 30.635,
357.642

■ 87, 19.935,
356.361

■ 94, 9.510, 355.240

100, 0.208,
202.581

Harmonies

Complementary

The Complementary color scheme is a pair of colors which are on the opposite of each other on the color wheel.



57, 77.635, 9.870



90, 64.775, 164.003

Rectangle

The Rectangle color scheme consists of four colors that form a rectangle on the color wheel.



57, 77.635, 9.870



57, 77.635, 59.870



57, 77.635, 189.870



57, 77.635, 239.870

Sweetspot

The Sweet Spot groups the original color and five complimentary colors.



57, 77.631, 9.872



84, 24.825, 356.919



52, 109.349, 317.187



43, 17.142, 357.385



0, 0.000, 0.000



53, 0.007, 296.813

Same Dimension

The Same Dimension uses a secret algorithm to generate beautiful new colors.



57, 77.631, 9.872



54, 85.377, 17.463



60, 82.111, 40.621



50, 5.733, 355.246



40, 69.954, 19.169



10, 31.378, 11.098

Inverse Universe

The Inverse Universe completely reimagines the original color for something new.



57, 77.631, 9.872



54, 85.377, 17.463



82, 41.451, 222.985



50, 5.733, 355.246



40, 69.954, 19.169



10, 31.378, 11.098

Previews

White Background



This preview shows how the CIELCh color 57, 77.635, 9.870 looks on a white background.

Color Contrast Check

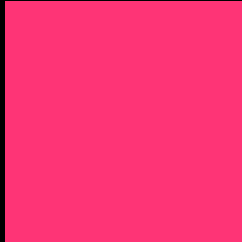
Large Text (above 18pt) WCAG AA ✓ Pass

Any Text WCAG AA ✗ Fail

Large Text (above 18pt) WCAG AAA ✗ Fail

Any Text WCAG AAA ✗ Fail

Black Background



This preview shows how the CIELCh color 57, 77.635, 9.870 looks on a black background.

Color Contrast Check

Large Text (above 18pt) WCAG AA ✓ Pass

Any Text WCAG AA ✓ Pass

Large Text (above 18pt) WCAG AAA ✓ Pass

Any Text WCAG AAA × Fail

If you want to check with other color combinations, try the [Color Contrast Checker](#).

CIELCh 57, 77.635, 9.870

Background



This preview shows how black text looks on a background with the CIELCh color 57, 77.635, 9.870.

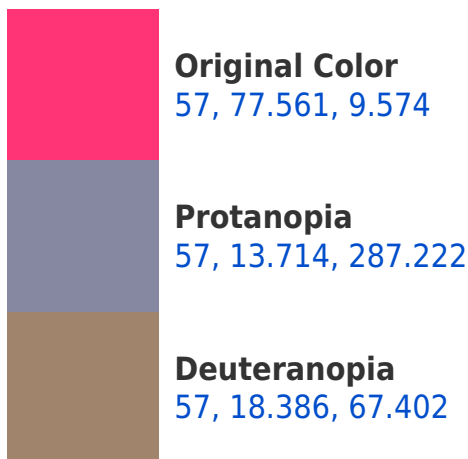


This preview shows how white text looks on a background with the CIELCh color 57, 77.635, 9.870.

Color Blindness Simulation

Color vision deficiency is a very complex topic, and I could not describe the different causes any better than Wikipedia does, so if you want to learn more, you should check out their [article about color blindness](#).

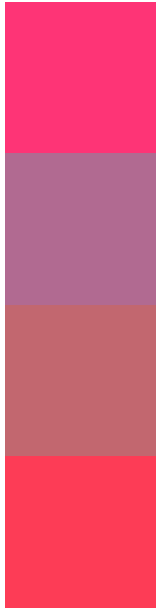
Dichromacy





Tritanopia
57, 81.256, 31.152

Trichromacy



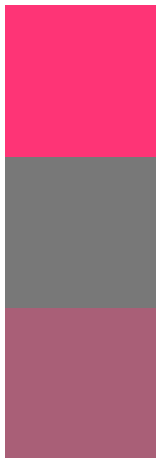
Original Color
57, 77.561, 9.574

Protanomaly
54, 35.025, 344.769

Deuteranomaly
54, 38.928, 17.991

Tritanomaly
57, 78.792, 23.725

Monochromacy



Original Color
57, 77.561, 9.574

Achromatopsia
50, 0.007, 296.813

Achromatomaly
49, 33.024, 359.606

CSS Examples

Text

The CSS property to change the color of the text to CIELCh 57, 77.635, 9.870 is called "color". The color property can be set on classes, ids or directly on the HTML element.

This example shows how text in the color `rgb(254, 52, 118)` looks like.

```
.text, #text, p{  
    color:rgb(254, 52, 118)  
}
```

If you want to add a text shadow in that color use the text-shadow property, you can generate a text shadow directly with our [CSS Text Shadow Generator](#).

Here you see how black text with a 4 pixel rgb(254, 52, 118) colored shadow looks like.

```
.shadow{ text-shadow: 4px 4px 2px rgb(254, 52, 118) }
```

Border

The CSS property to change the border of an element to CIELCh 57, 77.635, 9.870 is called "border". The border property can be set on classes, ids or directly on the HTML element.

This example shows the color as border, it can be applied via the CSS property "border" or "border-color".

```
.border, #border, table{ border:4px solid rgb(254, 52, 118) }
```

If only the border color should be changed use the property `border-color`.

```
.border{ border-color:rgb(254, 52, 118) }
```

If you want to add a box shadow in that color use:

Here you see how a box with a 4 pixel `rgb(254, 52, 118)` colored shadow looks like.

```
.boxshadow{ -moz-box-shadow:4px 4px 4px  
4px rgb(254, 52, 118); -webkit-box-  
shadow:4px 4px 4px 4px rgb(254, 52, 118);  
box-shadow:4px 4px 4px 4px rgb(254, 52,  
118) }
```

Background

The CSS property to change the background color of an element to CIELCh 57, 77.635, 9.870 is called "background". The background property can be set on classes, ids or directly on the HTML element.

```
.background, #background, body{  
background: rgb(254, 52, 118) }
```

If only the background color should be changed can be used:

```
.background{ background-color: rgb(254, 52,  
118) }
```

This example shows the color as background, it is applied via the CSS property "background".

To optimize and compress your CSS code, you can use our [online CSS compressor and optimizer](#) based on csstidy. If you want to create a linear or radial gradient as background or border, check our [CSS Gradient Generator](#).

Hey! You found this booklet interesting? Support Converting Colors with the new Membership Option!

The pro membership hides all ads, plus gives you double the colors in the color bucket, and more awesome pro features!

[Learn more, Memberships starting at \\$2.50/m!](#)

**Follow me
on Twitter!**

@ConvertingColor