

Converting Colors

CIELCh(68, 10.065, 39.174)

Have a look what the booklet for
CIELCh(68, 10.065, 39.174) contains.

CIELCh(68, 10.051, 39.175)	3
<i>Conversions</i>	4
<i>Details</i>	6
<i>Harmonies</i>	11
<i>Previews</i>	20
<i>Color Blindness Simulation</i>	23
<i>CSS Examples</i>	26

Color

CIELCh(68, 10.051, 39.175)

Conversions

Conversions Part 1

Format	Color
Hex	B9A19B
RGB	185, 161, 155
RGB Percent	73%, 63%, 61%
CMY	0.2761, 0.3701, 0.3937
CMYK	0.00, 0.13, 0.16, 0.28
HSL	12°, 18%, 67%
HSV	12°, 16%, 72%
XYZ	38.4718, 37.9720, 36.1424
YIQ	167.4920, 16.2300, 3.2220

Conversions

Conversions Part 2

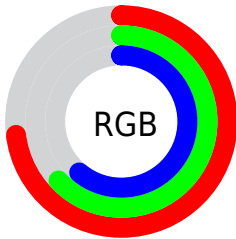
Format	Color
RYB	185, 163, 155
Decimal	12165531
CIELab	68.00, 7.79, 6.35
CIElCh	68, 10.051, 39.175
Yxy	37.9720, 0.3417, 0.3373
Android (android.graphics.Color)	4290355611 (0xFFB9A19B)
YUV	167.4920, -6.1586, 15.3545
Hunter-Lab	61.6215, 3.6045, 8.3601

Details

The CIELCh color **68, 10.051, 39.175** is a light color, and the websafe version is hex **999999**. A complement of this color would be **71, 9.057, 220.085**, and the grayscale version is **69, 0.009, 296.813**.

A 20% lighter version of the original color is **88, 9.989, 41.264**, and **48, 10.298, 36.925** is the 20% darker color. If you saturate the color by 10%, you get **64, 16.922, 39.194**, and if you desaturate by 10%, it is **72, 3.708, 39.230**.

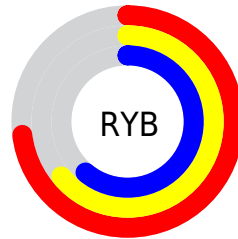
Distribution



Red (73%)

Green (63%)

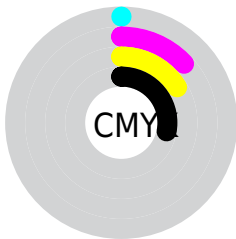
Blue (61%)



Red (73%)

Yellow (64%)

Blue (61%)

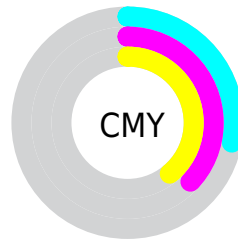


Cyan (0%)

Magenta (13%)

Yellow (16%)

Black (28%)



Cyan (28%)

Magenta (37%)

Yellow (39%)


Brightness & Saturation Gradients

These gradients show how the CIELCh color 68, 10.051, 39.175 changes by changing the brightness by 10 percent. The first figure shows a shift by +10% for each color and the second figure -10%.

Similar to the brightness gradients but the following saturation gradients show a change of the CIELCh color 68, 10.051, 39.175 by changing the saturation by 10% instead.

 68, 10.051, 39.175

 68, 10.051, 39.175

 100, 10.051,
39.175

 58, 10.051, 39.175

 88, 10.051, 39.175

 48, 10.051, 39.175

 98, 10.051, 39.175

 38, 10.051, 39.175

 28, 10.051, 39.175

 18, 10.051, 39.175

 8, 10.051, 39.175

 0, 10.051, 39.175

 68, 10.051, 39.175

 68, 10.051, 39.175

 64, 16.922, 39.194

 72, 3.708, 39.230

60, 24.358, 39.338

77, 2.149, 219.823

56, 32.371, 39.664

81, 7.573, 219.932

52, 40.929, 40.208

85, 12.610,
220.231

49, 49.928, 40.982

90, 17.309,
220.576

46, 59.122, 41.935

43, 67.953, 42.850

94, 20.908,
206.406

41, 75.288, 43.223

96, 22.674,
198.020

41, 77.845, 43.507

Harmonies

Complementary

The Complementary color scheme is a pair of colors which are on the opposite of each other on the color wheel.



68, 10.051, 39.175



71, 9.057, 220.085

Rectangle

The Rectangle color scheme consists of four colors that form a rectangle on the color wheel.



68, 10.051, 39.175



68, 10.051, 89.175



68, 10.051, 219.175



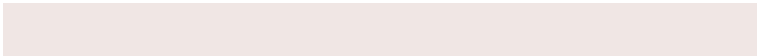
68, 10.051, 269.175

Sweetspot

The Sweet Spot groups the original color and five complimentary colors.



68, 10.050, 39.188



92, 3.655, 39.219



67, 17.386, 331.523



49, 2.499, 39.227



97, 0.011, 296.813



50, 0.007, 296.813

Same Dimension

The Same Dimension uses a secret algorithm to generate beautiful new colors.



68, 10.050, 39.188



85, 14.721, 39.178



72, 11.912, 91.699



37, 3.393, 39.227



34, 68.191, 43.750



3, 9.330, 33.443

Inverse Universe

The Inverse Universe completely reimagines the original color for something new.



71, 9.057, 220.085



89, 12.983, 220.224



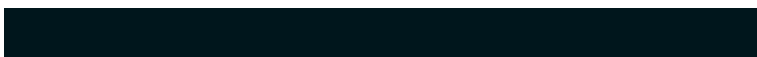
67, 11.947, 275.888



38, 3.204, 219.850



48, 30.336, 235.022



6, 8.539, 229.355

Previews

White Background



This preview shows how the CIELCh color 68, 10.051, 39.175 looks on a white background.

Color Contrast Check

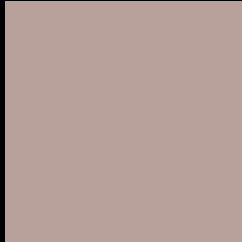
Large Text (above 18pt) WCAG AA × Fail

Any Text WCAG AA × Fail

Large Text (above 18pt) WCAG AAA × Fail

Any Text WCAG AAA × Fail

Black Background



This preview shows how the CIE LCh color 68, 10.051, 39.175 looks on a black background.

Color Contrast Check

Large Text (above 18pt) WCAG AA ✓ Pass

Any Text WCAG AA ✓ Pass

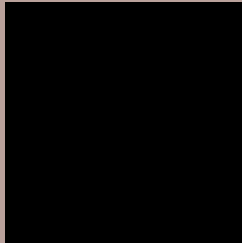
Large Text (above 18pt) WCAG AAA ✓ Pass

Any Text WCAG AAA ✓ Pass

If you want to check with other color combinations, try the [Color Contrast Checker](#).

CIELCh 68, 10.051, 39.175

Background



This preview shows how black text looks on a background with the CIELCh color 68, 10.051, 39.175.



This preview shows how white text looks on a background with the CIELCh color 68, 10.051, 39.175.

Color Blindness Simulation

Color vision deficiency is a very complex topic, and I could not describe the different causes any better than Wikipedia does, so if you want to learn more, you should check out their [article about color blindness](#).

Dichromacy



Original Color

68, 10.051, 39.175

Protanopia

68, 4.954, 81.666

Deuteranopia

68, 10.655, 35.092



Tritanopia
68, 13.182, 347.896

Trichromacy



Original Color
68, 10.051, 39.175

Protanomaly
68, 6.365, 56.747

Deuteranomaly
68, 10.264, 35.641

Tritanomaly
68, 10.945, 2.943

Monochromacy



Original Color
68, 10.051, 39.175

Achromatopsia
68, 0.008, 296.813

Achromatomaly
68, 3.477, 47.722

CSS Examples

Text

The CSS property to change the color of the text to CIELCh 68, 10.051, 39.175 is called "color". The color property can be set on classes, ids or directly on the HTML element.

This example shows how text in the color `rgb(185, 161, 155)` looks like.

```
.text, #text, p{  
    color:rgb(185, 161, 155)  
}
```

If you want to add a text shadow in that color use the text-shadow property, you can generate a text shadow directly with our [CSS Text Shadow Generator](#).

Here you see how black text with a 4 pixel rgb(185, 161, 155) colored shadow looks like.

```
.shadow{ text-shadow: 4px 4px 2px rgb(185, 161, 155) }
```

Border

The CSS property to change the border of an element to CIELCh 68, 10.051, 39.175 is called "border". The border property can be set on classes, ids or directly on the HTML element.

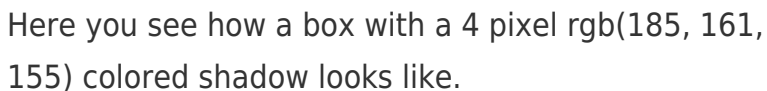
This example shows the color as border, it can be applied via the CSS property "border" or "border-color".

```
.border, #border, table{ border:4px solid rgb(185, 161, 155) }
```

If only the border color should be changed use the property `border-color`.

```
.border{ border-color:rgb(185, 161, 155) }
```

If you want to add a box shadow in that color use:



Here you see how a box with a 4 pixel `rgb(185, 161, 155)` colored shadow looks like.

```
.boxshadow{ -moz-box-shadow:4px 4px 4px 4px rgb(185, 161, 155); -webkit-box-shadow:4px 4px 4px 4px rgb(185, 161, 155); box-shadow:4px 4px 4px 4px rgb(185, 161, 155) }
```

Background

The CSS property to change the background color of an element to CIELCh 68, 10.051, 39.175 is called "background". The background property can be set on classes, ids or directly on the HTML element.

```
.background, #background, body{  
background: rgb(185, 161, 155) }
```

If only the background color should be changed can be used:

```
.background{ background-color: rgb(185,  
161, 155) }
```

This example shows the color as background, it is applied via the CSS property "background".

To optimize and compress your CSS code, you can use our [online CSS compressor and optimizer](#) based on csstidy. If you want to create a linear or radial gradient as background or border, check our [CSS Gradient Generator](#).

Hey! You found this booklet interesting? Support Converting Colors with the new Membership Option!

The pro membership hides all ads, plus gives you double the colors in the color bucket, and more awesome pro features!

[Learn more, Memberships starting at \\$2.50/m!](#)

**Follow me
on Twitter!**

@ConvertingColor