

Converting Colors

CIELCh(68, 10.772, 29.044)

Have a look what the booklet for
CIELCh(68, 10.772, 29.044) contains.

CIELCh(68, 10.772, 29.044)	3
<i>Conversions</i>	4
<i>Details</i>	6
<i>Harmonies</i>	11
<i>Previews</i>	20
<i>Color Blindness Simulation</i>	23
<i>CSS Examples</i>	26

Color

CIELCh(68, 10.772, 29.044)

Conversions

Conversions Part 1

Format	Color
Hex	BBA09D
RGB	187, 160, 157
RGB Percent	73%, 63%, 62%
CMY	0.2680, 0.3738, 0.3856
CMYK	0.00, 0.14, 0.16, 0.27
HSL	6°, 18%, 67%
HSV	6°, 16%, 73%
XYZ	38.9814, 37.9720, 37.0261
YIQ	167.7310, 17.0550, 4.7910

Conversions

Conversions Part 2

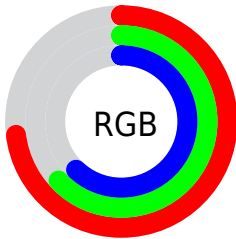
Format	Color
RYB	187, 160, 157
Decimal	12296349
CIELab	68.00, 9.42, 5.23
CIElCh	68, 10.772, 29.044
Yxy	37.9720, 0.3420, 0.3331
Android (android.graphics.Color)	4290486429 (0xFFBBA09D)
YUV	167.7310, -5.2904, 16.8989
Hunter-Lab	61.6215, 5.0805, 7.5098

Details

The CIELCh color **68, 10.772, 29.044** is a light color, and the websafe version is hex **CC9999**. A complement of this color would be **73, 9.685, 208.441**, and the grayscale version is **69, 0.009, 296.813**.

A 20% lighter version of the original color is **88, 10.493, 28.605**, and **48, 10.383, 30.251** is the 20% darker color. If you saturate the color by 10%, you get **63, 18.208, 29.579**, and if you desaturate by 10%, it is **73, 3.903, 28.629**.

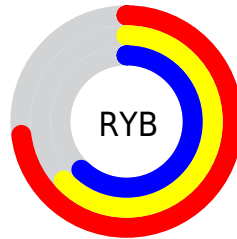
Distribution



Red (73%)

Green (63%)

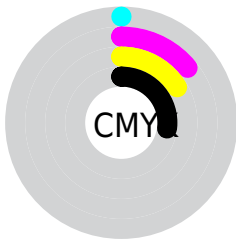
Blue (62%)



Red (73%)

Yellow (63%)

Blue (62%)

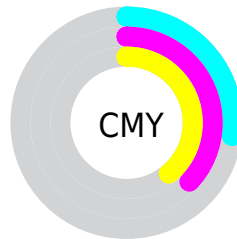


Cyan (0%)

Magenta (14%)

Yellow (16%)

Black (27%)



Cyan (27%)

Magenta (37%)

Yellow (39%)

Brightness & Saturation Gradients

These gradients show how the CIELCh color 68, 10.772, 29.044 changes by changing the brightness by 10 percent. The first figure shows a shift by +10% for each color and the second figure -10%.

Similar to the brightness gradients but the following saturation gradients show a change of the CIELCh color 68, 10.772, 29.044 by changing the saturation by 10% instead.

68, 10.772, 29.044

68, 10.772, 29.044

100, 10.772,
29.044

58, 10.772, 29.044

88, 10.772, 29.044

48, 10.772, 29.044

98, 10.772, 29.044

38, 10.772, 29.044

28, 10.772, 29.044

18, 10.772, 29.044

8, 10.772, 29.044

0, 10.772, 29.044

68, 10.772, 29.044

68, 10.772, 29.044

63, 18.208, 29.579

73, 3.903, 28.629

■ 59, 26.232, 30.308

■ 78, 2.433, 208.765

■ 55, 34.823, 31.309

■ 83, 8.287, 208.490

■ 51, 43.902, 32.648

■ 88, 13.711,
208.413

■ 47, 53.309, 34.372

■ 93, 18.754,
208.402

■ 44, 62.748, 36.457

■ 42, 71.633, 38.669

■ 96, 22.078,
198.057

■ 40, 78.737, 40.371

■ 40, 81.193, 41.170

Harmonies

Complementary

The Complementary color scheme is a pair of colors which are on the opposite of each other on the color wheel.



68, 10.772, 29.044



73, 9.685, 208.441

Rectangle

The Rectangle color scheme consists of four colors that form a rectangle on the color wheel.



68, 10.772, 29.044



68, 10.772, 79.044



68, 10.772, 209.044



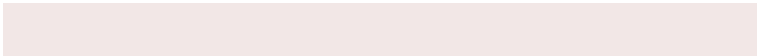
68, 10.772, 259.044

Sweetspot

The Sweet Spot groups the original color and five complimentary colors.



68, 10.771, 29.055



93, 3.961, 28.576



68, 18.606, 328.181



49, 2.732, 28.614



98, 0.011, 296.813



51, 0.007, 296.813

Same Dimension

The Same Dimension uses a secret algorithm to generate beautiful new colors.



68, 10.771, 29.055



84, 15.955, 29.207



72, 10.841, 83.360



37, 3.729, 28.774



33, 71.378, 41.154



3, 11.452, 25.595

Inverse Universe

The Inverse Universe completely reimagines the original color for something new.



73, 9.685, 208.441



91, 14.015, 208.414



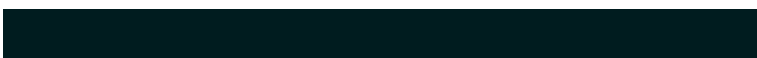
69, 10.663, 267.685



39, 3.512, 208.547



54, 31.250, 213.978



8, 10.235, 211.020

Previews

White Background



This preview shows how the CIELCh color 68, 10.772, 29.044 looks on a white background.

Color Contrast Check

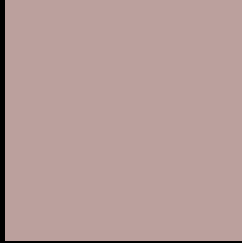
Large Text (above 18pt) WCAG AA × Fail

Any Text WCAG AA × Fail

Large Text (above 18pt) WCAG AAA × Fail

Any Text WCAG AAA × Fail

Black Background



This preview shows how the CIELCh color 68, 10.772, 29.044 looks on a black background.

Color Contrast Check

Large Text (above 18pt) WCAG AA ✓ Pass

Any Text WCAG AA ✓ Pass

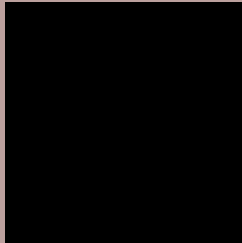
Large Text (above 18pt) WCAG AAA ✓ Pass

Any Text WCAG AAA ✓ Pass

If you want to check with other color combinations, try the [Color Contrast Checker](#).

CIELCh 68, 10.772, 29.044

Background



This preview shows how black text looks on a background with the CIELCh color 68, 10.772, 29.044.



This preview shows how white text looks on a background with the CIELCh color 68, 10.772, 29.044.

Color Blindness Simulation

Color vision deficiency is a very complex topic, and I could not describe the different causes any better than Wikipedia does, so if you want to learn more, you should check out their [article about color blindness](#).

Dichromacy



Original Color

68, 10.772, 29.044

Protanopia

68, 3.336, 74.621

Deuteranopia

68, 9.976, 29.680



Tritanopia
68, 13.244, 350.877

Trichromacy



Original Color
68, 10.772, 29.044

Protanomaly
68, 5.498, 43.219

Deuteranomaly
68, 10.374, 29.349

Tritanomaly
68, 11.697, 4.192

Monochromacy



Original Color
68, 10.772, 29.044

Achromatopsia
68, 0.008, 296.813

Achromatomaly
68, 3.876, 27.745

CSS Examples

Text

The CSS property to change the color of the text to CIELCh 68, 10.772, 29.044 is called "color". The color property can be set on classes, ids or directly on the HTML element.

This example shows how text in the color `rgb(187, 160, 157)` looks like.

```
.text, #text, p{  
    color:rgb(187, 160, 157)  
}
```

If you want to add a text shadow in that color use the text-shadow property, you can generate a text shadow directly with our [CSS Text Shadow Generator](#).

Here you see how black text with a 4 pixel rgb(187, 160, 157) colored shadow looks like.

```
.shadow{ text-shadow: 4px 4px 2px rgb(187, 160, 157) }
```

Border

The CSS property to change the border of an element to CIELCh 68, 10.772, 29.044 is called "border". The border property can be set on classes, ids or directly on the HTML element.

This example shows the color as border, it can be applied via the CSS property "border" or "border-color".

```
.border, #border, table{ border:4px solid rgb(187, 160, 157) }
```

If only the border color should be changed use the property `border-color`.

```
.border{ border-color:rgb(187, 160, 157) }
```

If you want to add a box shadow in that color use:

Here you see how a box with a 4 pixel `rgb(187, 160, 157)` colored shadow looks like.

```
.boxshadow{ -moz-box-shadow:4px 4px 4px  
4px rgb(187, 160, 157); -webkit-box-  
shadow:4px 4px 4px 4px rgb(187, 160, 157);  
box-shadow:4px 4px 4px 4px rgb(187, 160,  
157) }
```

Background

The CSS property to change the background color of an element to CIELCh 68, 10.772, 29.044 is called "background". The background property can be set on classes, ids or directly on the HTML element.

```
.background, #background, body{  
background: rgb(187, 160, 157) }
```

If only the background color should be changed can be used:

```
.background{ background-color: rgb(187,  
160, 157) }
```

This example shows the color as background, it is applied via the CSS property "background".

To optimize and compress your CSS code, you can use our [online CSS compressor and optimizer](#) based on csstidy. If you want to create a linear or radial gradient as background or border, check our [CSS Gradient Generator](#).

Hey! You found this booklet interesting? Support Converting Colors with the new Membership Option!

The pro membership hides all ads, plus gives you double the colors in the color bucket, and more awesome pro features!

[Learn more, Memberships starting at \\$2.50/m!](#)

**Follow me
on Twitter!**

@ConvertingColor