

Converting Colors

CIELCh(68, 12.044, 53.096)

Have a look what the booklet for
CIELCh(68, 12.044, 53.096) contains.

CIELCh(68, 12.028, 53.103)	3
<i>Conversions</i>	4
<i>Details</i>	6
<i>Harmonies</i>	11
<i>Previews</i>	20
<i>Color Blindness Simulation</i>	23
<i>CSS Examples</i>	26

Color

CIELCh(68, 12.028, 53.103)

Conversions

Conversions Part 1

Format	Color
Hex	BAA195
RGB	186, 161, 149
RGB Percent	73%, 63%, 58%
CMY	0.2716, 0.3696, 0.4166
CMYK	0.00, 0.13, 0.20, 0.27
HSL	19°, 21%, 66%
HSV	19°, 20%, 73%
XYZ	38.2941, 37.9720, 33.6421
YIQ	167.1070, 18.7520, 1.5680

Conversions

Conversions Part 2

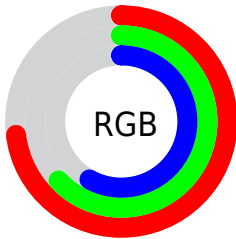
Format	Color
R_{YB}	186, 167, 149
Decimal	12231061
CIE _{Lab}	68.00, 7.22, 9.62
CIE _{LCh}	68, 12.028, 53.103
Yxy	37.9720, 0.3484, 0.3455
Android (android.graphics.Color)	4290421141 (0xFFBAA195)
YUV	167.1070, -8.9268, 16.5692
Hunter-Lab	61.6215, 3.0898, 10.7658

Details

The CIELCh color **68, 12.028, 53.103** is a light color, and the websafe version is hex **CC9999**. A complement of this color would be **70, 10.805, 236.539**, and the grayscale version is **68, 0.008, 296.813**.

A 20% lighter version of the original color is **88, 11.905, 54.394**, and **48, 11.998, 52.682** is the 20% darker color. If you saturate the color by 10%, you get **64, 18.751, 52.487**, and if you desaturate by 10%, it is **72, 5.774, 53.775**.

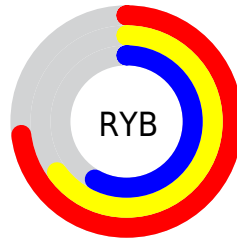
Distribution



Red (73%)

Green (63%)

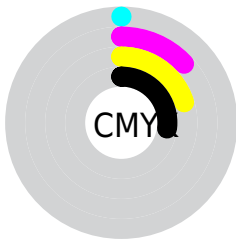
Blue (58%)



Red (73%)

Yellow (65%)

Blue (58%)

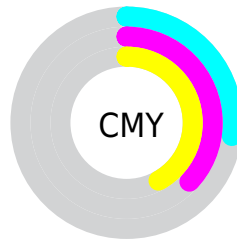


Cyan (0%)

Magenta (13%)

Yellow (20%)

Black (27%)



Cyan (27%)

Magenta (37%)

Yellow (42%)

Brightness & Saturation Gradients

These gradients show how the CIELCh color 68, 12.028, 53.103 changes by changing the brightness by 10 percent. The first figure shows a shift by +10% for each color and the second figure -10%.

Similar to the brightness gradients but the following saturation gradients show a change of the CIELCh color 68, 12.028, 53.103 by changing the saturation by 10% instead.

■ 68, 12.028, 53.103

■ 68, 12.028, 53.103

■ 100, 12.028,
53.103

■ 58, 12.028, 53.103

■ 88, 12.028, 53.103

■ 48, 12.028, 53.103

■ 98, 12.028, 53.103

■ 38, 12.028, 53.103

■ 28, 12.028, 53.103

■ 18, 12.028, 53.103

■ 8, 12.028, 53.103

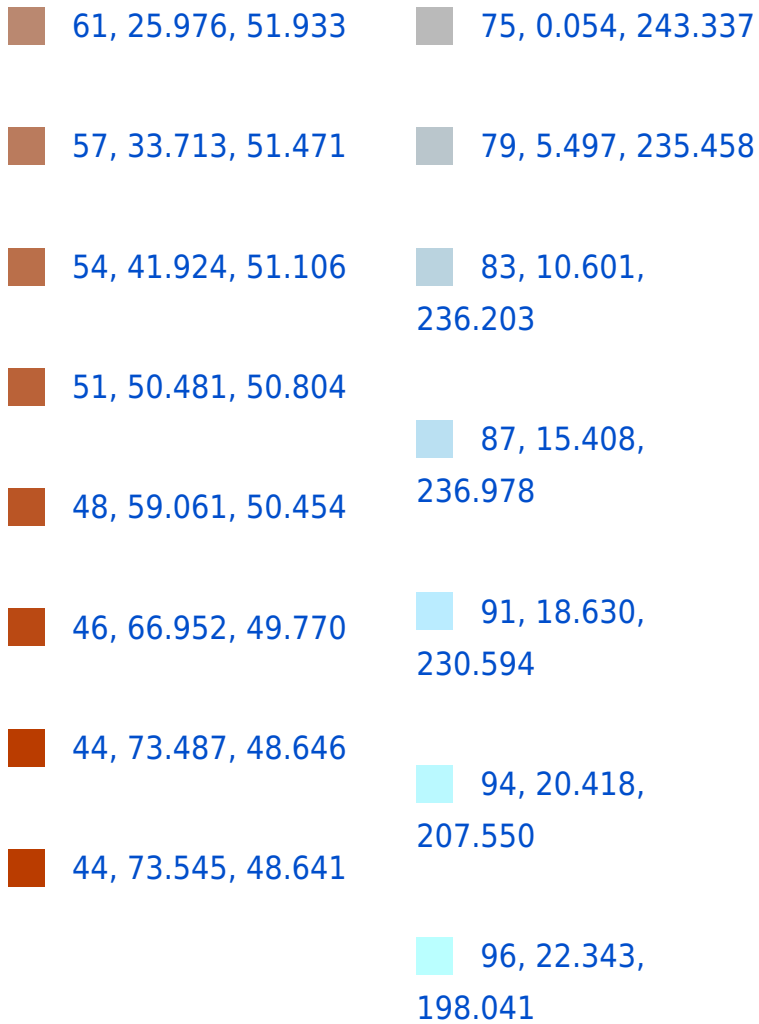
■ 0, 12.028, 53.103

■ 68, 12.028, 53.103

■ 68, 12.028, 53.103

■ 64, 18.751, 52.487

■ 72, 5.774, 53.775



Harmonies

Complementary

The Complementary color scheme is a pair of colors which are on the opposite of each other on the color wheel.



68, 12.028, 53.103



70, 10.805, 236.539

Rectangle

The Rectangle color scheme consists of four colors that form a rectangle on the color wheel.



68, 12.028, 53.103



68, 12.028, 103.103



68, 12.028, 233.103



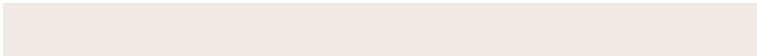
68, 12.028, 283.103

Sweetspot

The Sweet Spot groups the original color and five complimentary colors.



68, 12.028, 53.114



93, 4.276, 54.003



66, 19.767, 336.365



50, 2.866, 53.968



98, 0.011, 296.813



51, 0.007, 296.813

Same Dimension

The Same Dimension uses a secret algorithm to generate beautiful new colors.



68, 12.028, 53.114



85, 18.287, 52.826



73, 16.522, 99.141



37, 3.261, 53.812



37, 64.188, 49.125



4, 8.861, 43.866

Inverse Universe

The Inverse Universe completely reimagines the original color for something new.



70, 10.805, 236.539



87, 15.988, 237.092



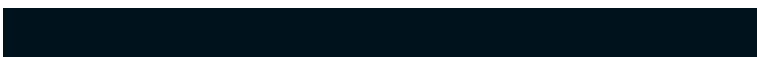
65, 16.929, 283.923



37, 3.113, 235.468



42, 35.000, 259.788



5, 8.802, 248.500

Previews

White Background



This preview shows how the CIELCh color 68, 12.028, 53.103 looks on a white background.

Color Contrast Check

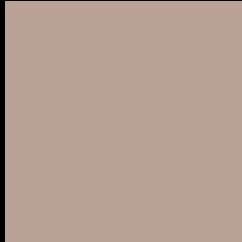
Large Text (above 18pt) WCAG AA × Fail

Any Text WCAG AA × Fail

Large Text (above 18pt) WCAG AAA × Fail

Any Text WCAG AAA × Fail

Black Background



This preview shows how the CIELCh color 68, 12.028, 53.103 looks on a black background.

Color Contrast Check

Large Text (above 18pt) WCAG AA ✓ Pass

Any Text WCAG AA ✓ Pass

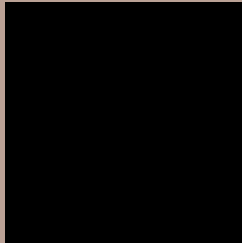
Large Text (above 18pt) WCAG AAA ✓ Pass

Any Text WCAG AAA ✓ Pass

If you want to check with other color combinations, try the [Color Contrast Checker](#).

CIELCh 68, 12.028, 53.103

Background



This preview shows how black text looks on a background with the CIELCh color 68, 12.028, 53.103.



This preview shows how white text looks on a background with the CIELCh color 68, 12.028, 53.103.

Color Blindness Simulation

Color vision deficiency is a very complex topic, and I could not describe the different causes any better than Wikipedia does, so if you want to learn more, you should check out their [article about color blindness](#).

Dichromacy



Original Color

68, 12.028, 53.103

Protanopia

68, 8.149, 89.601

Deuteranopia

68, 12.803, 48.197



Tritanopia
68, 13.244, 350.877

Trichromacy



Original Color
68, 12.028, 53.103

Protanomaly
68, 9.045, 71.545

Deuteranomaly
68, 12.441, 49.063

Tritanomaly
68, 11.027, 11.847

Monochromacy



Original Color
68, 12.028, 53.103

Achromatopsia
68, 0.008, 296.813

Achromatomaly
68, 4.417, 57.857

CSS Examples

Text

The CSS property to change the color of the text to CIELCh 68, 12.028, 53.103 is called "color". The color property can be set on classes, ids or directly on the HTML element.

This example shows how text in the color `rgb(186, 161, 149)` looks like.

```
.text, #text, p{  
    color:rgb(186, 161, 149)  
}
```

If you want to add a text shadow in that color use the text-shadow property, you can generate a text shadow directly with our [CSS Text Shadow Generator](#).

Here you see how black text with a 4 pixel rgb(186, 161, 149) colored shadow looks like.

```
.shadow{ text-shadow: 4px 4px 2px rgb(186, 161, 149) }
```

Border

The CSS property to change the border of an element to CIELCh 68, 12.028, 53.103 is called "border". The border property can be set on classes, ids or directly on the HTML element.

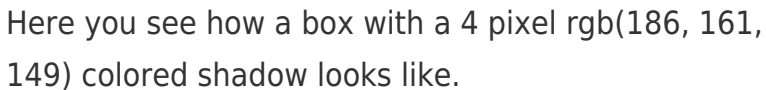
This example shows the color as border, it can be applied via the CSS property "border" or "border-color".

```
.border, #border, table{ border:4px solid rgb(186, 161, 149) }
```

If only the border color should be changed use the property `border-color`.

```
.border{ border-color:rgb(186, 161, 149) }
```

If you want to add a box shadow in that color use:



Here you see how a box with a 4 pixel `rgb(186, 161, 149)` colored shadow looks like.

```
.boxshadow{ -moz-box-shadow:4px 4px 4px  
4px rgb(186, 161, 149); -webkit-box-  
shadow:4px 4px 4px 4px rgb(186, 161, 149);  
box-shadow:4px 4px 4px 4px rgb(186, 161,  
149) }
```

Background

The CSS property to change the background color of an element to CIELCh 68, 12.028, 53.103 is called "background". The background property can be set on classes, ids or directly on the HTML element.

```
.background, #background, body{  
background: rgb(186, 161, 149) }
```

If only the background color should be changed can be used:

```
.background{ background-color: rgb(186,  
161, 149) }
```

This example shows the color as background, it is applied via the CSS property "background".

To optimize and compress your CSS code, you can use our [online CSS compressor and optimizer](#) based on csstidy. If you want to create a linear or radial gradient as background or border, check our [CSS Gradient Generator](#).

Hey! You found this booklet interesting? Support Converting Colors with the new Membership Option!

The pro membership hides all ads, plus gives you double the colors in the color bucket, and more awesome pro features!

[Learn more, Memberships starting at \\$2.50/m!](#)

**Follow me
on Twitter!**

@ConvertingColor