

Converting Colors

CIELCh(68, 12.368, 28.310)

Have a look what the booklet for
CIELCh(68, 12.368, 28.310) contains.

CIELCh(68, 12.390, 28.048)	3
<i>Conversions</i>	4
<i>Details</i>	6
<i>Harmonies</i>	11
<i>Previews</i>	20
<i>Color Blindness Simulation</i>	23
<i>CSS Examples</i>	26

Color

CIELCh(68, 12.390, 28.048)

Conversions

Conversions Part 1

Format	Color
Hex	BE9F9C
RGB	190, 159, 156
RGB Percent	75%, 62%, 61%
CMY	0.2563, 0.3778, 0.3895
CMYK	0.00, 0.16, 0.18, 0.26
HSL	5°, 21%, 68%
HSV	5°, 18%, 74%
XYZ	39.4610, 37.9720, 36.5536
YIQ	167.9270, 19.4390, 5.6390

Conversions

Conversions Part 2

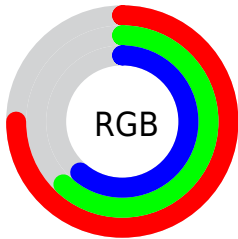
Format	Color
RYB	190, 159, 156
Decimal	12492700
CIELab	68.00, 10.93, 5.83
CIELCh	68, 12.390, 28.048
Yxy	37.9720, 0.3462, 0.3331
Android (android.graphics.Color)	4290682780 (0xFFBE9F9C)
YUV	167.9270, -5.8800, 19.3580
Hunter-Lab	61.6215, 6.4699, 7.9644

Details

The CIELCh color **68, 12.390, 28.048** is a light color, and the websafe version is hex **CC9999**. A complement of this color would be **74, 10.993, 207.157**, and the grayscale version is **69, 0.009, 296.813**.

A 20% lighter version of the original color is **88, 12.483, 29.777**, and **48, 12.138, 29.055** is the 20% darker color. If you saturate the color by 10%, you get **63, 20.107, 28.674**, and if you desaturate by 10%, it is **73, 5.256, 27.579**.

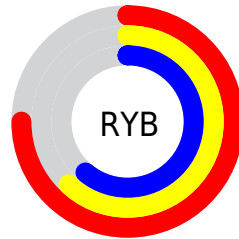
Distribution



Red (75%)

Green (62%)

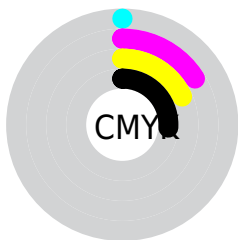
Blue (61%)



Red (75%)

Yellow (62%)

Blue (61%)

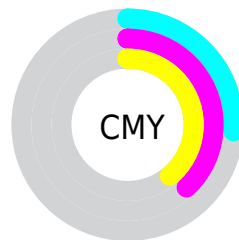


Cyan (0%)

Magenta (16%)

Yellow (18%)

Black (26%)



Cyan (26%)

Magenta (38%)

Yellow (39%)

Brightness & Saturation Gradients

These gradients show how the CIELCh color 68, 12.390, 28.048 changes by changing the brightness by 10 percent. The first figure shows a shift by +10% for each color and the second figure -10%.

Similar to the brightness gradients but the following saturation gradients show a change of the CIELCh color 68, 12.390, 28.048 by changing the saturation by 10% instead.

68, 12.390, 28.048

68, 12.390, 28.048

100, 12.390,
28.048

58, 12.390, 28.048

88, 12.390, 28.048

48, 12.390, 28.048

98, 12.390, 28.048

38, 12.390, 28.048

28, 12.390, 28.048

18, 12.390, 28.048

8, 12.390, 28.048

0, 12.390, 28.048

68, 12.390, 28.048

68, 12.390, 28.048

63, 20.107, 28.674

73, 5.256, 27.579

■ 59, 28.418, 29.517

■ 78, 1.326, 207.800

■ 54, 37.285, 30.657

■ 83, 7.404, 207.288

■ 50, 46.608, 32.165

■ 88, 13.031,
207.152

■ 47, 56.193, 34.084

■ 93, 18.259,
207.093

■ 44, 65.694, 36.365

■ 42, 74.420, 38.703

■ 96, 21.203,
198.112

■ 40, 81.121, 40.489

■ 40, 82.410, 40.975

Harmonies

Complementary

The Complementary color scheme is a pair of colors which are on the opposite of each other on the color wheel.



68, 12.390, 28.048



74, 10.993, 207.157

Rectangle

The Rectangle color scheme consists of four colors that form a rectangle on the color wheel.



68, 12.390, 28.048



68, 12.390, 78.048



68, 12.390, 208.048



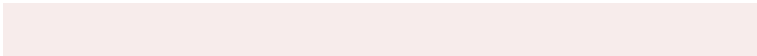
68, 12.390, 258.048

Sweetspot

The Sweet Spot groups the original color and five complimentary colors.



68, 12.389, 28.057



94, 4.070, 27.428



68, 21.281, 327.781



50, 2.807, 27.470



99, 0.012, 296.813



52, 0.007, 296.813

Same Dimension

The Same Dimension uses a secret algorithm to generate beautiful new colors.



68, 12.389, 28.057



84, 19.218, 28.308



72, 12.120, 81.571



37, 3.767, 27.646



33, 71.576, 40.942



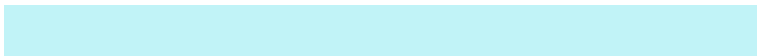
3, 11.539, 24.824

Inverse Universe

The Inverse Universe completely reimagines the original color for something new.



74, 10.993, 207.157



93, 16.505, 207.109



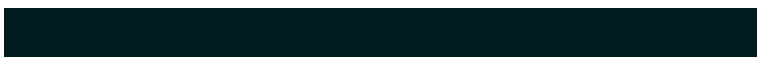
69, 11.843, 266.443



39, 3.548, 207.327



55, 31.552, 211.670



8, 10.380, 209.097

Previews

White Background



This preview shows how the CIELCh color 68, 12.390, 28.048 looks on a white background.

Color Contrast Check

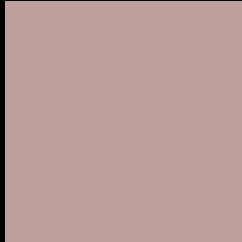
Large Text (above 18pt) WCAG AA × Fail

Any Text WCAG AA × Fail

Large Text (above 18pt) WCAG AAA × Fail

Any Text WCAG AAA × Fail

Black Background



This preview shows how the CIE LCh color 68, 12.390, 28.048 looks on a black background.

Color Contrast Check

Large Text (above 18pt) WCAG AA ✓ Pass

Any Text WCAG AA ✓ Pass

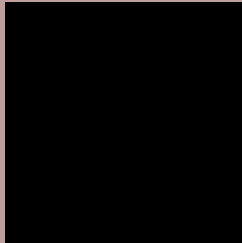
Large Text (above 18pt) WCAG AAA ✓ Pass

Any Text WCAG AAA ✓ Pass

If you want to check with other color combinations, try the [Color Contrast Checker](#).

CIELCh 68, 12.390, 28.048

Background



This preview shows how black text looks on a background with the CIELCh color 68, 12.390, 28.048.



This preview shows how white text looks on a background with the CIELCh color 68, 12.390, 28.048.

Color Blindness Simulation

Color vision deficiency is a very complex topic, and I could not describe the different causes any better than Wikipedia does, so if you want to learn more, you should check out their [article about color blindness](#).

Dichromacy



Original Color

68, 12.390, 28.048

Protanopia

68, 3.801, 79.305

Deuteranopia

68, 10.655, 35.092



Tritanopia
68, 14.626, 354.109

Trichromacy



Original Color
68, 12.390, 28.048

Protanomaly
68, 6.100, 46.431

Deuteranomaly
68, 11.047, 34.584

Tritanomaly
68, 13.236, 6.304

Monochromacy



Original Color
68, 12.390, 28.048

Achromatopsia
69, 0.009, 296.813

Achromatomaly
69, 4.257, 27.046

CSS Examples

Text

The CSS property to change the color of the text to CIELCh 68, 12.390, 28.048 is called "color". The color property can be set on classes, ids or directly on the HTML element.

This example shows how text in the color `rgb(190, 159, 156)` looks like.

```
.text, #text, p{  
    color:rgb(190, 159, 156)  
}
```

If you want to add a text shadow in that color use the text-shadow property, you can generate a text shadow directly with our [CSS Text Shadow Generator](#).

Here you see how black text with a 4 pixel rgb(190, 159, 156) colored shadow looks like.

```
.shadow{ text-shadow: 4px 4px 2px rgb(190, 159, 156) }
```

Border

The CSS property to change the border of an element to CIELCh 68, 12.390, 28.048 is called "border". The border property can be set on classes, ids or directly on the HTML element.

This example shows the color as border, it can be applied via the CSS property "border" or "border-color".

```
.border, #border, table{ border:4px solid rgb(190, 159, 156) }
```

If only the border color should be changed use the property `border-color`.

```
.border{ border-color:rgb(190, 159, 156) }
```

If you want to add a box shadow in that color use:

Here you see how a box with a 4 pixel `rgb(190, 159, 156)` colored shadow looks like.

```
.boxshadow{ -moz-box-shadow:4px 4px 4px  
4px rgb(190, 159, 156); -webkit-box-  
shadow:4px 4px 4px 4px rgb(190, 159, 156);  
box-shadow:4px 4px 4px 4px rgb(190, 159,  
156) }
```

Background

The CSS property to change the background color of an element to CIELCh 68, 12.390, 28.048 is called "background". The background property can be set on classes, ids or directly on the HTML element.

```
.background, #background, body{  
background: rgb(190, 159, 156) }
```

If only the background color should be changed can be used:

```
.background{ background-color: rgb(190,  
159, 156) }
```

This example shows the color as background, it is applied via the CSS property "background".

To optimize and compress your CSS code, you can use our [online CSS compressor and optimizer](#) based on csstidy. If you want to create a linear or radial gradient as background or border, check our [CSS Gradient Generator](#).

Hey! You found this booklet interesting? Support Converting Colors with the new Membership Option!

The pro membership hides all ads, plus gives you double the colors in the color bucket, and more awesome pro features!

[Learn more, Memberships starting at \\$2.50/m!](#)

**Follow me
on Twitter!**

@ConvertingColor