

Converting Colors

CIELCh(68, 13.484, 21.427)

Have a look what the booklet for
CIELCh(68, 13.484, 21.427) contains.

CIELCh(68, 13.458, 22.922)	3
<i>Conversions</i>	4
<i>Details</i>	6
<i>Harmonies</i>	11
<i>Previews</i>	20
<i>Color Blindness Simulation</i>	23
<i>CSS Examples</i>	26

Color

CIELCh(68, 13.458, 22.922)

Conversions

Conversions Part 1

Format	Color
Hex	C09E9D
RGB	192, 158, 157
RGB Percent	75%, 62%, 62%
CMY	0.2480, 0.3813, 0.3852
CMYK	0.00, 0.18, 0.18, 0.25
HSL	2°, 22%, 68%
HSV	2°, 18%, 75%
XYZ	39.9263, 37.9720, 37.0165
YIQ	168.0520, 20.5850, 6.8970

Conversions

Conversions Part 2

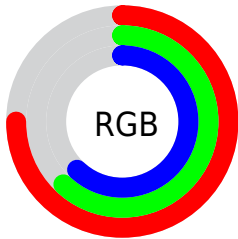
Format	Color
RYB	192, 158, 157
Decimal	12623517
CIELab	68.00, 12.40, 5.24
CIElCh	68, 13.458, 22.922
Yxy	37.9720, 0.3474, 0.3304
Android (android.graphics.Color)	4290813597 (0xFFC09E9D)
YUV	168.0520, -5.4486, 21.0024
Hunter-Lab	61.6215, 7.8178, 7.5190

Details

The CIELCh color **68, 13.458, 22.922** is a light color, and the websafe version is hex **CC9999**. A complement of this color would be **75, 11.937, 201.136**, and the grayscale version is **69, 0.009, 296.813**.

A 20% lighter version of the original color is **88, 13.401, 22.555**, and **48, 13.270, 23.500** is the 20% darker color. If you saturate the color by 10%, you get **63, 21.665, 23.830**, and if you desaturate by 10%, it is **73, 5.844, 22.208**.

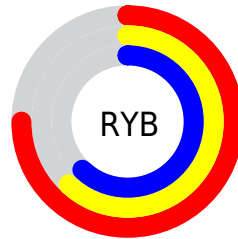
Distribution



Red (75%)

Green (62%)

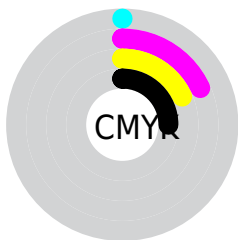
Blue (62%)



Red (75%)

Yellow (62%)

Blue (62%)

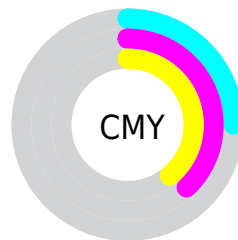


Cyan (0%)

Magenta (18%)

Yellow (18%)

Black (25%)



Cyan (25%)

Magenta (38%)

Yellow (39%)

Brightness & Saturation Gradients

These gradients show how the CIELCh color 68, 13.458, 22.922 changes by changing the brightness by 10 percent. The first figure shows a shift by +10% for each color and the second figure -10%.

Similar to the brightness gradients but the following saturation gradients show a change of the CIELCh color 68, 13.458, 22.922 by changing the saturation by 10% instead.

68, 13.458, 22.922

68, 13.458, 22.922

100, 13.458,
22.922

58, 13.458, 22.922

88, 13.458, 22.922

48, 13.458, 22.922

98, 13.458, 22.922

38, 13.458, 22.922

28, 13.458, 22.922

18, 13.458, 22.922

8, 13.458, 22.922

0, 13.458, 22.922

68, 13.458, 22.922

68, 13.458, 22.922

63, 21.665, 23.830

73, 5.844, 22.208

■ 58, 30.451, 25.006

■ 79, 1.193, 202.240

■ 54, 39.735, 26.550

■ 84, 7.698, 201.471

■ 49, 49.359, 28.555

■ 89, 13.722,
201.142

■ 46, 59.066, 31.091

■ 95, 19.320,
200.902

■ 43, 68.468, 34.112

■ 41, 76.859, 37.253

■ 96, 20.583,
198.151

■ 40, 82.985, 39.785

■ 40, 83.999, 40.288

Harmonies

Complementary

The Complementary color scheme is a pair of colors which are on the opposite of each other on the color wheel.



68, 13.458, 22.922



75, 11.937, 201.136

Rectangle

The Rectangle color scheme consists of four colors that form a rectangle on the color wheel.



68, 13.458, 22.922



68, 13.458, 72.922



68, 13.458, 202.922



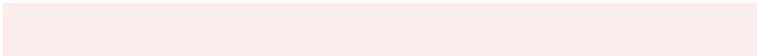
68, 13.458, 252.922

Sweetspot

The Sweet Spot groups the original color and five complimentary colors.



68, 13.456, 22.930



95, 4.339, 21.972



69, 22.883, 325.876



50, 2.968, 22.029



99, 0.012, 296.813



52, 0.007, 296.813

Same Dimension

The Same Dimension uses a secret algorithm to generate beautiful new colors.



68, 13.456, 22.930



84, 20.448, 23.272



72, 11.876, 74.918



38, 4.071, 22.286



33, 73.334, 40.115



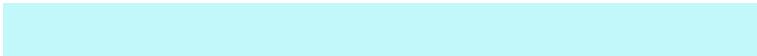
3, 13.736, 21.003

Inverse Universe

The Inverse Universe completely reimagines the original color for something new.



75, 11.937, 201.136



94, 17.611, 200.979



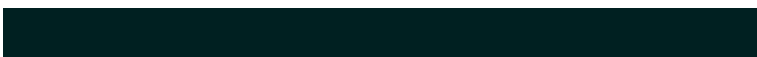
70, 11.385, 259.801



40, 3.836, 201.532



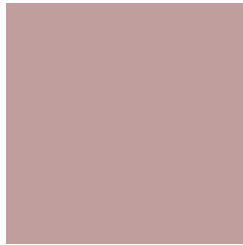
58, 34.106, 200.938



10, 12.046, 199.877

Previews

White Background



This preview shows how the CIELCh color 68, 13.458, 22.922 looks on a white background.

Color Contrast Check

Large Text (above 18pt) WCAG AA × Fail

Any Text WCAG AA × Fail

Large Text (above 18pt) WCAG AAA × Fail

Any Text WCAG AAA × Fail

Black Background



This preview shows how the CIELCh color 68, 13.458, 22.922 looks on a black background.

Color Contrast Check

Large Text (above 18pt) WCAG AA ✓ Pass

Any Text WCAG AA ✓ Pass

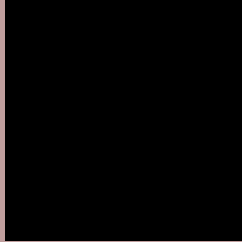
Large Text (above 18pt) WCAG AAA ✓ Pass

Any Text WCAG AAA ✓ Pass

If you want to check with other color combinations, try the [Color Contrast Checker](#).

CIELCh 68, 13.458, 22.922

Background



This preview shows how black text looks on a background with the CIELCh color 68, 13.458, 22.922.



This preview shows how white text looks on a background with the CIELCh color 68, 13.458, 22.922.

Color Blindness Simulation

Color vision deficiency is a very complex topic, and I could not describe the different causes any better than Wikipedia does, so if you want to learn more, you should check out their [article about color blindness](#).

Dichromacy



Original Color


68, 13.458, 22.922

Protanopia

68, 2.902, 68.462

Deuteranopia

68, 10.500, 32.260



Tritanopia
68, 15.696, 356.190

Trichromacy



Original Color
68, 13.458, 22.922

Protanomaly
68, 6.437, 34.651

Deuteranomaly
68, 11.586, 28.508

Tritanomaly
68, 14.513, 5.506

Monochromacy



Original Color
68, 13.458, 22.922

Achromatopsia
69, 0.009, 296.813

Achromatomaly
68, 4.999, 19.756

CSS Examples

Text

The CSS property to change the color of the text to CIELCh 68, 13.458, 22.922 is called "color". The color property can be set on classes, ids or directly on the HTML element.

This example shows how text in the color `rgb(192, 158, 157)` looks like.

```
.text, #text, p{  
    color:rgb(192, 158, 157)  
}
```

If you want to add a text shadow in that color use the text-shadow property, you can generate a text shadow directly with our [CSS Text Shadow Generator](#).

Here you see how black text with a 4 pixel rgb(192, 158, 157) colored shadow looks like.

```
.shadow{ text-shadow: 4px 4px 2px rgb(192, 158, 157) }
```

Border

The CSS property to change the border of an element to CIELCh 68, 13.458, 22.922 is called "border". The border property can be set on classes, ids or directly on the HTML element.

This example shows the color as border, it can be applied via the CSS property "border" or "border-color".

```
.border, #border, table{ border:4px solid rgb(192, 158, 157) }
```

If only the border color should be changed use the property `border-color`.

```
.border{ border-color:rgb(192, 158, 157) }
```

If you want to add a box shadow in that color use:

Here you see how a box with a 4 pixel `rgb(192, 158, 157)` colored shadow looks like.

```
.boxshadow{ -moz-box-shadow:4px 4px 4px 4px rgb(192, 158, 157); -webkit-box-shadow:4px 4px 4px 4px rgb(192, 158, 157); box-shadow:4px 4px 4px 4px rgb(192, 158, 157) }
```

Background

The CSS property to change the background color of an element to CIELCh 68, 13.458, 22.922 is called "background". The background property can be set on classes, ids or directly on the HTML element.

```
.background, #background, body{  
background: rgb(192, 158, 157) }
```

If only the background color should be changed can be used:

```
.background{ background-color: rgb(192,  
158, 157) }
```

This example shows the color as background, it is applied via the CSS property "background".

To optimize and compress your CSS code, you can use our [online CSS compressor and optimizer](#) based on csstidy. If you want to create a linear or radial gradient as background or border, check our [CSS Gradient Generator](#).

Hey! You found this booklet interesting? Support Converting Colors with the new Membership Option!

The pro membership hides all ads, plus gives you double the colors in the color bucket, and more awesome pro features!

[Learn more, Memberships starting at \\$2.50/m!](#)

**Follow me
on Twitter!**

@ConvertingColor