

Converting Colors

CIELCh(68, 13.527, 25.215)

Have a look what the booklet for
CIELCh(68, 13.527, 25.215) contains.

CIELCh(68, 13.527, 25.215)	3
<i>Conversions</i>	4
<i>Details</i>	6
<i>Harmonies</i>	11
<i>Previews</i>	20
<i>Color Blindness Simulation</i>	23
<i>CSS Examples</i>	26

Color

CIELCh(68, 13.527, 25.215)

Conversions

Conversions Part 1

Format	Color
Hex	C09E9C
RGB	192, 158, 156
RGB Percent	75%, 62%, 61%
CMY	0.2478, 0.3811, 0.3889
CMYK	0.00, 0.18, 0.19, 0.25
HSL	3°, 22%, 68%
HSV	3°, 19%, 75%
XYZ	39.8761, 37.9720, 36.6035
YIQ	167.9380, 20.9060, 6.5860

Conversions

Conversions Part 2

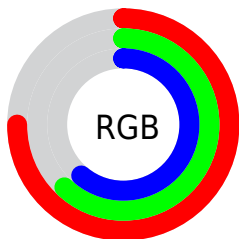
Format	Color
RYB	192, 158, 156
Decimal	12623516
CIELab	68.00, 12.24, 5.76
CIELCh	68, 13.527, 25.215
Yxy	37.9720, 0.3484, 0.3318
Android (android.graphics.Color)	4290813596 (0xFFC09E9C)
YUV	167.9380, -5.8854, 21.1024
Hunter-Lab	61.6215, 7.6722, 7.9164

Details

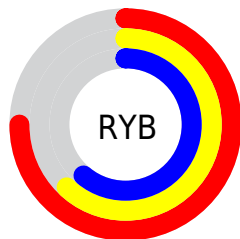
The CIELCh color **68, 13.527, 25.215** is a light color, and the websafe version is hex **CC9999**. A complement of this color would be **75, 11.939, 203.757**, and the grayscale version is **69, 0.009, 296.813**.

A 20% lighter version of the original color is **88, 13.532, 26.916**, and **48, 13.359, 25.970** is the 20% darker color. If you saturate the color by 10%, you get **63, 21.580, 26.014**, and if you desaturate by 10%, it is **73, 6.067, 24.602**.

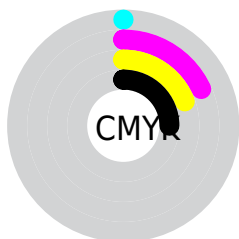
Distribution



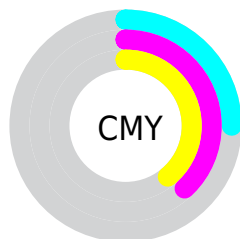
- Red (75%)
- Green (62%)
- Blue (61%)



- Red (75%)
- Yellow (62%)
- Blue (61%)



- Cyan (0%)
- Magenta (18%)
- Yellow (19%)
- Black (25%)



- Cyan (25%)
- Magenta (38%)
- Yellow (39%)

Brightness & Saturation Gradients

These gradients show how the CIELCh color 68, 13.527, 25.215 changes by changing the brightness by 10 percent. The first figure shows a shift by +10% for each color and the second figure -10%.

Similar to the brightness gradients but the following saturation gradients show a change of the CIELCh color 68, 13.527, 25.215 by changing the saturation by 10% instead.

68, 13.527, 25.215

68, 13.527, 25.215

100, 13.527,
25.215

58, 13.527, 25.215

88, 13.527, 25.215

48, 13.527, 25.215

98, 13.527, 25.215

38, 13.527, 25.215

28, 13.527, 25.215

18, 13.527, 25.215

8, 13.527, 25.215

0, 13.527, 25.215

68, 13.527, 25.215

68, 13.527, 25.215

63, 21.580, 26.014

73, 6.067, 24.602

■ 58, 30.223, 27.063

■ 78, 0.822, 204.926

■ 54, 39.391, 28.453

■ 84, 7.185, 204.040

■ 50, 48.948, 30.266

■ 89, 13.075,
203.787

■ 46, 58.657, 32.555

■ 94, 18.546,
203.621

■ 44, 68.135, 35.262

■ 42, 76.634, 38.021

■ 96, 20.562,
198.152

■ 40, 82.929, 40.216

■ 40, 83.656, 40.559

Harmonies

Complementary

The Complementary color scheme is a pair of colors which are on the opposite of each other on the color wheel.



68, 13.527, 25.215



75, 11.939, 203.757

Rectangle

The Rectangle color scheme consists of four colors that form a rectangle on the color wheel.



68, 13.527, 25.215



68, 13.527, 75.215



68, 13.527, 205.215



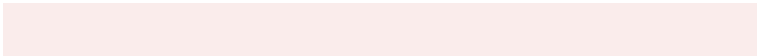
68, 13.527, 255.215

Sweetspot

The Sweet Spot groups the original color and five complimentary colors.



68, 13.526, 25.224



94, 5.094, 24.436



68, 23.014, 326.844



50, 3.387, 24.479



99, 0.012, 296.813



52, 0.007, 296.813

Same Dimension

The Same Dimension uses a secret algorithm to generate beautiful new colors.



68, 13.526, 25.224



84, 20.937, 25.561



73, 12.507, 78.238



38, 3.967, 24.638



33, 72.970, 40.483



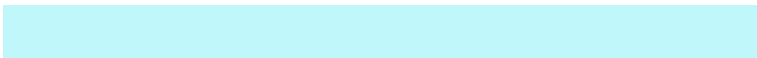
3, 13.498, 22.563

Inverse Universe

The Inverse Universe completely reimagines the original color for something new.



75, 11.939, 203.757



94, 17.866, 203.640



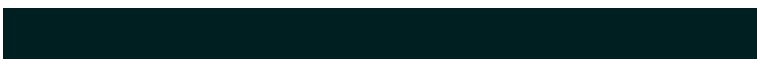
70, 12.092, 263.342



40, 3.737, 204.072



57, 32.996, 205.594



10, 11.689, 203.433

Previews

White Background



This preview shows how the CIELCh color 68, 13.527, 25.215 looks on a white background.

Color Contrast Check

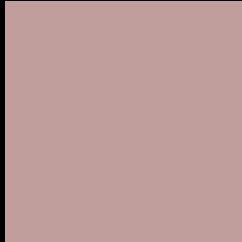
Large Text (above 18pt) WCAG AA × Fail

Any Text WCAG AA × Fail

Large Text (above 18pt) WCAG AAA × Fail

Any Text WCAG AAA × Fail

Black Background



This preview shows how the CIELCh color 68, 13.527, 25.215 looks on a black background.

Color Contrast Check

Large Text (above 18pt) WCAG AA ✓ Pass

Any Text WCAG AA ✓ Pass

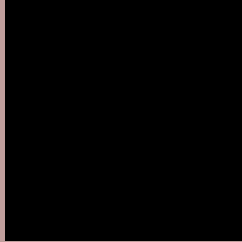
Large Text (above 18pt) WCAG AAA ✓ Pass

Any Text WCAG AAA ✓ Pass

If you want to check with other color combinations, try the [Color Contrast Checker](#).

CIELCh 68, 13.527, 25.215

Background



This preview shows how black text looks on a background with the CIELCh color 68, 13.527, 25.215.



This preview shows how white text looks on a background with the CIELCh color 68, 13.527, 25.215.

Color Blindness Simulation

Color vision deficiency is a very complex topic, and I could not describe the different causes any better than Wikipedia does, so if you want to learn more, you should check out their [article about color blindness](#).

Dichromacy



Original Color


68, 13.527, 25.215

Protanopia

68, 3.336, 74.621

Deuteranopia

68, 10.655, 35.092



Tritanopia
68, 15.696, 356.190

Trichromacy



Original Color
68, 13.527, 25.215

Protanomaly
68, 6.612, 39.203

Deuteranomaly
68, 11.707, 31.123

Tritanomaly
68, 14.513, 5.506

Monochromacy



Original Color
68, 13.527, 25.215

Achromatopsia
69, 0.009, 296.813

Achromatomaly
68, 4.999, 19.756

CSS Examples

Text

The CSS property to change the color of the text to CIELCh 68, 13.527, 25.215 is called "color". The color property can be set on classes, ids or directly on the HTML element.

This example shows how text in the color `rgb(192, 158, 156)` looks like.

```
.text, #text, p{  
    color:rgb(192, 158, 156)  
}
```

If you want to add a text shadow in that color use the text-shadow property, you can generate a text shadow directly with our [CSS Text Shadow Generator](#).

Here you see how black text with a 4 pixel rgb(192, 158, 156) colored shadow looks like.

```
.shadow{ text-shadow: 4px 4px 2px rgb(192, 158, 156) }
```

Border

The CSS property to change the border of an element to CIELCh 68, 13.527, 25.215 is called "border". The border property can be set on classes, ids or directly on the HTML element.

This example shows the color as border, it can be applied via the CSS property "border" or "border-color".

```
.border, #border, table{ border:4px solid rgb(192, 158, 156) }
```

If only the border color should be changed use the property `border-color`.

```
.border{ border-color:rgb(192, 158, 156) }
```

If you want to add a box shadow in that color use:

Here you see how a box with a 4 pixel `rgb(192, 158, 156)` colored shadow looks like.

```
.boxshadow{ -moz-box-shadow:4px 4px 4px  
4px rgb(192, 158, 156); -webkit-box-  
shadow:4px 4px 4px 4px rgb(192, 158, 156);  
box-shadow:4px 4px 4px 4px rgb(192, 158,  
156) }
```

Background

The CSS property to change the background color of an element to CIELCh 68, 13.527, 25.215 is called "background". The background property can be set on classes, ids or directly on the HTML element.

```
.background, #background, body{  
background: rgb(192, 158, 156) }
```

If only the background color should be changed can be used:

```
.background{ background-color: rgb(192,  
158, 156) }
```

This example shows the color as background, it is applied via the CSS property "background".

To optimize and compress your CSS code, you can use our [online CSS compressor and optimizer](#) based on csstidy. If you want to create a linear or radial gradient as background or border, check our [CSS Gradient Generator](#).

Hey! You found this booklet interesting? Support Converting Colors with the new Membership Option!

The pro membership hides all ads, plus gives you double the colors in the color bucket, and more awesome pro features!

[Learn more, Memberships starting at \\$2.50/m!](#)

**Follow me
on Twitter!**

@ConvertingColor