

Converting Colors

CIELCh(68, 15.802, 72.361)

Have a look what the booklet for
CIELCh(68, 15.802, 72.361) contains.

CIELCh(68, 15.802, 72.361)	3
<i>Conversions</i>	4
<i>Details</i>	6
<i>Harmonies</i>	11
<i>Previews</i>	20
<i>Color Blindness Simulation</i>	23
<i>CSS Examples</i>	26

Color

CIELCh(68, 15.802, 72.361)

Conversions

Conversions Part 1

Format	Color
Hex	B9A28B
RGB	185, 162, 139
RGB Percent	73%, 64%, 55%
CMY	0.2749, 0.3650, 0.4552
CMYK	0.00, 0.12, 0.25, 0.27
HSL	30°, 25%, 63%
HSV	30°, 25%, 73%
XYZ	37.5422, 37.9720, 29.7425
YIQ	166.2550, 21.0910, -2.2770

Conversions

Conversions Part 2

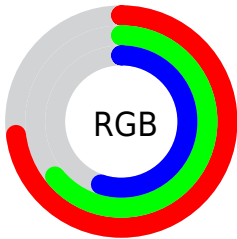
Format	Color
R _Y B	185, 185, 139
Decimal	12165771
CIE Lab	68.00, 4.79, 15.06
CIE LCh	68, 15.802, 72.361
Yxy	37.9720, 0.3567, 0.3608
Android (android.graphics.Color)	4290355851 (0xFFB9A28B)
YUV	166.2550, -13.4367, 16.4394
Hunter-Lab	61.6215, 0.9116, 14.5178

Details

The CIELCh color $68, 15.802, 72.361$ is a light color, and the websafe version is hex `CC9999`. A complement of this color would be $66, 14.785, 259.121$, and the grayscale version is $68, 0.008, 296.813$.

A 20% lighter version of the original color is $88, 15.758, 71.801$, and $48, 15.601, 71.580$ is the 20% darker color. If you saturate the color by 10%, you get $65, 22.684, 71.127$, and if you desaturate by 10%, it is $71, 9.230, 73.591$.

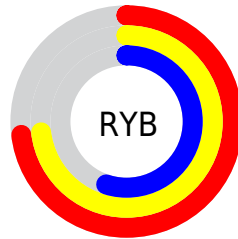
Distribution



Red (73%)

Green (64%)

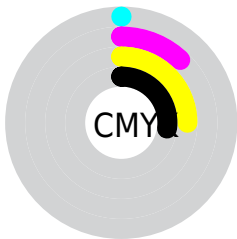
Blue (55%)



Red (73%)

Yellow (73%)

Blue (55%)

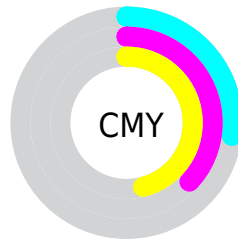


Cyan (0%)

Magenta (12%)

Yellow (25%)

Black (27%)



Cyan (27%)

Magenta (37%)

Yellow (46%)

Brightness & Saturation Gradients

These gradients show how the CIELCh color 68, 15.802, 72.361 changes by changing the brightness by 10 percent. The first figure shows a shift by +10% for each color and the second figure -10%.

Similar to the brightness gradients but the following saturation gradients show a change of the CIELCh color 68, 15.802, 72.361 by changing the saturation by 10% instead.

■ 68, 15.802, 72.361

■ 68, 15.802, 72.361

■ 100, 15.802,
72.361

■ 58, 15.802, 72.361

■ 88, 15.802, 72.361

■ 48, 15.802, 72.361

■ 98, 15.802, 72.361

■ 38, 15.802, 72.361

■ 28, 15.802, 72.361

■ 18, 15.802, 72.361

■ 8, 15.802, 72.361

■ 0, 15.802, 72.361

■ 68, 15.802, 72.361

■ 68, 15.802, 72.361

■ 65, 22.684, 71.127

■ 71, 9.230, 73.591

63, 29.872, 69.871

74, 2.953, 74.729

60, 37.323, 68.597

77, 3.054, 256.152

57, 44.918, 67.279

80, 8.816, 257.236

55, 52.393, 65.842

83, 14.361,
258.342

53, 59.223, 64.126

86, 19.712,
259.415

51, 64.558, 61.830

50, 66.953, 60.598

88, 19.586,
248.288

91, 18.837,
230.544

93, 19.863,
213.258

Harmonies

Complementary

The Complementary color scheme is a pair of colors which are on the opposite of each other on the color wheel.



68, 15.802, 72.361



66, 14.785, 259.121

Rectangle

The Rectangle color scheme consists of four colors that form a rectangle on the color wheel.



68, 15.802, 72.361



68, 15.802, 122.361



68, 15.802, 252.361



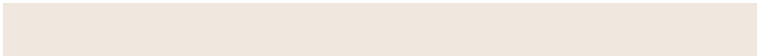
68, 15.802, 302.361

Sweetspot

The Sweet Spot groups the original color and five complimentary colors.



68, 15.802, 72.370



92, 5.267, 74.496



63, 21.822, 345.866



49, 3.425, 74.430



97, 0.011, 296.813



50, 0.007, 296.813

Same Dimension

The Same Dimension uses a secret algorithm to generate beautiful new colors.



68, 15.802, 72.370



84, 23.848, 71.673



74, 24.600, 107.795



37, 3.451, 74.246



42, 58.769, 61.141



5, 8.771, 61.209

Inverse Universe

The Inverse Universe completely reimagines the original color for something new.



66, 14.785, 259.121



81, 21.937, 260.185



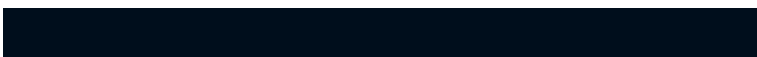
59, 26.073, 293.074



37, 3.378, 256.690



34, 49.283, 283.429



4, 10.214, 267.364

Previews

White Background



This preview shows how the CIELCh color 68, 15.802, 72.361 looks on a white background.

Color Contrast Check

Large Text (above 18pt) WCAG AA × Fail

Any Text WCAG AA × Fail

Large Text (above 18pt) WCAG AAA × Fail

Any Text WCAG AAA × Fail

Black Background



This preview shows how the CIELCh color 68, 15.802, 72.361 looks on a black background.

Color Contrast Check

Large Text (above 18pt) WCAG AA ✓ Pass

Any Text WCAG AA ✓ Pass

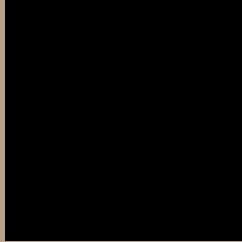
Large Text (above 18pt) WCAG AAA ✓ Pass

Any Text WCAG AAA ✓ Pass

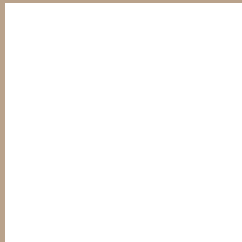
If you want to check with other color combinations, try the [Color Contrast Checker](#).

CIELCh 68, 15.802, 72.361

Background



This preview shows how black text looks on a background with the CIELCh color 68, 15.802, 72.361.



This preview shows how white text looks on a background with the CIELCh color 68, 15.802, 72.361.

Color Blindness Simulation

Color vision deficiency is a very complex topic, and I could not describe the different causes any better than Wikipedia does, so if you want to learn more, you should check out their [article about color blindness](#).

Dichromacy



Original Color

68, 15.802, 72.361

Protanopia

68, 13.757, 91.754

Deuteranopia

68, 17.290, 61.592



Tritanopia
68, 13.581, 351.739

Trichromacy



Original Color
68, 15.802, 72.361

Protanomaly
68, 14.516, 84.015

Deuteranomaly
68, 16.758, 65.696

Tritanomaly
68, 11.382, 20.409

Monochromacy



Original Color
68, 15.802, 72.361

Achromatopsia
68, 0.008, 296.813

Achromatomaly
68, 5.825, 77.279

CSS Examples

Text

The CSS property to change the color of the text to CIELCh 68, 15.802, 72.361 is called "color". The color property can be set on classes, ids or directly on the HTML element.

This example shows how text in the color `rgb(185, 162, 139)` looks like.

```
.text, #text, p{  
    color:rgb(185, 162, 139)  
}
```

If you want to add a text shadow in that color use the text-shadow property, you can generate a text shadow directly with our [CSS Text Shadow Generator](#).

Here you see how black text with a 4 pixel rgb(185, 162, 139) colored shadow looks like.

```
.shadow{ text-shadow: 4px 4px 2px rgb(185, 162, 139) }
```

Border

The CSS property to change the border of an element to CIELCh 68, 15.802, 72.361 is called "border". The border property can be set on classes, ids or directly on the HTML element.

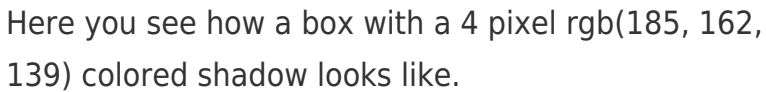
This example shows the color as border, it can be applied via the CSS property "border" or "border-color".

```
.border, #border, table{ border:4px solid rgb(185, 162, 139) }
```

If only the border color should be changed use the property `border-color`.

```
.border{ border-color:rgb(185, 162, 139) }
```

If you want to add a box shadow in that color use:



Here you see how a box with a 4 pixel `rgb(185, 162, 139)` colored shadow looks like.

```
.boxshadow{ -moz-box-shadow:4px 4px 4px 4px rgb(185, 162, 139); -webkit-box-shadow:4px 4px 4px 4px rgb(185, 162, 139); box-shadow:4px 4px 4px 4px rgb(185, 162, 139) }
```

Background

The CSS property to change the background color of an element to CIELCh 68, 15.802, 72.361 is called "background". The background property can be set on classes, ids or directly on the HTML element.

```
.background, #background, body{  
background: rgb(185, 162, 139) }
```

If only the background color should be changed can be used:

```
.background{ background-color: rgb(185,  
162, 139) }
```

This example shows the color as background, it is applied via the CSS property "background".

To optimize and compress your CSS code, you can use our [online CSS compressor and optimizer](#) based on csstidy. If you want to create a linear or radial gradient as background or border, check our [CSS Gradient Generator](#).

Hey! You found this booklet interesting? Support Converting Colors with the new Membership Option!

The pro membership hides all ads, plus gives you double the colors in the color bucket, and more awesome pro features!

[Learn more, Memberships starting at \\$2.50/m!](#)

**Follow me
on Twitter!**

@ConvertingColor