

Converting Colors

CIELCh(68, 16.153, 57.613)

Have a look what the booklet for
CIELCh(68, 16.153, 57.613) contains.

CIELCh(68, 16.153, 57.613)	3
<i>Conversions</i>	4
<i>Details</i>	6
<i>Harmonies</i>	11
<i>Previews</i>	20
<i>Color Blindness Simulation</i>	23
<i>CSS Examples</i>	26

Color

CIELCh(68, 16.153, 57.613)

Conversions

Conversions Part 1

Format	Color
Hex	BFA08E
RGB	191, 160, 142
RGB Percent	75%, 63%, 56%
CMY	0.2526, 0.3741, 0.4446
CMYK	0.00, 0.16, 0.26, 0.25
HSL	22°, 28%, 65%
HSV	22°, 26%, 75%
XYZ	38.7409, 37.9720, 30.7287
YIQ	167.2170, 24.2540, 0.9740

Conversions

Conversions Part 2

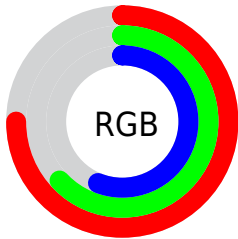
Format	Color
R_{YB}	191, 170, 142
Decimal	12558478
CIE _{Lab}	68.00, 8.65, 13.64
CIE _{LCh}	68, 16.153, 57.613
Y _{xy}	37.9720, 0.3606, 0.3534
Android (android.graphics.Color)	4290748558 (0xFFBFA08E)
YUV	167.2170, -12.4320, 20.8577
Hunter-Lab	61.6215, 4.3841, 13.5689

Details

The CIELCh color **68, 16.153, 57.613** is a light color, and the websafe version is hex **CC9999**. A complement of this color would be **69, 14.232, 243.031**, and the grayscale version is **68, 0.008, 296.813**.

A 20% lighter version of the original color is **88, 16.077, 57.750**, and **48, 16.120, 58.253** is the 20% darker color. If you saturate the color by 10%, you get **65, 23.233, 56.818**, and if you desaturate by 10%, it is **72, 9.535, 58.464**.

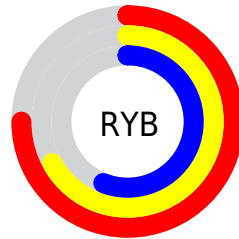
Distribution



Red (75%)

Green (63%)

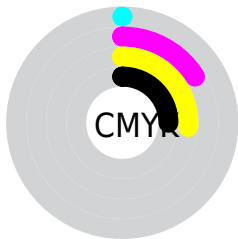
Blue (56%)



Red (75%)

Yellow (67%)

Blue (56%)

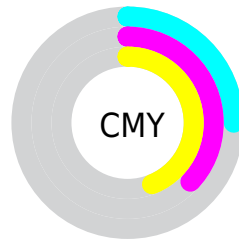


Cyan (0%)

Magenta (16%)

Yellow (26%)

Black (25%)



Cyan (25%)

Magenta (37%)

Yellow (44%)

Brightness & Saturation Gradients

These gradients show how the CIELCh color 68, 16.153, 57.613 changes by changing the brightness by 10 percent. The first figure shows a shift by +10% for each color and the second figure -10%.

Similar to the brightness gradients but the following saturation gradients show a change of the CIELCh color 68, 16.153, 57.613 by changing the saturation by 10% instead.

■ 68, 16.153, 57.613

■ 68, 16.153, 57.613

■ 100, 16.153,
57.613

■ 58, 16.153, 57.613

■ 88, 16.153, 57.613

■ 48, 16.153, 57.613

■ 98, 16.153, 57.613

■ 38, 16.153, 57.613

■ 28, 16.153, 57.613

■ 18, 16.153, 57.613

■ 8, 16.153, 57.613

■ 0, 16.153, 57.613

■ 68, 16.153, 57.613

■ 68, 16.153, 57.613

■ 65, 23.233, 56.818

■ 72, 9.535, 58.464

61, 30.793, 56.072

75, 3.345, 59.271

58, 38.817, 55.388

79, 2.459, 240.501

55, 47.214, 54.747

82, 7.919, 241.294

52, 55.745, 54.071

86, 13.075,
242.185

49, 63.871, 53.163

90, 17.651,
241.761

47, 70.588, 51.623

93, 18.054,
216.824

46, 73.255, 50.997

96, 20.925,
198.129

Harmonies

Complementary

The Complementary color scheme is a pair of colors which are on the opposite of each other on the color wheel.



68, 16.153, 57.613



69, 14.232, 243.031

Rectangle

The Rectangle color scheme consists of four colors that form a rectangle on the color wheel.



68, 16.153, 57.613



68, 16.153, 107.613



68, 16.153, 237.613



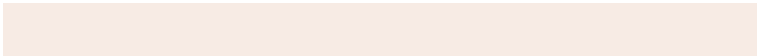
68, 16.153, 287.613

Sweetspot

The Sweet Spot groups the original color and five complimentary colors.



68, 16.153, 57.622



94, 5.855, 59.092



64, 25.213, 339.080



50, 4.216, 58.970



99, 0.012, 296.813



52, 0.007, 296.813

Same Dimension

The Same Dimension uses a secret algorithm to generate beautiful new colors.



68, 16.153, 57.622



84, 24.571, 57.150



74, 22.889, 101.342



38, 3.343, 58.995



38, 63.481, 51.533



5, 10.139, 46.067

Inverse Universe

The Inverse Universe completely reimagines the original color for something new.



69, 14.232, 243.031



85, 20.951, 243.977



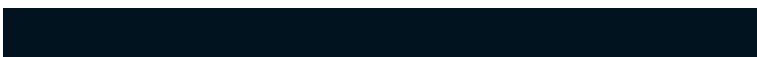
62, 23.859, 287.442



38, 3.208, 240.942



41, 38.321, 266.932



5, 10.161, 254.755

Previews

White Background



This preview shows how the CIELCh color 68, 16.153, 57.613 looks on a white background.

Color Contrast Check

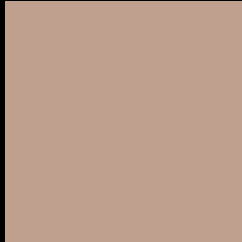
Large Text (above 18pt) WCAG AA × Fail

Any Text WCAG AA × Fail

Large Text (above 18pt) WCAG AAA × Fail

Any Text WCAG AAA × Fail

Black Background



This preview shows how the CIELCh color 68, 16.153, 57.613 looks on a black background.

Color Contrast Check

Large Text (above 18pt) WCAG AA ✓ Pass

Any Text WCAG AA ✓ Pass

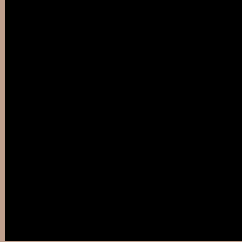
Large Text (above 18pt) WCAG AAA ✓ Pass

Any Text WCAG AAA ✓ Pass

If you want to check with other color combinations, try the [Color Contrast Checker](#).

CIELCh 68, 16.153, 57.613

Background



This preview shows how black text looks on a background with the CIELCh color 68, 16.153, 57.613.



This preview shows how white text looks on a background with the CIELCh color 68, 16.153, 57.613.

Color Blindness Simulation

Color vision deficiency is a very complex topic, and I could not describe the different causes any better than Wikipedia does, so if you want to learn more, you should check out their [article about color blindness](#).

Dichromacy



Original Color

68, 16.153, 57.613

Protanopia

68, 11.536, 90.863

Deuteranopia

68, 16.153, 57.613



Tritanopia
68, 16.052, 356.825

Trichromacy



Original Color
68, 16.153, 57.613

Protanomaly
68, 12.497, 75.854

Deuteranomaly
68, 16.153, 57.613

Tritanomaly
68, 14.214, 18.506

Monochromacy



Original Color
68, 16.153, 57.613

Achromatopsia
68, 0.008, 296.813

Achromatomaly
68, 5.704, 54.828

CSS Examples

Text

The CSS property to change the color of the text to CIELCh 68, 16.153, 57.613 is called "color". The color property can be set on classes, ids or directly on the HTML element.

This example shows how text in the color `rgb(191, 160, 142)` looks like.

```
.text, #text, p{  
    color:rgb(191, 160, 142)  
}
```

If you want to add a text shadow in that color use the text-shadow property, you can generate a text shadow directly with our [CSS Text Shadow Generator](#).

Here you see how black text with a 4 pixel rgb(191, 160, 142) colored shadow looks like.

```
.shadow{ text-shadow: 4px 4px 2px rgb(191, 160, 142) }
```

Border

The CSS property to change the border of an element to CIELCh 68, 16.153, 57.613 is called "border". The border property can be set on classes, ids or directly on the HTML element.

This example shows the color as border, it can be applied via the CSS property "border" or "border-color".

```
.border, #border, table{ border:4px solid rgb(191, 160, 142) }
```

If only the border color should be changed use the property `border-color`.

```
.border{ border-color:rgb(191, 160, 142) }
```

If you want to add a box shadow in that color use:

Here you see how a box with a 4 pixel `rgb(191, 160, 142)` colored shadow looks like.

```
.boxshadow{ -moz-box-shadow:4px 4px 4px  
4px rgb(191, 160, 142); -webkit-box-  
shadow:4px 4px 4px 4px rgb(191, 160, 142);  
box-shadow:4px 4px 4px 4px rgb(191, 160,  
142) }
```

Background

The CSS property to change the background color of an element to CIELCh 68, 16.153, 57.613 is called "background". The background property can be set on classes, ids or directly on the HTML element.

```
.background, #background, body{  
background: rgb(191, 160, 142) }
```

If only the background color should be changed can be used:

```
.background{ background-color: rgb(191,  
160, 142) }
```

This example shows the color as background, it is applied via the CSS property "background".

To optimize and compress your CSS code, you can use our [online CSS compressor and optimizer](#) based on csstidy. If you want to create a linear or radial gradient as background or border, check our [CSS Gradient Generator](#).

Hey! You found this booklet interesting? Support Converting Colors with the new Membership Option!

The pro membership hides all ads, plus gives you double the colors in the color bucket, and more awesome pro features!

[Learn more, Memberships starting at \\$2.50/m!](#)

**Follow me
on Twitter!**

@ConvertingColor