

Converting Colors

CIELCh(68, 16.877, 53.690)

Have a look what the booklet for
CIELCh(68, 16.877, 53.690) contains.

CIELCh(68, 16.852, 53.698)	3
<i>Conversions</i>	4
<i>Details</i>	6
<i>Harmonies</i>	11
<i>Previews</i>	20
<i>Color Blindness Simulation</i>	23
<i>CSS Examples</i>	26

Color

CIELCh(68, 16.852, 53.698)

Conversions

Conversions Part 1

Format	Color
Hex	C19F8E
RGB	193, 159, 142
RGB Percent	76%, 62%, 56%
CMY	0.2441, 0.3773, 0.4440
CMYK	0.00, 0.18, 0.26, 0.24
HSL	20°, 29%, 66%
HSV	20°, 26%, 76%
XYZ	39.1578, 37.9720, 30.7704
YIQ	167.2280, 25.7210, 1.9210

Conversions

Conversions Part 2

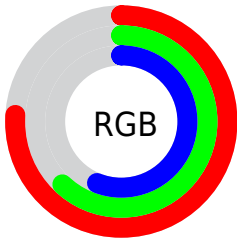
Format	Color
R _Y B	193, 168, 142
Decimal	12689294
CIE Lab	68.00, 9.98, 13.58
CIE LCh	68, 16.852, 53.698
Yxy	37.9720, 0.3629, 0.3519
Android (android.graphics.Color)	4290879374 (0xFFC19F8E)
YUV	167.2280, -12.4374, 22.6020
Hunter-Lab	61.6215, 5.5916, 13.5289

Details

The CIELCh color **68, 16.852, 53.698** is a light color, and the websafe version is hex **CC9999**. A complement of this color would be **70, 14.588, 238.591**, and the grayscale version is **69, 0.008, 296.813**.

A 20% lighter version of the original color is **88, 16.719, 54.002**, and **48, 16.884, 54.057** is the 20% darker color. If you saturate the color by 10%, you get **64, 24.099, 53.076**, and if you desaturate by 10%, it is **72, 10.105, 54.396**.

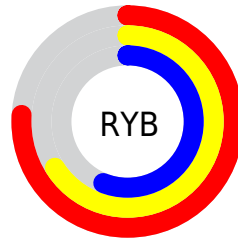
Distribution



Red (76%)

Green (62%)

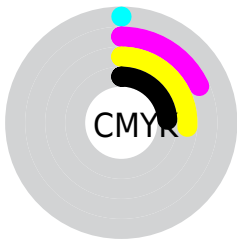
Blue (56%)



Red (76%)

Yellow (66%)

Blue (56%)

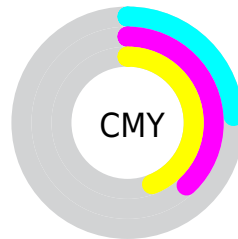


Cyan (0%)

Magenta (18%)

Yellow (26%)

Black (24%)



Cyan (24%)

Magenta (38%)

Yellow (44%)

Brightness & Saturation Gradients

These gradients show how the CIELCh color 68, 16.852, 53.698 changes by changing the brightness by 10 percent. The first figure shows a shift by +10% for each color and the second figure -10%.

Similar to the brightness gradients but the following saturation gradients show a change of the CIELCh color 68, 16.852, 53.698 by changing the saturation by 10% instead.

■ 68, 16.852, 53.698

■ 68, 16.852, 53.698

■ 100, 16.852,
53.698

■ 58, 16.852, 53.698

■ 88, 16.852, 53.698

■ 48, 16.852, 53.698

■ 98, 16.852, 53.698

■ 38, 16.852, 53.698

■ 28, 16.852, 53.698

■ 18, 16.852, 53.698

■ 8, 16.852, 53.698

■ 0, 16.852, 53.698

■ 68, 16.852, 53.698

■ 68, 16.852, 53.698

■ 64, 24.099, 53.076

■ 72, 10.105, 54.396

61, 31.867, 52.526

76, 3.822, 55.078

57, 40.138, 52.067

79, 2.042, 236.227

54, 48.816, 51.680

83, 7.532, 236.870

51, 57.648, 51.284

87, 12.693,
237.662

49, 66.059, 50.664

91, 16.886,
234.836

46, 72.989, 49.401

46, 75.304, 49.027

94, 18.406,
208.481

96, 20.282,
198.170

Harmonies

Complementary

The Complementary color scheme is a pair of colors which are on the opposite of each other on the color wheel.



68, 16.852, 53.698



70, 14.588, 238.591

Rectangle

The Rectangle color scheme consists of four colors that form a rectangle on the color wheel.



68, 16.852, 53.698



68, 16.852, 103.698



68, 16.852, 233.698



68, 16.852, 283.698

Sweetspot

The Sweet Spot groups the original color and five complimentary colors.



68, 16.851, 53.707



94, 5.890, 54.974



65, 26.796, 337.617



50, 4.208, 54.873



99, 0.012, 296.813



52, 0.007, 296.813

Same Dimension

The Same Dimension uses a secret algorithm to generate beautiful new colors.



68, 16.851, 53.707



83, 25.743, 53.316



75, 23.014, 99.368



39, 3.410, 54.892



38, 65.470, 49.515



5, 11.749, 41.754

Inverse Universe

The Inverse Universe completely reimagines the original color for something new.



70, 14.588, 238.591



86, 21.453, 239.508



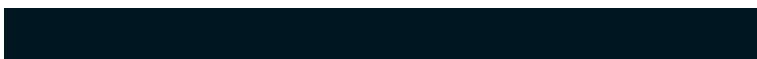
63, 23.875, 285.852



39, 3.257, 236.621



43, 36.455, 261.487



6, 10.826, 250.387

Previews

White Background



This preview shows how the CIELCh color 68, 16.852, 53.698 looks on a white background.

Color Contrast Check

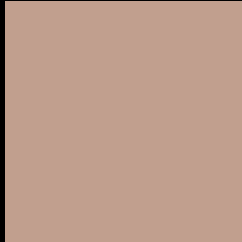
Large Text (above 18pt) WCAG AA × Fail

Any Text WCAG AA × Fail

Large Text (above 18pt) WCAG AAA × Fail

Any Text WCAG AAA × Fail

Black Background



This preview shows how the CIELCh color 68, 16.852, 53.698 looks on a black background.

Color Contrast Check

Large Text (above 18pt) WCAG AA ✓ Pass

Any Text WCAG AA ✓ Pass

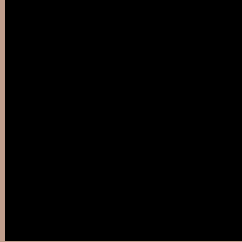
Large Text (above 18pt) WCAG AAA ✓ Pass

Any Text WCAG AAA ✓ Pass

If you want to check with other color combinations, try the [Color Contrast Checker](#).

CIELCh 68, 16.852, 53.698

Background



This preview shows how black text looks on a background with the CIELCh color 68, 16.852, 53.698.



This preview shows how white text looks on a background with the CIELCh color 68, 16.852, 53.698.

Color Blindness Simulation

Color vision deficiency is a very complex topic, and I could not describe the different causes any better than Wikipedia does, so if you want to learn more, you should check out their [article about color blindness](#).

Dichromacy



Original Color

68, 16.852, 53.698

Protanopia

68, 11.536, 90.863

Deuteranopia

68, 16.153, 57.613



Tritanopia
68, 17.150, 358.594

Trichromacy



Original Color
68, 16.852, 53.698

Protanomaly
68, 12.729, 74.326

Deuteranomaly
68, 16.488, 56.747

Tritanomaly
68, 15.437, 16.791

Monochromacy



Original Color
68, 16.852, 53.698

Achromatopsia
68, 0.008, 296.813

Achromatomaly
68, 5.704, 54.828

CSS Examples

Text

The CSS property to change the color of the text to CIELCh 68, 16.852, 53.698 is called "color". The color property can be set on classes, ids or directly on the HTML element.

This example shows how text in the color `rgb(193, 159, 142)` looks like.

```
.text, #text, p{  
    color:rgb(193, 159, 142)  
}
```

If you want to add a text shadow in that color use the text-shadow property, you can generate a text shadow directly with our [CSS Text Shadow Generator](#).

Here you see how black text with a 4 pixel rgb(193, 159, 142) colored shadow looks like.

```
.shadow{ text-shadow: 4px 4px 2px rgb(193, 159, 142) }
```

Border

The CSS property to change the border of an element to CIELCh 68, 16.852, 53.698 is called "border". The border property can be set on classes, ids or directly on the HTML element.

This example shows the color as border, it can be applied via the CSS property "border" or "border-color".

```
.border, #border, table{ border:4px solid rgb(193, 159, 142) }
```

If only the border color should be changed use the property `border-color`.

```
.border{ border-color:rgb(193, 159, 142) }
```

If you want to add a box shadow in that color use:

Here you see how a box with a 4 pixel `rgb(193, 159, 142)` colored shadow looks like.

```
.boxshadow{ -moz-box-shadow:4px 4px 4px  
4px rgb(193, 159, 142); -webkit-box-  
shadow:4px 4px 4px 4px rgb(193, 159, 142);  
box-shadow:4px 4px 4px 4px rgb(193, 159,  
142) }
```

Background

The CSS property to change the background color of an element to CIELCh 68, 16.852, 53.698 is called "background". The background property can be set on classes, ids or directly on the HTML element.

```
.background, #background, body{  
background: rgb(193, 159, 142) }
```

If only the background color should be changed can be used:

```
.background{ background-color: rgb(193,  
159, 142) }
```

This example shows the color as background, it is applied via the CSS property "background".

To optimize and compress your CSS code, you can use our [online CSS compressor and optimizer](#) based on csstidy. If you want to create a linear or radial gradient as background or border, check our [CSS Gradient Generator](#).

Hey! You found this booklet interesting? Support Converting Colors with the new Membership Option!

The pro membership hides all ads, plus gives you double the colors in the color bucket, and more awesome pro features!

[Learn more, Memberships starting at \\$2.50/m!](#)

**Follow me
on Twitter!**

@ConvertingColor