

Converting Colors

CIELCh(68, 17.755, 20.856)

Have a look what the booklet for
CIELCh(68, 17.755, 20.856) contains.

CIELCh(68, 17.542, 21.028)	3
<i>Conversions</i>	4
<i>Details</i>	6
<i>Harmonies</i>	11
<i>Previews</i>	20
<i>Color Blindness Simulation</i>	23
<i>CSS Examples</i>	26

Color

CIELCh(68, 17.542, 21.028)

Conversions

Conversions Part 1

Format	Color
Hex	C79B9B
RGB	199, 155, 155
RGB Percent	78%, 61%, 61%
CMY	0.2194, 0.3920, 0.3920
CMYK	0.00, 0.22, 0.22, 0.22
HSL	0°, 28%, 69%
HSV	0°, 22%, 78%
XYZ	41.2125, 37.9720, 36.1852
YIQ	168.1560, 26.2240, 9.3280

Conversions

Conversions Part 2

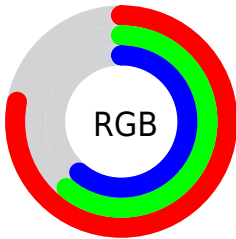
Format	Color
RYB	199, 155, 155
Decimal	13081499
CIELab	68.00, 16.37, 6.29
CIELCh	68, 17.542, 21.028
Yxy	37.9720, 0.3572, 0.3291
Android (android.graphics.Color)	4291271579 (0xFFC79B9B)
YUV	168.1560, -6.4859, 27.0502
Hunter-Lab	61.6215, 11.5435, 8.3189

Details

The CIELCh color **68, 17.542, 21.028** is a light color, and the websafe version is hex **CC9999**. A complement of this color would be **77, 15.160, 198.305**, and the grayscale version is **69, 0.009, 296.813**.

A 20% lighter version of the original color is **88, 16.886, 22.378**, and **48, 17.253, 21.555** is the 20% darker color. If you saturate the color by 10%, you get **63, 26.450, 22.164**, and if you desaturate by 10%, it is **73, 9.238, 20.147**.

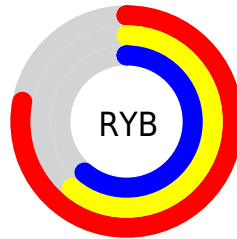
Distribution



Red (78%)

Green (61%)

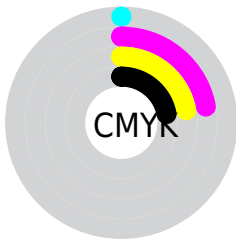
Blue (61%)



Red (78%)

Yellow (61%)

Blue (61%)

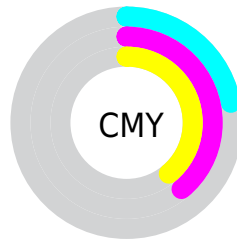


Cyan (0%)

Magenta (22%)

Yellow (22%)

Black (22%)



Cyan (22%)

Magenta (39%)

Yellow (39%)

Brightness & Saturation Gradients

These gradients show how the CIELCh color 68, 17.542, 21.028 changes by changing the brightness by 10 percent. The first figure shows a shift by +10% for each color and the second figure -10%.

Similar to the brightness gradients but the following saturation gradients show a change of the CIELCh color 68, 17.542, 21.028 by changing the saturation by 10% instead.

68, 17.542, 21.028

68, 17.542, 21.028

100, 17.542,
21.028

58, 17.542, 21.028

88, 17.542, 21.028

48, 17.542, 21.028

98, 17.542, 21.028

38, 17.542, 21.028

28, 17.542, 21.028

18, 17.542, 21.028

8, 17.542, 21.028

0, 17.542, 21.028

68, 17.542, 21.028

68, 17.542, 21.028

63, 26.450, 22.164

73, 9.238, 20.147

58, 35.907, 23.633

79, 1.547, 19.184

53, 45.771, 25.548

85, 5.566, 199.116

49, 55.803, 28.016

90, 12.151,
198.650

46, 65.667, 31.087

96, 18.261,
198.304

44, 74.869, 34.610

42, 82.428, 37.948

96, 18.392,
198.289

41, 86.777, 40.001

Harmonies

Complementary

The Complementary color scheme is a pair of colors which are on the opposite of each other on the color wheel.



68, 17.542, 21.028



77, 15.160, 198.305

Rectangle

The Rectangle color scheme consists of four colors that form a rectangle on the color wheel.



68, 17.542, 21.028



68, 17.542, 71.028



68, 17.542, 201.028



68, 17.542, 251.028

Sweetspot

The Sweet Spot groups the original color and five complimentary colors.



68, 17.540, 21.034



95, 6.404, 19.748



69, 28.916, 325.636



50, 4.171, 19.798



0, 0.000, 0.000



53, 0.007, 296.813

Same Dimension

The Same Dimension uses a secret algorithm to generate beautiful new colors.



68, 17.540, 21.034



82, 26.727, 21.595



74, 14.819, 72.687



39, 4.278, 19.930



34, 74.643, 39.777



3, 15.884, 19.410

Inverse Universe

The Inverse Universe completely reimagines the original color for something new.



77, 15.160, 198.305



96, 22.223, 198.056



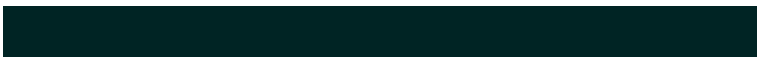
71, 13.974, 258.644



41, 4.034, 198.987



61, 35.884, 196.400



12, 12.982, 196.397

Previews

White Background



This preview shows how the CIELCh color 68, 17.542, 21.028 looks on a white background.

Color Contrast Check

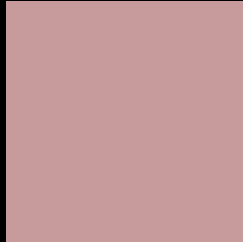
Large Text (above 18pt) WCAG AA × Fail

Any Text WCAG AA × Fail

Large Text (above 18pt) WCAG AAA × Fail

Any Text WCAG AAA × Fail

Black Background



This preview shows how the CIELCh color 68, 17.542, 21.028 looks on a black background.

Color Contrast Check

Large Text (above 18pt) WCAG AA ✓ Pass

Any Text WCAG AA ✓ Pass

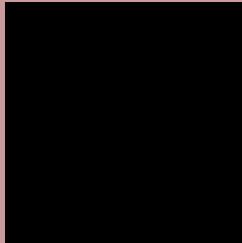
Large Text (above 18pt) WCAG AAA ✓ Pass

Any Text WCAG AAA ✓ Pass

If you want to check with other color combinations, try the [Color Contrast Checker](#).

CIELCh 68, 17.542, 21.028

Background



This preview shows how black text looks on a background with the CIELCh color 68, 17.542, 21.028.



This preview shows how white text looks on a background with the CIELCh color 68, 17.542, 21.028.

Color Blindness Simulation

Color vision deficiency is a very complex topic, and I could not describe the different causes any better than Wikipedia does, so if you want to learn more, you should check out their [article about color blindness](#).

Dichromacy



Original Color


68, 17.542, 21.028

Protanopia

68, 2.902, 68.462

Deuteranopia

68, 10.835, 37.835



Tritanopia
68, 19.400, 1.594

Trichromacy



Original Color
68, 17.542, 21.028

Protanomaly
68, 7.882, 28.015

Deuteranomaly
68, 13.327, 29.955

Tritanomaly
68, 18.455, 9.269

Monochromacy



Original Color
68, 17.542, 21.028

Achromatopsia
69, 0.009, 296.813

Achromatomaly
68, 6.178, 19.882

CSS Examples

Text

The CSS property to change the color of the text to CIELCh 68, 17.542, 21.028 is called "color". The color property can be set on classes, ids or directly on the HTML element.

This example shows how text in the color `rgb(199, 155, 155)` looks like.

```
.text, #text, p{  
    color:rgb(199, 155, 155)  
}
```

If you want to add a text shadow in that color use the text-shadow property, you can generate a text shadow directly with our [CSS Text Shadow Generator](#).

Here you see how black text with a 4 pixel rgb(199, 155, 155) colored shadow looks like.

```
.shadow{ text-shadow: 4px 4px 2px rgb(199, 155, 155) }
```

Border

The CSS property to change the border of an element to CIELCh 68, 17.542, 21.028 is called "border". The border property can be set on classes, ids or directly on the HTML element.

This example shows the color as border, it can be applied via the CSS property "border" or "border-color".

```
.border, #border, table{ border:4px solid rgb(199, 155, 155) }
```

If only the border color should be changed use the property `border-color`.

```
.border{ border-color:rgb(199, 155, 155) }
```

If you want to add a box shadow in that color use:

Here you see how a box with a 4 pixel `rgb(199, 155, 155)` colored shadow looks like.

```
.boxshadow{ -moz-box-shadow:4px 4px 4px  
4px rgb(199, 155, 155); -webkit-box-  
shadow:4px 4px 4px 4px rgb(199, 155, 155);  
box-shadow:4px 4px 4px 4px rgb(199, 155,  
155) }
```

Background

The CSS property to change the background color of an element to CIELCh 68, 17.542, 21.028 is called "background". The background property can be set on classes, ids or directly on the HTML element.

```
.background, #background, body{  
background: rgb(199, 155, 155) }
```

If only the background color should be changed can be used:

```
.background{ background-color: rgb(199,  
155, 155) }
```

This example shows the color as background, it is applied via the CSS property "background".

To optimize and compress your CSS code, you can use our [online CSS compressor and optimizer](#) based on csstidy. If you want to create a linear or radial gradient as background or border, check our [CSS Gradient Generator](#).

Hey! You found this booklet interesting? Support Converting Colors with the new Membership Option!

The pro membership hides all ads, plus gives you double the colors in the color bucket, and more awesome pro features!

[Learn more, Memberships starting at \\$2.50/m!](#)

**Follow me
on Twitter!**

@ConvertingColor