

Converting Colors

CIELCh(68, 18.028, 50.407)

Have a look what the booklet for
CIELCh(68, 18.028, 50.407) contains.

CIELCh(68, 17.947, 51.539)	3
<i>Conversions</i>	4
<i>Details</i>	6
<i>Harmonies</i>	11
<i>Previews</i>	20
<i>Color Blindness Simulation</i>	23
<i>CSS Examples</i>	26

Color

CIELCh(68, 17.947, 51.539)

Conversions

Conversions Part 1

Format	Color
Hex	C39E8D
RGB	195, 158, 141
RGB Percent	76%, 62%, 55%
CMY	0.2353, 0.3804, 0.4471
CMYK	0.00, 0.19, 0.28, 0.24
HSL	19°, 31%, 66%
HSV	19°, 28%, 76%
XYZ	39.5334, 37.9720, 30.4396
YIQ	167.1250, 27.5090, 2.5570

Conversions

Conversions Part 2

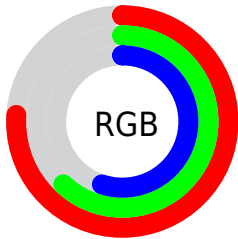
Format	Color
R _Y B	195, 166, 141
Decimal	12820109
CIE Lab	68.00, 11.16, 14.05
CIE LCh	68, 17.947, 51.539
Yxy	37.9720, 0.3662, 0.3518
Android (android.graphics.Color)	4291010189 (0xFFC39E8D)
YUV	167.1250, -12.8796, 24.4464
Hunter-Lab	61.6215, 6.6795, 13.8471

Details

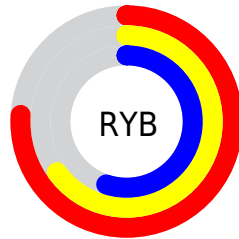
The CIELCh color **68, 17.947, 51.539** is a light color, and the websafe version is hex **CC9999**. A complement of this color would be **70, 15.307, 236.247**, and the grayscale version is **69, 0.009, 296.813**.

A 20% lighter version of the original color is **88, 17.729, 51.923**, and **48, 17.695, 52.466** is the 20% darker color. If you saturate the color by 10%, you get **64, 25.376, 51.026**, and if you desaturate by 10%, it is **72, 11.042, 52.142**.

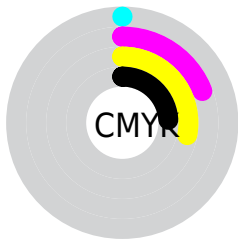
Distribution



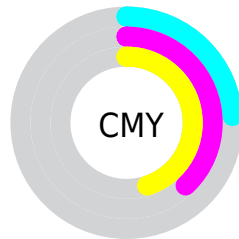
- Red (76%)
- Green (62%)
- Blue (55%)



- Red (76%)
- Yellow (65%)
- Blue (55%)



- Cyan (0%)
- Magenta (19%)
- Yellow (28%)
- Black (24%)



- Cyan (24%)
- Magenta (38%)
- Yellow (45%)

Brightness & Saturation Gradients

These gradients show how the CIELCh color 68, 17.947, 51.539 changes by changing the brightness by 10 percent. The first figure shows a shift by +10% for each color and the second figure -10%.

Similar to the brightness gradients but the following saturation gradients show a change of the CIELCh color 68, 17.947, 51.539 by changing the saturation by 10% instead.

68, 17.947, 51.539

68, 17.947, 51.539

100, 17.947,
51.539

58, 17.947, 51.539

88, 17.947, 51.539

48, 17.947, 51.539

98, 17.947, 51.539

38, 17.947, 51.539

28, 17.947, 51.539

18, 17.947, 51.539

8, 17.947, 51.539

0, 17.947, 51.539

68, 17.947, 51.539

68, 17.947, 51.539

64, 25.376, 51.026

72, 11.042, 52.142

61, 33.349, 50.603

76, 4.627, 52.754

57, 41.840, 50.285

80, 1.345, 233.940

54, 50.740, 50.054

84, 6.921, 234.392

51, 59.766, 49.818

88, 12.148,
235.120

48, 68.271, 49.331

92, 16.312,
231.165

46, 75.198, 48.208

46, 76.749, 48.034

95, 18.500,
203.898

96, 19.618,
198.211

Harmonies

Complementary

The Complementary color scheme is a pair of colors which are on the opposite of each other on the color wheel.



68, 17.947, 51.539



70, 15.307, 236.247

Rectangle

The Rectangle color scheme consists of four colors that form a rectangle on the color wheel.



68, 17.947, 51.539



68, 17.947, 101.539



68, 17.947, 231.539



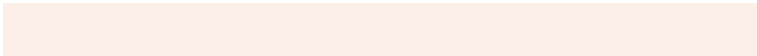
68, 17.947, 281.539

Sweetspot

The Sweet Spot groups the original color and five complimentary colors.



68, 17.946, 51.547



95, 5.944, 52.730



65, 28.976, 336.260



51, 4.283, 52.640



0, 0.000, 0.000



53, 0.007, 296.813

Same Dimension

The Same Dimension uses a secret algorithm to generate beautiful new colors.



68, 17.946, 51.547



83, 26.966, 51.233



75, 23.552, 97.194



39, 3.414, 52.657



38, 66.133, 48.531



5, 11.822, 40.263

Inverse Universe

The Inverse Universe completely reimagines the original color for something new.



70, 15.307, 236.247



87, 22.128, 237.097



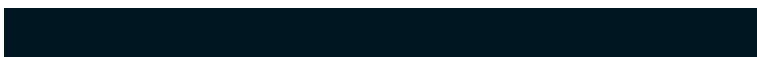
63, 24.307, 284.220



39, 3.253, 234.252



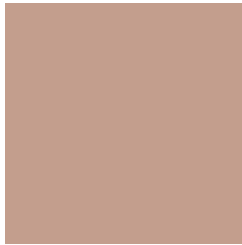
44, 35.321, 258.248



6, 10.676, 247.566

Previews

White Background



This preview shows how the CIELCh color 68, 17.947, 51.539 looks on a white background.

Color Contrast Check

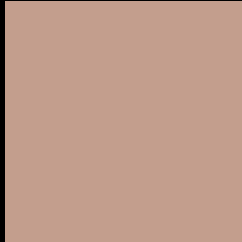
Large Text (above 18pt) WCAG AA × Fail

Any Text WCAG AA × Fail

Large Text (above 18pt) WCAG AAA × Fail

Any Text WCAG AAA × Fail

Black Background



This preview shows how the CIELCh color 68, 17.947, 51.539 looks on a black background.

Color Contrast Check

Large Text (above 18pt) WCAG AA ✓ Pass

Any Text WCAG AA ✓ Pass

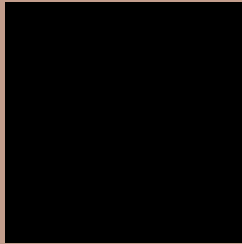
Large Text (above 18pt) WCAG AAA ✓ Pass

Any Text WCAG AAA ✓ Pass

If you want to check with other color combinations, try the [Color Contrast Checker](#).

CIELCh 68, 17.947, 51.539

Background



This preview shows how black text looks on a background with the CIELCh color 68, 17.947, 51.539.

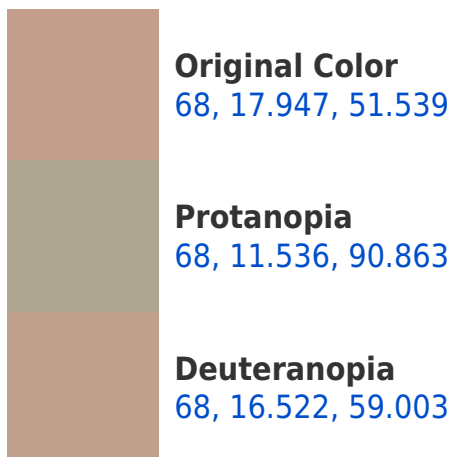


This preview shows how white text looks on a background with the CIELCh color 68, 17.947, 51.539.

Color Blindness Simulation

Color vision deficiency is a very complex topic, and I could not describe the different causes any better than Wikipedia does, so if you want to learn more, you should check out their [article about color blindness](#).

Dichromacy





Tritanopia
68, 18.267, 0.174

Trichromacy



Original Color
68, 17.947, 51.539

Protanomaly
68, 12.796, 70.032

Deuteranomaly
68, 16.851, 55.907

Tritanomaly
68, 16.672, 17.221

Monochromacy



Original Color
68, 17.947, 51.539

Achromatopsia
68, 0.008, 296.813

Achromatomaly
68, 6.032, 52.687

CSS Examples

Text

The CSS property to change the color of the text to CIELCh 68, 17.947, 51.539 is called "color". The color property can be set on classes, ids or directly on the HTML element.

This example shows how text in the color `rgb(195, 158, 141)` looks like.

```
.text, #text, p{  
    color:rgb(195, 158, 141)  
}
```

If you want to add a text shadow in that color use the text-shadow property, you can generate a text shadow directly with our [CSS Text Shadow Generator](#).

Here you see how black text with a 4 pixel rgb(195, 158, 141) colored shadow looks like.

```
.shadow{ text-shadow: 4px 4px 2px rgb(195, 158, 141) }
```

Border

The CSS property to change the border of an element to CIELCh 68, 17.947, 51.539 is called "border". The border property can be set on classes, ids or directly on the HTML element.

This example shows the color as border, it can be applied via the CSS property "border" or "border-color".

```
.border, #border, table{ border:4px solid rgb(195, 158, 141) }
```

If only the border color should be changed use the property `border-color`.

```
.border{ border-color:rgb(195, 158, 141) }
```

If you want to add a box shadow in that color use:

Here you see how a box with a 4 pixel `rgb(195, 158, 141)` colored shadow looks like.

```
.boxshadow{ -moz-box-shadow:4px 4px 4px  
4px rgb(195, 158, 141); -webkit-box-  
shadow:4px 4px 4px 4px rgb(195, 158, 141);  
box-shadow:4px 4px 4px 4px rgb(195, 158,  
141) }
```

Background

The CSS property to change the background color of an element to CIELCh 68, 17.947, 51.539 is called "background". The background property can be set on classes, ids or directly on the HTML element.

```
.background, #background, body{  
background: rgb(195, 158, 141) }
```

If only the background color should be changed can be used:

```
.background{ background-color: rgb(195,  
158, 141) }
```

This example shows the color as background, it is applied via the CSS property "background".

To optimize and compress your CSS code, you can use our [online CSS compressor and optimizer](#) based on csstidy. If you want to create a linear or radial gradient as background or border, check our [CSS Gradient Generator](#).

Hey! You found this booklet interesting? Support Converting Colors with the new Membership Option!

The pro membership hides all ads, plus gives you double the colors in the color bucket, and more awesome pro features!

[Learn more, Memberships starting at \\$2.50/m!](#)

**Follow me
on Twitter!**

@ConvertingColor