

Converting Colors

CIELCh(68, 18.308, 18.139)

Have a look what the booklet for
CIELCh(68, 18.308, 18.139) contains.

CIELCh(68, 18.320, 17.731)	3
<i>Conversions</i>	4
<i>Details</i>	6
<i>Harmonies</i>	11
<i>Previews</i>	20
<i>Color Blindness Simulation</i>	23
<i>CSS Examples</i>	26

Color

CIELCh(68, 18.320, 17.731)

Conversions

Conversions Part 1

Format	Color
Hex	C89A9C
RGB	200, 154, 156
RGB Percent	78%, 60%, 61%
CMY	0.2142, 0.3947, 0.3868
CMYK	0.00, 0.23, 0.22, 0.21
HSL	357°, 30%, 70%
HSV	357°, 23%, 79%
XYZ	41.5650, 37.9720, 36.7485
YIQ	167.9820, 26.7740, 10.3740

Conversions

Conversions Part 2

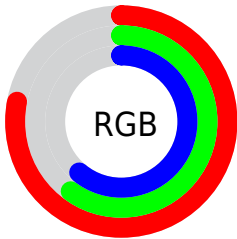
Format	Color
R _Y B	200, 154, 156
Decimal	13146780
CIE Lab	68.00, 17.45, 5.58
CIE LCh	68, 18.320, 17.731
Yxy	37.9720, 0.3574, 0.3265
Android (android.graphics.Color)	4291336860 (0xFFC89A9C)
YUV	167.9820, -5.9071, 28.0798
Hunter-Lab	61.6215, 12.5646, 7.7769

Details

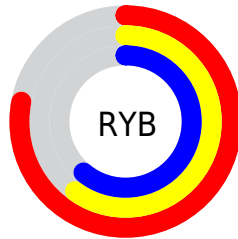
The CIELCh color **68, 18.320, 17.731** is a light color, and the websafe version is hex **CC9999**. A complement of this color would be **78, 15.931, 194.362**, and the grayscale version is **69, 0.009, 296.813**.

A 20% lighter version of the original color is **88, 17.220, 18.952**, and **48, 18.072, 18.033** is the 20% darker color. If you saturate the color by 10%, you get **63, 27.205, 18.987**, and if you desaturate by 10%, it is **73, 9.976, 16.734**.

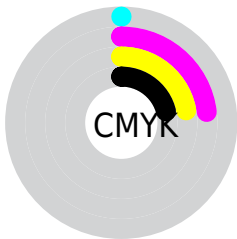
Distribution



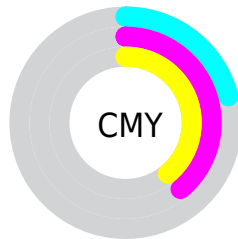
- Red (78%)
- Green (60%)
- Blue (61%)



- Red (78%)
- Yellow (60%)
- Blue (61%)



- Cyan (0%)
- Magenta (23%)
- Yellow (22%)
- Black (21%)



- Cyan (21%)
- Magenta (39%)
- Yellow (39%)

Brightness & Saturation Gradients

These gradients show how the CIELCh color 68, 18.320, 17.731 changes by changing the brightness by 10 percent. The first figure shows a shift by +10% for each color and the second figure -10%.

Similar to the brightness gradients but the following saturation gradients show a change of the CIELCh color 68, 18.320, 17.731 by changing the saturation by 10% instead.

68, 18.320, 17.731

68, 18.320, 17.731

100, 18.320,
17.731

58, 18.320, 17.731

88, 18.320, 17.731

48, 18.320, 17.731

98, 18.320, 17.731

38, 18.320, 17.731

28, 18.320, 17.731

18, 18.320, 17.731

8, 18.320, 17.731

0, 18.320, 17.731

68, 18.320, 17.731

68, 18.320, 17.731

63, 27.205, 18.987

73, 9.976, 16.734

■ 58, 36.555, 20.583

■ 79, 2.201, 15.759

■ 53, 46.203, 22.636

■ 85, 5.027, 195.483

■ 49, 55.895, 25.264

■ 90, 11.746,
194.900

■ 46, 65.307, 28.545

■ 96, 18.004,
194.450

■ 44, 74.052, 32.396

■ 42, 81.486, 36.333

■ 96, 17.986,
198.315

■ 42, 85.392, 38.434

Harmonies

Complementary

The Complementary color scheme is a pair of colors which are on the opposite of each other on the color wheel.



68, 18.320, 17.731



78, 15.931, 194.362

Rectangle

The Rectangle color scheme consists of four colors that form a rectangle on the color wheel.



68, 18.320, 17.731



68, 18.320, 67.731



68, 18.320, 197.731



68, 18.320, 247.731

Sweetspot

The Sweet Spot groups the original color and five complimentary colors.



68, 18.318, 17.737



95, 6.412, 16.208



69, 29.778, 324.267



50, 4.175, 16.263



0, 0.000, 0.000



53, 0.007, 296.813

Same Dimension

The Same Dimension uses a secret algorithm to generate beautiful new colors.



68, 18.318, 17.737



81, 27.678, 18.379



73, 15.160, 67.178



39, 4.281, 16.412



34, 72.916, 38.002



3, 15.905, 17.156

Inverse Universe

The Inverse Universe completely reimagines the original color for something new.



68, 18.318, 17.737



81, 27.678, 18.379



72, 13.983, 253.035



39, 4.281, 16.412



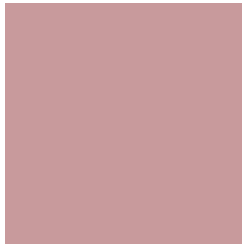
34, 72.916, 38.002



3, 15.905, 17.156

Previews

White Background



This preview shows how the CIELCh color 68, 18.320, 17.731 looks on a white background.

Color Contrast Check

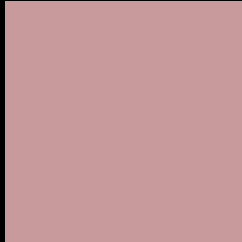
Large Text (above 18pt) WCAG AA × Fail

Any Text WCAG AA × Fail

Large Text (above 18pt) WCAG AAA × Fail

Any Text WCAG AAA × Fail

Black Background



This preview shows how the CIELCh color 68, 18.320, 17.731 looks on a black background.

Color Contrast Check

Large Text (above 18pt) WCAG AA ✓ Pass

Any Text WCAG AA ✓ Pass

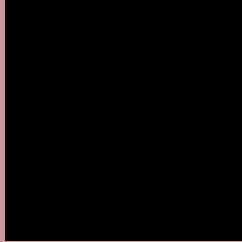
Large Text (above 18pt) WCAG AAA ✓ Pass

Any Text WCAG AAA ✓ Pass

If you want to check with other color combinations, try the [Color Contrast Checker](#).

CIELCh 68, 18.320, 17.731

Background



This preview shows how black text looks on a background with the CIELCh color 68, 18.320, 17.731.



This preview shows how white text looks on a background with the CIELCh color 68, 18.320, 17.731.

Color Blindness Simulation

Color vision deficiency is a very complex topic, and I could not describe the different causes any better than Wikipedia does, so if you want to learn more, you should check out their [article about color blindness](#).

Dichromacy



Original Color

68, 18.320, 17.731

Protanopia

68, 2.512, 60.252

Deuteranopia

68, 10.655, 35.092



Tritanopia
68, 19.773, 2.031

Trichromacy



Original Color
68, 18.320, 17.731

Protanomaly
68, 7.806, 24.061

Deuteranomaly
68, 13.213, 27.657

Tritanomaly
68, 19.422, 6.684

Monochromacy



Original Color
68, 18.320, 17.731

Achromatopsia
69, 0.009, 296.813

Achromatomaly
68, 6.580, 15.162

CSS Examples

Text

The CSS property to change the color of the text to CIELCh 68, 18.320, 17.731 is called "color". The color property can be set on classes, ids or directly on the HTML element.

This example shows how text in the color `rgb(200, 154, 156)` looks like.

```
.text, #text, p{  
    color:rgb(200, 154, 156)  
}
```

If you want to add a text shadow in that color use the text-shadow property, you can generate a text shadow directly with our [CSS Text Shadow Generator](#).

Here you see how black text with a 4 pixel rgb(200, 154, 156) colored shadow looks like.

```
.shadow{ text-shadow: 4px 4px 2px rgb(200, 154, 156) }
```

Border

The CSS property to change the border of an element to CIELCh 68, 18.320, 17.731 is called "border". The border property can be set on classes, ids or directly on the HTML element.

This example shows the color as border, it can be applied via the CSS property "border" or "border-color".

```
.border, #border, table{ border:4px solid rgb(200, 154, 156) }
```

If only the border color should be changed use the property `border-color`.

```
.border{ border-color:rgb(200, 154, 156) }
```

If you want to add a box shadow in that color use:

Here you see how a box with a 4 pixel `rgb(200, 154, 156)` colored shadow looks like.

```
.boxshadow{ -moz-box-shadow:4px 4px 4px  
4px rgb(200, 154, 156); -webkit-box-  
shadow:4px 4px 4px 4px rgb(200, 154, 156);  
box-shadow:4px 4px 4px 4px rgb(200, 154,  
156) }
```

Background

The CSS property to change the background color of an element to CIELCh 68, 18.320, 17.731 is called "background". The background property can be set on classes, ids or directly on the HTML element.

```
.background, #background, body{  
background: rgb(200, 154, 156) }
```

If only the background color should be changed can be used:

```
.background{ background-color: rgb(200,  
154, 156) }
```

This example shows the color as background, it is applied via the CSS property "background".

To optimize and compress your CSS code, you can use our [online CSS compressor and optimizer](#) based on csstidy. If you want to create a linear or radial gradient as background or border, check our [CSS Gradient Generator](#).

Hey! You found this booklet interesting? Support Converting Colors with the new Membership Option!

The pro membership hides all ads, plus gives you double the colors in the color bucket, and more awesome pro features!

[Learn more, Memberships starting at \\$2.50/m!](#)

**Follow me
on Twitter!**

@ConvertingColor