

Converting Colors

CIELCh(68, 18.423, 38.033)

Have a look what the booklet for
CIELCh(68, 18.423, 38.033) contains.

CIELCh(68, 18.423, 38.033)	3
<i>Conversions</i>	4
<i>Details</i>	6
<i>Harmonies</i>	11
<i>Previews</i>	20
<i>Color Blindness Simulation</i>	23
<i>CSS Examples</i>	26

Color

CIELCh(68, 18.423, 38.033)

Conversions

Conversions Part 1

Format	Color
Hex	C79C92
RGB	199, 156, 146
RGB Percent	78%, 61%, 57%
CMY	0.2198, 0.3884, 0.4276
CMYK	0.00, 0.22, 0.27, 0.22
HSL	11°, 32%, 68%
HSV	11°, 27%, 78%
XYZ	40.6069, 37.9720, 32.3660
YIQ	167.7170, 28.8380, 6.0060

Conversions

Conversions Part 2

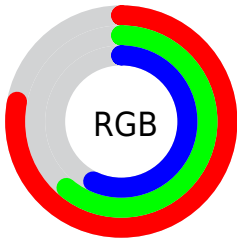
Format	Color
R_{YB}	199, 158, 146
Decimal	13081746
CIE Lab	68.00, 14.51, 11.35
CIE LCh	68, 18.423, 38.033
Yxy	37.9720, 0.3660, 0.3423
Android (android.graphics.Color)	4291271826 (0xFFC79C92)
YUV	167.7170, -10.7065, 27.4352
Hunter-Lab	61.6215, 9.7892, 11.9936

Details

The CIELCh color **68, 18.423, 38.033** is a light color, and the websafe version is hex **CC9999**. A complement of this color would be **74, 15.357, 219.172**, and the grayscale version is **69, 0.009, 296.813**.

A 20% lighter version of the original color is **88, 17.767, 39.165**, and **48, 18.166, 38.029** is the 20% darker color. If you saturate the color by 10%, you get **64, 26.416, 38.264**, and if you desaturate by 10%, it is **73, 11.037, 37.966**.

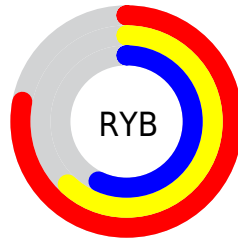
Distribution



Red (78%)

Green (61%)

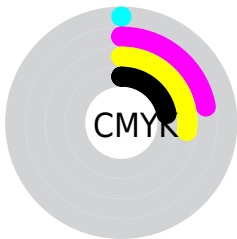
Blue (57%)



Red (78%)

Yellow (62%)

Blue (57%)

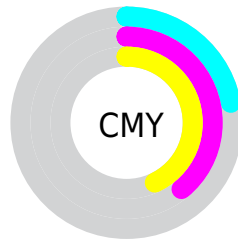


Cyan (0%)

Magenta (22%)

Yellow (27%)

Black (22%)



Cyan (22%)

Magenta (39%)

Yellow (43%)

Brightness & Saturation Gradients

These gradients show how the CIELCh color 68, 18.423, 38.033 changes by changing the brightness by 10 percent. The first figure shows a shift by +10% for each color and the second figure -10%.

Similar to the brightness gradients but the following saturation gradients show a change of the CIELCh color 68, 18.423, 38.033 by changing the saturation by 10% instead.

68, 18.423, 38.033

68, 18.423, 38.033

100, 18.423,
38.033

58, 18.423, 38.033

88, 18.423, 38.033

48, 18.423, 38.033

98, 18.423, 38.033

38, 18.423, 38.033

28, 18.423, 38.033

18, 18.423, 38.033

8, 18.423, 38.033

0, 18.423, 38.033

68, 18.423, 38.033

68, 18.423, 38.033

64, 26.416, 38.264

73, 11.037, 37.966

■ 59, 35.026, 38.684

■ 77, 4.225, 37.956

■ 56, 44.212, 39.338

■ 82, 2.061, 218.511

■ 52, 53.851, 40.241

■ 87, 7.874, 218.548

■ 49, 63.656, 41.334

■ 91, 13.270,
218.800

■ 46, 72.988, 42.377

■ 96, 17.697,
202.012

■ 44, 80.547, 42.809

■ 43, 82.837, 43.048

■ 96, 18.420,
198.287

Harmonies

Complementary

The Complementary color scheme is a pair of colors which are on the opposite of each other on the color wheel.



68, 18.423, 38.033



74, 15.357, 219.172

Rectangle

The Rectangle color scheme consists of four colors that form a rectangle on the color wheel.



68, 18.423, 38.033



68, 18.423, 88.033



68, 18.423, 218.033



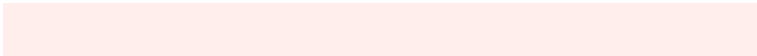
68, 18.423, 268.033

Sweetspot

The Sweet Spot groups the original color and five complimentary colors.



68, 18.422, 38.041



95, 6.268, 37.964



67, 30.714, 331.614



50, 4.482, 37.966



0, 0.000, 0.000



53, 0.007, 296.813

Same Dimension

The Same Dimension uses a secret algorithm to generate beautiful new colors.



68, 18.422, 38.041



82, 27.738, 38.150



75, 20.632, 89.065



40, 3.650, 37.965



36, 71.145, 43.361



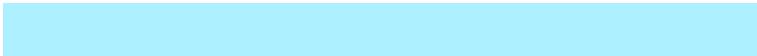
5, 14.241, 30.402

Inverse Universe

The Inverse Universe completely reimagines the original color for something new.



74, 15.357, 219.172



91, 22.085, 219.547



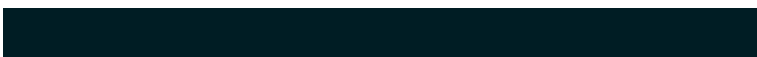
67, 20.619, 276.383



41, 3.443, 218.490



51, 31.298, 232.727



9, 11.202, 224.244

Previews

White Background



This preview shows how the CIELCh color 68, 18.423, 38.033 looks on a white background.

Color Contrast Check

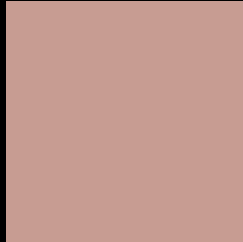
Large Text (above 18pt) WCAG AA × Fail

Any Text WCAG AA × Fail

Large Text (above 18pt) WCAG AAA × Fail

Any Text WCAG AAA × Fail

Black Background



This preview shows how the CIELCh color 68, 18.423, 38.033 looks on a black background.

Color Contrast Check

Large Text (above 18pt) WCAG AA ✓ Pass

Any Text WCAG AA ✓ Pass

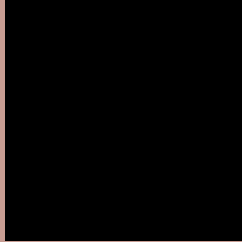
Large Text (above 18pt) WCAG AAA ✓ Pass

Any Text WCAG AAA ✓ Pass

If you want to check with other color combinations, try the [Color Contrast Checker](#).

CIELCh 68, 18.423, 38.033

Background



This preview shows how black text looks on a background with the CIELCh color 68, 18.423, 38.033.



This preview shows how white text looks on a background with the CIELCh color 68, 18.423, 38.033.

Color Blindness Simulation

Color vision deficiency is a very complex topic, and I could not describe the different causes any better than Wikipedia does, so if you want to learn more, you should check out their [article about color blindness](#).

Dichromacy



Original Color

68, 18.423, 38.033

Protanopia

68, 8.149, 89.601

Deuteranopia

68, 14.418, 54.780



Tritanopia
68, 19.773, 2.031

Trichromacy



Original Color
68, 18.423, 38.033

Protanomaly
68, 10.733, 61.343

Deuteranomaly
68, 15.895, 49.094

Tritanomaly
68, 18.323, 14.332

Monochromacy



Original Color
68, 18.423, 38.033

Achromatopsia
69, 0.009, 296.813

Achromatomaly
69, 6.223, 40.382

CSS Examples

Text

The CSS property to change the color of the text to CIELCh 68, 18.423, 38.033 is called "color". The color property can be set on classes, ids or directly on the HTML element.

This example shows how text in the color `rgb(199, 156, 146)` looks like.

```
.text, #text, p{  
    color:rgb(199, 156, 146)  
}
```

If you want to add a text shadow in that color use the text-shadow property, you can generate a text shadow directly with our [CSS Text Shadow Generator](#).

Here you see how black text with a 4 pixel rgb(199, 156, 146) colored shadow looks like.

```
.shadow{ text-shadow: 4px 4px 2px rgb(199, 156, 146) }
```

Border

The CSS property to change the border of an element to CIELCh 68, 18.423, 38.033 is called "border". The border property can be set on classes, ids or directly on the HTML element.

This example shows the color as border, it can be applied via the CSS property "border" or "border-color".

```
.border, #border, table{ border:4px solid rgb(199, 156, 146) }
```

If only the border color should be changed use the property `border-color`.

```
.border{ border-color:rgb(199, 156, 146) }
```

If you want to add a box shadow in that color use:

Here you see how a box with a 4 pixel `rgb(199, 156, 146)` colored shadow looks like.

```
.boxshadow{ -moz-box-shadow:4px 4px 4px  
4px rgb(199, 156, 146); -webkit-box-  
shadow:4px 4px 4px 4px rgb(199, 156, 146);  
box-shadow:4px 4px 4px 4px rgb(199, 156,  
146) }
```

Background

The CSS property to change the background color of an element to CIELCh 68, 18.423, 38.033 is called "background". The background property can be set on classes, ids or directly on the HTML element.

```
.background, #background, body{  
background: rgb(199, 156, 146) }
```

If only the background color should be changed can be used:

```
.background{ background-color: rgb(199,  
156, 146) }
```

This example shows the color as background, it is applied via the CSS property "background".

To optimize and compress your CSS code, you can use our [online CSS compressor and optimizer](#) based on csstidy. If you want to create a linear or radial gradient as background or border, check our [CSS Gradient Generator](#).

Hey! You found this booklet interesting? Support Converting Colors with the new Membership Option!

The pro membership hides all ads, plus gives you double the colors in the color bucket, and more awesome pro features!

[Learn more, Memberships starting at \\$2.50/m!](#)

**Follow me
on Twitter!**

@ConvertingColor