

Converting Colors

CIELCh(68, 19.047, 36.801)

Have a look what the booklet for
CIELCh(68, 19.047, 36.801) contains.

CIELCh(68, 19.054, 35.851)	3
<i>Conversions</i>	4
<i>Details</i>	6
<i>Harmonies</i>	11
<i>Previews</i>	20
<i>Color Blindness Simulation</i>	23
<i>CSS Examples</i>	26

Color

CIELCh(68, 19.054, 35.851)

Conversions

Conversions Part 1

Format	Color
Hex	C89B92
RGB	200, 155, 146
RGB Percent	78%, 61%, 57%
CMY	0.2143, 0.3908, 0.4261
CMYK	0.00, 0.22, 0.27, 0.21
HSL	10°, 33%, 68%
HSV	10°, 27%, 79%
XYZ	40.9095, 37.9720, 32.5052
YIQ	167.4290, 29.7090, 6.7410

Conversions

Conversions Part 2

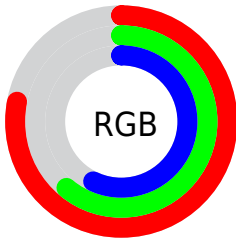
Format	Color
R _Y B	200, 157, 146
Decimal	13147026
CIE Lab	68.00, 15.44, 11.16
CIE LCh	68, 19.054, 35.851
Yxy	37.9720, 0.3673, 0.3409
Android (android.graphics.Color)	4291337106 (0xFFC89B92)
YUV	167.4290, -10.5645, 28.5648
Hunter-Lab	61.6215, 10.6658, 11.8596

Details

The CIELCh color **68, 19.054, 35.851** is a light color, and the websafe version is hex **CC9999**. A complement of this color would be **75, 15.808, 216.389**, and the grayscale version is **69, 0.009, 296.813**.

A 20% lighter version of the original color is **88, 17.966, 37.274**, and **48, 18.855, 35.726** is the 20% darker color. If you saturate the color by 10%, you get **64, 27.229, 36.223**, and if you desaturate by 10%, it is **73, 11.496, 35.660**.

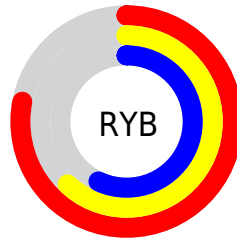
Distribution



Red (78%)

Green (61%)

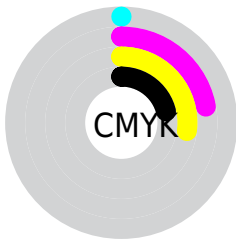
Blue (57%)



Red (78%)

Yellow (62%)

Blue (57%)

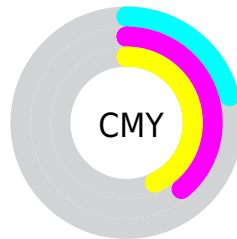


Cyan (0%)

Magenta (22%)

Yellow (27%)

Black (21%)



Cyan (21%)

Magenta (39%)

Yellow (43%)

Brightness & Saturation Gradients

These gradients show how the CIELCh color 68, 19.054, 35.851 changes by changing the brightness by 10 percent. The first figure shows a shift by +10% for each color and the second figure -10%.

Similar to the brightness gradients but the following saturation gradients show a change of the CIELCh color 68, 19.054, 35.851 by changing the saturation by 10% instead.

68, 19.054, 35.851

68, 19.054, 35.851

100, 19.054,
35.851

58, 19.054, 35.851

88, 19.054, 35.851

48, 19.054, 35.851

98, 19.054, 35.851

38, 19.054, 35.851

28, 19.054, 35.851

18, 19.054, 35.851

8, 19.054, 35.851

0, 19.054, 35.851

68, 19.054, 35.851

68, 19.054, 35.851

64, 27.229, 36.223

73, 11.496, 35.660

59, 36.025, 36.805

77, 4.528, 35.543

55, 45.389, 37.649

82, 1.899, 216.015

52, 55.182, 38.774

87, 7.838, 215.932

48, 65.097, 40.122

92, 13.343,
216.095

46, 74.466, 41.440

96, 17.990,
198.315

44, 81.944, 42.140

43, 83.985, 42.449

Harmonies

Complementary

The Complementary color scheme is a pair of colors which are on the opposite of each other on the color wheel.



68, 19.054, 35.851



75, 15.808, 216.389

Rectangle

The Rectangle color scheme consists of four colors that form a rectangle on the color wheel.



68, 19.054, 35.851



68, 19.054, 85.851



68, 19.054, 215.851



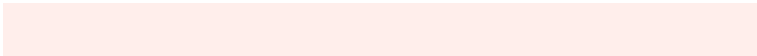
68, 19.054, 265.851

Sweetspot

The Sweet Spot groups the original color and five complimentary colors.



68, 19.053, 35.858



95, 6.356, 35.560



67, 31.632, 331.047



50, 4.546, 35.578



0, 0.000, 0.000



53, 0.007, 296.813

Same Dimension

The Same Dimension uses a secret algorithm to generate beautiful new colors.



68, 19.053, 35.858



82, 28.138, 36.034



75, 20.705, 87.682



39, 3.702, 35.575



35, 71.739, 42.719



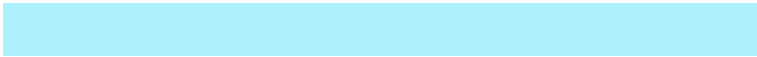
5, 14.403, 28.997

Inverse Universe

The Inverse Universe completely reimagines the original color for something new.



75, 15.808, 216.389



91, 22.345, 216.664



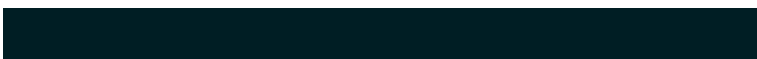
67, 20.580, 275.172



41, 3.489, 215.906



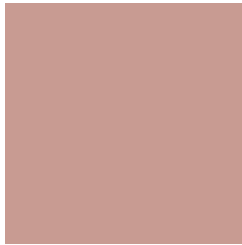
52, 31.180, 227.961



9, 11.302, 220.406

Previews

White Background



This preview shows how the CIELCh color 68, 19.054, 35.851 looks on a white background.

Color Contrast Check

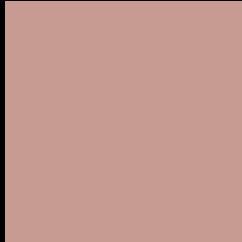
Large Text (above 18pt) WCAG AA × Fail

Any Text WCAG AA × Fail

Large Text (above 18pt) WCAG AAA × Fail

Any Text WCAG AAA × Fail

Black Background



This preview shows how the CIE LCh color 68, 19.054, 35.851 looks on a black background.

Color Contrast Check

Large Text (above 18pt) WCAG AA ✓ Pass

Any Text WCAG AA ✓ Pass

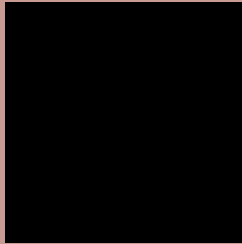
Large Text (above 18pt) WCAG AAA ✓ Pass

Any Text WCAG AAA ✓ Pass

If you want to check with other color combinations, try the [Color Contrast Checker](#).

CIELCh 68, 19.054, 35.851

Background



This preview shows how black text looks on a background with the CIELCh color 68, 19.054, 35.851.



This preview shows how white text looks on a background with the CIELCh color 68, 19.054, 35.851.

Color Blindness Simulation

Color vision deficiency is a very complex topic, and I could not describe the different causes any better than Wikipedia does, so if you want to learn more, you should check out their [article about color blindness](#).

Dichromacy



Original Color

68, 19.054, 35.851

Protanopia

68, 7.632, 88.305

Deuteranopia

68, 14.418, 54.780



Tritanopia
68, 20.019, 3.959

Trichromacy



Original Color
68, 19.054, 35.851

Protanomaly
68, 10.343, 55.532

Deuteranomaly
68, 15.997, 46.775

Tritanomaly
68, 18.726, 14.523

Monochromacy



Original Color
68, 19.054, 35.851

Achromatopsia
69, 0.009, 296.813

Achromatomaly
68, 6.813, 33.833

CSS Examples

Text

The CSS property to change the color of the text to CIELCh 68, 19.054, 35.851 is called "color". The color property can be set on classes, ids or directly on the HTML element.

This example shows how text in the color `rgb(200, 155, 146)` looks like.

```
.text, #text, p{  
    color:rgb(200, 155, 146)  
}
```

If you want to add a text shadow in that color use the text-shadow property, you can generate a text shadow directly with our [CSS Text Shadow Generator](#).

Here you see how black text with a 4 pixel rgb(200, 155, 146) colored shadow looks like.

```
.shadow{ text-shadow: 4px 4px 2px rgb(200, 155, 146) }
```

Border

The CSS property to change the border of an element to CIELCh 68, 19.054, 35.851 is called "border". The border property can be set on classes, ids or directly on the HTML element.

This example shows the color as border, it can be applied via the CSS property "border" or "border-color".

```
.border, #border, table{ border:4px solid rgb(200, 155, 146) }
```

If only the border color should be changed use the property `border-color`.

```
.border{ border-color:rgb(200, 155, 146) }
```

If you want to add a box shadow in that color use:

Here you see how a box with a 4 pixel `rgb(200, 155, 146)` colored shadow looks like.

```
.boxshadow{ -moz-box-shadow:4px 4px 4px  
4px rgb(200, 155, 146); -webkit-box-  
shadow:4px 4px 4px 4px rgb(200, 155, 146);  
box-shadow:4px 4px 4px 4px rgb(200, 155,  
146) }
```

Background

The CSS property to change the background color of an element to CIELCh 68, 19.054, 35.851 is called "background". The background property can be set on classes, ids or directly on the HTML element.

```
.background, #background, body{  
background: rgb(200, 155, 146) }
```

If only the background color should be changed can be used:

```
.background{ background-color: rgb(200,  
155, 146) }
```

This example shows the color as background, it is applied via the CSS property "background".

To optimize and compress your CSS code, you can use our [online CSS compressor and optimizer](#) based on csstidy. If you want to create a linear or radial gradient as background or border, check our [CSS Gradient Generator](#).

Hey! You found this booklet interesting? Support Converting Colors with the new Membership Option!

The pro membership hides all ads, plus gives you double the colors in the color bucket, and more awesome pro features!

[Learn more, Memberships starting at \\$2.50/m!](#)

**Follow me
on Twitter!**

@ConvertingColor