

# Converting Colors

CIELCh(68, 19.302, 25.274)

Have a look what the booklet for  
CIELCh(68, 19.302, 25.274) contains.

<b>CIELCh(68, 19.342, 24.400)</b> .....	3
<i><b>Conversions</b></i> .....	4
<i><b>Details</b></i> .....	6
<i><b>Harmonies</b></i> .....	11
<i><b>Previews</b></i> .....	20
<i><b>Color Blindness Simulation</b></i> .....	23
<i><b>CSS Examples</b></i> .....	26

# Color

**CIELCh(68, 19.342, 24.400)**

# Conversions

## Conversions Part 1

Format	Color
Hex	CA9A98
RGB	202, 154, 152
RGB Percent	79%, 60%, 60%
CMY	0.2075, 0.3958, 0.4036
CMYK	0.00, 0.24, 0.25, 0.21
HSL	2°, 32%, 69%
HSV	2°, 25%, 79%
XYZ	41.6192, 37.9720, 34.8726
YIQ	168.1240, 29.2500, 9.5540

# Conversions

## Conversions Part 2

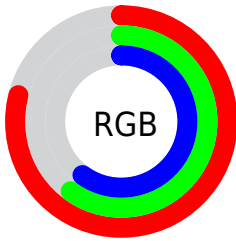
Format	Color
R <sub>Y</sub> B	202, 154, 152
Decimal	13277848
CIE Lab	68.00, 17.61, 7.99
CIE LCh	68, 19.342, 24.400
Yxy	37.9720, 0.3636, 0.3317
Android (android.graphics.Color)	4291467928 (0xFFCA9A98)
YUV	168.1240, -7.9491, 29.7093
Hunter-Lab	61.6215, 12.7214, 9.5819

# Details

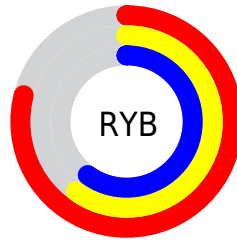
The CIELCh color **68, 19.342, 24.400** is a light color, and the websafe version is hex **CC9999**. A complement of this color would be **77, 16.341, 202.023**, and the grayscale version is **69, 0.009, 296.813**.

A 20% lighter version of the original color is **88, 17.421, 25.755**, and **48, 19.245, 25.228** is the 20% darker color. If you saturate the color by 10%, you get **63, 28.229, 25.426**, and if you desaturate by 10%, it is **73, 11.072, 23.626**.

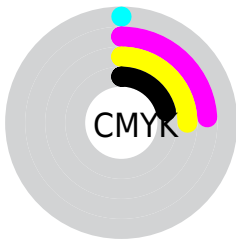
# Distribution



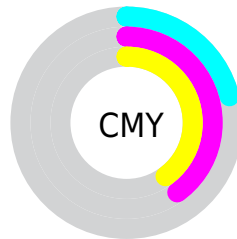
- Red (79%)
- Green (60%)
- Blue (60%)



- Red (79%)
- Yellow (60%)
- Blue (60%)



- Cyan (0%)
- Magenta (24%)
- Yellow (25%)
- Black (21%)



- Cyan (21%)
- Magenta (40%)
- Yellow (40%)

# Brightness & Saturation Gradients

These gradients show how the CIELCh color 68, 19.342, 24.400 changes by changing the brightness by 10 percent. The first figure shows a shift by +10% for each color and the second figure -10%.

Similar to the brightness gradients but the following saturation gradients show a change of the CIELCh color 68, 19.342, 24.400 by changing the saturation by 10% instead.



68, 19.342, 24.400

68, 19.342, 24.400

100, 19.342,  
24.400

58, 19.342, 24.400

88, 19.342, 24.400

48, 19.342, 24.400

98, 19.342, 24.400

38, 19.342, 24.400

28, 19.342, 24.400

18, 19.342, 24.400

8, 19.342, 24.400

0, 19.342, 24.400

68, 19.342, 24.400

68, 19.342, 24.400

63, 28.229, 25.426

73, 11.072, 23.626

58, 37.688, 26.772

79, 3.423, 22.944

54, 47.591, 28.536

84, 3.642, 202.835

50, 57.717, 30.795

90, 10.171,  
202.417

47, 67.724, 33.554

95, 16.222,  
202.158

44, 77.016, 36.586

43, 84.315, 39.150

97, 17.465,  
198.348

42, 87.229, 40.377

# Harmonies

# Complementary

The Complementary color scheme is a pair of colors which are on the opposite of each other on the color wheel.



68, 19.342, 24.400



77, 16.341, 202.023

# Rectangle

The Rectangle color scheme consists of four colors that form a rectangle on the color wheel.



68, 19.342, 24.400



68, 19.342, 74.400



68, 19.342, 204.400



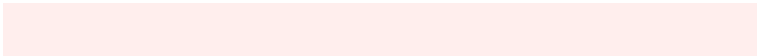
68, 19.342, 254.400

# Sweetspot

The Sweet Spot groups the original color and five complimentary colors.



68, 19.340, 24.406



95, 6.156, 23.119



69, 32.037, 326.705



50, 4.010, 23.160



0, 0.000, 0.000



53, 0.007, 296.813



# Same Dimension

The Same Dimension uses a secret algorithm to generate beautiful new colors.



68, 19.340, 24.406



81, 28.955, 24.949



74, 17.225, 75.791



40, 4.201, 23.271



34, 75.004, 40.341



4, 17.488, 21.431





# Inverse Universe

The Inverse Universe completely reimagines the original color for something new.



77, 16.341, 202.023



94, 23.422, 201.870



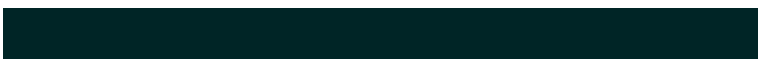
71, 16.338, 262.690



42, 3.956, 202.588



60, 34.392, 202.883

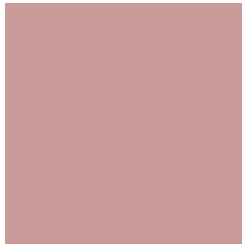


12, 12.938, 201.477



# Previews

## White Background



This preview shows how the CIELCh color 68, 19.342, 24.400 looks on a white background.

## Color Contrast Check

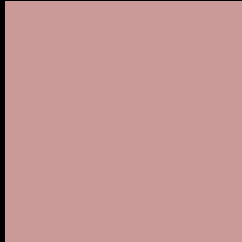
Large Text (above 18pt) WCAG AA × Fail

Any Text WCAG AA × Fail

Large Text (above 18pt) WCAG AAA × Fail

Any Text WCAG AAA × Fail

# Black Background



This preview shows how the CIELCh color 68, 19.342, 24.400 looks on a black background.

## Color Contrast Check

Large Text (above 18pt) WCAG AA ✓ Pass

Any Text WCAG AA ✓ Pass

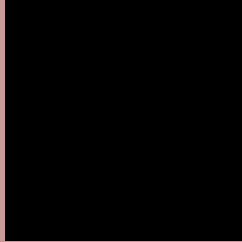
Large Text (above 18pt) WCAG AAA ✓ Pass

Any Text WCAG AAA ✓ Pass

If you want to check with other color combinations, try the [Color Contrast Checker](#).

# CIELCh 68, 19.342, 24.400

## Background



This preview shows how black text looks on a background with the CIELCh color 68, 19.342, 24.400.



This preview shows how white text looks on a background with the CIELCh color 68, 19.342, 24.400.

# Color Blindness Simulation

Color vision deficiency is a very complex topic, and I could not describe the different causes any better than Wikipedia does, so if you want to learn more, you should check out their [article about color blindness](#).

## Dichromacy



### Original Color

68, 19.342, 24.400

### Protanopia

68, 4.473, 78.467

### Deuteranopia

68, 12.266, 43.870



**Tritanopia**  
68, 20.923, 3.274



# Trichromacy



**Original Color**  
68, 19.342, 24.400

**Protanomaly**  
68, 8.707, 38.348

**Deuteranomaly**  
68, 14.592, 35.729

**Tritanomaly**  
68, 20.057, 10.417

# Monochromacy



**Original Color**  
68, 19.342, 24.400

**Achromatopsia**  
69, 0.009, 296.813

**Achromatomaly**  
68, 6.606, 24.664

# CSS Examples

## Text

The CSS property to change the color of the text to CIELCh 68, 19.342, 24.400 is called "color". The color property can be set on classes, ids or directly on the HTML element.

This example shows how text in the color `rgb(202, 154, 152)` looks like.

```
.text, #text, p{  
    color:rgb(202, 154, 152)  
}
```

If you want to add a text shadow in that color use the text-shadow property, you can generate a text shadow directly with our [CSS Text Shadow Generator](#).

Here you see how black text with a 4 pixel rgb(202, 154, 152) colored shadow looks like.

```
.shadow{ text-shadow: 4px 4px 2px rgb(202, 154, 152) }
```

## Border

The CSS property to change the border of an element to CIELCh 68, 19.342, 24.400 is called "border". The border property can be set on classes, ids or directly on the HTML element.

This example shows the color as border, it can be applied via the CSS property "border" or "border-color".

```
.border, #border, table{ border:4px solid rgb(202, 154, 152) }
```

If only the border color should be changed use the property `border-color`.

```
.border{ border-color:rgb(202, 154, 152) }
```

If you want to add a box shadow in that color use:

Here you see how a box with a 4 pixel `rgb(202, 154, 152)` colored shadow looks like.

```
.boxshadow{ -moz-box-shadow:4px 4px 4px  
4px rgb(202, 154, 152); -webkit-box-  
shadow:4px 4px 4px 4px rgb(202, 154, 152);  
box-shadow:4px 4px 4px 4px rgb(202, 154,  
152) }
```

# Background

The CSS property to change the background color of an element to CIELCh 68, 19.342, 24.400 is called "background". The background property can be set on classes, ids or directly on the HTML element.

```
.background, #background, body{  
background: rgb(202, 154, 152) }
```

If only the background color should be changed can be used:

```
.background{ background-color: rgb(202,  
154, 152) }
```

This example shows the color as background, it is applied via the CSS property "background".

To optimize and compress your CSS code, you can use our [online CSS compressor and optimizer](#) based on csstidy. If you want to create a linear or radial gradient as background or border, check our [CSS Gradient Generator](#).

Hey! You found this booklet interesting? Support Converting Colors with the new Membership Option!

The pro membership hides all ads, plus gives you double the colors in the color bucket, and more awesome pro features!

**[Learn more, Memberships starting at \\$2.50/m!](#)**

**Follow me  
on Twitter!**

@ConvertingColor