

Converting Colors

CIELCh(68, 19.617, 56.694)

Have a look what the booklet for
CIELCh(68, 19.617, 56.694) contains.

CIELCh(68, 19.666, 55.972)	3
<i>Conversions</i>	4
<i>Details</i>	6
<i>Harmonies</i>	11
<i>Previews</i>	20
<i>Color Blindness Simulation</i>	23
<i>CSS Examples</i>	26

Color

CIELCh(68, 19.666, 55.972)

Conversions

Conversions Part 1

Format	Color
Hex	C49E89
RGB	196, 158, 137
RGB Percent	77%, 62%, 54%
CMY	0.2316, 0.3806, 0.4629
CMYK	0.00, 0.19, 0.30, 0.23
HSL	21°, 33%, 65%
HSV	21°, 30%, 77%
XYZ	39.4833, 37.9720, 28.8985
YIQ	166.9680, 29.3890, 1.5250

Conversions

Conversions Part 2

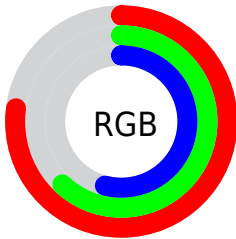
Format	Color
RYB	196, 170, 137
Decimal	12885641
CIELab	68.00, 11.01, 16.30
CIElCh	68, 19.666, 55.972
Yxy	37.9720, 0.3712, 0.3570
Android (android.graphics.Color)	4291075721 (0xFFC49E89)
YUV	166.9680, -14.7742, 25.4611
Hunter-Lab	61.6215, 6.5344, 15.3299

Details

The CIELCh color **68, 19.666, 55.972** is a light color, and the websafe version is hex **CC9999**. A complement of this color would be **69, 16.806, 242.209**, and the grayscale version is **69, 0.008, 296.813**.

A 20% lighter version of the original color is **88, 19.676, 57.382**, and **48, 19.606, 57.002** is the 20% darker color. If you saturate the color by 10%, you get **64, 27.150, 55.256**, and if you desaturate by 10%, it is **72, 12.678, 56.759**.

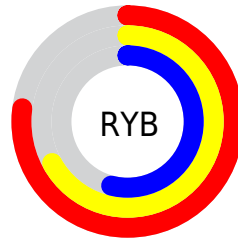
Distribution



Red (77%)

Green (62%)

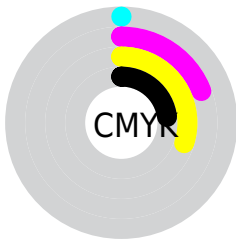
Blue (54%)



Red (77%)

Yellow (67%)

Blue (54%)

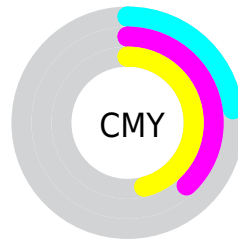


Cyan (0%)

Magenta (19%)

Yellow (30%)

Black (23%)



Cyan (23%)

Magenta (38%)

Yellow (46%)

Brightness & Saturation Gradients

These gradients show how the CIELCh color 68, 19.666, 55.972 changes by changing the brightness by 10 percent. The first figure shows a shift by +10% for each color and the second figure -10%.

Similar to the brightness gradients but the following saturation gradients show a change of the CIELCh color 68, 19.666, 55.972 by changing the saturation by 10% instead.

■ 68, 19.666, 55.972

■ 68, 19.666, 55.972

■ 100, 19.666,
55.972

■ 58, 19.666, 55.972

■ 88, 19.666, 55.972

■ 48, 19.666, 55.972

■ 98, 19.666, 55.972

■ 38, 19.666, 55.972

■ 28, 19.666, 55.972

■ 18, 19.666, 55.972

■ 8, 19.666, 55.972

■ 0, 19.666, 55.972

■ 68, 19.666, 55.972

■ 68, 19.666, 55.972

■ 64, 27.150, 55.256

■ 72, 12.678, 56.759

61, 35.138, 54.603

75, 6.156, 57.558

58, 43.587, 54.017

79, 0.058, 50.500

55, 52.349, 53.461

83, 5.660, 239.467

52, 61.068, 52.812

87, 11.042,
240.314

49, 68.977, 51.779

91, 16.127,
241.181

47, 75.313, 50.250

94, 16.924,
213.894

96, 19.328,
198.230

Harmonies

Complementary

The Complementary color scheme is a pair of colors which are on the opposite of each other on the color wheel.



68, 19.666, 55.972



69, 16.806, 242.209

Rectangle

The Rectangle color scheme consists of four colors that form a rectangle on the color wheel.



68, 19.666, 55.972



68, 19.666, 105.972



68, 19.666, 235.972



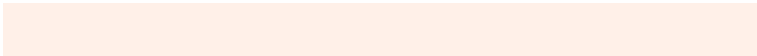
68, 19.666, 285.972

Sweetspot

The Sweet Spot groups the original color and five complimentary colors.



68, 19.666, 55.980



96, 6.766, 57.632



64, 30.564, 338.688



50, 4.726, 57.518



0, 0.000, 0.000



53, 0.007, 296.813

Same Dimension

The Same Dimension uses a secret algorithm to generate beautiful new colors.



68, 19.666, 55.980



84, 29.801, 55.505



76, 26.977, 99.909



39, 3.413, 57.615



39, 64.665, 50.798



5, 11.668, 43.666

Inverse Universe

The Inverse Universe completely reimagines the original color for something new.



69, 16.806, 242.209



86, 24.489, 243.347



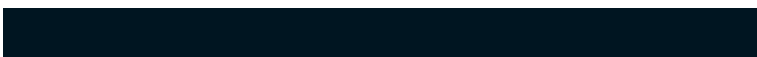
61, 28.263, 287.332



39, 3.270, 239.497



42, 37.980, 265.212



6, 11.037, 253.626

Previews

White Background



This preview shows how the CIELCh color 68, 19.666, 55.972 looks on a white background.

Color Contrast Check

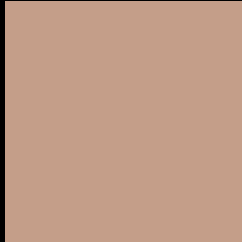
Large Text (above 18pt) WCAG AA × Fail

Any Text WCAG AA × Fail

Large Text (above 18pt) WCAG AAA × Fail

Any Text WCAG AAA × Fail

Black Background



This preview shows how the CIELCh color 68, 19.666, 55.972 looks on a black background.

Color Contrast Check

Large Text (above 18pt) WCAG AA ✓ Pass

Any Text WCAG AA ✓ Pass

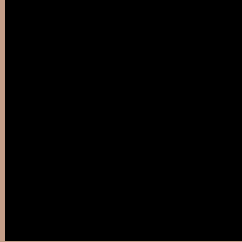
Large Text (above 18pt) WCAG AAA ✓ Pass

Any Text WCAG AAA ✓ Pass

If you want to check with other color combinations, try the [Color Contrast Checker](#).

CIELCh 68, 19.666, 55.972

Background



This preview shows how black text looks on a background with the CIELCh color 68, 19.666, 55.972.



This preview shows how white text looks on a background with the CIELCh color 68, 19.666, 55.972.

Color Blindness Simulation

Color vision deficiency is a very complex topic, and I could not describe the different causes any better than Wikipedia does, so if you want to learn more, you should check out their [article about color blindness](#).

Dichromacy





Tritanopia
68, 18.636, 0.659

Trichromacy



Original Color
68, 19.666, 55.972

Protanomaly
68, 15.059, 76.128

Deuteranomaly
68, 18.667, 60.191

Tritanomaly
68, 17.133, 20.988

Monochromacy



Original Color
68, 19.666, 55.972

Achromatopsia
68, 0.008, 296.813

Achromatomaly
68, 7.018, 58.296

CSS Examples

Text

The CSS property to change the color of the text to CIELCh 68, 19.666, 55.972 is called "color". The color property can be set on classes, ids or directly on the HTML element.

This example shows how text in the color `rgb(196, 158, 137)` looks like.

```
.text, #text, p{  
    color:rgb(196, 158, 137)  
}
```

If you want to add a text shadow in that color use the text-shadow property, you can generate a text shadow directly with our [CSS Text Shadow Generator](#).

Here you see how black text with a 4 pixel rgb(196, 158, 137) colored shadow looks like.

```
.shadow{ text-shadow: 4px 4px 2px rgb(196, 158, 137) }
```

Border

The CSS property to change the border of an element to CIELCh 68, 19.666, 55.972 is called "border". The border property can be set on classes, ids or directly on the HTML element.

This example shows the color as border, it can be applied via the CSS property "border" or "border-color".

```
.border, #border, table{ border:4px solid rgb(196, 158, 137) }
```

If only the border color should be changed use the property `border-color`.

```
.border{ border-color:rgb(196, 158, 137) }
```

If you want to add a box shadow in that color use:

Here you see how a box with a 4 pixel `rgb(196, 158, 137)` colored shadow looks like.

```
.boxshadow{ -moz-box-shadow:4px 4px 4px  
4px rgb(196, 158, 137); -webkit-box-  
shadow:4px 4px 4px 4px rgb(196, 158, 137);  
box-shadow:4px 4px 4px 4px rgb(196, 158,  
137) }
```

Background

The CSS property to change the background color of an element to CIELCh 68, 19.666, 55.972 is called "background". The background property can be set on classes, ids or directly on the HTML element.

```
.background, #background, body{  
background: rgb(196, 158, 137) }
```

If only the background color should be changed can be used:

```
.background{ background-color: rgb(196,  
158, 137) }
```

This example shows the color as background, it is applied via the CSS property "background".

To optimize and compress your CSS code, you can use our [online CSS compressor and optimizer](#) based on csstidy. If you want to create a linear or radial gradient as background or border, check our [CSS Gradient Generator](#).

Hey! You found this booklet interesting? Support Converting Colors with the new Membership Option!

The pro membership hides all ads, plus gives you double the colors in the color bucket, and more awesome pro features!

[Learn more, Memberships starting at \\$2.50/m!](#)

**Follow me
on Twitter!**

@ConvertingColor